



JSC BevelClad
Bevelback Weatherboard Cladding
20mm Cavity on Rigid Underlay

Version 1.2 | 12/02/2024



PREMIUM ARCHITECTURAL
& BUILDING SOLUTIONS

Index

20mm Cavity Setout Guide Fixed Vertically

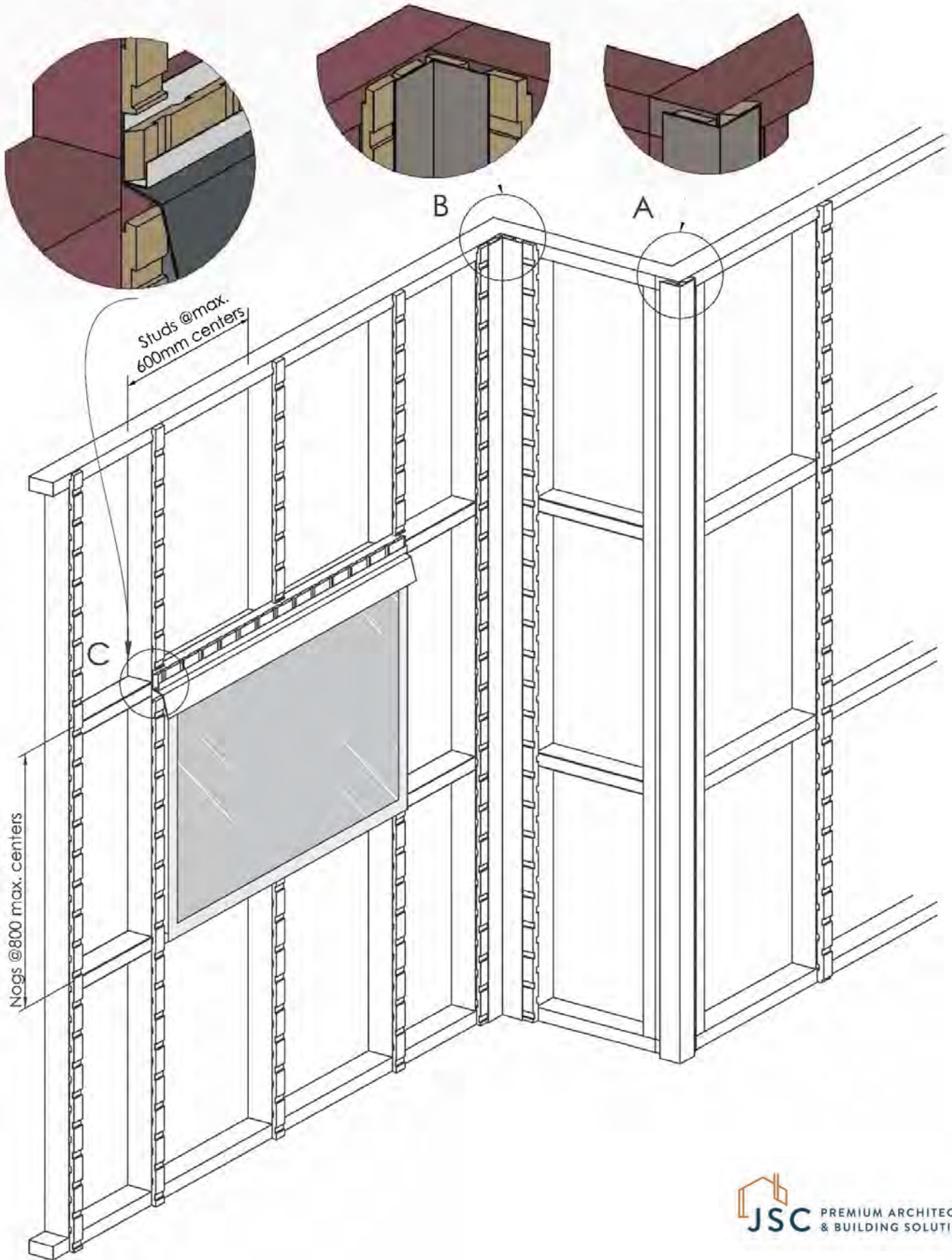
JB-R20-SEC01	Sectional Detail – Plan View
JB-R20-SEC02	Sectional Detail – Cross Section View
JB-R20-01	Bottom Plate Detail
JB-R20-01A	Bottom Plate on Timber Detail
JB-R20-02	Top Plate Soffit Detail
JB-R20-03	Raking Soffit Detail
JB-R20-04	Bottom Plate Soffit Detail
JB-R20-05	Inter Storey Junction Detail
JB-R20-06	Parapet Detail
JB-R20-10	Internal Corner Detail
JB-R20-11	Internal Corner Detail – J110
JB-R20-12	External Corner Box Detail
JB-R20-15	External Corner Soaker Detail
JB-R20-20	Scarf Detail
JB-R20-21	Pipe Penetration Detail
JB-R20-25	Meterbox Head Detail
JB-R20-26	Meterbox Jamb Detail
JB-R20-27	Meterbox Sill Detail
JB-R20-30	Window Head Detail
JB-R20-31	Window Jamb Detail
JB-R20-33	Window Sill Detail

20mm Cavity Batten Setout Fixed Vertically

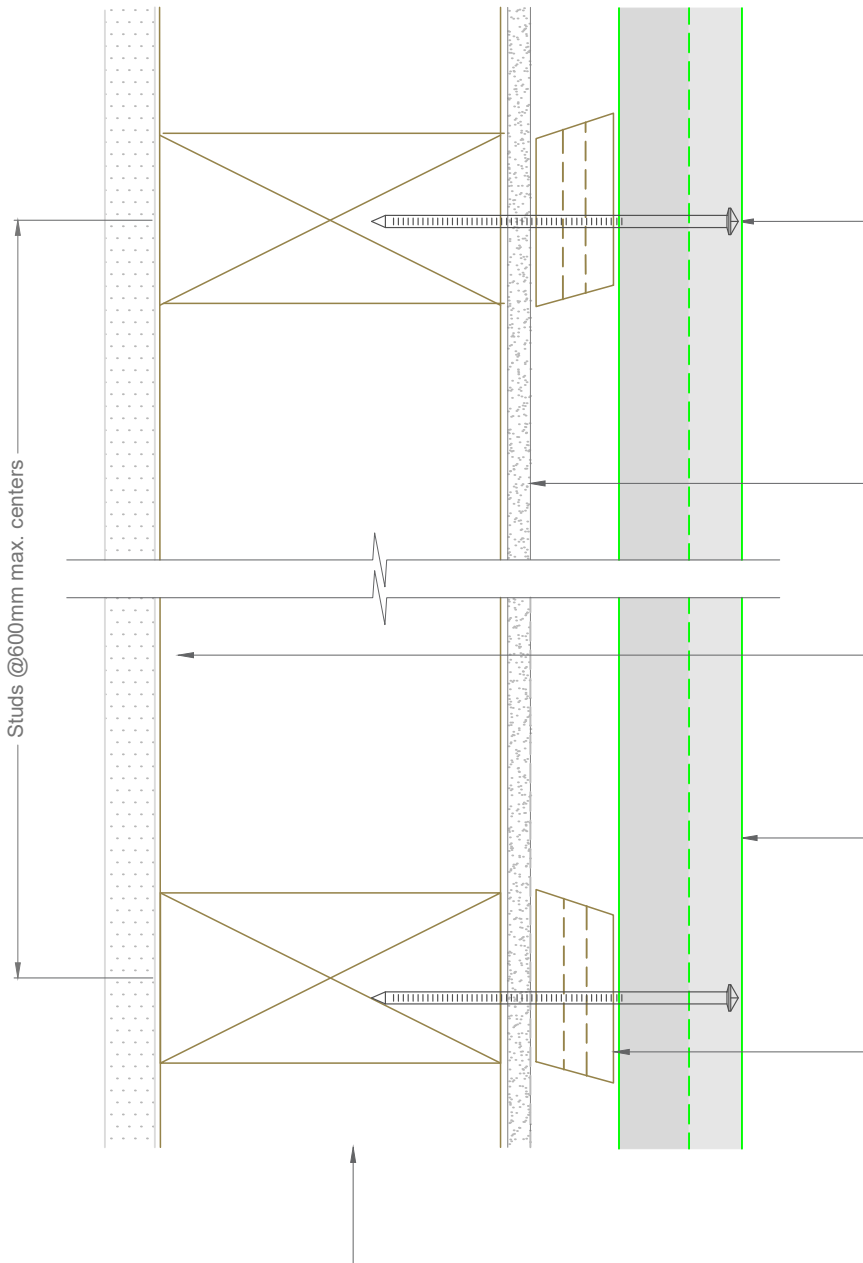
Window Details
JB-30,31,32,33

Internal Corner Details
JB-10,11

External Corner Details
JB-12,13



Plan View



Single fix at each stud with annular grooved stainless steel or silicon bronze nails as per NZBC/E2 Table 24

- Pre-drilled 1mm diameter smaller than nail gauge
- Nailed with a 2° upward slope
- 30mm min penetration into framing
- Nailed 10mm above lap
- Minimum 50mm from ends of boards

Rigid wall underlay to comply with NZBC/E2 Table 23 and Section 9.1.7.2 installed to manufacturers specifications

Interior lining or use rigid air barrier for unlined walls such as gable ends. See NZBC/E2 Paragraph 9.1.4

Selected Bevel Back Weatherboard coated with approved coating to all 4 sides and all ends

JSC-U H3.2 45x20mm treated timber castellated cavity batten

- Tacked on with SS Clout or similar
- Keep 10mm gap to the cavity battens except at bottom plate
- Cut ends to slope away from wall (10-15°)

Framing to NZS 3604 or "fit for purpose"

Note: To be read in conjunction with complete JSC installation instructions • Details may be subject to change without notification

Sectional Detail - Rigid Underlay

JB-R20-SEC01

Scale: 1:2

Date: 12/02/2024

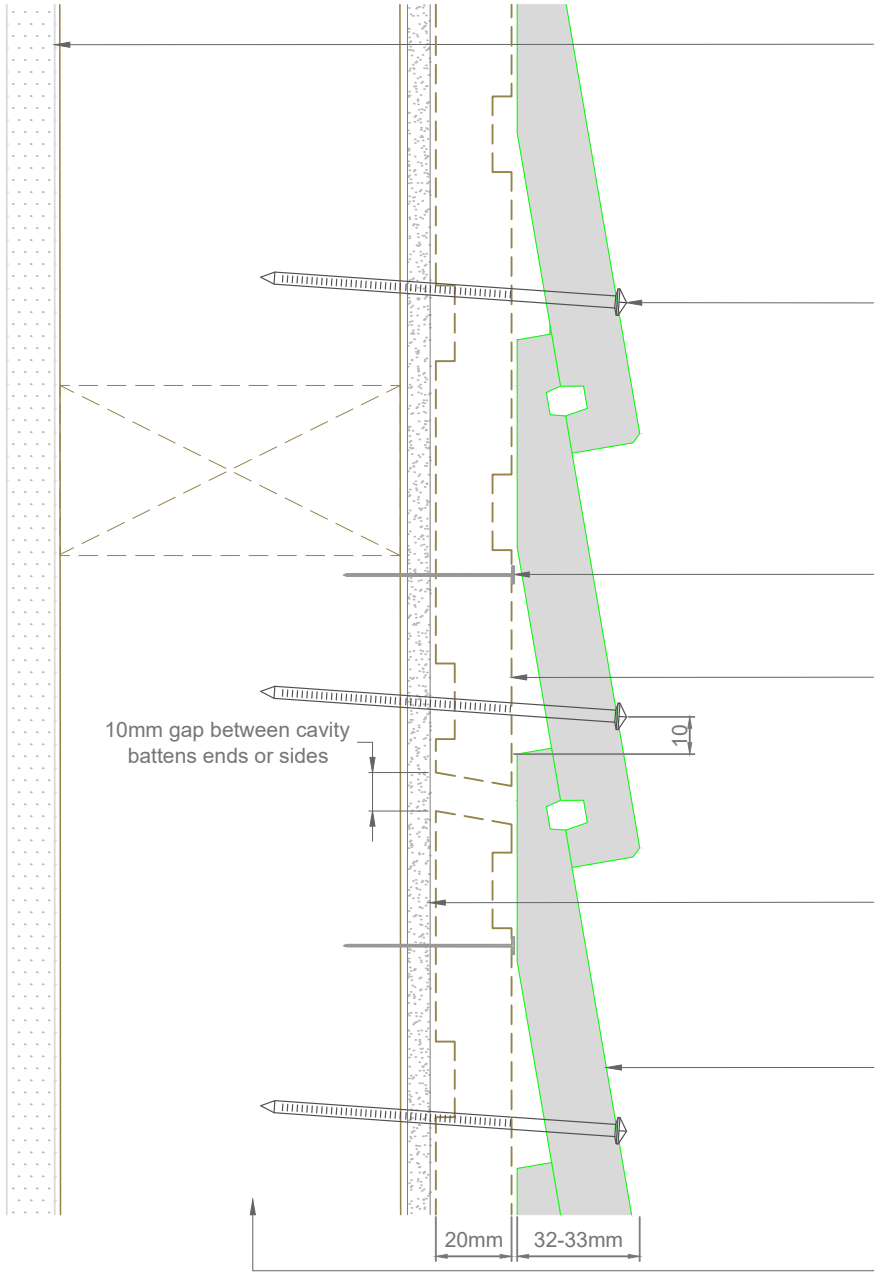
Email: TechHelp@jstimber.co.nz

Auckland
20 Sawmill Road
Riverhead
☎ 09 412 2800

Christchurch
72 Hammersmith Drive
Wigram
☎ 03 348 9726

Web: www.jstimber.co.nz

Cross Section View



Interior lining or use rigid air barrier for unlined walls such as gable ends. See NZBC/E2 paragraph 9.1.4

Single fix at each stud with annular grooved stainless steel or silicon bronze nails as per NZBC/E2 Table 24

- Pre-drilled 1mm diameter smaller than nail gauge
- Nailed with a 2° upward slope
- 30mm min penetration into framing
- Nailed 10mm above lap
- Minimum 50mm from ends of boards

40-50mm Stainless Steel Clout

JSC-U H3.2 45x20mm treated timber castellated cavity batten

- Tacked on with SS Clout or similar
- Cut ends to slope away from wall (10-15°)

Wall underlay to comply with NZBC/E2 Table 23 installed to manufacturer specification

JSC Bevel Back Weatherboard coated with approved coating to all 4 sides and ends

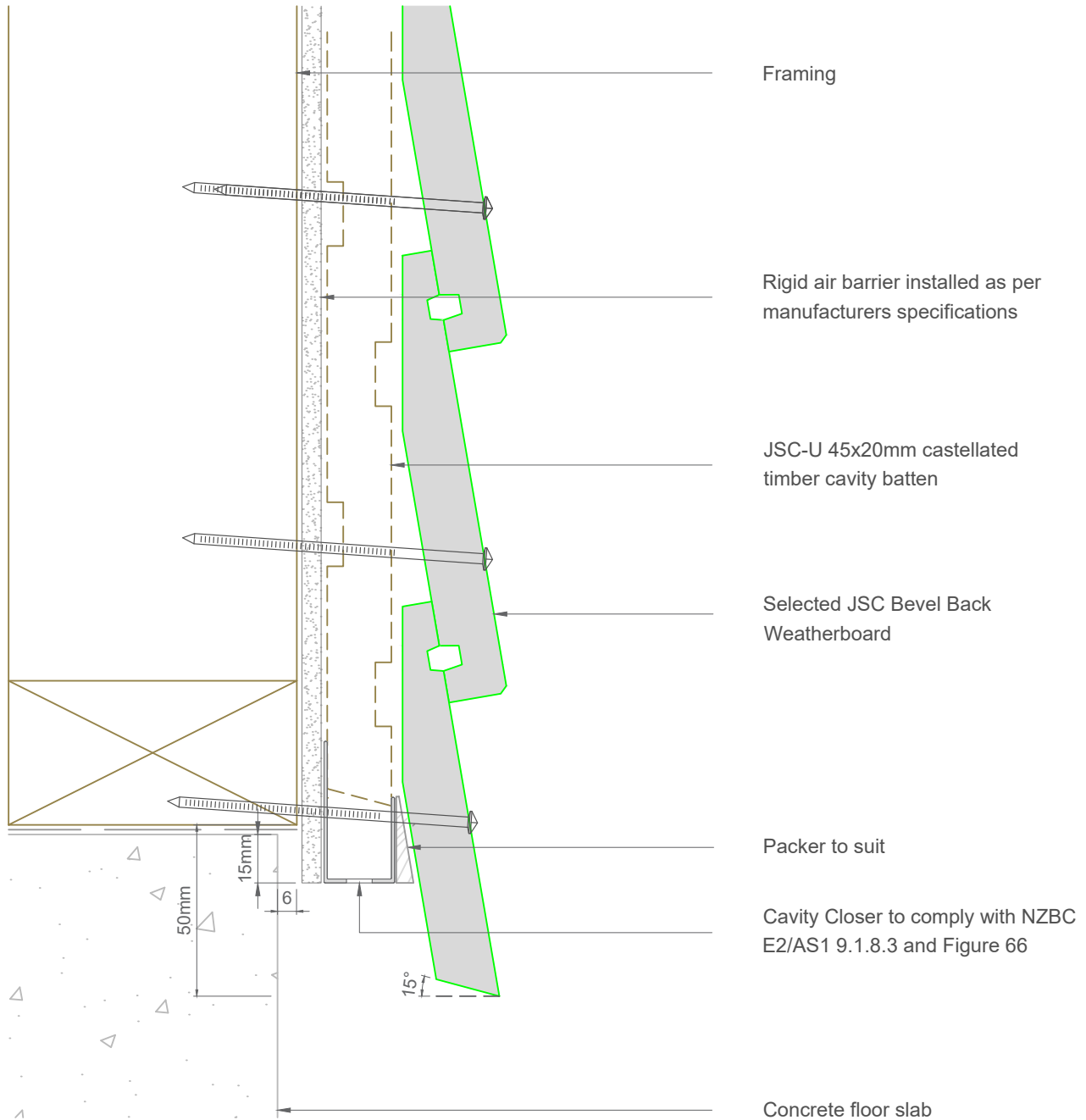
Framing to NZS 3604 or "fit for purpose"

Note: To be read in conjunction with complete JSC installation instructions • Details may be subject to change without notification

Sectional Detail - Rigid Underlay	JB-R20-SEC02	Scale: 1:2 Date: 12/02/2024
--	---------------------	--

Email: TechHelp@jstimber.co.nz Web: www.jstimber.co.nz	Auckland 20 Sawmill Road Riverhead ☎ 09 412 2800	Christchurch 72 Hammersmith Drive Wigram ☎ 03 348 9726
---	--	--





Note:- Maintain ground clearance as per NZBC/E2 paragraph 9.1.3.3 and Table 18

Note: To be read in conjunction with complete JSC installation instructions • Details may be subject to change without notification

Bottom Plate Detail - Rigid Underlay

JB-R20-01

Scale: 1:2

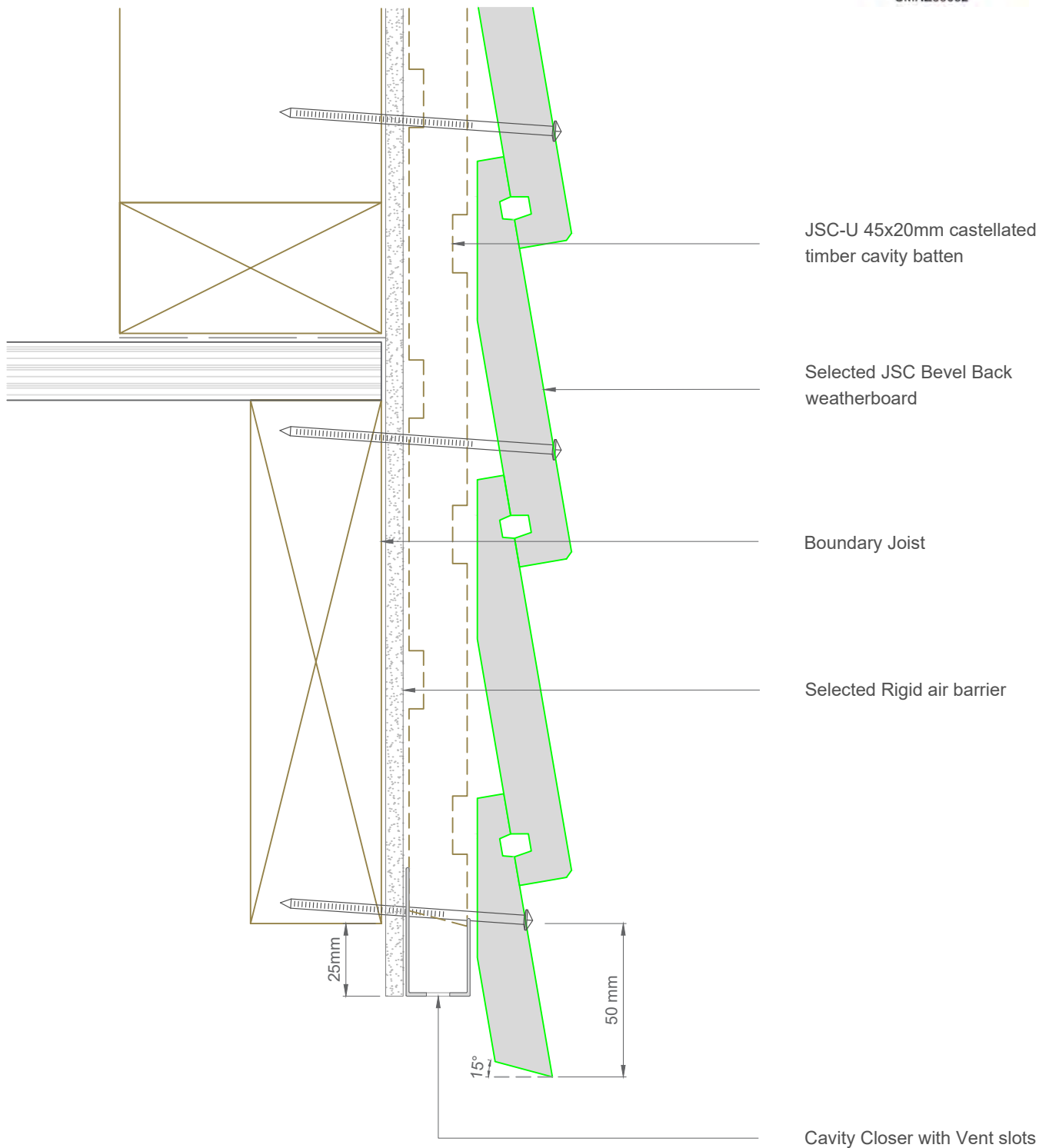
Date: 12/02/2024

Email: TechHelp@jsttimber.co.nz

Auckland
20 Sawmill Road
Riverhead
☎ 09 412 2800

Christchurch
72 Hammersmith Drive
Wigram
☎ 03 348 9726

Web: www.jsttimber.co.nz



Note:- Maintain ground clearance as per NZBC/E2 paragraph 9.1.3.3 and Table 18

Note: To be read in conjunction with complete JSC installation instructions • Details may be subject to change without notification

Bottom Plate on Timber Floor Detail - Rigid Underlay

JB-R20-01A

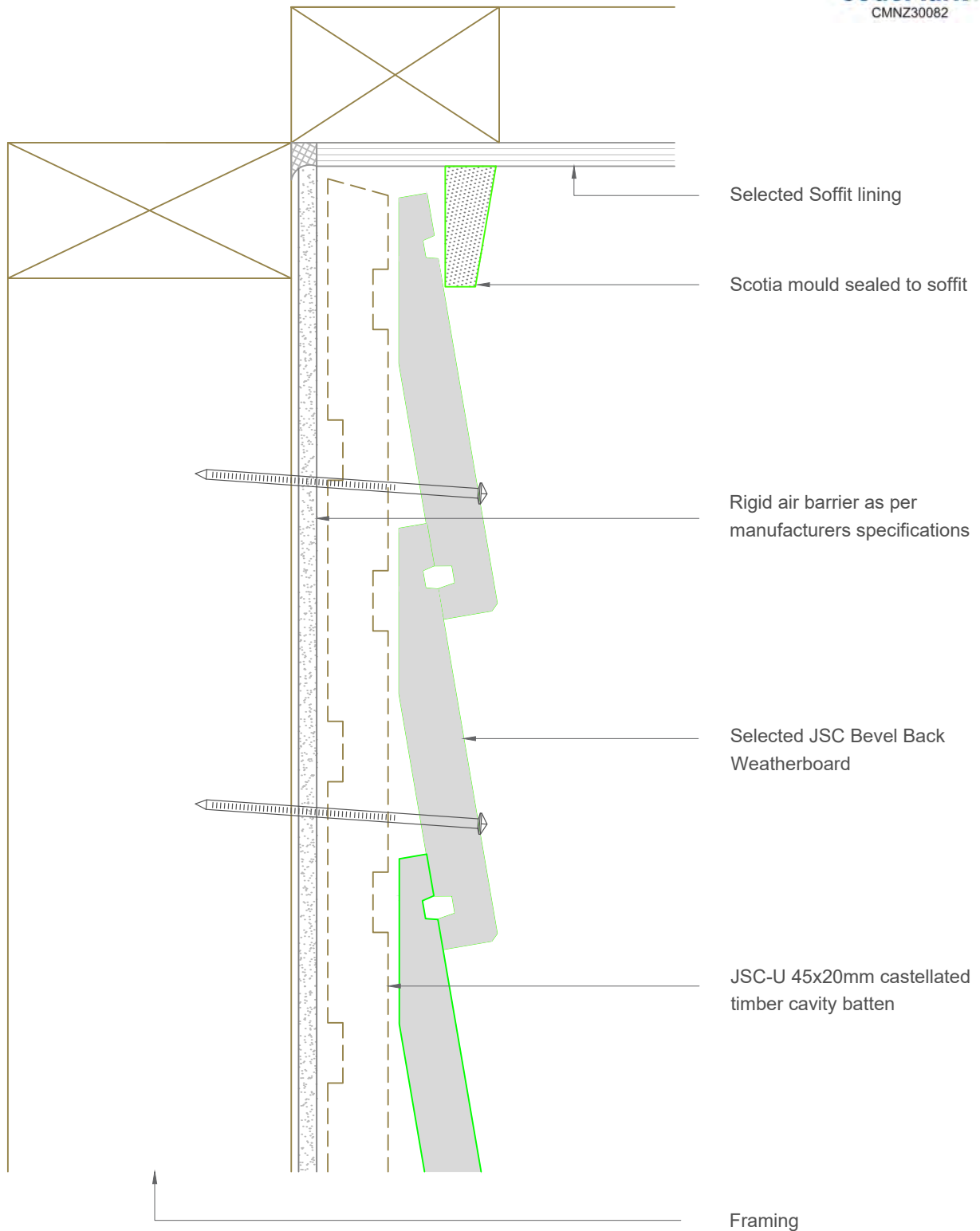
Scale: 1:2
Date: 12/02/2024

Email: TechHelp@jsttimber.co.nz

Auckland
20 Sawmill Road
Riverhead
☎ 09 412 2800

Christchurch
72 Hammersmith Drive
Wigram
☎ 03 348 9726

Web: www.jsttimber.co.nz



Note: To be read in conjunction with complete JSC installation instructions • Details may be subject to change without notification

Top Plate Soffit Detail - Rigid Underlay

JB-R20-02

Scale: 1:2

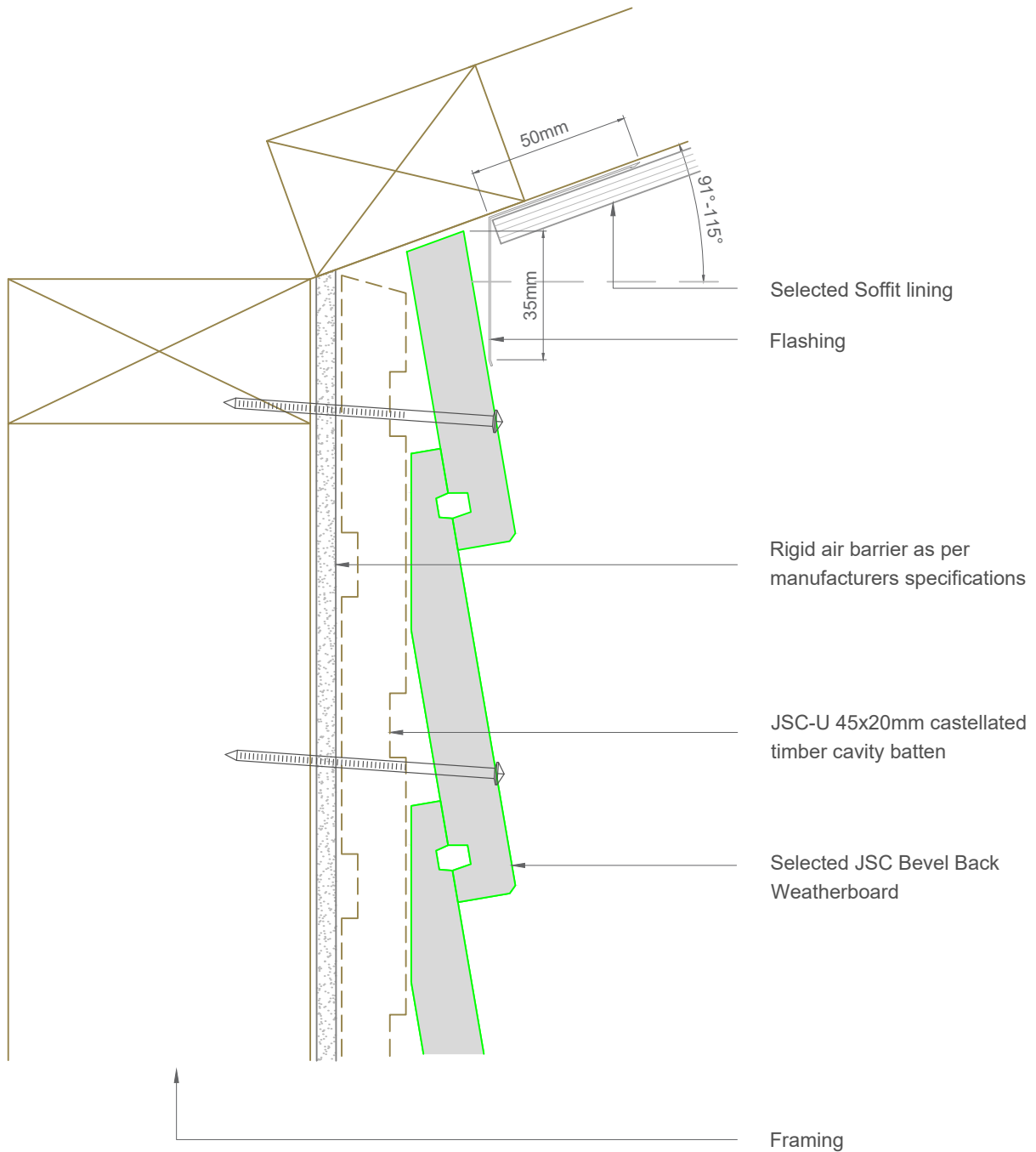
Date: 12/02/2024

Email: TechHelp@jstimber.co.nz

Auckland
20 Sawmill Road
Riverhead
☎ 09 412 2800

Christchurch
72 Hammersmith Drive
Wigram
☎ 03 348 9726

Web: www.jstimber.co.nz



Note: To be read in conjunction with complete JSC installation instructions • Details may be subject to change without notification

Raking Soffit Detail - Rigid Underlay

JB-R20-03

Scale: 1:2

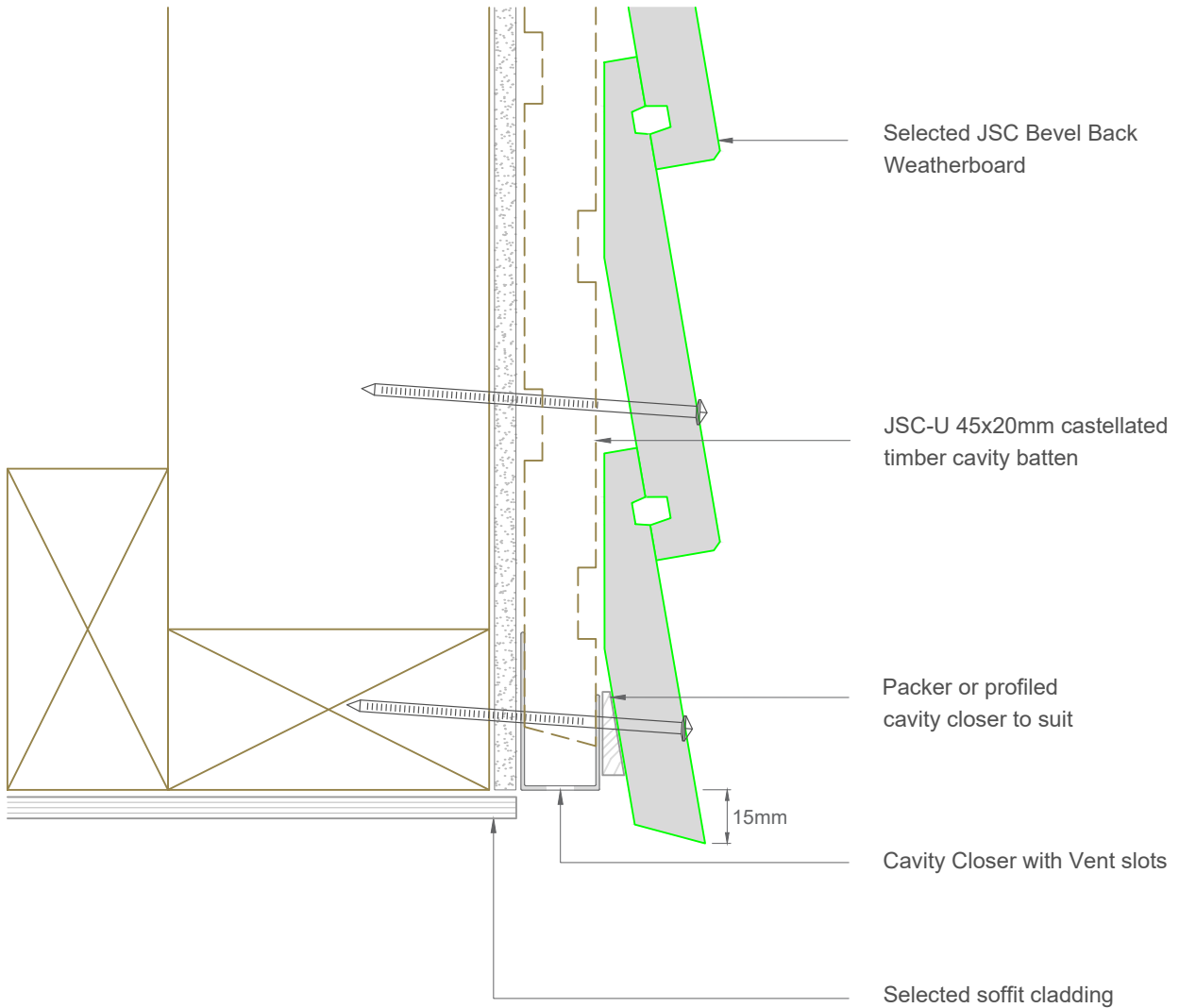
Date: 12/02/2024

Email: TechHelp@jsctimber.co.nz

Auckland
20 Sawmill Road
Riverhead
☎ 09 412 2800

Christchurch
72 Hammersmith Drive
Wigram
☎ 03 348 9726

Web: www.jsctimber.co.nz



Note: To be read in conjunction with complete JSC installation instructions • Details may be subject to change without notification

Bottom Plate Soffit Detail - Rigid Underlay

JB-R20-04

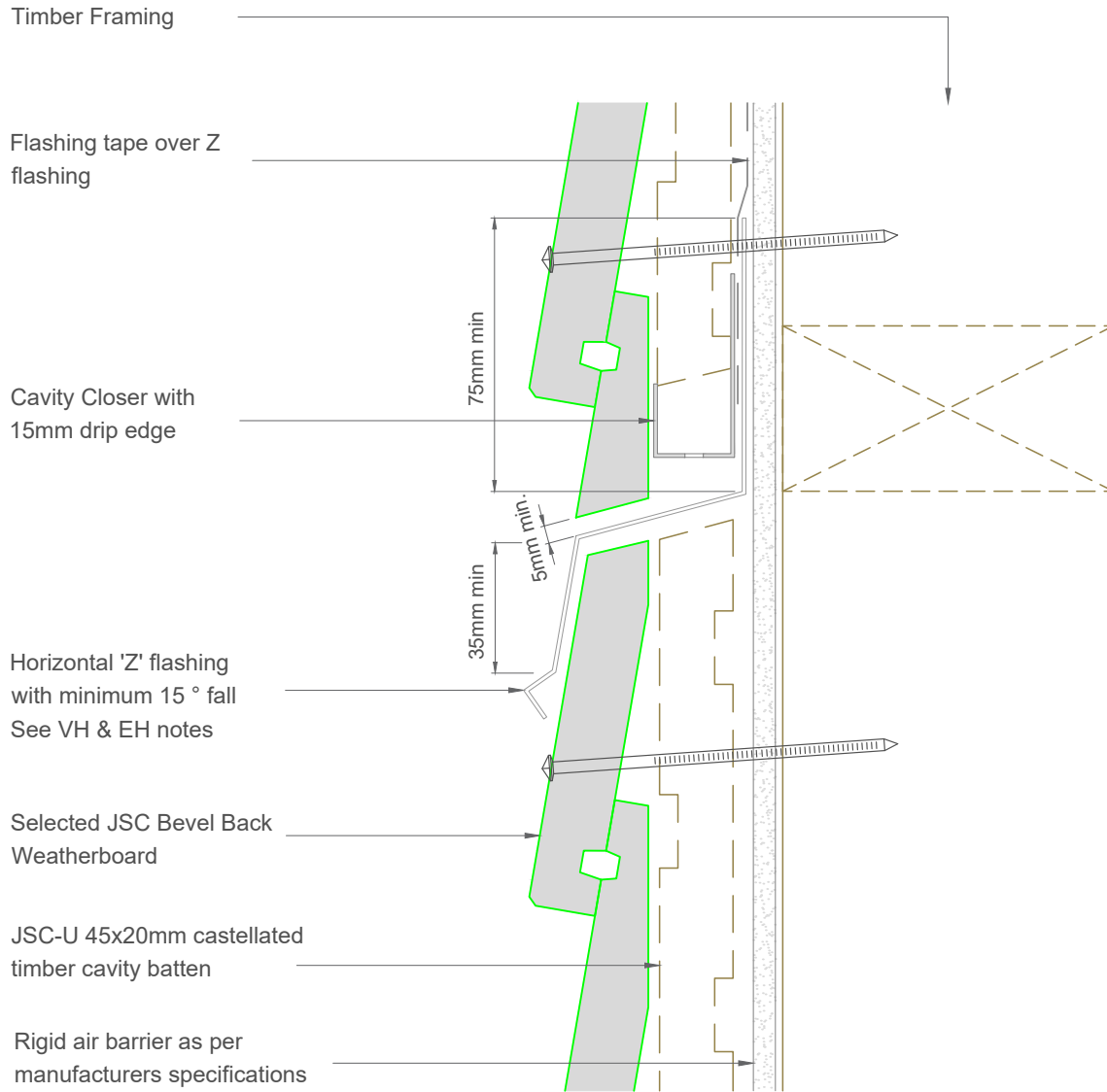
Scale: 1:2
Date: 12/02/2024

Email: TechHelp@jstimber.co.nz

Auckland
20 Sawmill Road
Riverhead
☎ 09 412 2800

Christchurch
72 Hammersmith Drive
Wigram
☎ 03 348 9726

Web: www.jstimber.co.nz



Note: To be read in conjunction with complete JSC installation instructions • Details may be subject to change without notification

Inter Storey Junction Detail - Rigid Underlay

JB-R20-05

Scale: 1:2

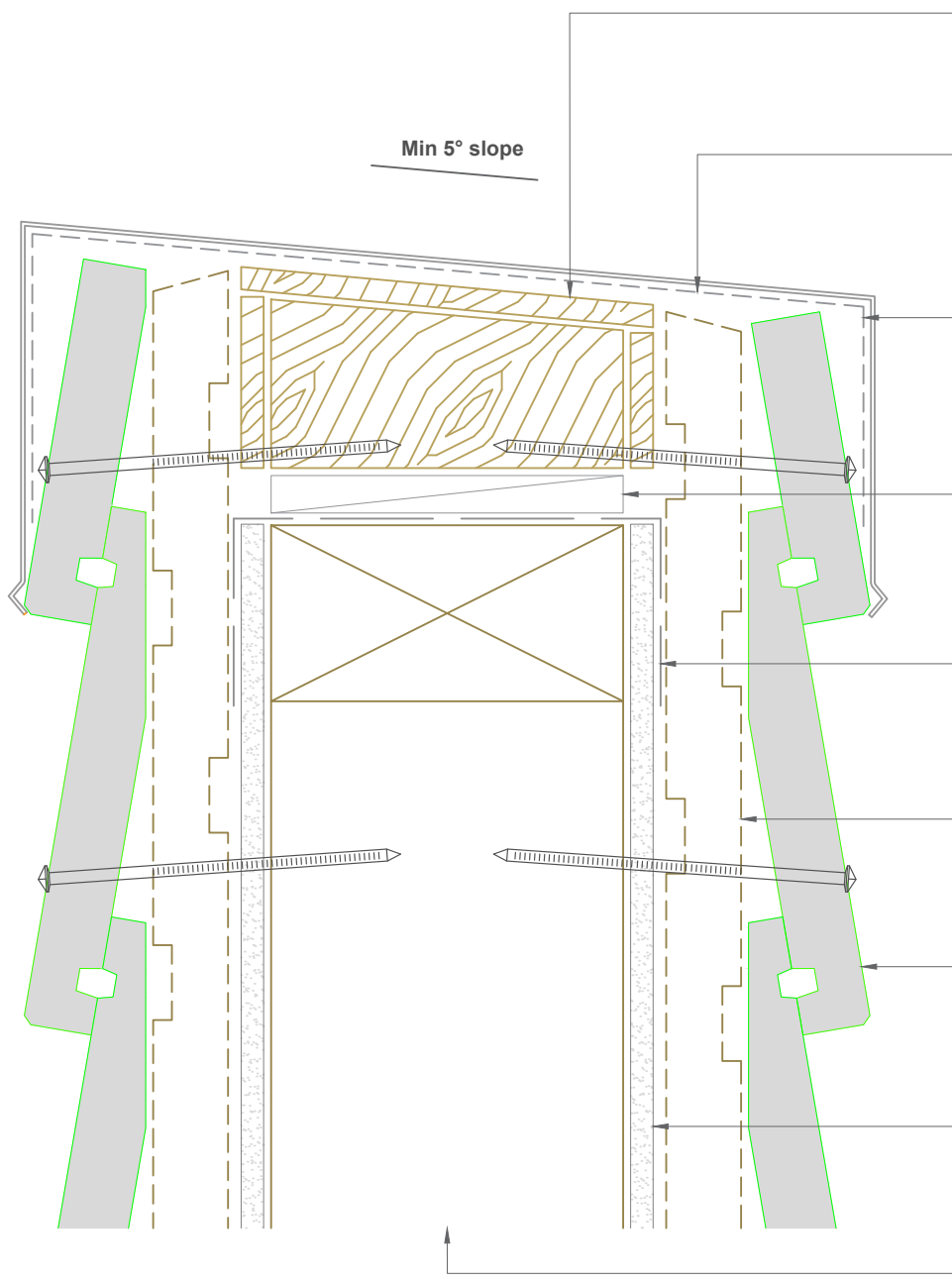
Date: 12/02/2024

Email: TechHelp@jsttimber.co.nz

Auckland
20 Sawmill Road
Riverhead
☎ 09 412 2800

Christchurch
72 Hammersmith Drive
Wigram
☎ 03 348 9726

Web: www.jsttimber.co.nz



H3.2 Treated packer to form slope

Underlay to provide separation of metal capping and timber

Metal capping per NZBC/E2 Figure 10

Provide packer to ventilate between cavities

Flexible adhesive tape over air barrier as per the underlay manufacturer's specification

JSC-U 45x20mm castellated timber cavity batten

Selected JSC Bevel Back Weatherboard

Selected Rigid Wall Underlay

Framing

Note:- Parapet Design & installation should comply to NZBC/E2 Section 6

Note: To be read in conjunction with complete JSC installation instructions • Details may be subject to change without notification

Parapet Detail - Rigid Underlay

JB-R20-06

Scale: 1:2

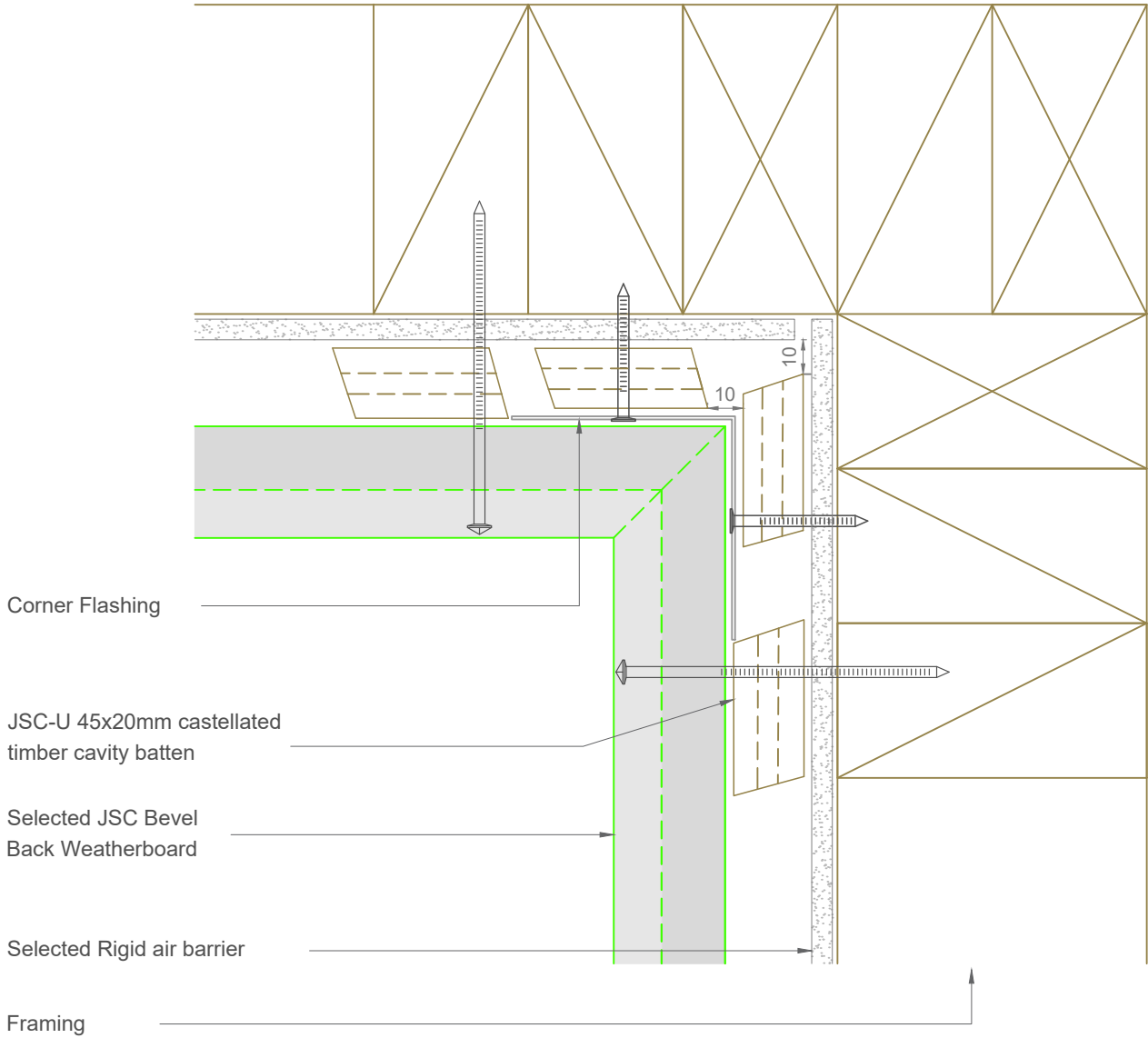
Date: 12/02/2024

Email: TechHelp@jstimber.co.nz

Auckland
20 Sawmill Road
Riverhead
☎ 09 412 2800

Christchurch
72 Hammersmith Drive
Wigram
☎ 03 348 9726

Web: www.jstimber.co.nz



Note: To be read in conjunction with complete JSC installation instructions • Details may be subject to change without notification

Internal Corner Detail - Rigid Underlay

JB-R20-10

Scale: 1:2

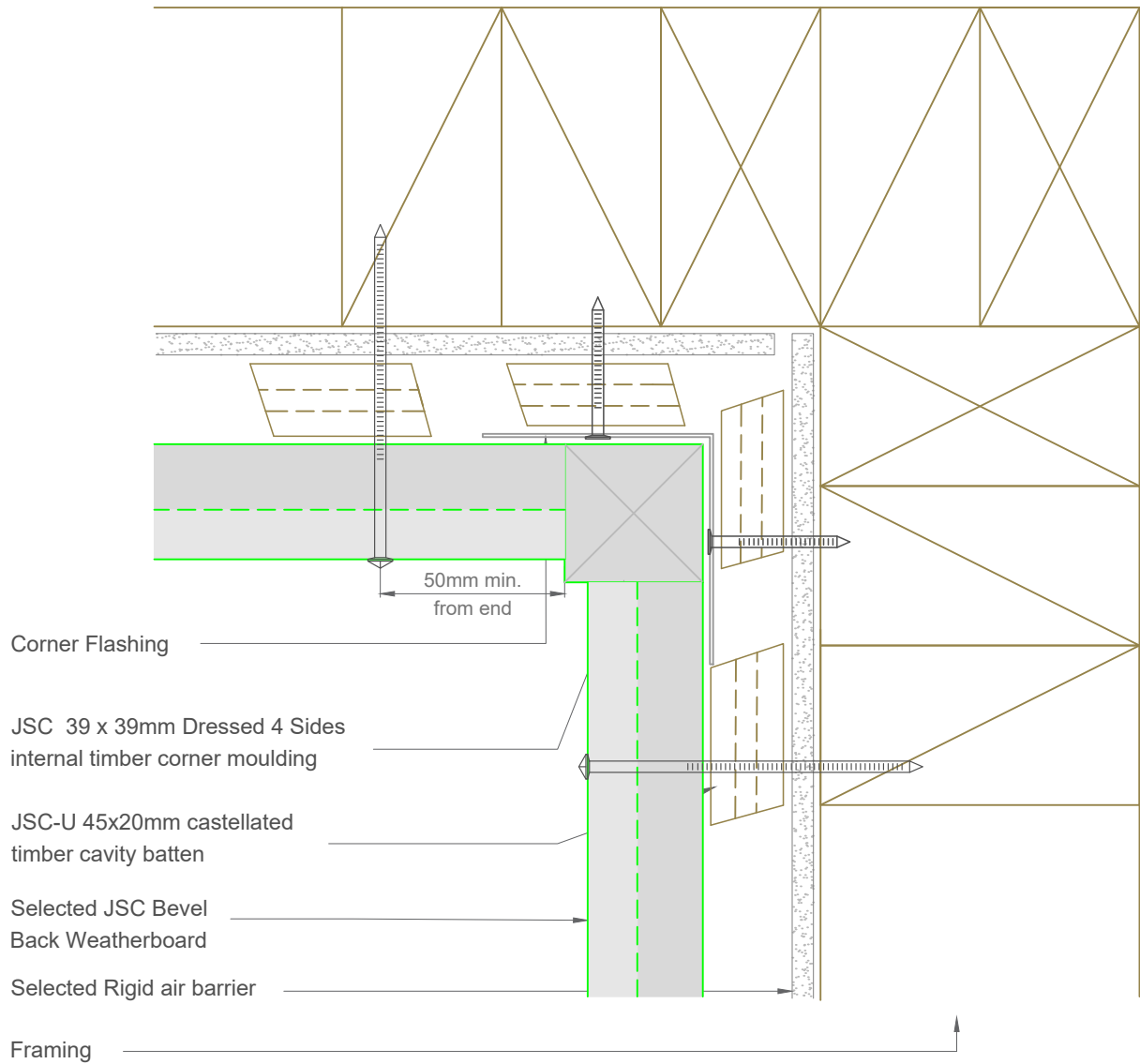
Date: 12/02/2024

Email: TechHelp@jsttimber.co.nz

Auckland
20 Sawmill Road
Riverhead
☎ 09 412 2800

Christchurch
72 Hammersmith Drive
Wigram
☎ 03 348 9726

Web: www.jsttimber.co.nz



Note: To be read in conjunction with complete JSC installation instructions • Details may be subject to change without notification

Internal Corner Detail - Rigid Underlay

JB-R20-11

Scale: 1:2

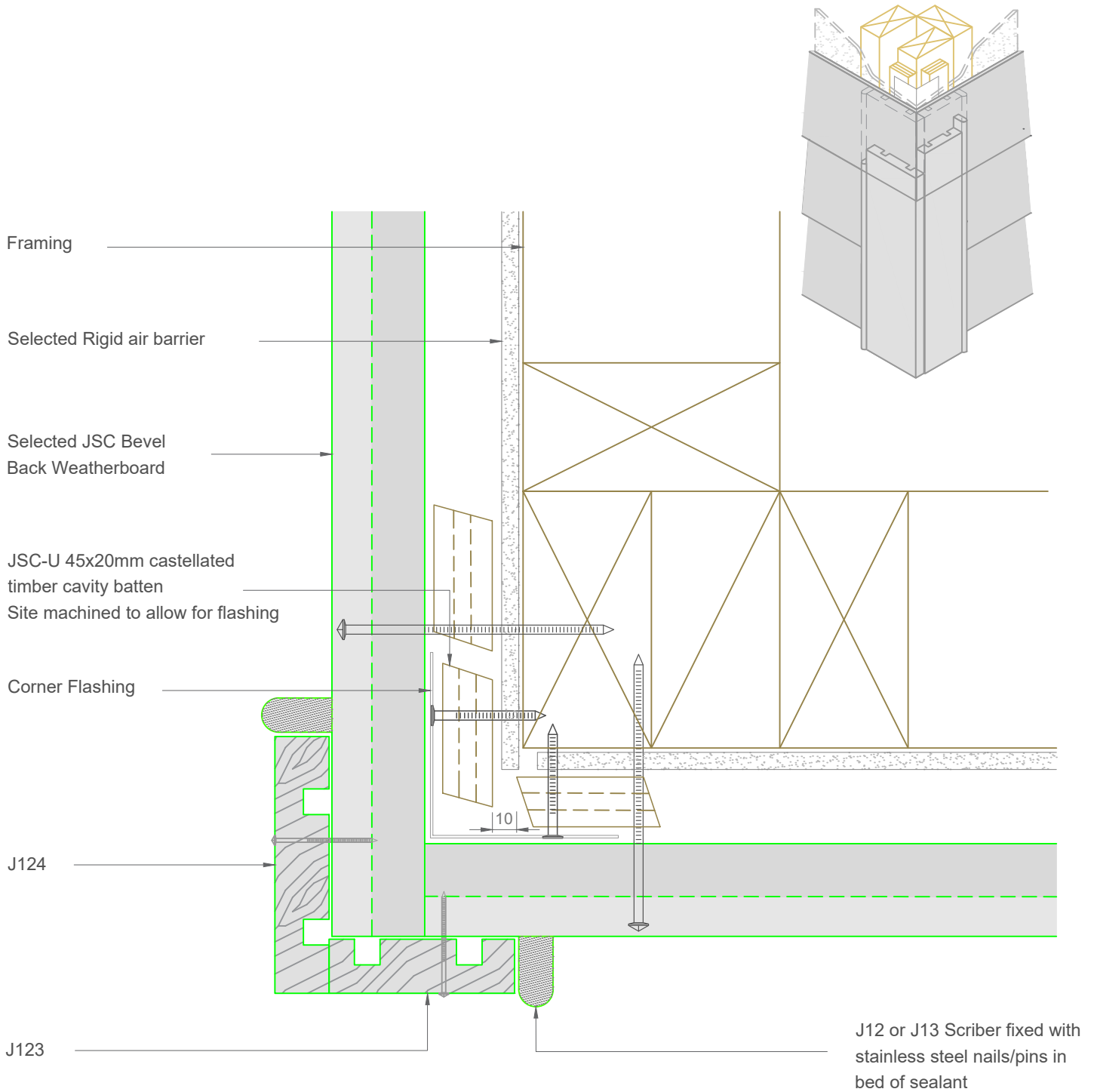
Date: 12/02/2024

Email: TechHelp@jsctimber.co.nz

Auckland
20 Sawmill Road
Riverhead
☎ 09 412 2800

Christchurch
72 Hammersmith Drive
Wigram
☎ 03 348 9726

Web: www.jsctimber.co.nz



Note: To be read in conjunction with complete JSC installation instructions • Details may be subject to change without notification

External Corner Detail - Rigid Underlay

JB-R20-12

Scale: 1:2

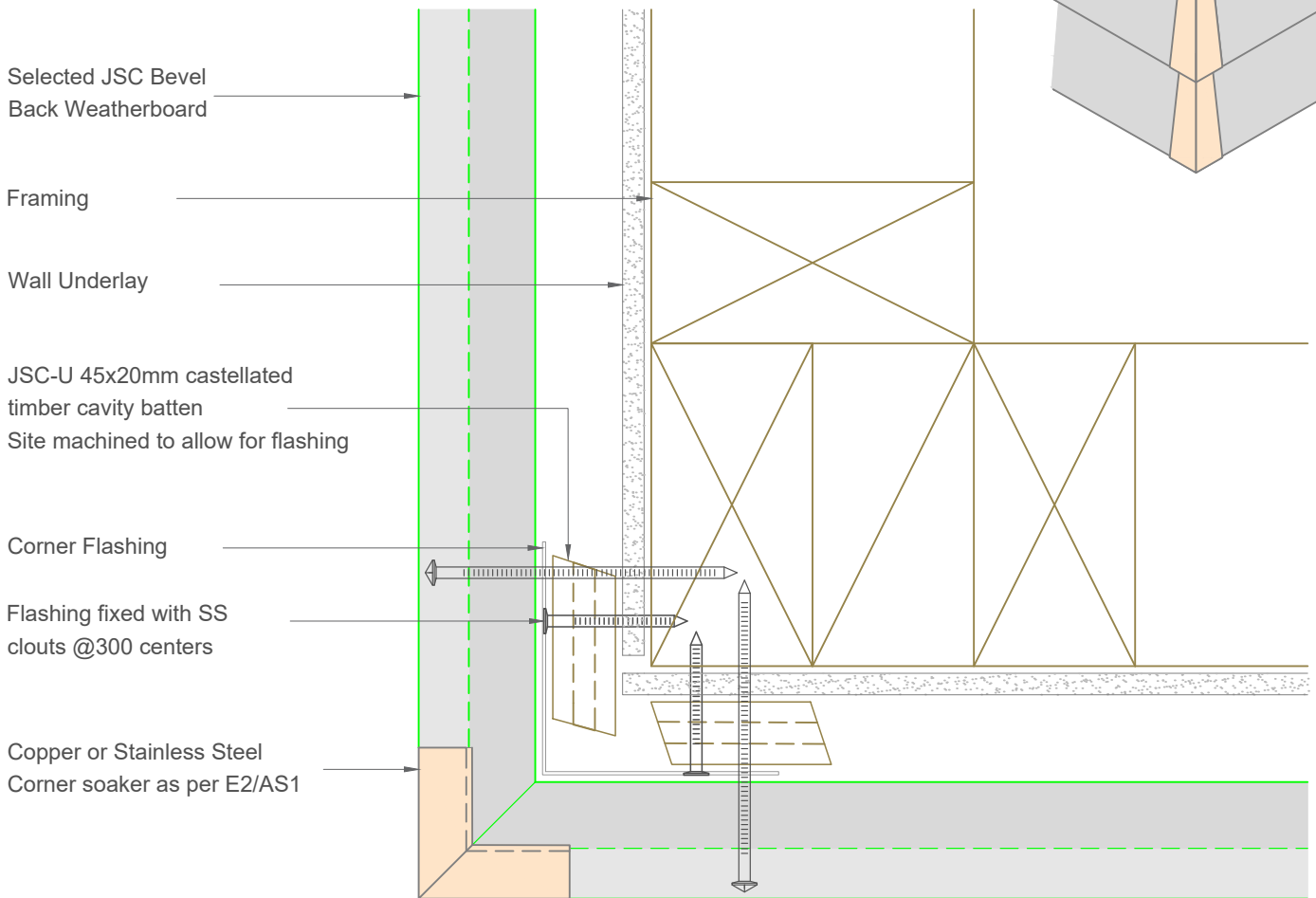
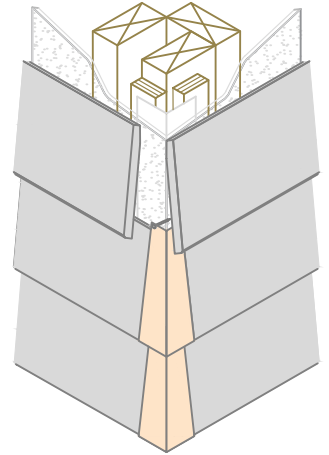
Date: 12/02/2024

Email: TechHelp@jsttimber.co.nz

Auckland
20 Sawmill Road
Riverhead
☎ 09 412 2800

Christchurch
72 Hammersmith Drive
Wigram
☎ 03 348 9726

Web: www.jsttimber.co.nz



Note: To be read in conjunction with complete JSC installation instructions • Details may be subject to change without notification

External Corner Soaker Detail - Rigid Underlay

JB-R20-15

Scale: 1:2

Date: 12/02/2024

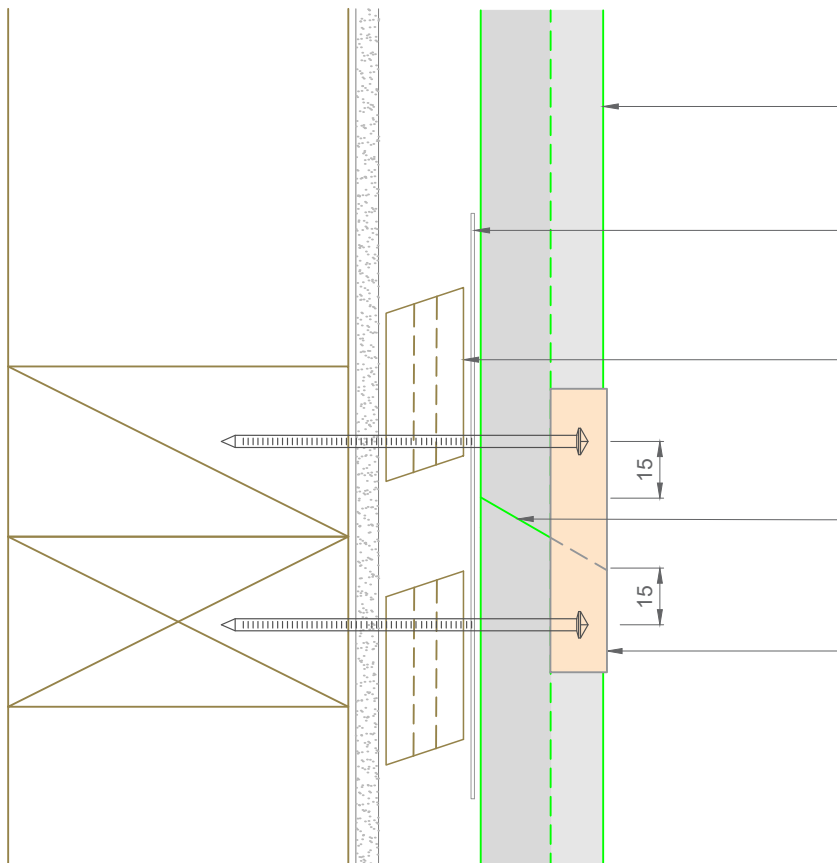
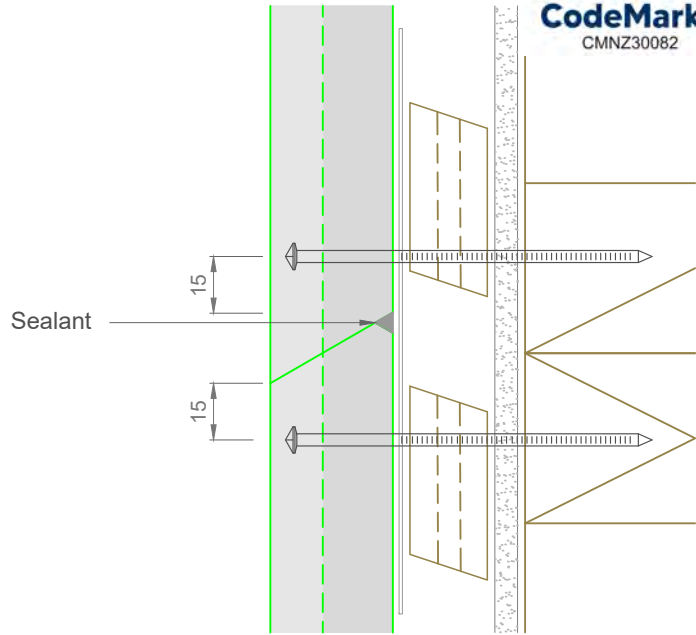
Email: TechHelp@jsttimber.co.nz

Auckland
20 Sawmill Road
Riverhead
☎ 09 412 2800

Christchurch
72 Hammersmith Drive
Wigram
☎ 03 348 9726

Web: www.jsttimber.co.nz

Alternative option for occasional
joints in particular areas
*Not suitable for painted boards



Selected JSC Bevel Back
Weatherboard

Back Flashing min 100 mm
& 50 mm longer than join

JSC 45 x 20mm castellated
treated cavity batten

Protective bedded sealant joint
to be placed between joint in
weatherboards

Copper or Stainless Steel Flat
soaker as per E2/AS1

Note: To be read in conjunction with complete JSC installation instructions • Details may be subject to change without notification

Scarf Joint Detail - Rigid Underlay

JB-R20-20

Scale: 1:2

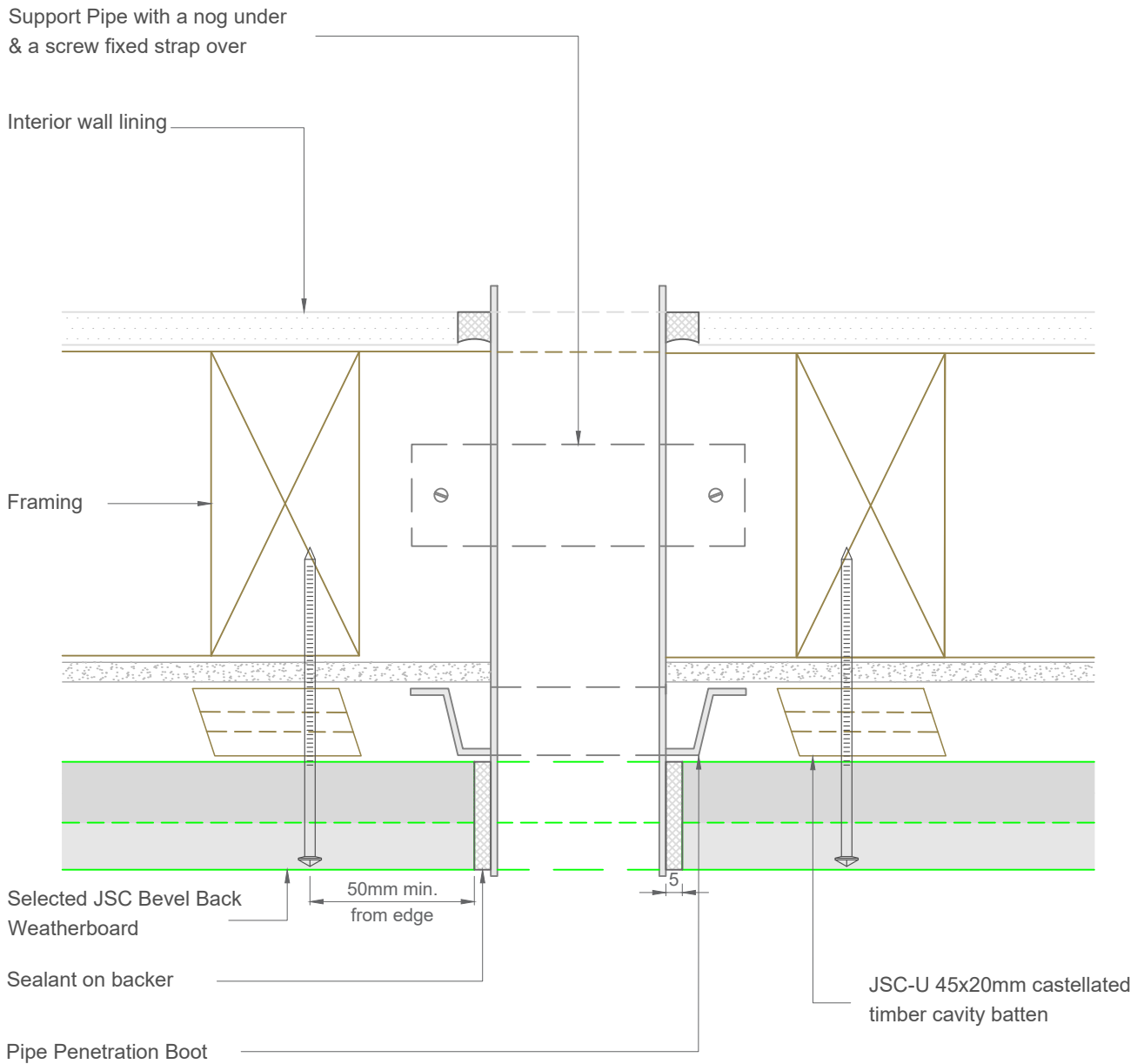
Date: 12/02/2024

Email: TechHelp@jstimber.co.nz

Auckland
20 Sawmill Road
Riverhead
☎ 09 412 2800

Christchurch
72 Hammersmith Drive
Wigram
☎ 03 348 9726

Web: www.jstimber.co.nz



Note: To be read in conjunction with complete JSC installation instructions • Details may be subject to change without notification

Pipe Penetration Detail - Rigid Underlay

JB-R20-21

Scale: 1:2

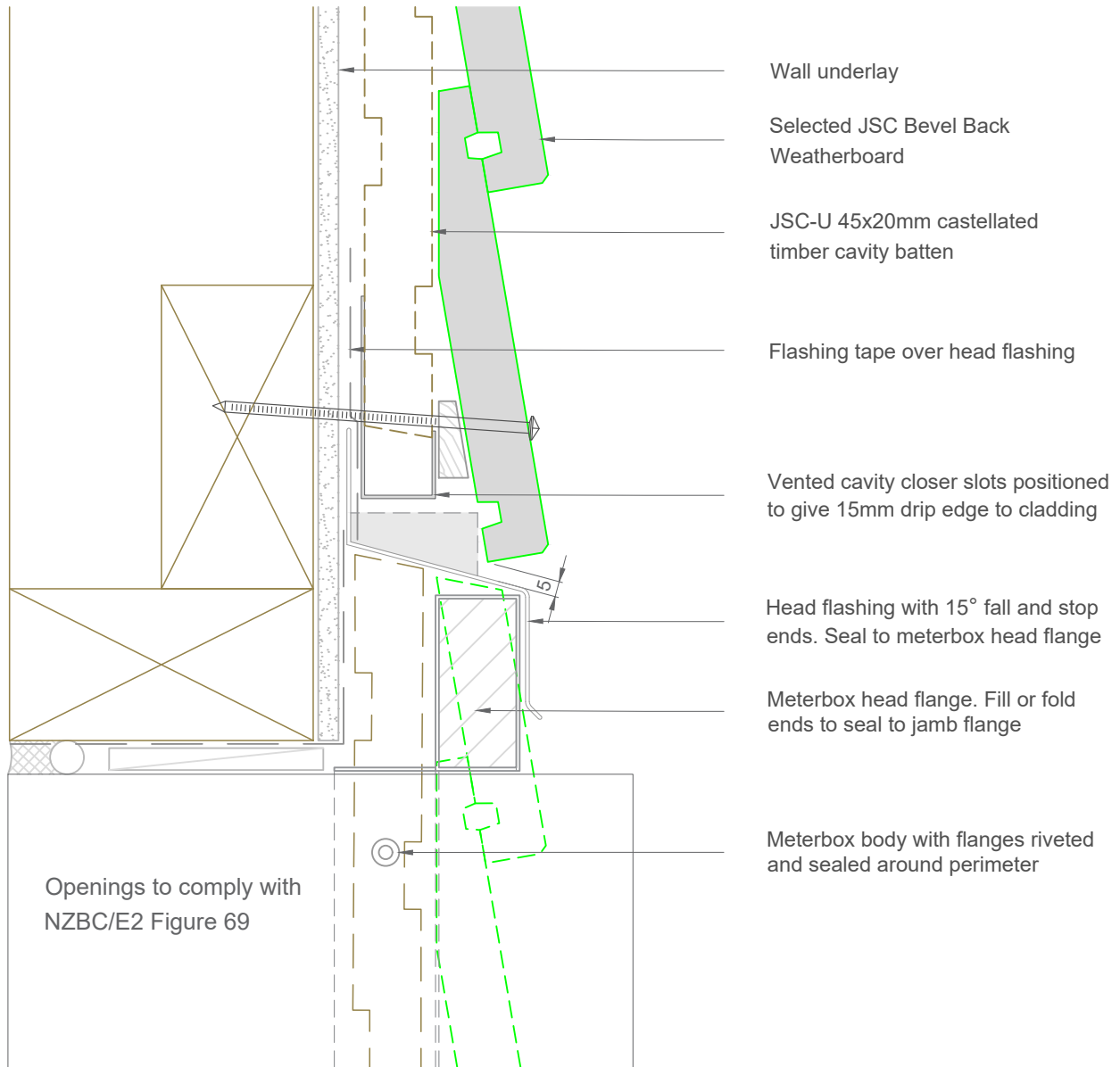
Date: 12/02/2024

Email: TechHelp@jstimber.co.nz

Auckland
20 Sawmill Road
Riverhead
☎ 09 412 2800

Christchurch
72 Hammersmith Drive
Wigram
☎ 03 348 9726

Web: www.jstimber.co.nz



Note: To be read in conjunction with complete JSC installation instructions • Details may be subject to change without notification

Meterbox Head Detail - Rigid Underlay

JB-R20-25

Scale: 1:2

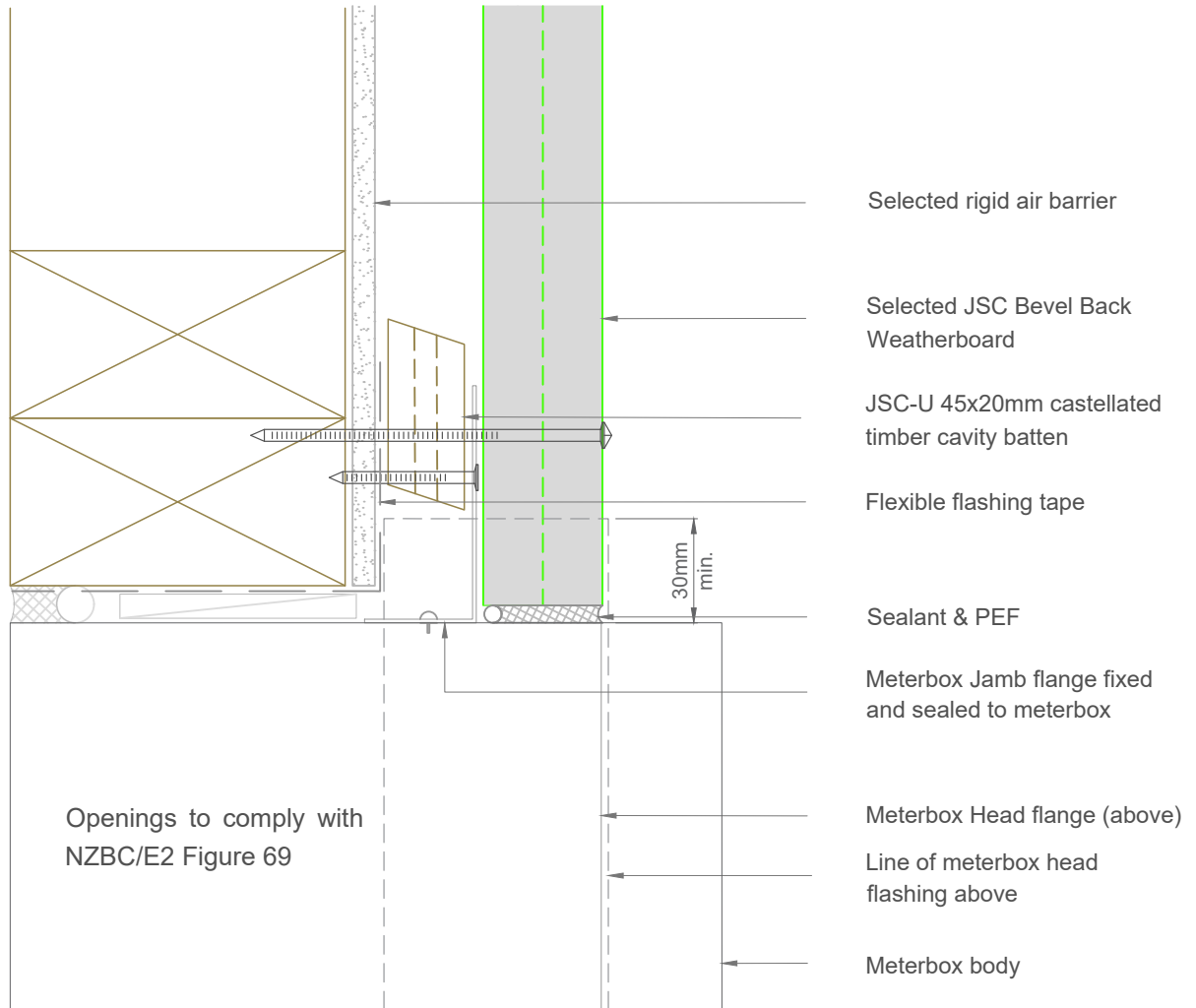
Date: 12/02/2024

Email: TechHelp@jstimber.co.nz

Auckland
20 Sawmill Road
Riverhead
☎ 09 412 2800

Christchurch
72 Hammersmith Drive
Wigram
☎ 03 348 9726

Web: www.jstimber.co.nz



Note: To be read in conjunction with complete JSC installation instructions • Details may be subject to change without notification

Meterbox Jamb Detail - Rigid Underlay

JB-R20-26

Scale: 1:2

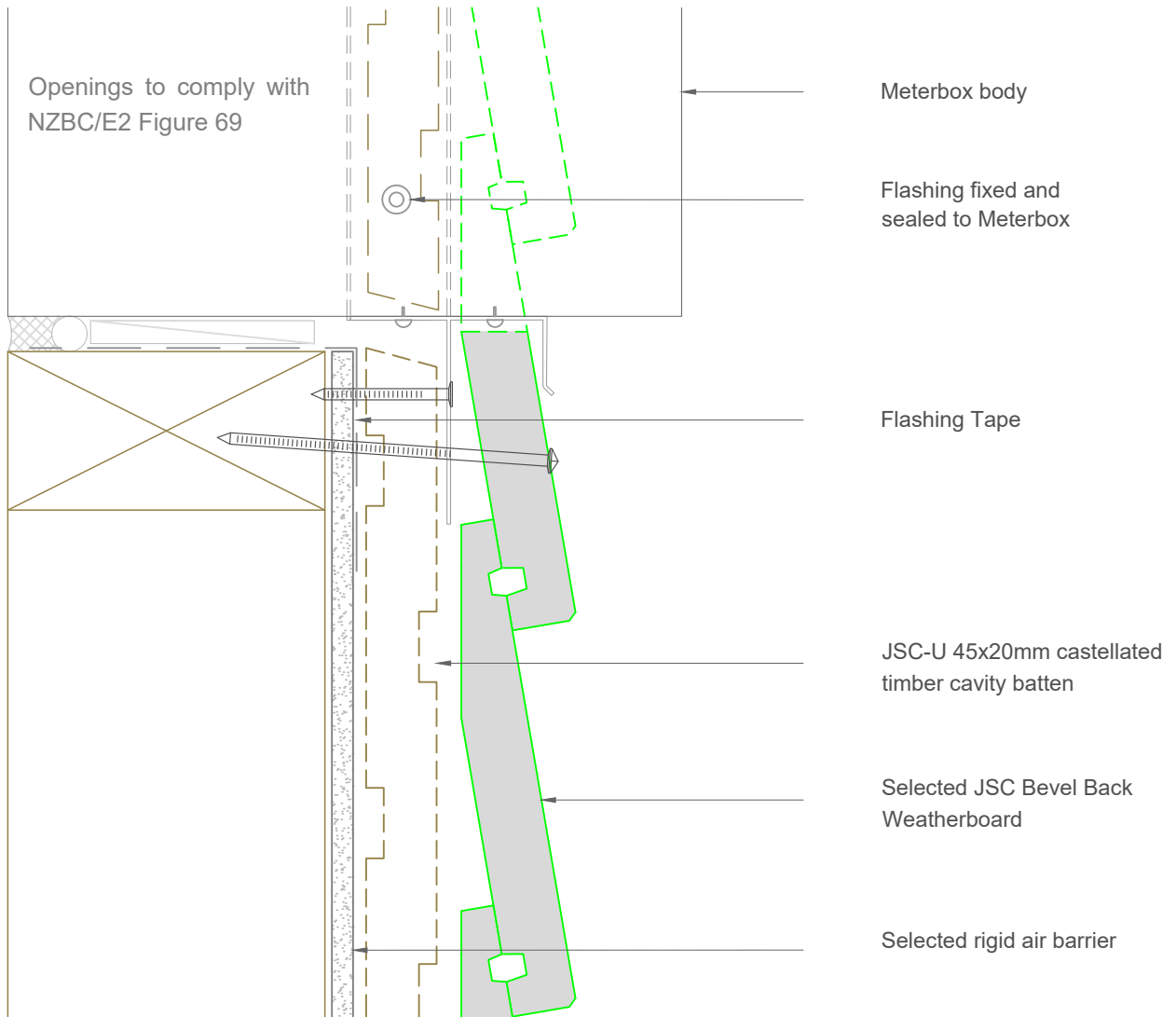
Date: 12/02/2024

Email: TechHelp@jstimber.co.nz

Auckland
20 Sawmill Road
Riverhead
☎ 09 412 2800

Christchurch
72 Hammersmith Drive
Wigram
☎ 03 348 9726

Web: www.jstimber.co.nz



Note: To be read in conjunction with complete JSC installation instructions • Details may be subject to change without notification

Meterbox Sill Detail - Rigid Underlay

JB-R20-27

Scale: 1:2

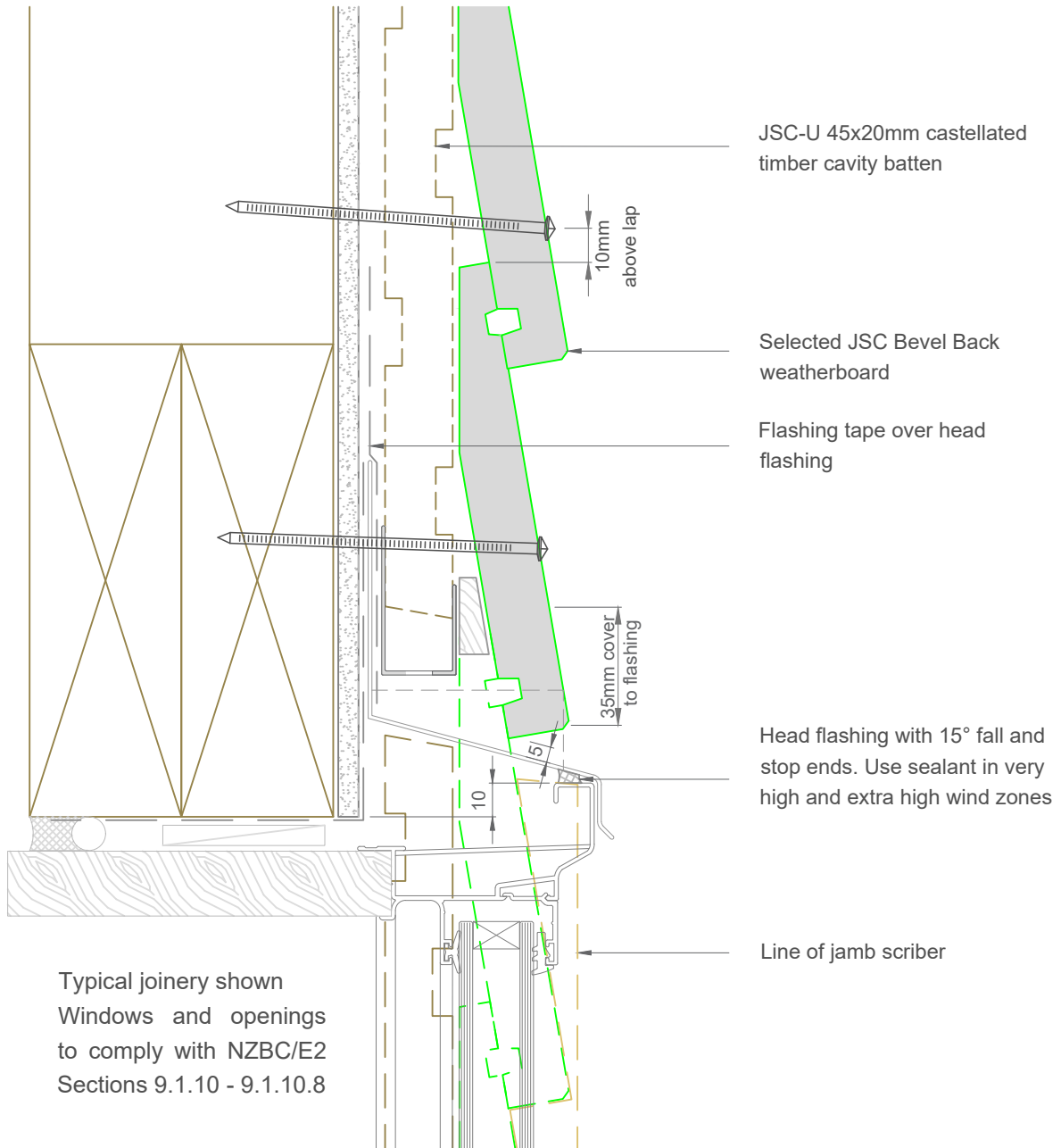
Date: 12/02/2024

Email: TechHelp@jstimber.co.nz

Auckland
20 Sawmill Road
Riverhead
☎ 09 412 2800

Christchurch
72 Hammersmith Drive
Wigram
☎ 03 348 9726

Web: www.jstimber.co.nz



Note: To be read in conjunction with complete JSC installation instructions • Details may be subject to change without notification

Window Head Detail - Rigid Underlay

JB-R20-30

Scale: 1:2

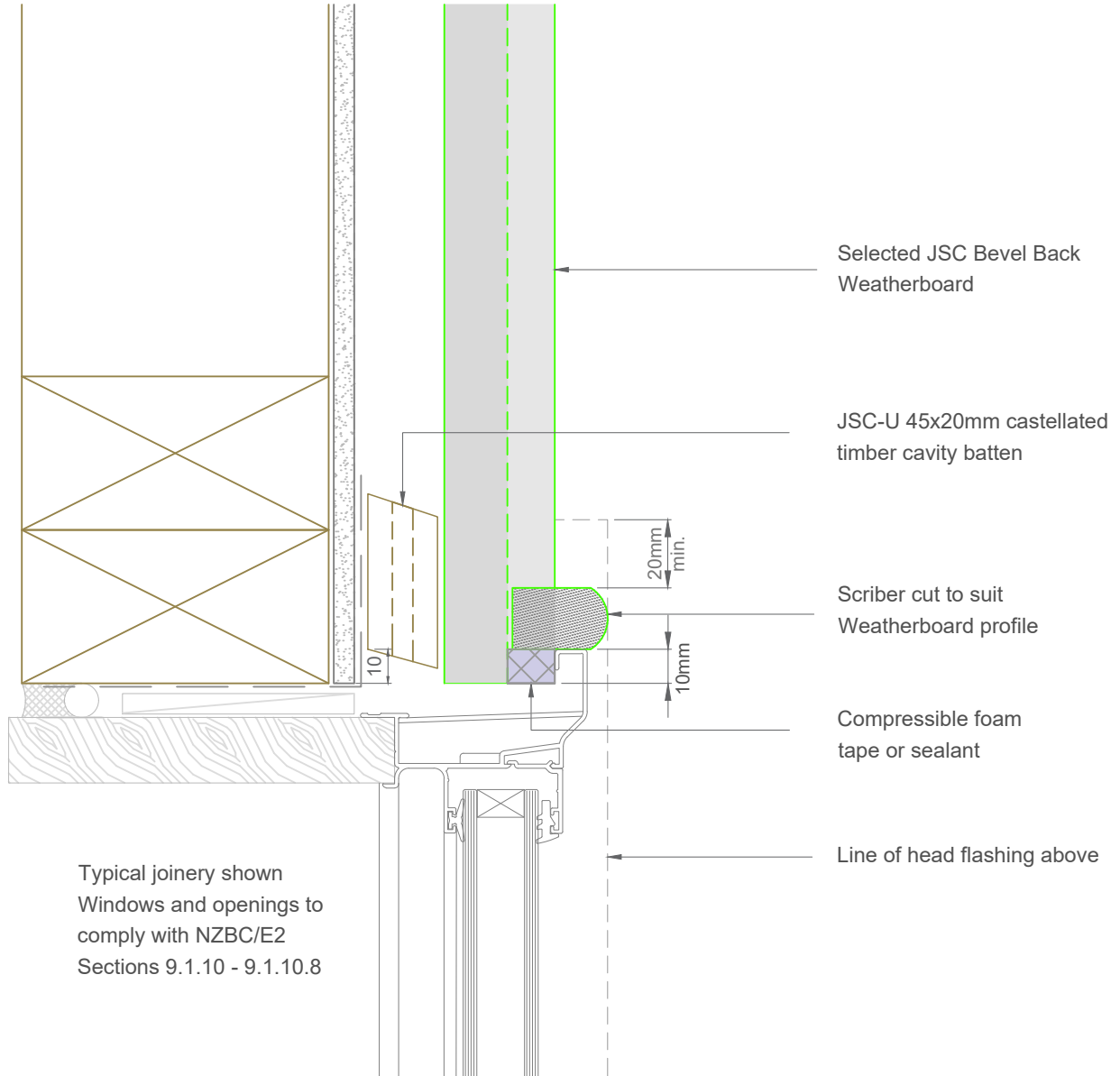
Date: 12/02/2024

Email: TechHelp@jsttimber.co.nz

Auckland
20 Sawmill Road
Riverhead
☎ 09 412 2800

Christchurch
72 Hammersmith Drive
Wigram
☎ 03 348 9726

Web: www.jsttimber.co.nz



Note: To be read in conjunction with complete JSC installation instructions • Details may be subject to change without notification

Window Jamb Detail - Rigid Underlay

JB-R20-31

Scale: 1:2

Date: 12/02/2024

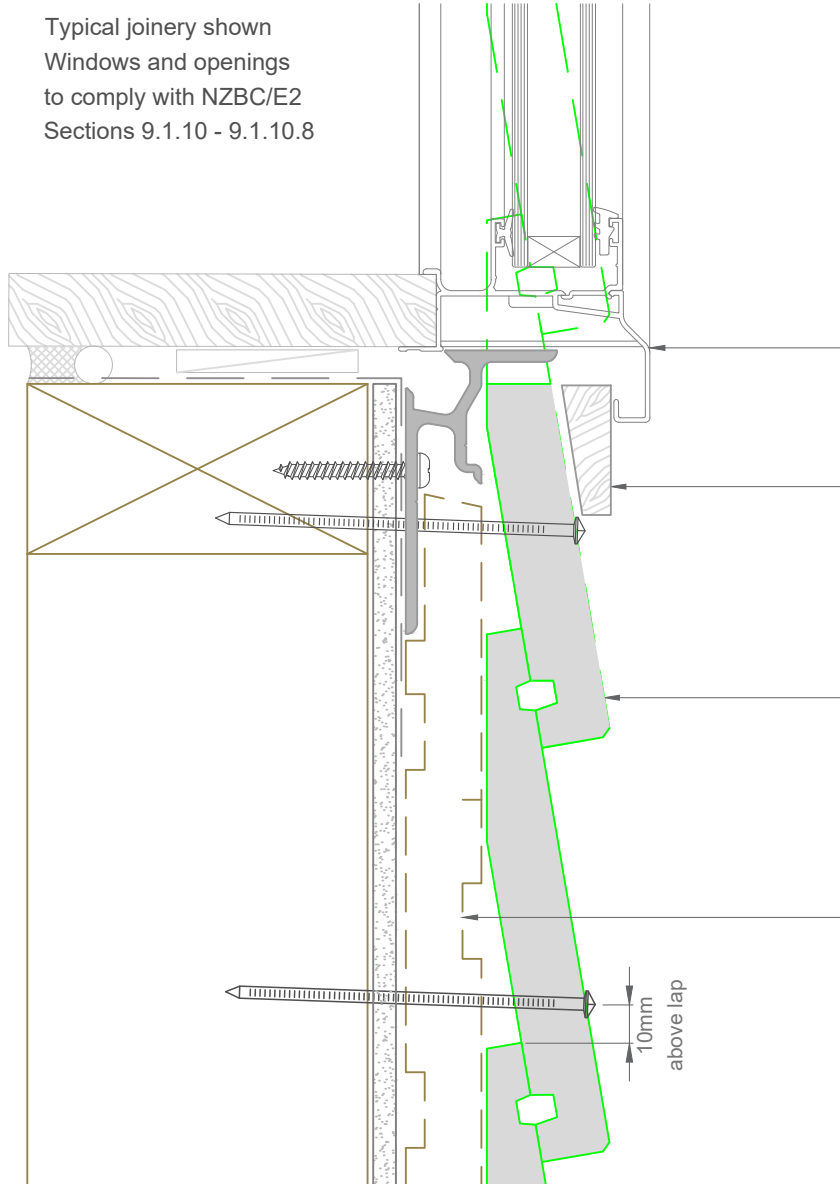
Email: TechHelp@jstimber.co.nz

Auckland
20 Sawmill Road
Riverhead
☎ 09 412 2800

Christchurch
72 Hammersmith Drive
Wigram
☎ 03 348 9726

Web: www.jstimber.co.nz

Typical joinery shown
Windows and openings
to comply with NZBC/E2
Sections 9.1.10 - 9.1.10.8



Provide joinery support when appropriate, ensure cavity construction is not compromised

Horizontal packer under window as necessary to suit profile

Selected JSC Bevel Back Weatherboard

JSC 45x20mm castellated timber cavity batten

10mm
above lap

Note: To be read in conjunction with complete JSC installation instructions • Details may be subject to change without notification

Window Sill Detail - Rigid Underlay

JB-R20-33

Scale: 1:2

Date: 12/02/2024

Email: TechHelp@jstimber.co.nz

Auckland
20 Sawmill Road
Riverhead
☎ 09 412 2800

Christchurch
72 Hammersmith Drive
Wigram
☎ 03 348 9726

Web: www.jstimber.co.nz