



# JSC CLIPP® BATTEN SYSTEM

Information Sheet | v1.2



PREMIUM ARCHITECTURAL  
& BUILDING SOLUTIONS



# INTRODUCTION

## Simplified Effortless Sophistication – Decorative Timber Battens Redefined

The JSC Clipp® Batten System is a decorative timber solution for interior walls and ceilings. Whether you're a DIY homeowner looking to refresh your space or an architect specifying a refined decorative finish, it delivers on style and simplicity. Using the patented Grad® aluminium rail and concealed clips, battens click into place - no adhesives, no nails, just clean lines and warm timber texture.

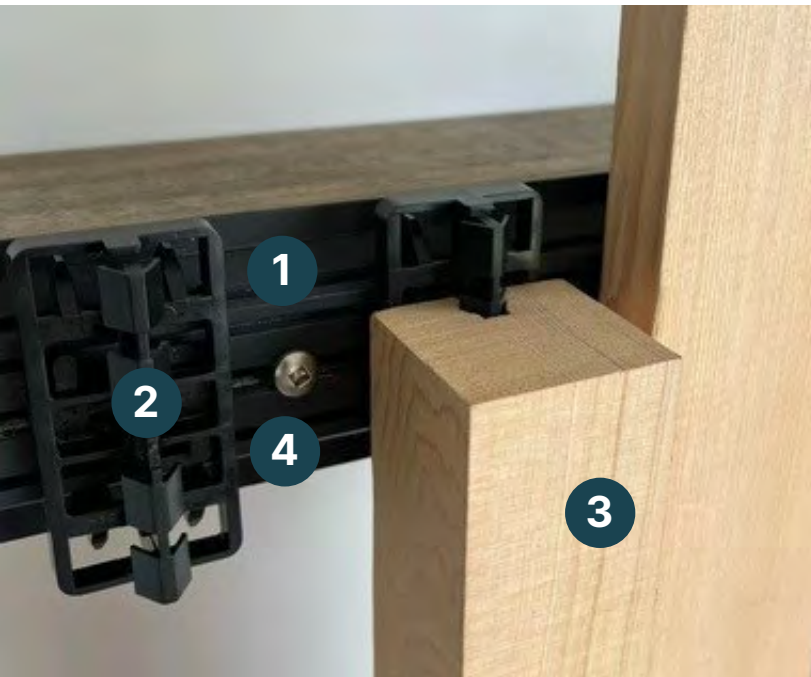
Installation is fast, tidy, and accurate, with long-term practicality built in. Individual battens can be removed or replaced without disturbing the rest of the installation. Sustainably sourced and locally profiled, the JSC Clipp® Batten System brings together natural beauty and functional performance for modern New Zealand interiors.

## Designed for Clean Lines & Concealed Fixings

Featuring an aluminium rail with the Grad® patented clipping system, this batten solution offers a beautiful aesthetic while simplifying installation. With no visible fixings on the timber face and removable battens, maintenance is made easy - perfect for access to services behind ceilings or walls.

System Composition - The system is made up of the following components:

- Grad® aluminium rails
- Grad® clips (available in 60mm, 80mm, or loose for adjustable spacing)
- JSC timber battens
- Clip Grip accessory to prevent slippage
- Removal tool



### 1 Grad® Flat Aluminium Rail

### 2 Grad® Clip

Polyoxymethylene (POM), an engineering thermoplastic. POM exhibits outstanding dimensional stability, rigidity, and high mechanical strength

### 3 Timber Batten

Sustainably sourced timber battens

### 4 Fixing

10g x 60mm Stainless Steel (A2-50)  
Pan Head screw (Refer to [Fixings](#))



Front Cover: TIM Exclusive Gardens | Netherlands | Imagery supplied by Grad®

This Image: International Interior Ceiling | Imagery supplied by Grad®

# KEY FEATURES

- Effortless Installation & Maintenance:** The JSC Clipp® Batten System guarantees straightforward installation, allowing for easy removal and replacement of individual battens when necessary. This is thanks to the lightweight Grad® aluminium system and dismantling tool. This makes ongoing access to systems such as HVAC behind walls simple and convenient, reducing disruption to the interior space.
- Tailored Aesthetic:** Deliberate spacing between battens creates visual depth. Multiple layout options are available using 60mm, 80mm, or adjustable clips. Refer to the next page for visual examples. The system boasts a sleek, fixture-free appearance, ensuring a seamless finish. Additionally, the use of sustainably sourced JSC timbers offers a wide range of colours and grains to suit your architectural projects.
- Specifically Designed for Walls and Ceilings:** This is a purely decorative timber batten system, expertly engineered for walls and ceilings, combining visual appeal with practical, concealed fixing. The Grad® system's lightweight design makes it easy to install, while the modular nature means battens can be replaced as needed over time.
- System Material Composition:** The JSC Clipp® Batten System is crafted with sustainably sourced timbers and every element of the system, from the aluminium rail to the timber battens and clips, is 100% recyclable. All components are selected for their eco-friendly attributes, ensuring a responsible choice for your architectural projects.
- Tried and Tested System - Grad® Patented Clipping System:** For almost 20 years, the Grad® team has established itself as a product of excellence. Its invisible fastening system with patented clipping ensures a quality, reliable solution. This time-tested system provides peace of mind for your architectural projects.



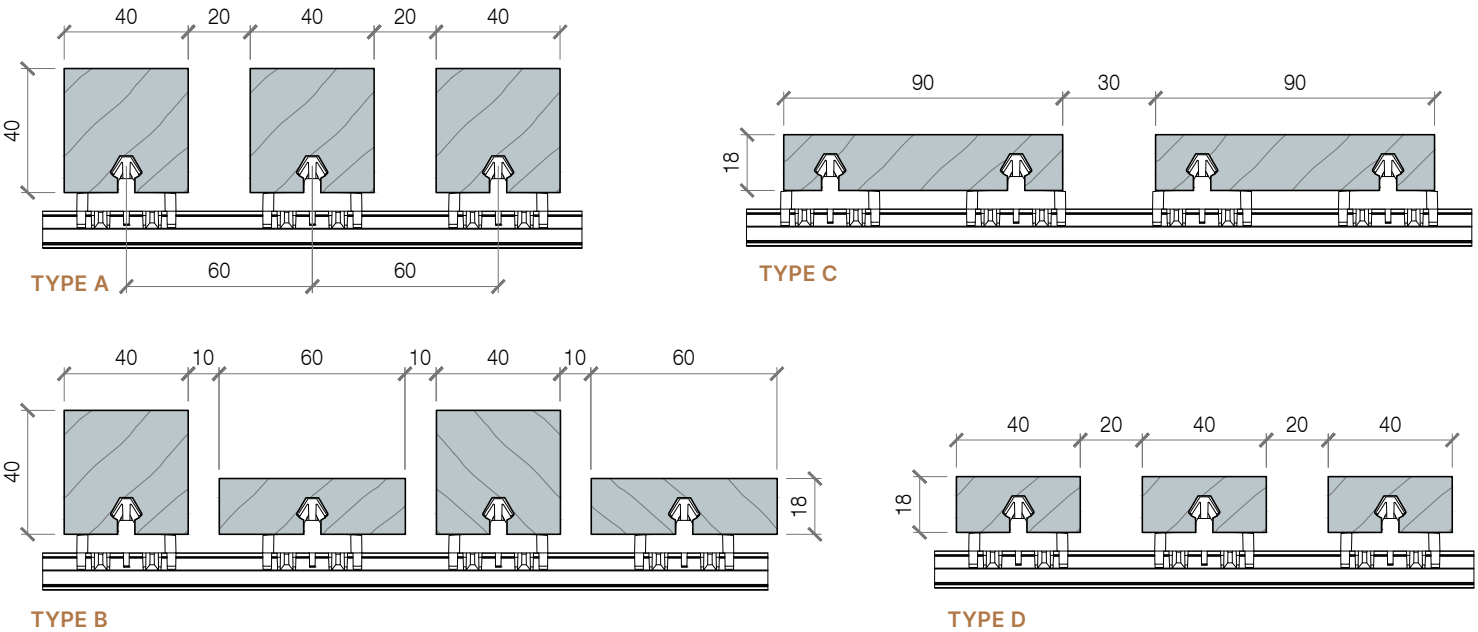
# BATTEN SELECTION

The JSC Clipp® system offers three clip spacing options:

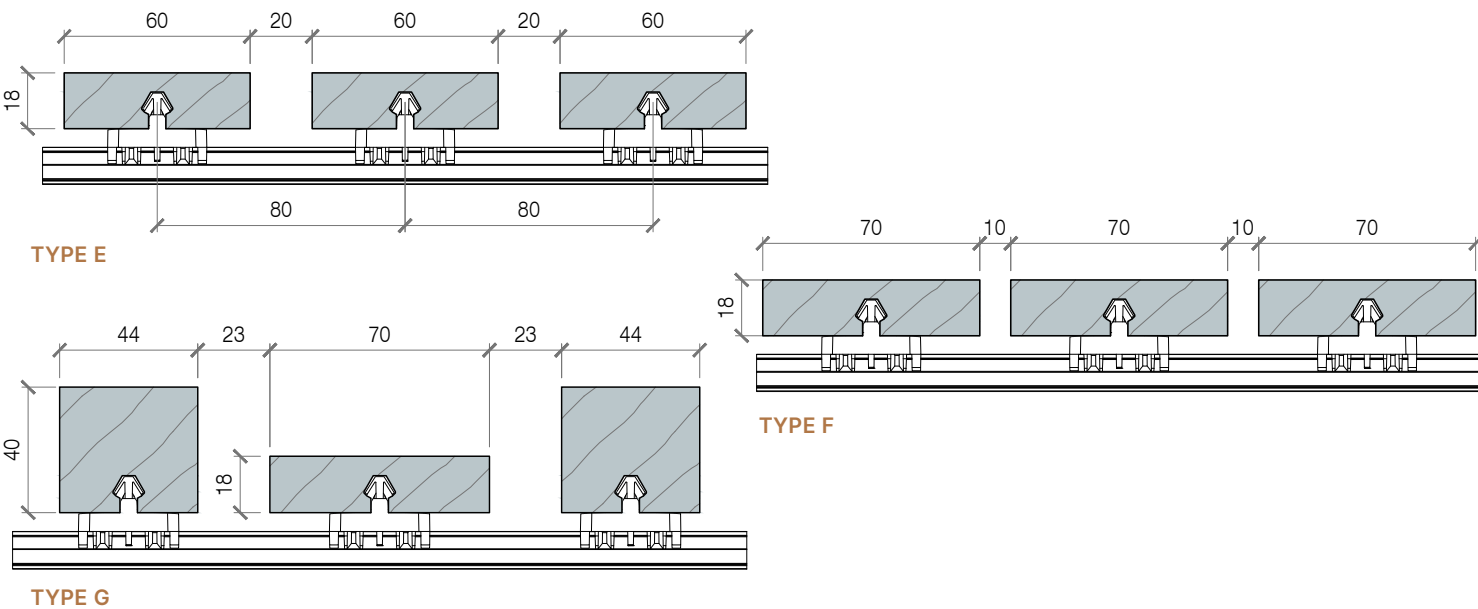
- 60mm spacing
- 80mm spacing
- Adjustable clips for custom layouts

## EXAMPLES OF POSSIBLE CONFIGURATIONS

### Clips at 60mm centres - 3960mm long Rail



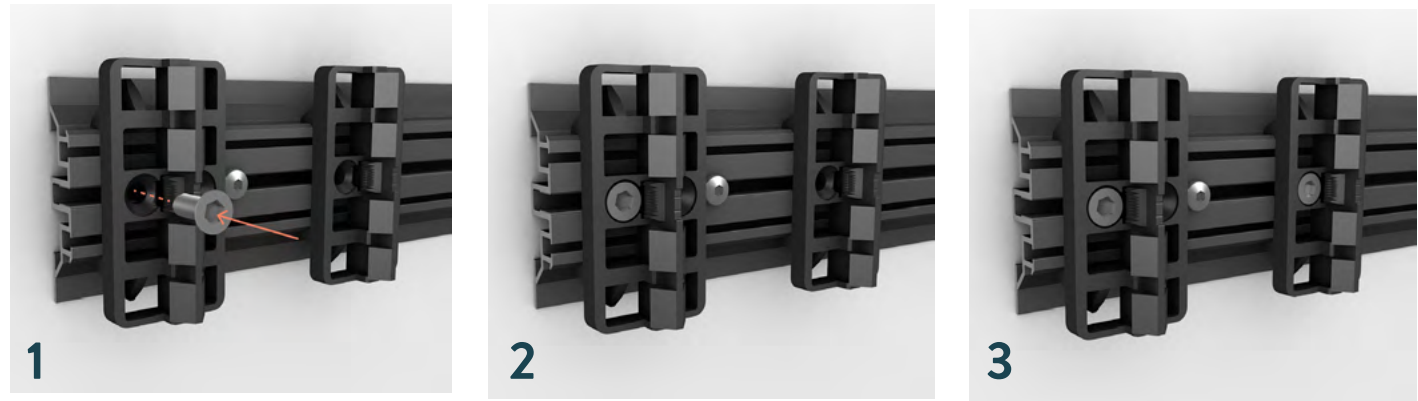
### Clips at 80mm centres - 3920mm long Rail



**NOTE:** Sizes may vary depending on the timber species and are subject to availability based on feedstock.

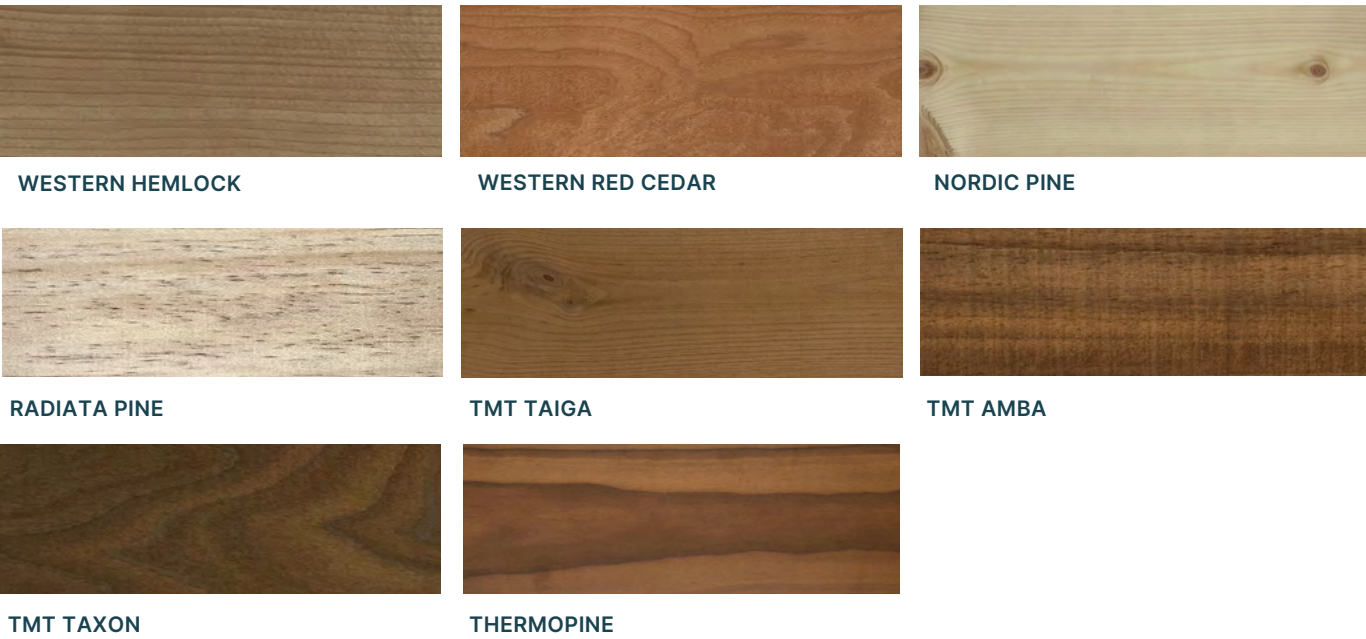
## Adjustable Clips - 3960mm long Rail

Designed to accommodate bespoke batten layouts and gap requirements through customised clip spacing. Clips are not pre-fixed to the aluminium rail and must be installed on-site.



Once positioned, the clip will be fixed in place with a M5×12 screw inserted into the central groove of the aluminium rail. When fixed to the rail, the clip can no longer be removed with the dismantling keys.

## COMMON SPECIES USED



Note: Other timber species may be available upon request. Talk to a JSC representative about specify project requirements

## FINISH & COATINGS

- **Finishes:** Depending on the species and application requirements, timber battens can be provided dressed, bandsawn, and brushed finished.
- **Coating options:** Clear and colour coating options are available. Visit our [coatings page](#) for coatings options. JSC Clipp is a decorative system, so fire performance requirements typically don't apply. However, if your project has specific needs, intumescent coatings can be added to help meet additional fire-related requirements. For advice on selecting the appropriate product and finish for your project, please contact JSC.





# WHERE CAN IT BE USED?

The JSC Clipp® system is suitable for interior applications, including:

- Lined walls
- Timber framing
- Lightweight steel framing
- Concrete substrates
- Walls or ceilings in residential or commercial spaces
- Batten layout can be horizontal or vertical depending on your design preferences.

WALLS	Substrate	Fixing
<p>Battens can be installed vertically or horizontally. The rails must be installed perpendicular to the battens.</p> <p>Rails to be fixed at 600mm maximum centres, or 450mm centres when using Radiata Pine, Nordic Pine, or Western Hemlock battens.</p> <p>Walls to be max. 4m height.</p>	Timber Frame	10g x 60mm Stainless Steel (A2-50) Pan Head screws @600mm crs max.
	Lightweight Steel Frame	10g x 45mm SDS (A2-50) Bugle Head screws @600mm crs max.
	Concrete (20mPa)	10g x 50mm Stainless Steel (A2-50) Pan Head screws with Ramplug DNP08 plastic plug @600mm crs max.

CEILINGS	Substrate	Fixing
<p>Battens can be installed direct fixed to the ceiling structure or on a Steel rail.</p> <p>Rails to be fixed at 600mm maximum centres, or 450mm centres when using Radiata Pine, Nordic Pine, or Western Hemlock battens.</p>	Timber Frame	10g x 60mm Stainless Steel (A2-50) Pan Head screws @600mm crs max.
	Steel Rail (Rondo system)*	10g x 45mm SDS (A2-50) Bugle Head screws @600mm crs max.

*\*For suspended ceiling applications, JSC recommends consulting your suspended ceiling manufacturer. The specifications of the system are determined by the weight of the selected timber battens and the specific engineering requirements of your project.*

# INSTALLATION INFORMATION

For installation and specification guidelines please download the [JSC Clipp Installation & Specification Guide](#).  
Need help? Our team is here to support you, get in touch with us today.



PREMIUM ARCHITECTURAL  
& BUILDING SOLUTIONS

**jsc.co.nz**

TechHelp@jsc.co.nz | Sales@jsc.co.nz

FIND JSC ONLINE



**AUCKLAND**

**(09) 412 2800**  
22 Sawmill Road  
Riverhead

**HAMILTON**

**0800 57 26 88**  
43 McKee Street  
Pukete

**WELLINGTON**

**0800 57 26 88**  
61 Seaview Road  
Seaview

**CHRISTCHURCH**

**(03) 348 9726**  
23 William Lewis Drive  
Sockburn