

PROJECT TIMBER

2024

Showcasing timber innovation and excellence
in New Zealand architecture and building

Crafted for connection

Featuring bespoke timber elements that
unite modern design with the natural
landscape at Ara Hills.



PREMIUM ARCHITECTURAL
& BUILDING SOLUTIONS

ISSUE 03

About the project

The design of the Ara Hills residence embodies a contemporary architectural take on a rustic aesthetic. Drawing inspiration from the natural topography of the land, the home integrates nature-inspired materials that harmonise with its elevated outlook. The vision was to create a seamless blend between the indoors and outdoors, achieved through tiered Vitex decking and strategically placed pocket windows that capture the stunning surrounding views. Large windows and doors were employed to connect the interior with the exterior environment, while the use of cedar ties the house to its natural surroundings, enhancing its appeal within the Ara Hills development that borders the Nukumea Reserve.

“Our take on a harmonious synthesis of rustic, rural architecture style with a blend of contemporary flair.”

JC Li & Brian Liu at L.W. Architecture





5 Bedrooms
 3.5 Bathrooms
 3 Lounge areas
 Double garage
 Walk in robe
 Open plan kitchen/dining
 Hidden scullery &
 butlers pantry
 Laundry/Mud room
 Spa pool & deck area

Land Area 555sqm

The home's layout

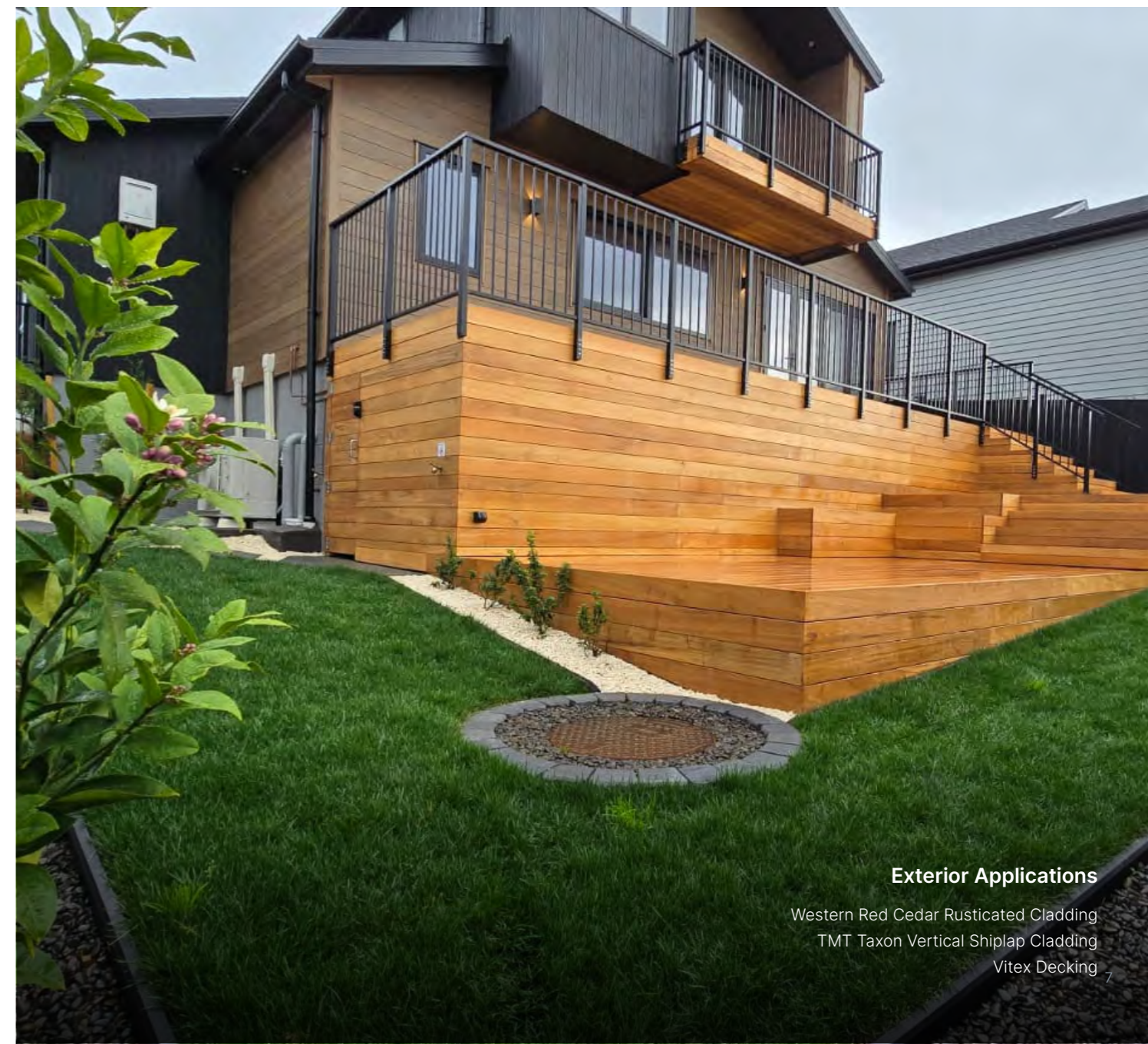
The expansive home spans 336 m² on a 555 m² plot, featuring five bedrooms, 3.5 bathrooms, and ample living spaces. The interior boasts an expansive kitchen with Porcelain Super White benchtops, a large scullery and butler's pantry, and three lounges.

Additional amenities include extensive storage solutions, a spa pool, and a fully landscaped low-maintenance garden. Practical features such as a double garage and a separate laundry/mudroom ensure functionality is not compromised. The home's design emphasises spaciousness and connectivity, with thoughtful placement of rooms to maximise views and sunlight.



The exterior

The exterior cladding of the home features a combination of JSC's Rusticated Western Red Cedar and TMT Taxon cladding. The horizontal rusticated Cedar, finished in Dryden Driftwood, imparts a rustic cabin look that complements the natural surroundings while adding elegance to the design. TMT Taxon cladding, coated in JSC Scumble Nightfall, provides a strong contrast with the rusticated cedar, highlighting the grain structure and adding modern elegance with its vertical application and highlighted grain structure. The tiered Vitex decking, finished with JSC Coda Clear, offers soft tones that blend naturally with the overall theme of the home, creating inviting outdoor spaces that seamlessly integrate with the landscape.

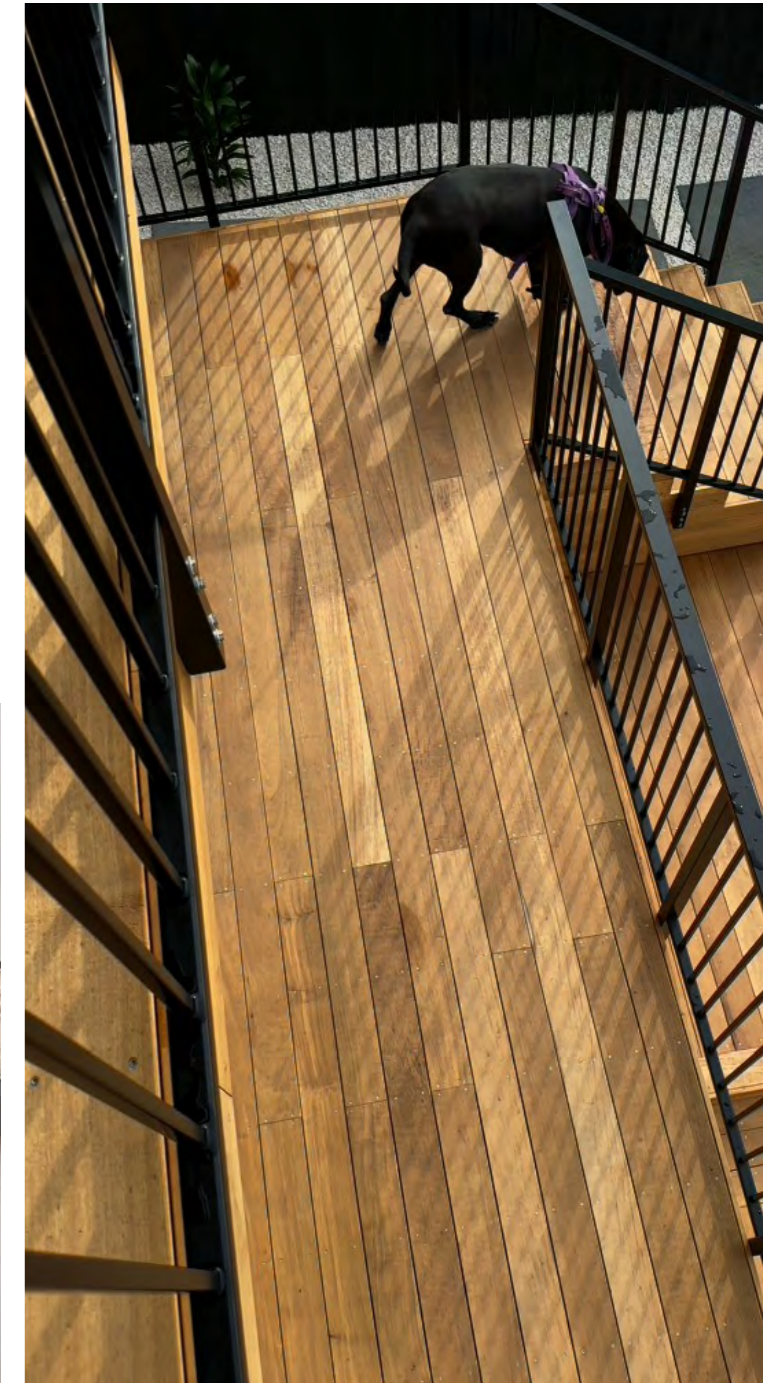
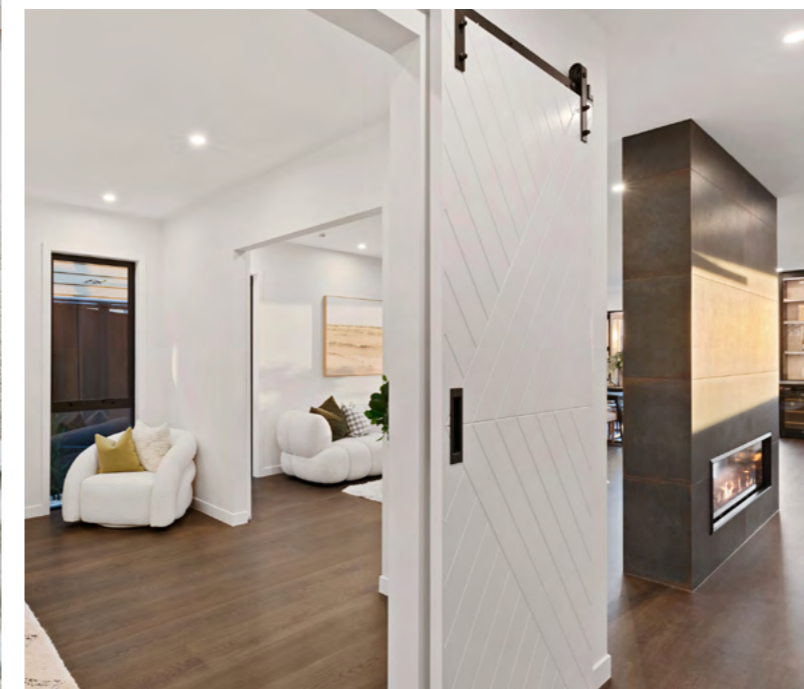


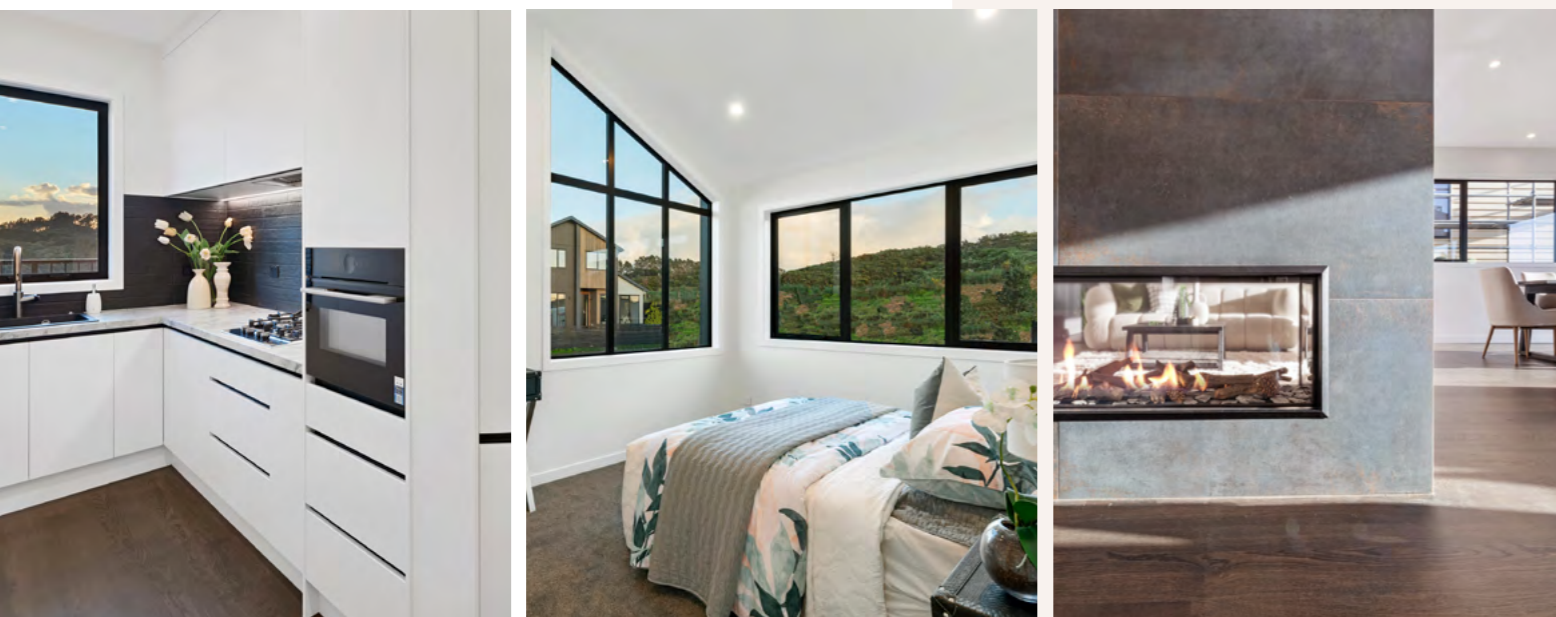
Exterior Applications

Western Red Cedar Rusticated Cladding
TMT Taxon Vertical Shiplap Cladding
Vitex Decking

Favourite aspects of the home

"The overall design incorporates a blend of rustic yet modern materials. This is evident throughout the home with varied textures of Italian tiles such as Vatican Vein Cut and Ferrocemento Nero on the fireplace, alongside Amaranto Black in the walk-in shower, creating a stunning array of porcelain stoneware inspired by natural marble. The walk-in shower features textured tiles, complemented by porcelain benchtops on the vanities that emulate the elegance of Super White Marble. European Oak flooring, highlighted by a dark Graphite stain, accentuates the Chevron patterned Okoume wood barn doors finished off with black hardware. The JSC TMT Taxon cladding, coated in the dark JSC Nightfall stain, adds a modern feel, while the Rusticated Cedar, finished with Dryden Driftwood stain, enhances the home's rustic charm. I wouldn't say there is a single aspect that is a favourite, rather the project as a whole is uniquely special." **Marc Burnett**

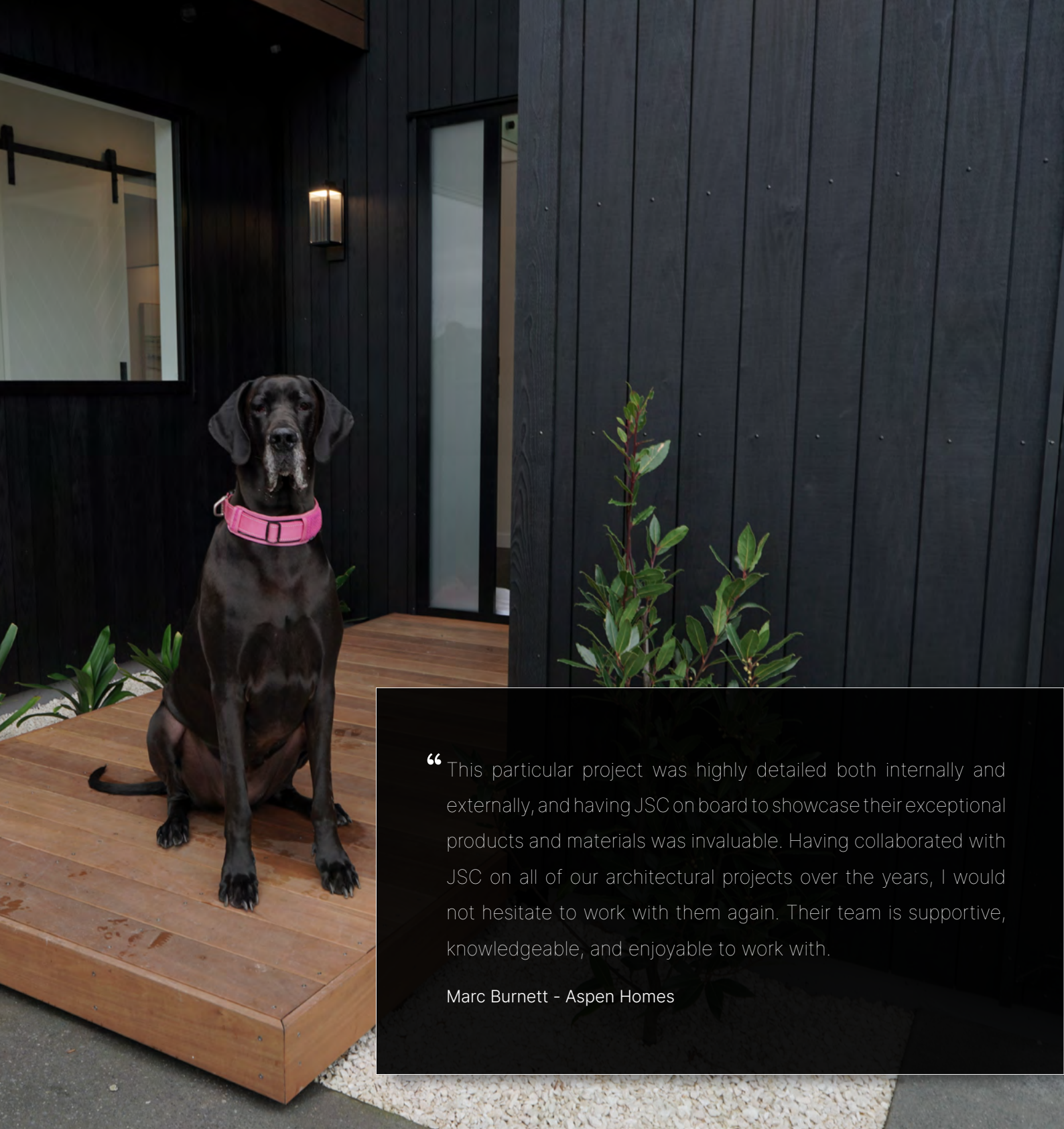




The interior - bedrooms, bathrooms, living spaces

Inside, the home portrays the aesthetic harmony established by the exterior through its thoughtful use of textures and colours. European Oak flooring stained in Graphite provides a subtle yet striking contrast against the Porcelain Super White island in the kitchen. This palette continues the exterior's rustic-modern blend, enhancing the cohesion between indoor and outdoor spaces. Okoume barn doors painted in Dulux Ōkārīto add a modern touch to traditional elements, mirroring the sophisticated rustic charm seen outside. Textured Italian Vatican Vein Porcelain Tiles replicate vein-cut travertine marble, lending elegance and warmth to the log-themed gas fireplace from Escea. Quantum Porcelain kitchen benchtops mimic the natural beauty of Super White Marble, ensuring that the luxurious feel established outside flows seamlessly indoors, creating a cohesive and inviting environment throughout the home.





“ This particular project was highly detailed both internally and externally, and having JSC on board to showcase their exceptional products and materials was invaluable. Having collaborated with JSC on all of our architectural projects over the years, I would not hesitate to work with them again. Their team is supportive, knowledgeable, and enjoyable to work with.

Marc Burnett - Aspen Homes



Project Timber is proudly produced by JSC – New Zealand's trusted supplier of premium architectural and building solutions.

Contact our team for more information about JSC products and services, for expert advice, or to discuss your building project.

jsc.co.nz

AUCKLAND
(09) 412 2800
22 Sawmill Road
Riverhead

HAMILTON
0800 57 26 88
43 McKee Street
Pukete

WELLINGTON
0800 57 26 88
61 Seaview Road
Seaview

CHRISTCHURCH
(03) 348 9726
72 Hammersmith Drive
Sockburn