



JSC RustiClad

Horizontal Rusticated Weatherboard
Cladding

45mm Cavity on Rigid Underlay

Version 1.3 | 24/02/2025



PREMIUM ARCHITECTURAL
& BUILDING SOLUTIONS

Index



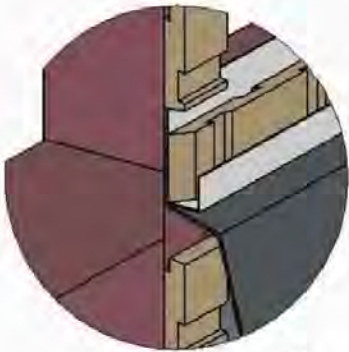
Cavity Setout Guide Fixed Vertically

JR-R45-SEC01	Sectional Detail – Plan View
JR-R45-SEC02	Sectional Detail – Cross Section View
JR-R45-01	Bottom Plate Detail
JR-R45-01A	Bottom Plate on Timber Detail
JR-R45-02	Top Plate Soffit Detail
JR-R45-03	Raking Soffit Detail
JR-R45-04	Bottom Plate Soffit Detail
JR-R45-05	Inter Storey Junction Detail
JR-R45-06	Parapet Detail
JR-R45-10	Internal Corner Detail
JR-R45-11	Internal Corner Detail
JR-R45-12	External Corner Box Detail
JR-R45-15	External Corner Detail – J42, J45
JR-R45-20	Scarf Detail
JR-R45-21	Pipe Penetration Detail
JR-R45-25	Meterbox Head Detail
JR-R45-26	Meterbox Jamb Detail
JR-R45-27	Meterbox Sill Detail
JR-R45-30	Window Head Detail
JR-R45-31	Window Jamb Detail
JR-R45-33	Window Sill Detail

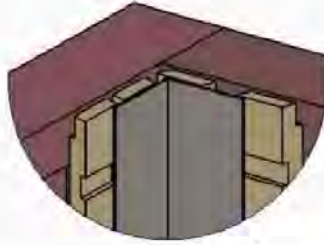
Cavity Batten Setout Fixed Vertically

CodeMark
CMNZ30081

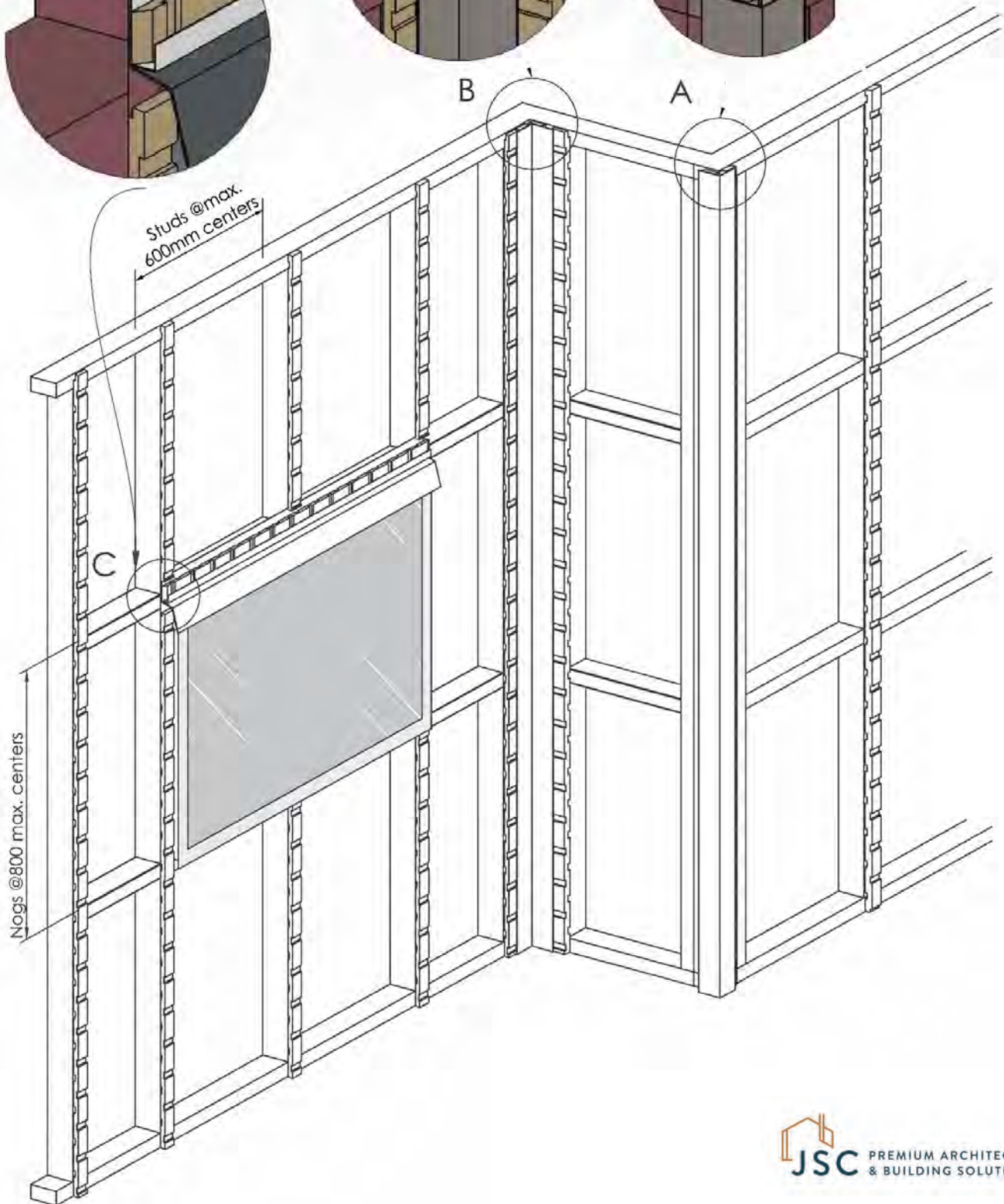
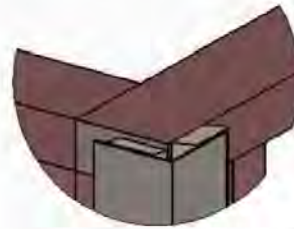
Window Details
JB-30,31,32,33



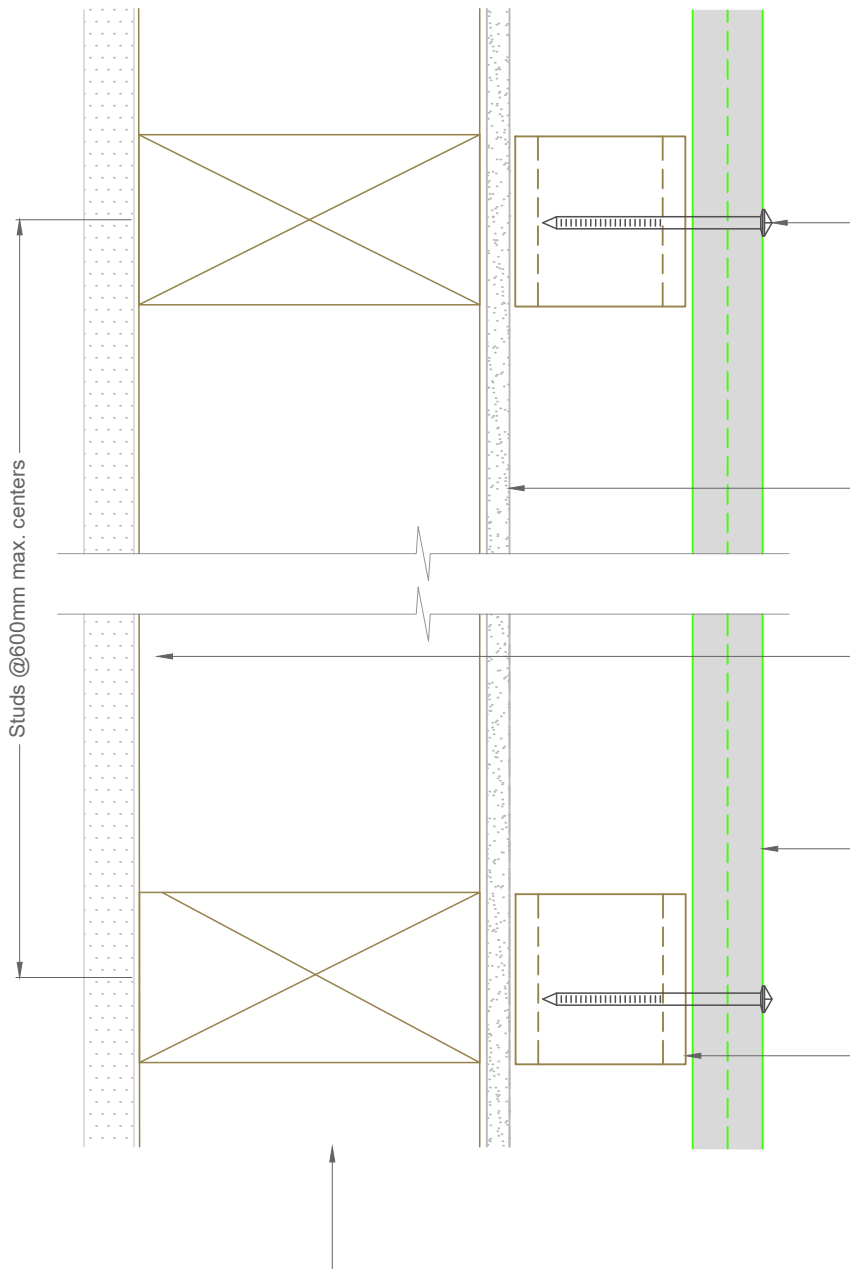
Internal Corner Details
JB-10,11



External Corner Details
JB-12,13



Plan View



Single fix at each stud with annular grooved stainless steel or silicon bronze nails as per NZBC/E2 Table 24

- Pre-drilled 1mm diameter smaller than nail gauge
- Nailed with a 2° upward slope
- 35mm min penetration into structural cavity batten
- Minimum 50mm from ends of boards except where shown otherwise

Flexible or Rigid wall underlay to comply with NZBC/E2 Table 23 installed to manufacturers specifications

Interior lining or use rigid air barrier for unlined walls such as gable ends.
See NZBC/E2 Paragraph 9.1.4

Selected Rusticated Weatherboard coated with approved coating to all 4 sides and ends before and during installation

JSC-V H3.2 45x45mm treated timber castellated cavity batten

- Keep 10mm gap between the cavity battens except at bottom plate
- Cut ends of vertical battens to slope away from wall (10-15°)
- See JSC structural battens fixing guide

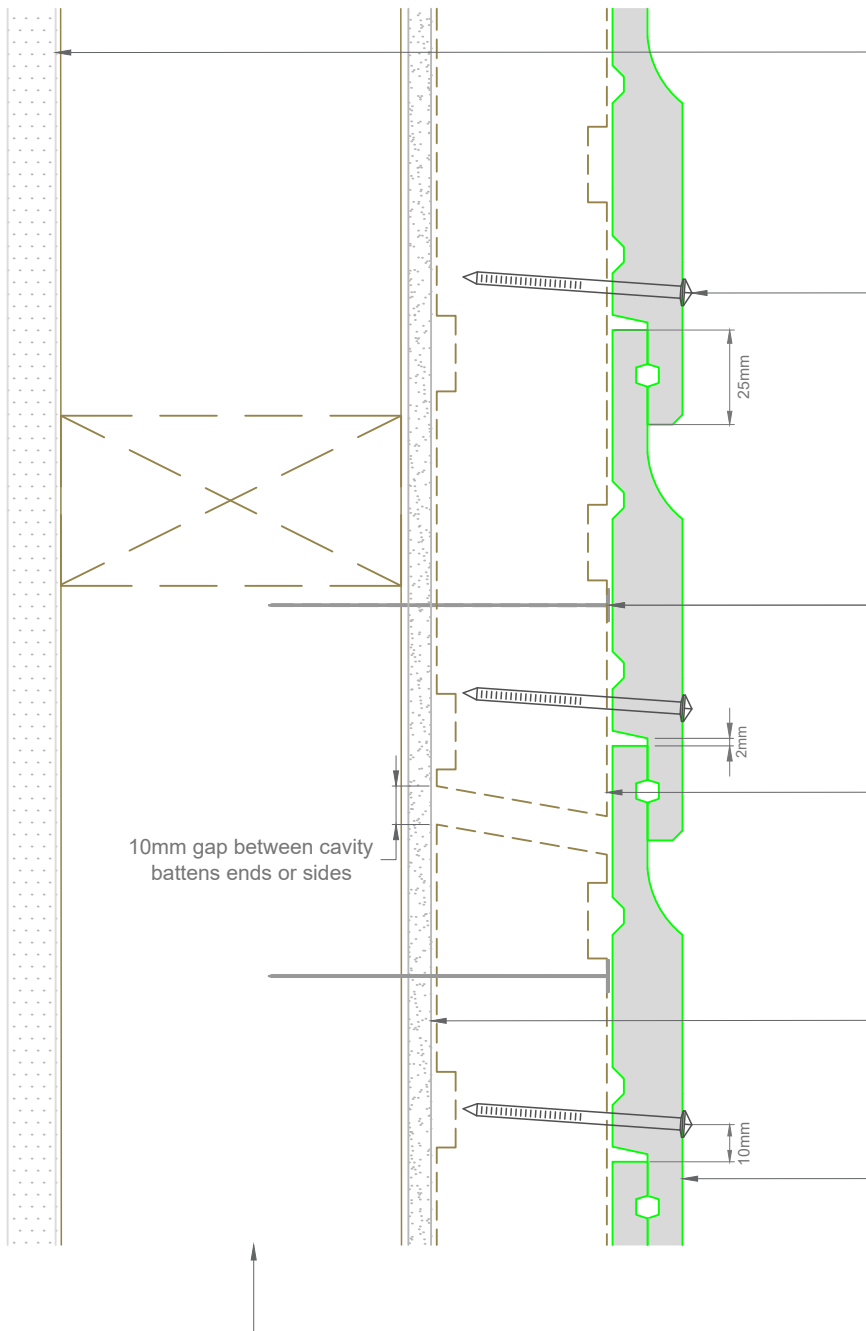
Framing to NZS 3604 or "fit for purpose"

Note: To be read in conjunction with complete JSC installation instructions • Details may be subject to change without notification

Sectional Detail - Rigid Underlay	JR-R45-SEC01	Scale: 1:2 Date: 24/02/2025
--	---------------------	--



Cross Section View



Interior lining or use rigid air barrier for unlined walls such as gable ends. See NZBC/E2 paragraph 9.1.4

Single fix at each nog with annular grooved stainless steel or silicon bronze nails as per NZBC/E2 Table 24

- Pre-drilled 1mm diameter smaller than nail gauge
- Nailed with a 2° upward slope
- 35mm min penetration into battens
- Nailed 10mm away from the edge of the lower board (35-40 mm from the edge of the board)
- Minimum 50mm from ends of boards except where shown otherwise

40-50mm Stainless Steel Clout

JSC-U H3.2 45x20mm treated timber castellated cavity batten

- Tacked on with SS Clout or similar
- Cut ends to slope away from wall (10-15°)
- See JSC structural cavity batten fixing guide

Flexible or rigid wall underlay to comply with NZBC/E2 Table 23 installed to manufacturers specifications

JSC rusticated weatherboard

- Coated with approved coating to all 4 sides and ends prior to installation
- 2mm expansion gap at the under lap

Framing to NZS 3604 or "fit for purpose"

Note: To be read in conjunction with complete JSC installation instructions • Details may be subject to change without notification

Sectional Detail - Rigid Underlay

JR-R45-SEC02

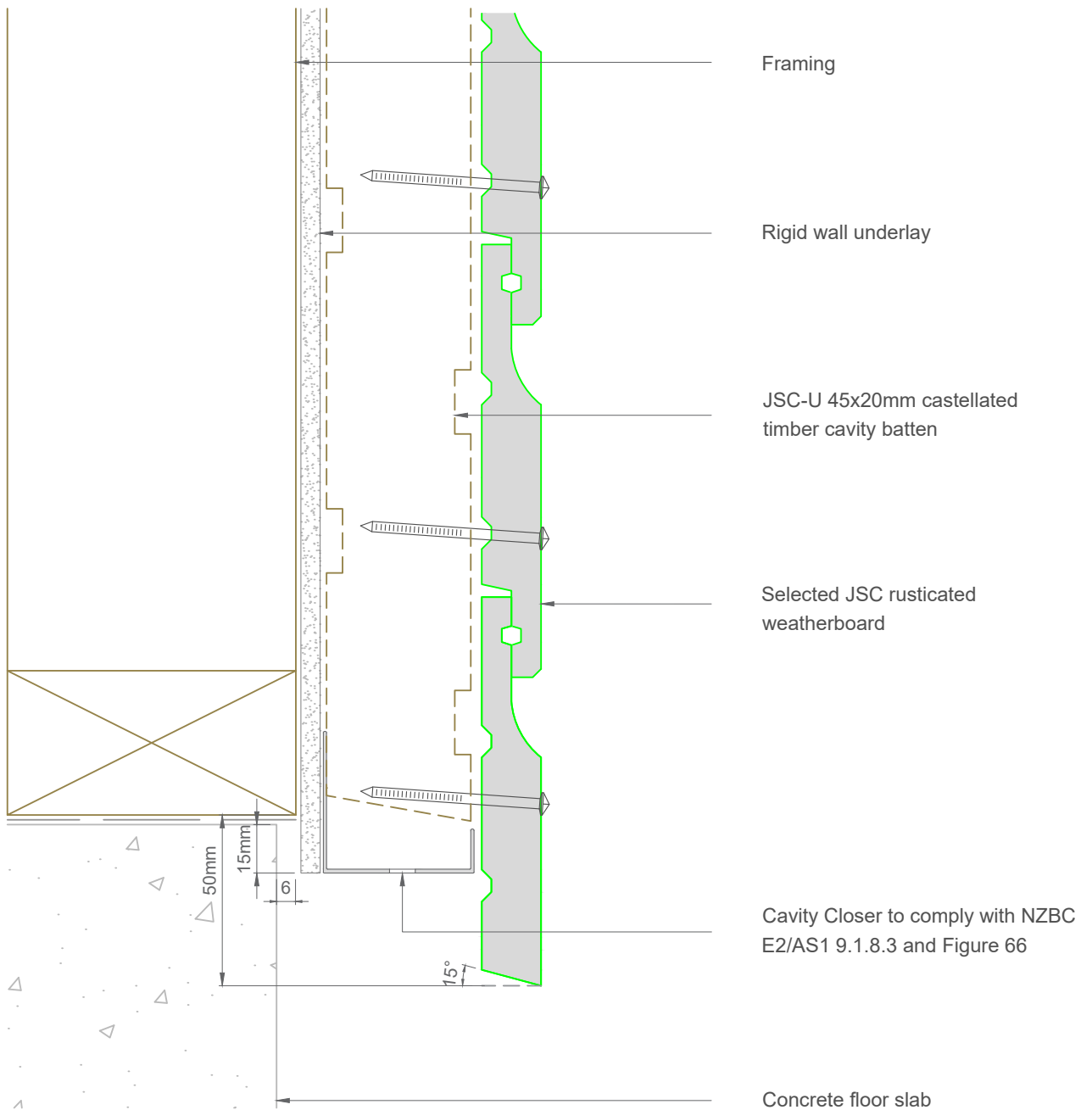
Scale: 1:2
Date: 24/02/2025

Email: TechHelp@jsctimber.co.nz

Web: www.jsctimber.co.nz

Auckland
20 Sawmill Road
Riverhead
☎ 09 412 2800

Christchurch
23 William Lewis Drive
Sockburn
☎ 03 348 9726



Note: To be read in conjunction with complete JSC installation instructions • Details may be subject to change without notification

Bottom Plate Detail - Rigid Underlay

JR-R45-01

Scale: 1:2
Date: 24/02/2025

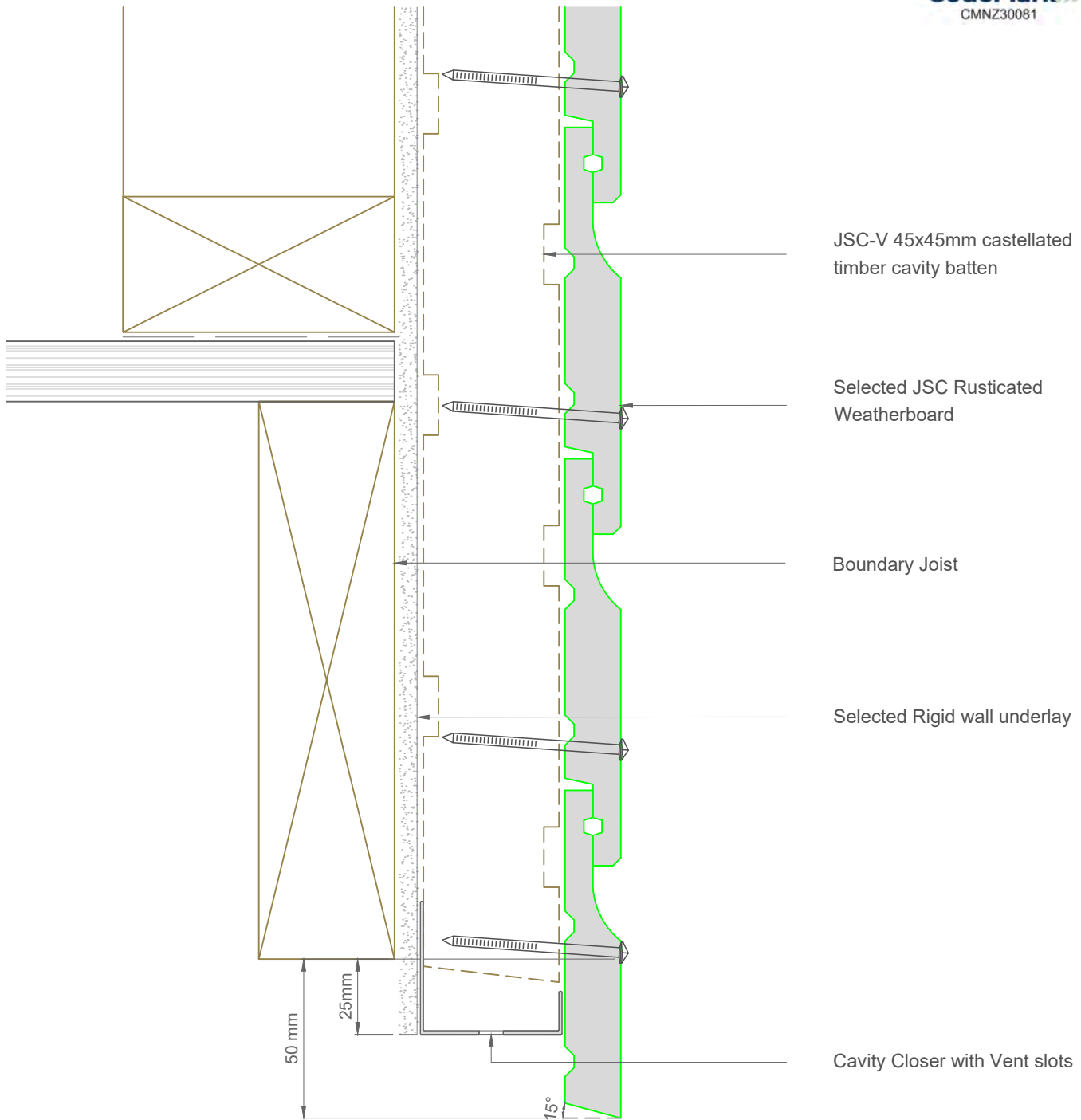
Email: TechHelp@jsctimber.co.nz

Web: www.jsctimber.co.nz

Auckland
20 Sawmill Road
Riverhead
☎ 09 412 2800

Christchurch
23 William Lewis Drive
Sockburn
☎ 03 348 9726

JSC PREMIUM ARCHITECTURAL
& BUILDING SOLUTIONS



Note:- Maintain ground clearance as per NZBC/E2 paragraph 9.1.3.3 and Table 18

Note: To be read in conjunction with complete JSC installation instructions • Details may be subject to change without notification

Bottom Plate on Timber Detail - Rigid Underlay

JR-R45-01A

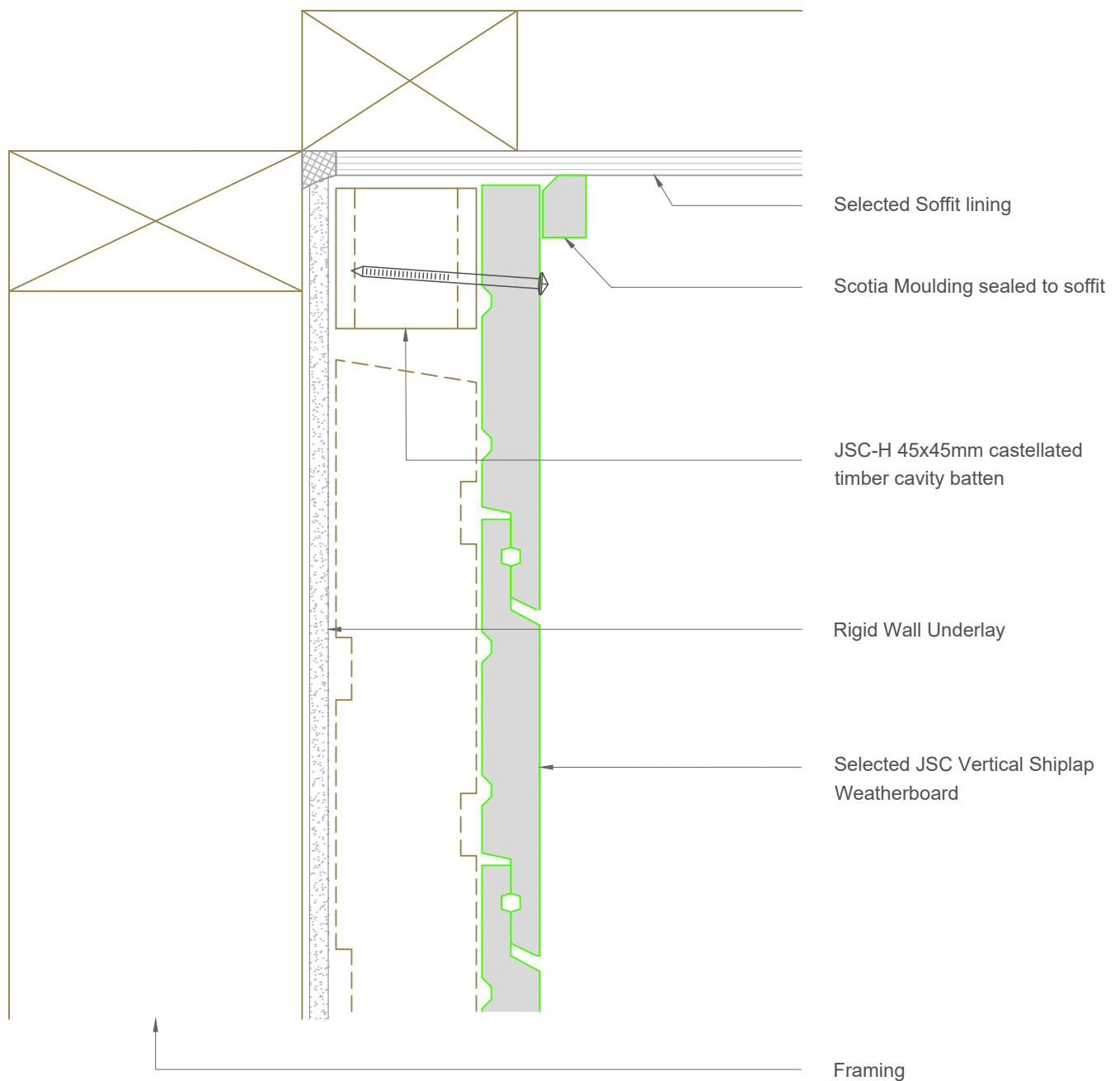
Scale: 1:2
Date: 24/02/2025

Email: TechHelp@jsttimber.co.nz

Web: www.jsttimber.co.nz

Auckland
20 Sawmill Road
Riverhead
☎ 09 412 2800

Christchurch
23 William Lewis Drive
Sockburn
☎ 03 348 9726



Note: To be read in conjunction with complete JSC installation instructions • Details may be subject to change without notification

Top Plate Soffit Detail - Rigid Underlay

JR-R45-02

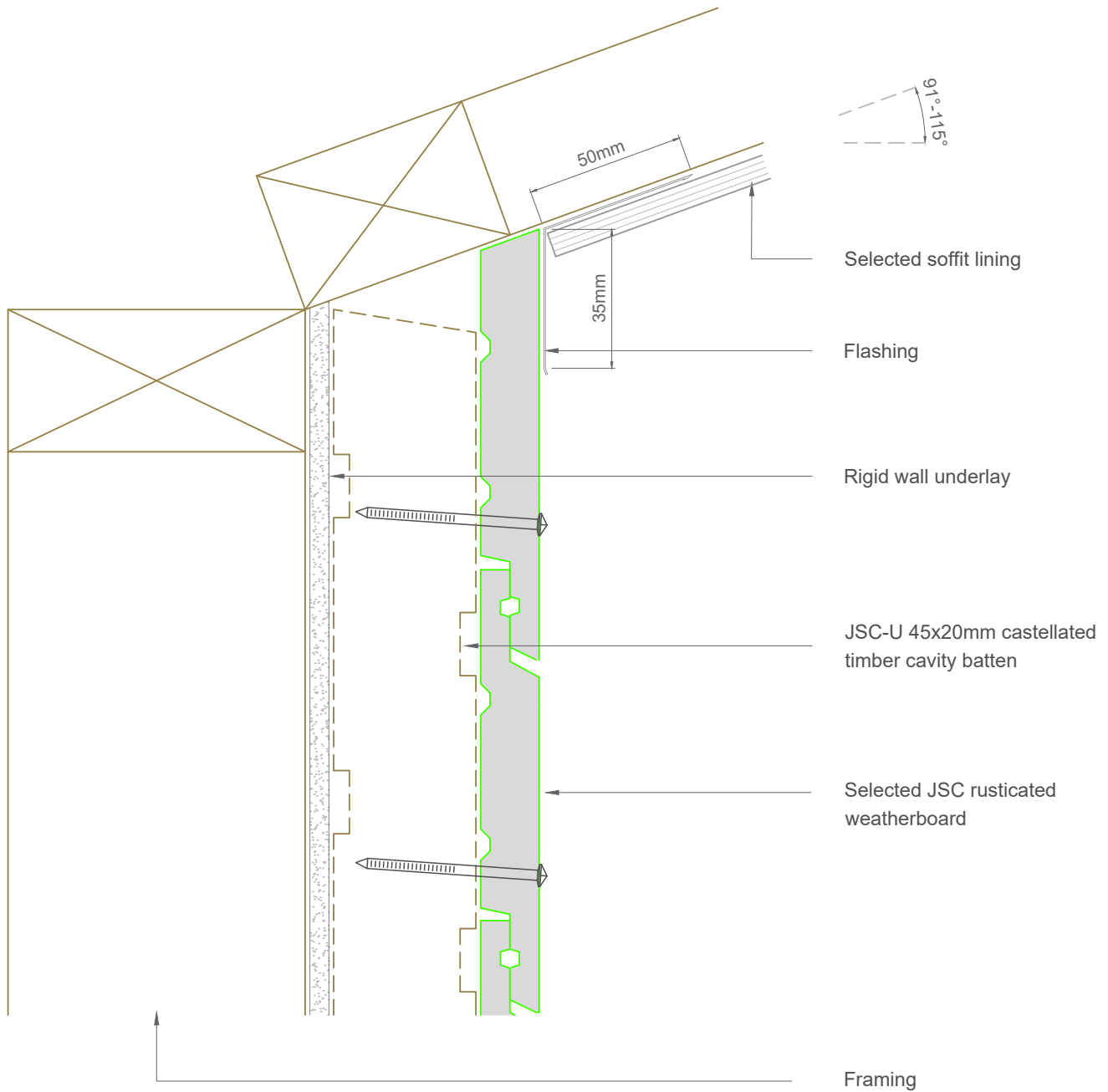
Scale: 1:2
Date: 24/02/2025

Email: TechHelp@jsctimber.co.nz

Web: www.jsctimber.co.nz

Auckland
20 Sawmill Road
Riverhead
☎ 09 412 2800

Christchurch
23 William Lewis Drive
Sockburn
☎ 03 348 9726



Note: To be read in conjunction with complete JSC installation instructions • Details may be subject to change without notification

Raking Soffit Detail - Rigid Underlay

JR-R45-03

Scale: 1:2
Date: 24/02/2025

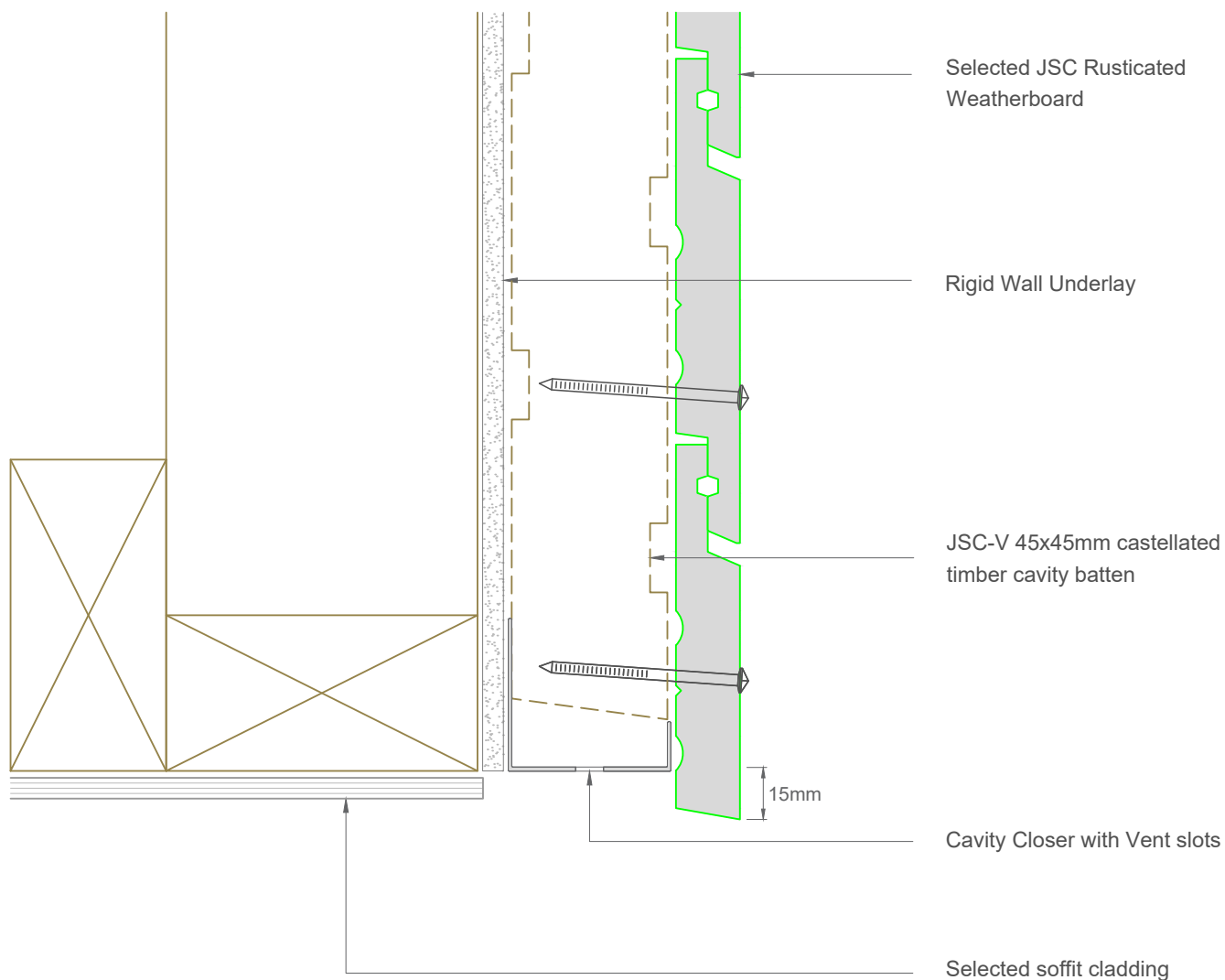
Email: TechHelp@jsctimber.co.nz

Web: www.jsctimber.co.nz

Auckland
20 Sawmill Road
Riverhead
☎ 09 412 2800

Christchurch
23 William Lewis Drive
Sockburn
☎ 03 348 9726

 **JSC** PREMIUM ARCHITECTURAL
& BUILDING SOLUTIONS



Note: To be read in conjunction with complete JSC installation instructions • Details may be subject to change without notification

Bottom Plate Soffit Detail - Rigid Underlay

JR-R45-04

Scale: 1:2

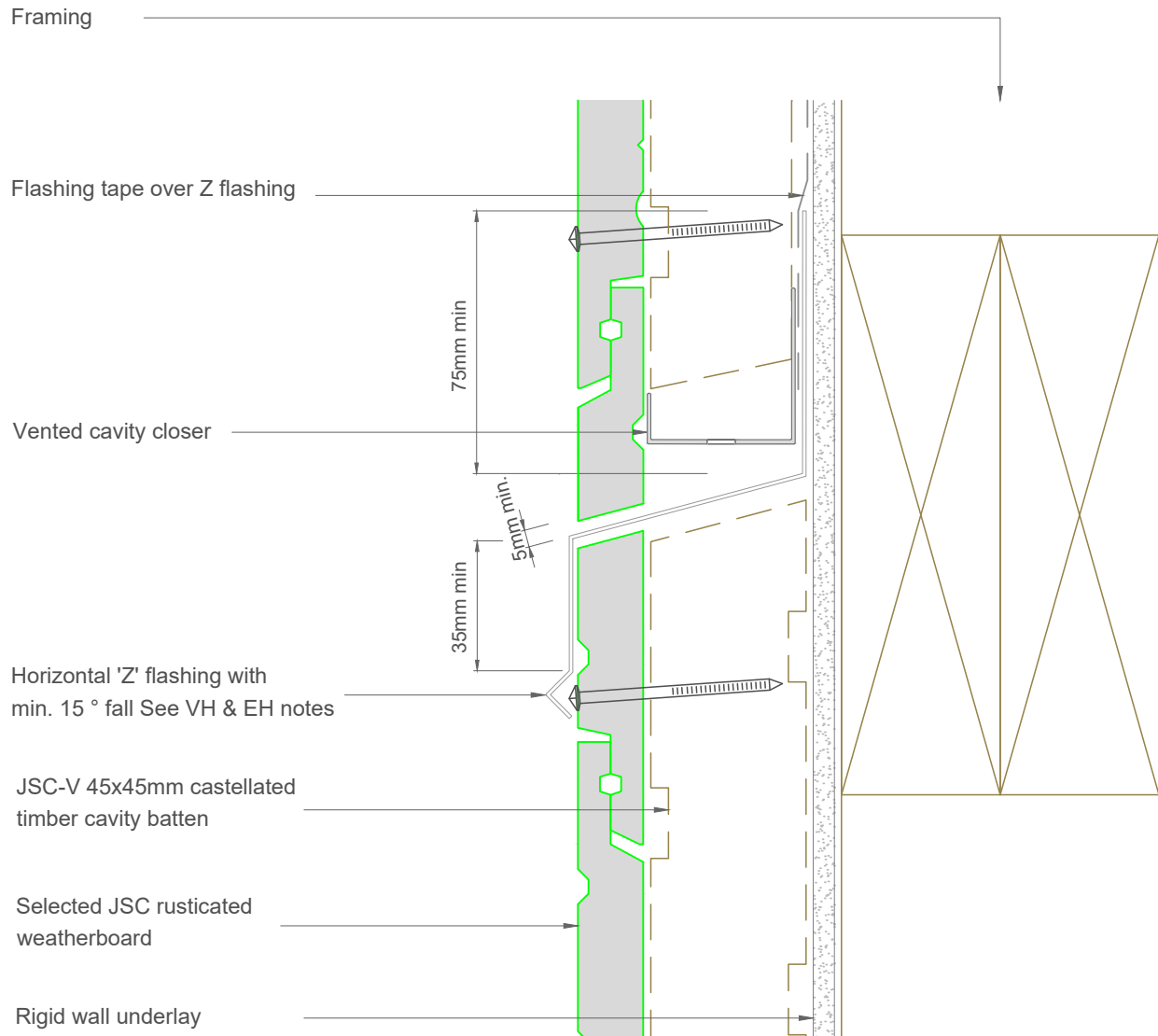
Date: 24/02/2025

Email: TechHelp@jsctimber.co.nz

Web: www.jsctimber.co.nz

Auckland
20 Sawmill Road
Riverhead
☎ 09 412 2800

Christchurch
23 William Lewis Drive
Sockburn
☎ 03 348 9726



Note: To be read in conjunction with complete JSC installation instructions • Details may be subject to change without notification

Inter Storey Junction Detail - Rigid Underlay

JR-R45-05

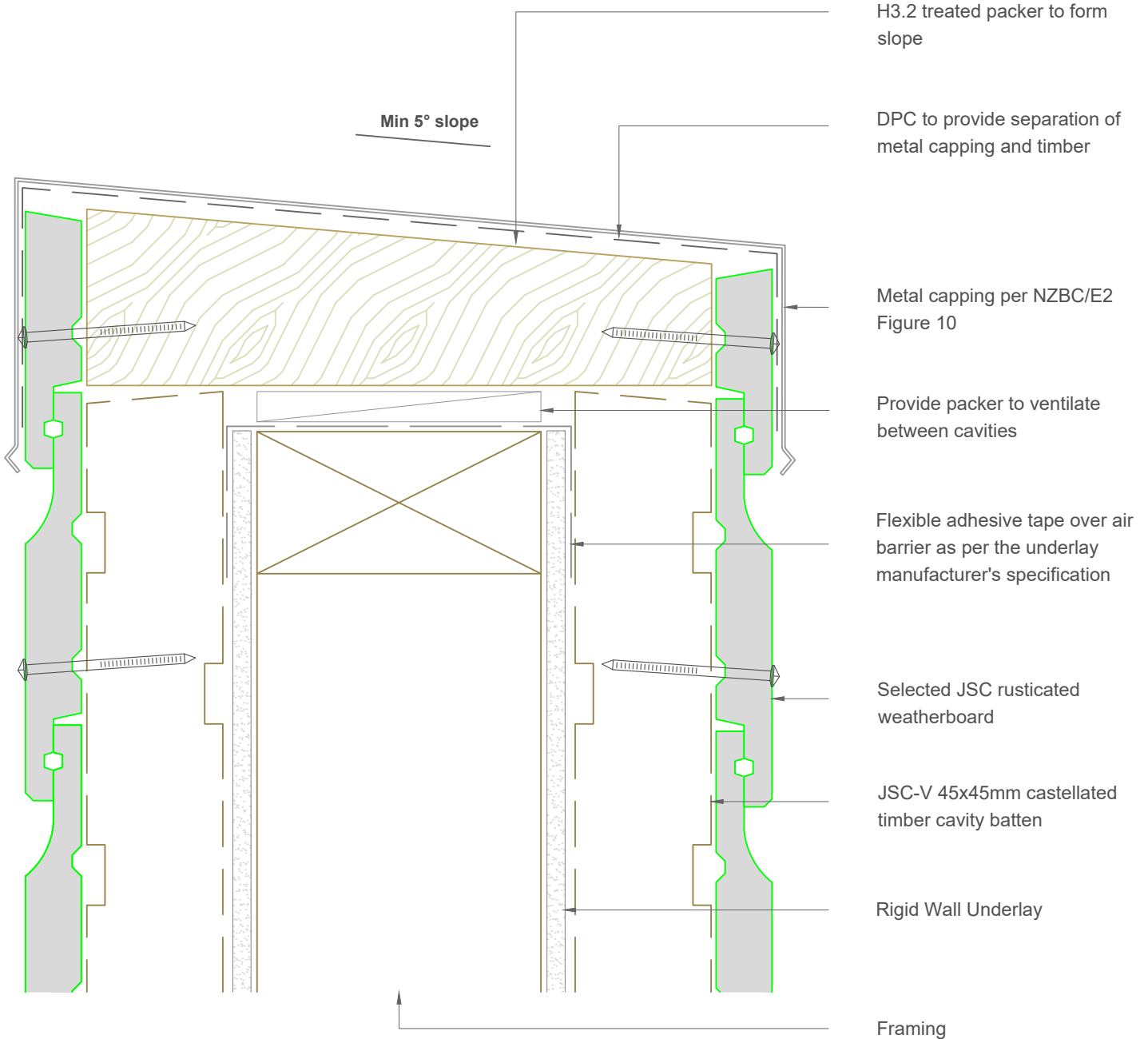
Scale: 1:2
Date: 24/02/2025

Email: TechHelp@jsctimber.co.nz

Web: www.jsctimber.co.nz

Auckland
20 Sawmill Road
Riverhead
☎ 09 412 2800

Christchurch
23 William Lewis Drive
Sockburn
☎ 03 348 9726



Note:- Parapet Design & installation should comply to NZBC/E2 Section 6

Note: To be read in conjunction with complete JSC installation instructions • Details may be subject to change without notification

Parapet Detail - Rigid Underlay

JR-R45-06

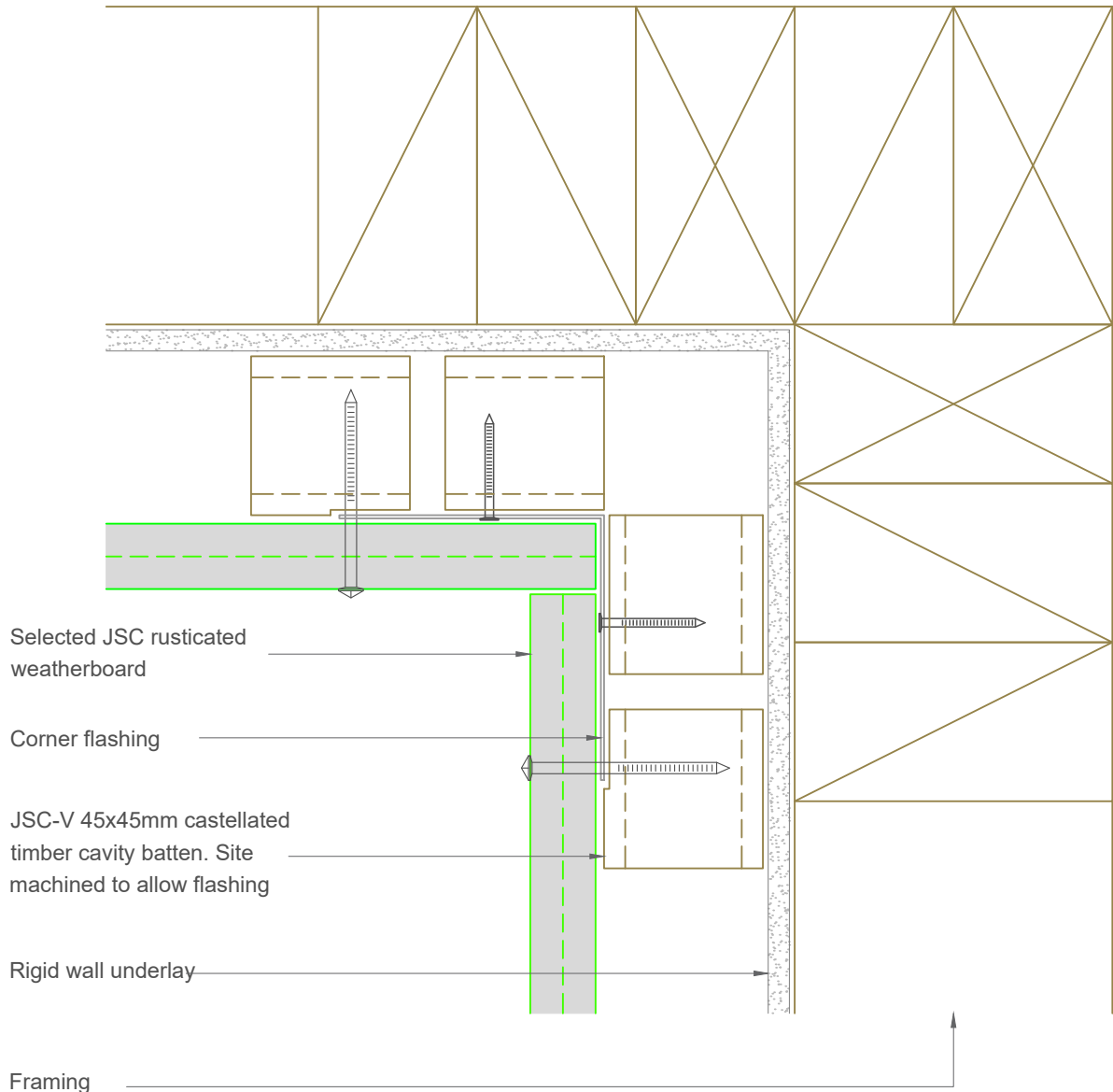
Scale: 1:2
Date: 24/02/2025

Email: TechHelp@jsttimber.co.nz

Web: www.jsttimber.co.nz

Auckland
20 Sawmill Road
Riverhead
☎ 09 412 2800

Christchurch
23 William Lewis Drive
Sockburn
☎ 03 348 9726



Note: To be read in conjunction with complete JSC installation instructions • Details may be subject to change without notification

Internal Corner Detail - Rigid Underlay

JR-R45-10

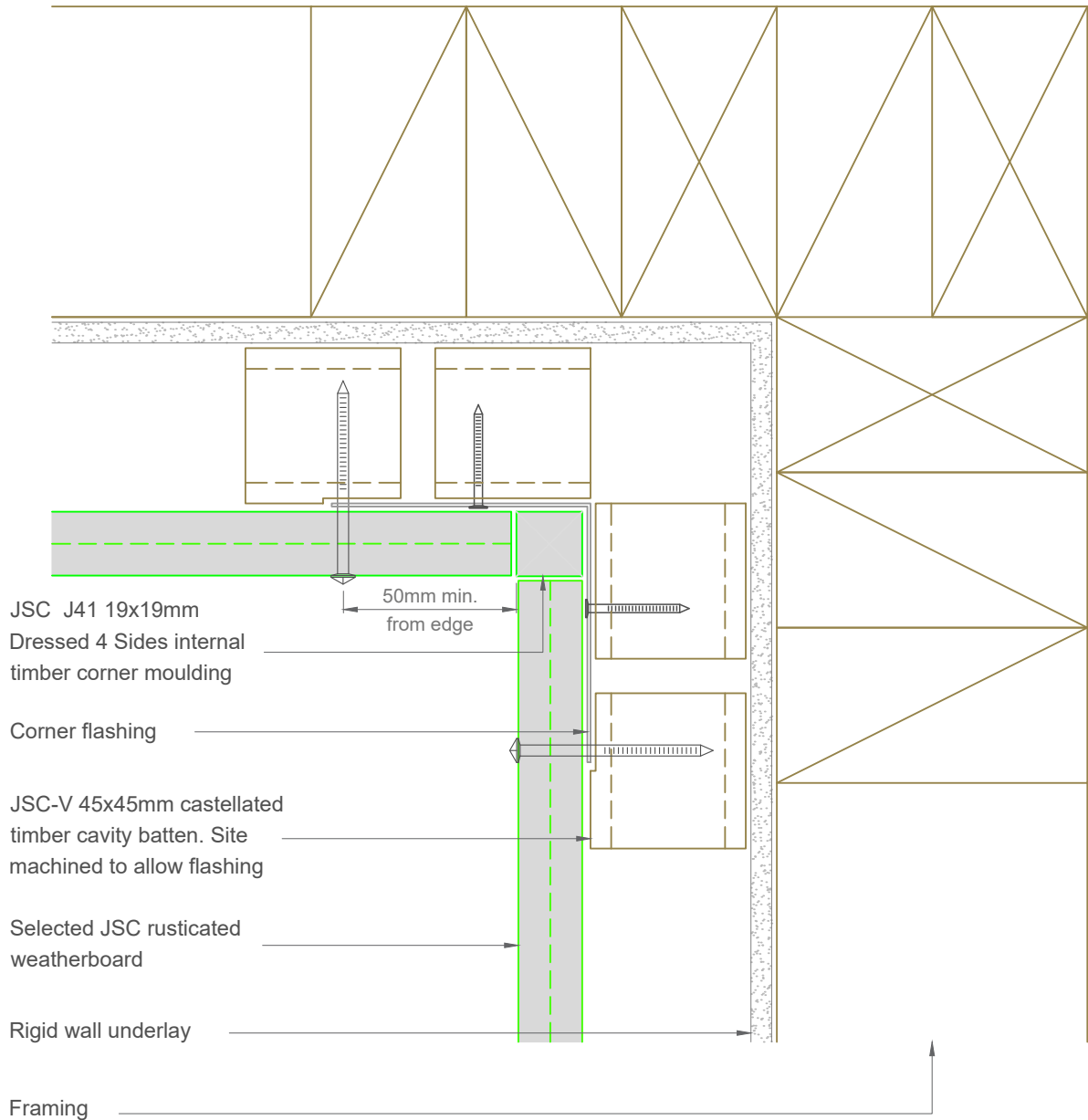
Scale: 1:2
Date: 24/02/2025

Email: TechHelp@jsctimber.co.nz

Web: www.jsctimber.co.nz

Auckland
20 Sawmill Road
Riverhead
☎ 09 412 2800

Christchurch
23 William Lewis Drive
Sockburn
☎ 03 348 9726



Note: To be read in conjunction with complete JSC installation instructions • Details may be subject to change without notification

Internal Corner Detail - Rigid Underlay

JR-R45-11

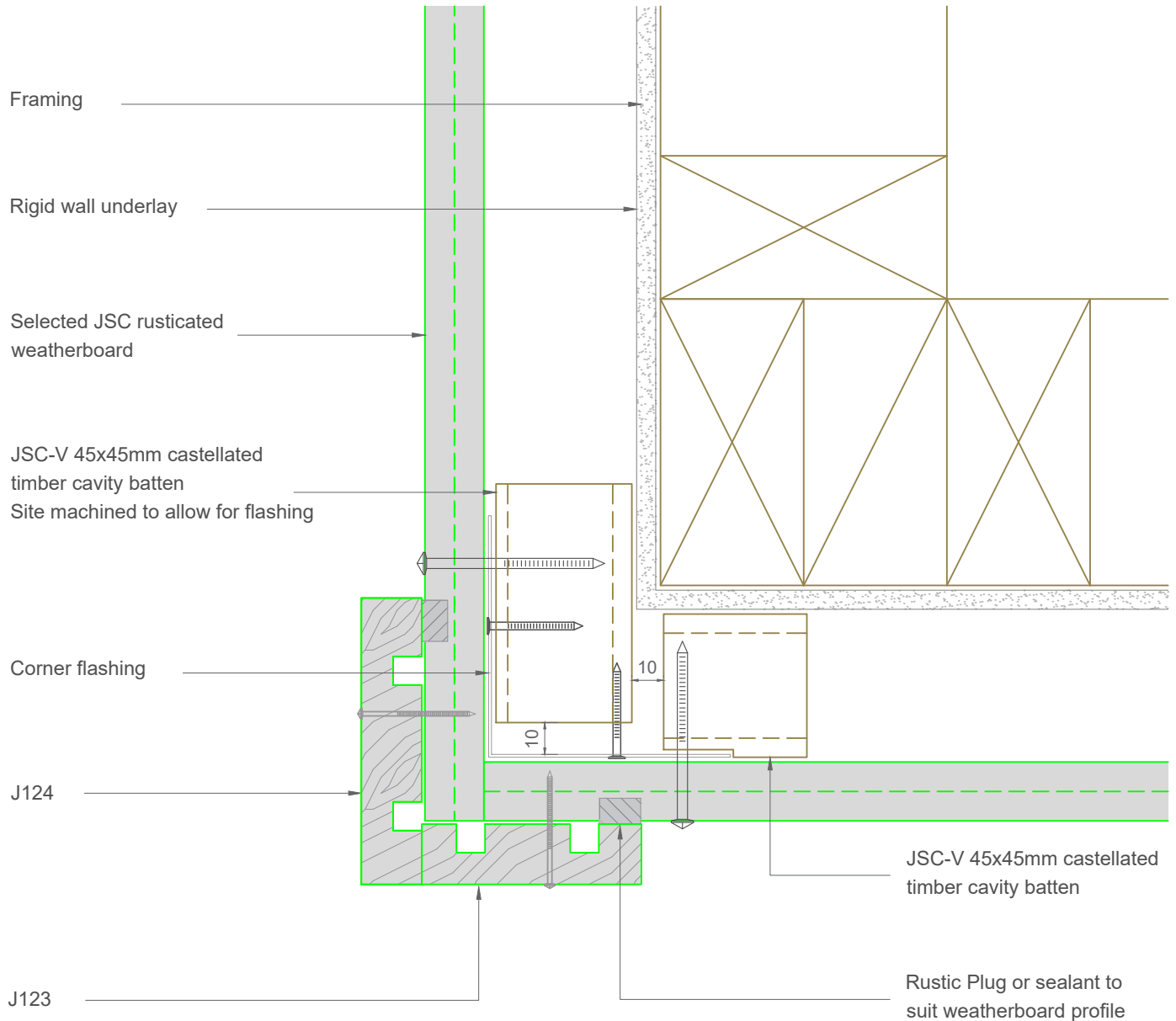
Scale: 1:2
Date: 24/02/2025

Email: TechHelp@jsctimber.co.nz

Web: www.jsctimber.co.nz

Auckland
20 Sawmill Road
Riverhead
☎ 09 412 2800

Christchurch
23 William Lewis Drive
Sockburn
☎ 03 348 9726



Note: To be read in conjunction with complete JSC installation instructions • Details may be subject to change without notification

External Corner Detail - Rigid Underlay

JR-R45-12

Scale: 1:2
Date: 24/02/2025

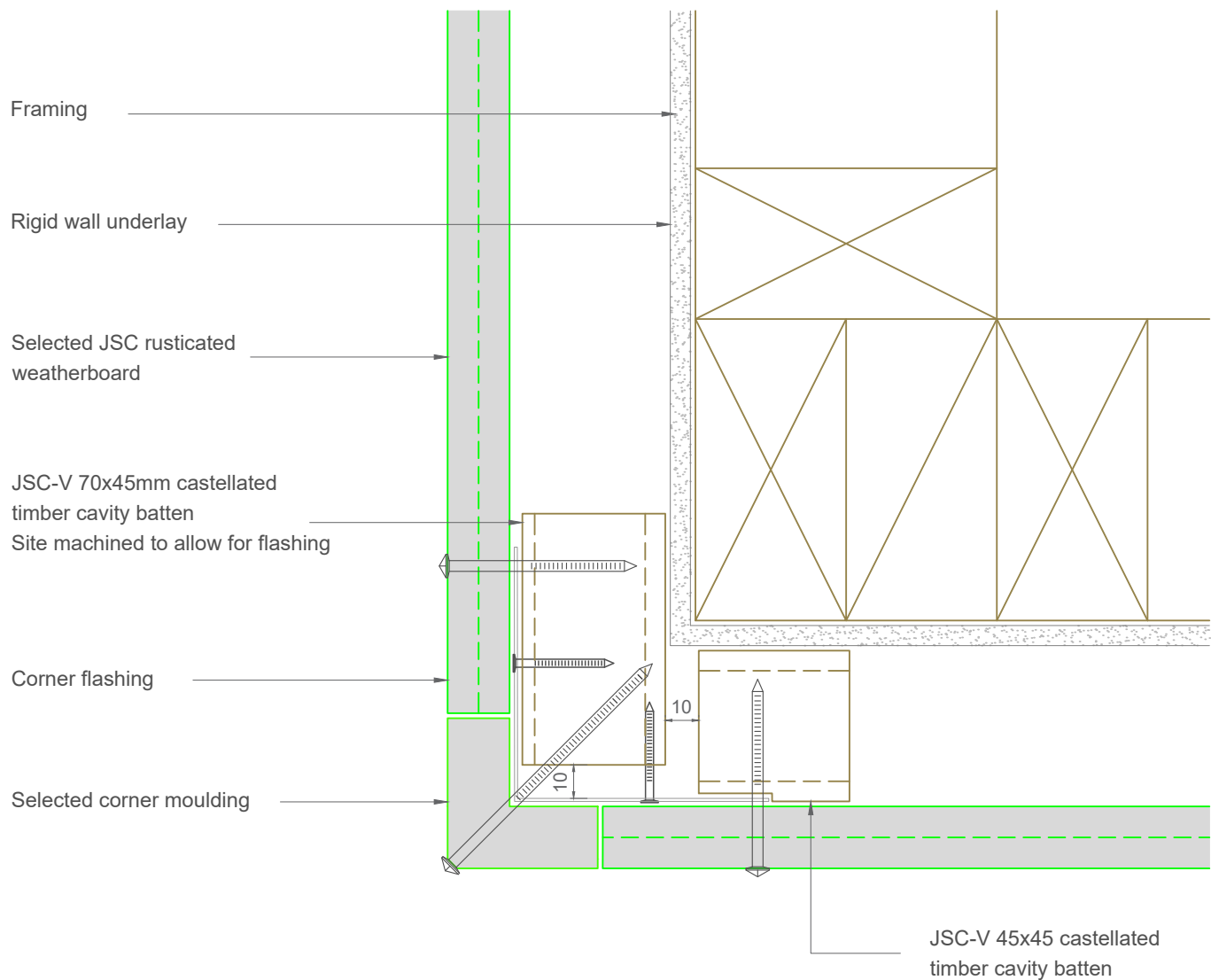
Email: TechHelp@jsctimber.co.nz

Web: www.jsctimber.co.nz

Auckland
20 Sawmill Road
Riverhead
☎ 09 412 2800

Christchurch
23 William Lewis Drive
Sockburn
☎ 03 348 9726

JSC PREMIUM ARCHITECTURAL
& BUILDING SOLUTIONS



Note: To be read in conjunction with complete JSC installation instructions • Details may be subject to change without notification

External Corner Detail - Rigid Underlay

JR-R45-13

Scale: 1:2
Date: 24/02/2025

Email: TechHelp@jsctimber.co.nz

Web: www.jsctimber.co.nz

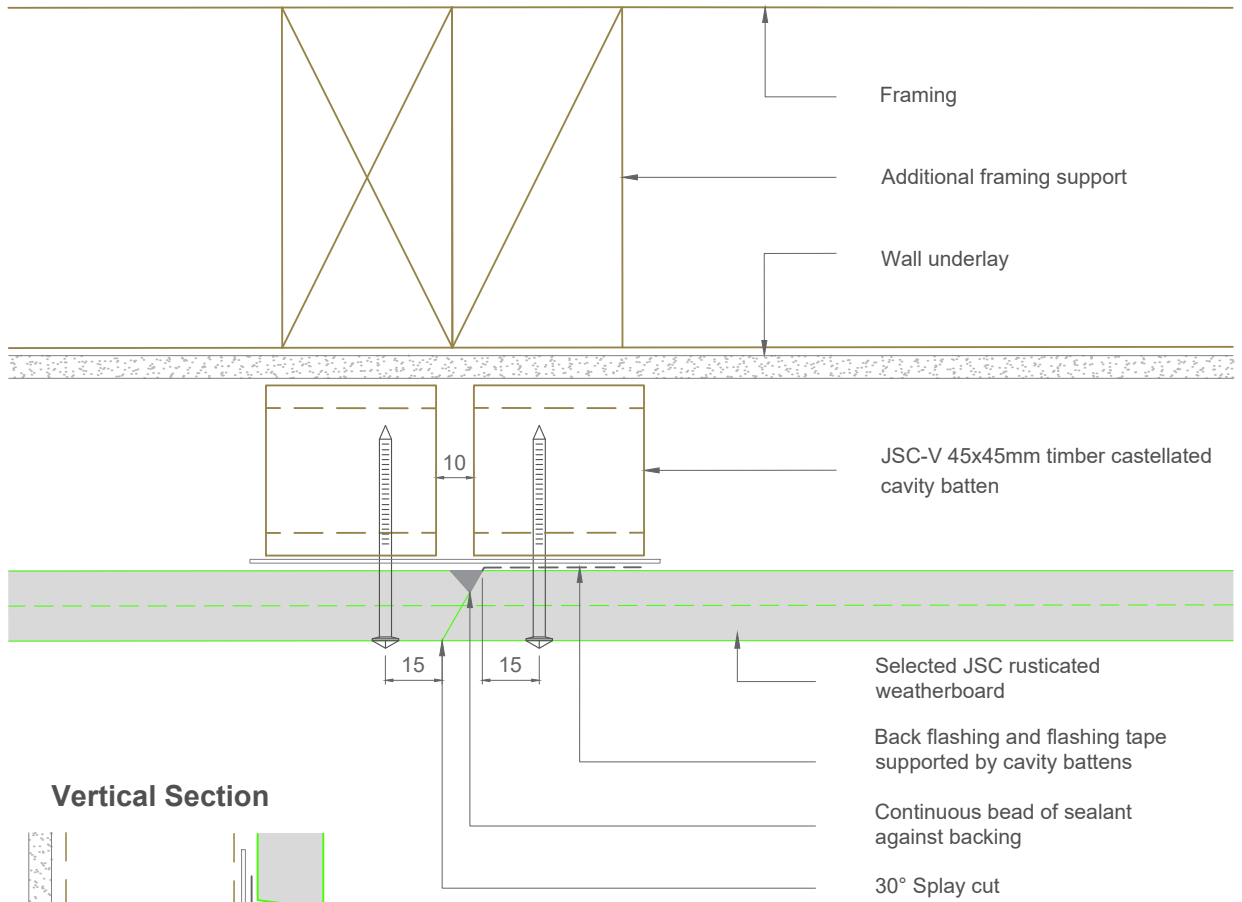
Auckland
20 Sawmill Road
Riverhead
☎ 09 412 2800

Christchurch
23 William Lewis Drive
Sockburn
☎ 03 348 9726

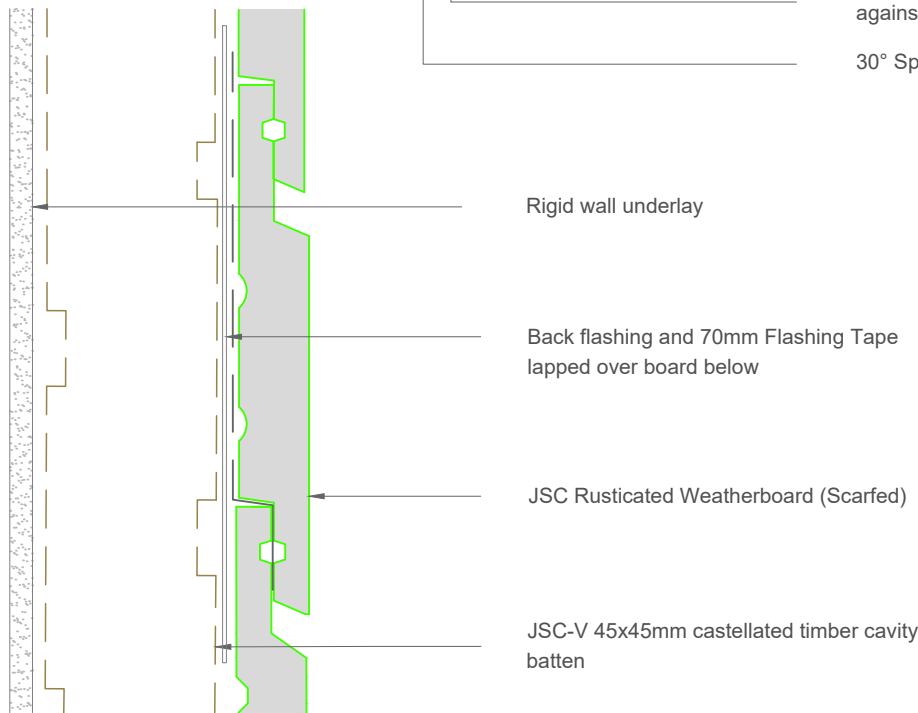
JSC PREMIUM ARCHITECTURAL
& BUILDING SOLUTIONS

Horizontal Plan

CodeMark CMNZ30081



Vertical Section



Note: To be read in conjunction with complete JSC installation instructions • Details may be subject to change without notification

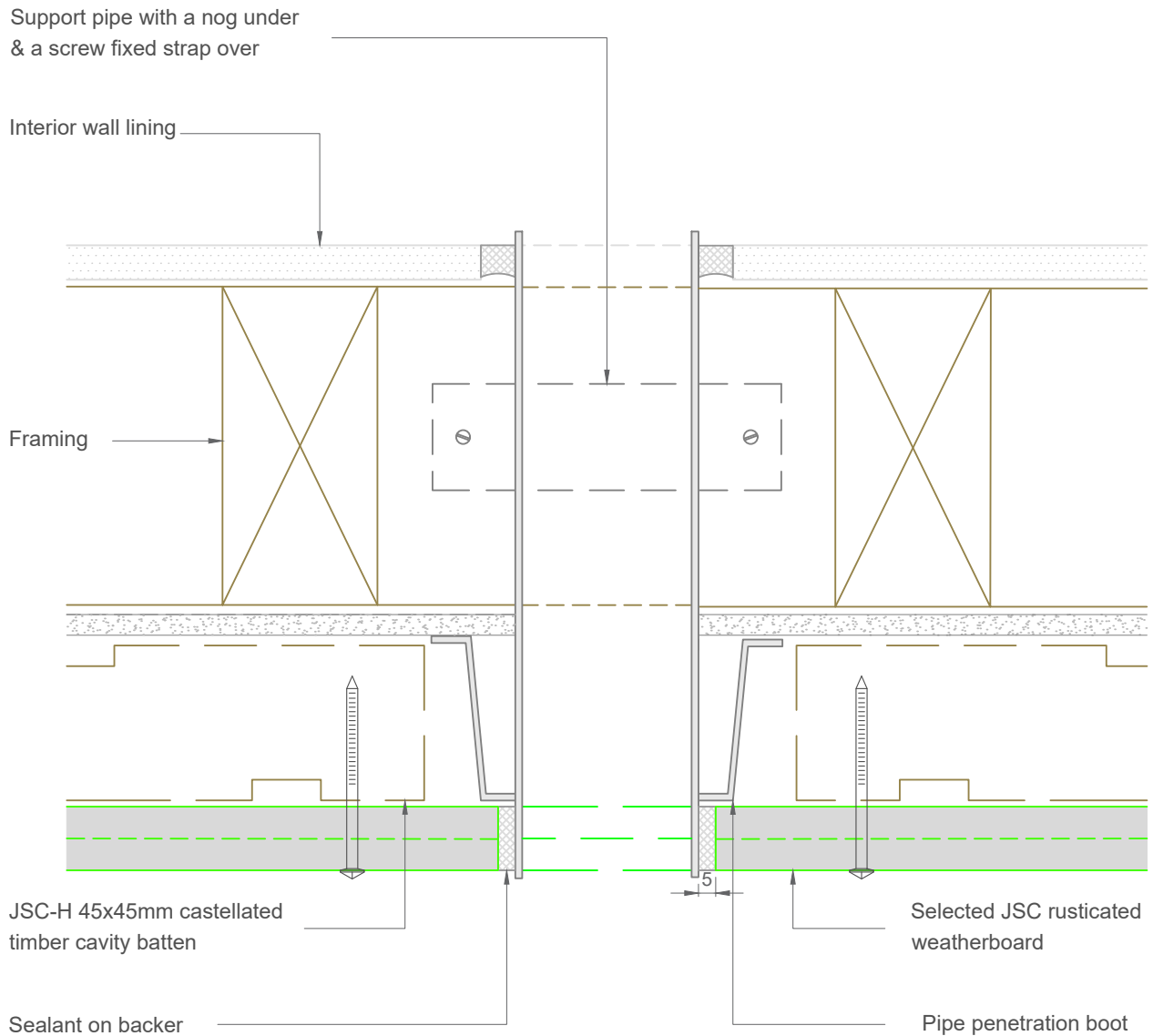
Scarf Joint Detail - Rigid Underlay	JR-R45-20	Scale: 1:2 Date: 24/02/2025
--	------------------	--

Email: TechHelp@jsctimber.co.nz
Web: www.jsctimber.co.nz

Auckland
20 Sawmill Road
Riverhead
☎ 09 412 2800

Christchurch
23 William Lewis Drive
Sockburn
☎ 03 348 9726





Note: To be read in conjunction with complete JSC installation instructions • Details may be subject to change without notification

Pipe Penetration Detail - Rigid Underlay

JR-R45-21

Scale: 1:2
Date: 24/02/2025

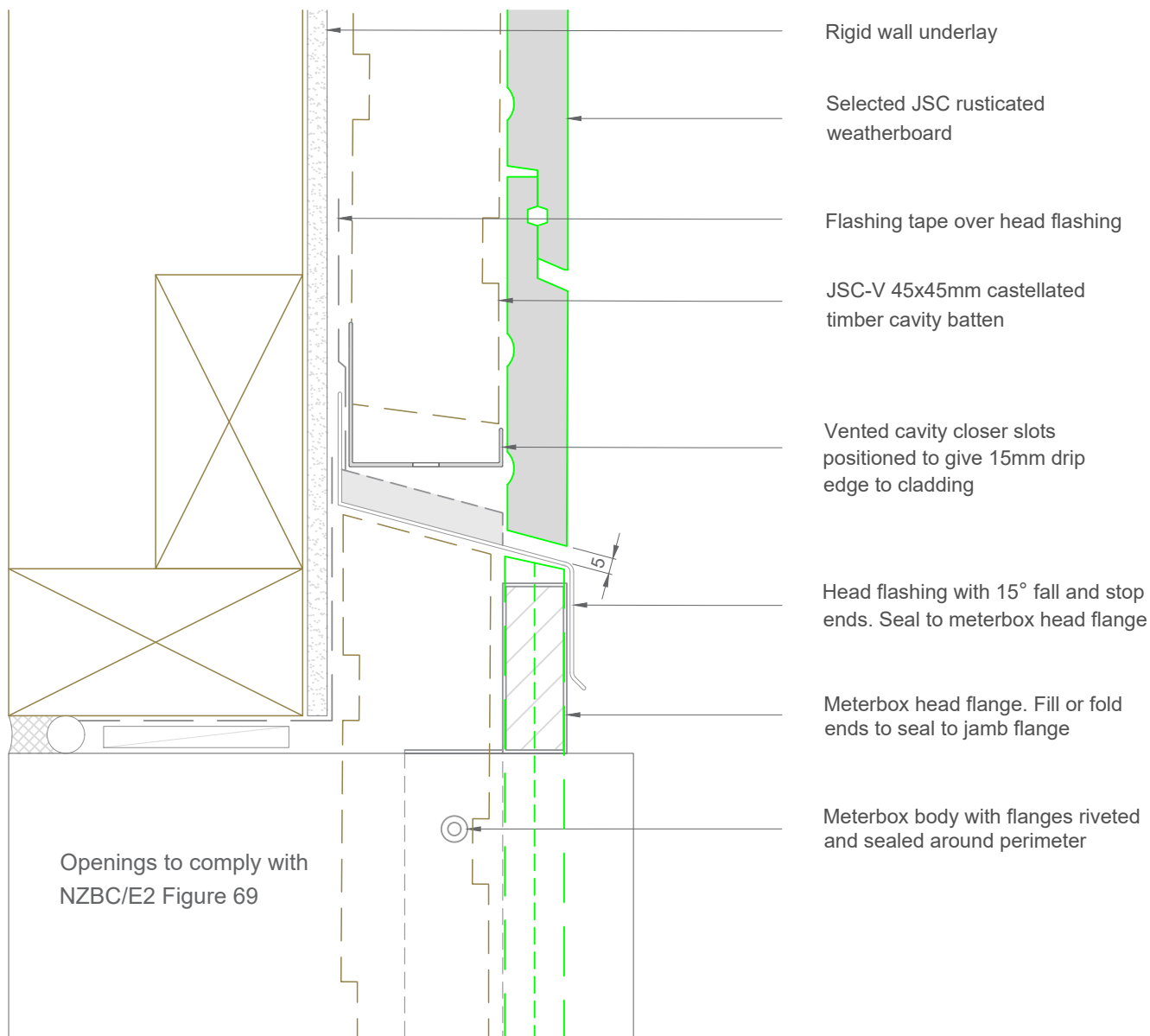
Email: TechHelp@jsctimber.co.nz

Web: www.jsctimber.co.nz

Auckland
20 Sawmill Road
Riverhead
☎ 09 412 2800

Christchurch
23 William Lewis Drive
Sockburn
☎ 03 348 9726

JSC PREMIUM ARCHITECTURAL
& BUILDING SOLUTIONS



Note: To be read in conjunction with complete JSC installation instructions • Details may be subject to change without notification

Meterbox Head Detail - Rigid Underlay

JR-R45-25

Scale: 1:2

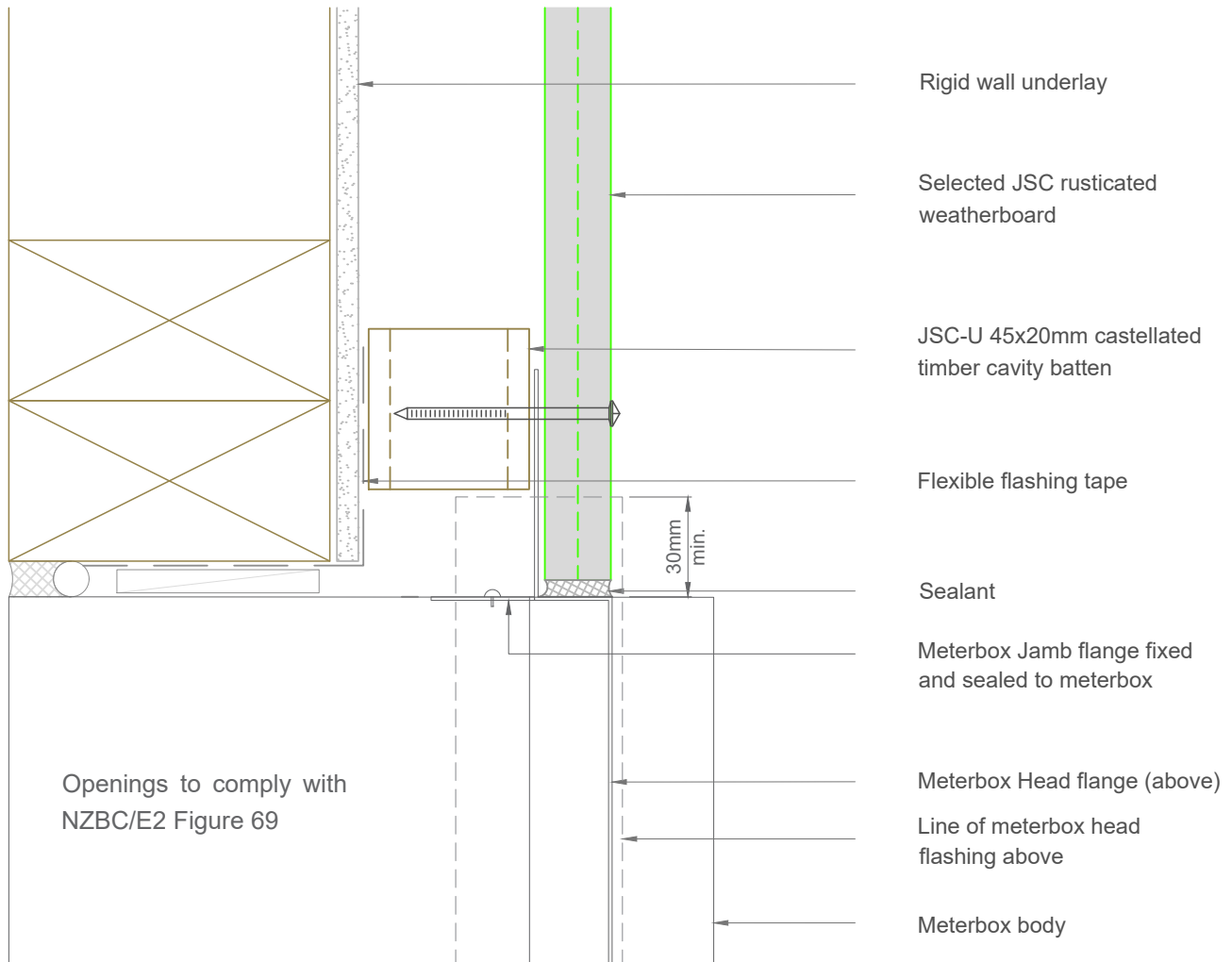
Date: 24/02/2025

Email: TechHelp@jsctimber.co.nz

Web: www.jsctimber.co.nz

Auckland
20 Sawmill Road
Riverhead
☎ 09 412 2800

Christchurch
23 William Lewis Drive
Sockburn
☎ 03 348 9726



Note: To be read in conjunction with complete JSC installation instructions • Details may be subject to change without notification

Meterbox Jamb Detail - Rigid Underlay

JR-R45-26

Scale: 1:2
Date: 24/02/2025

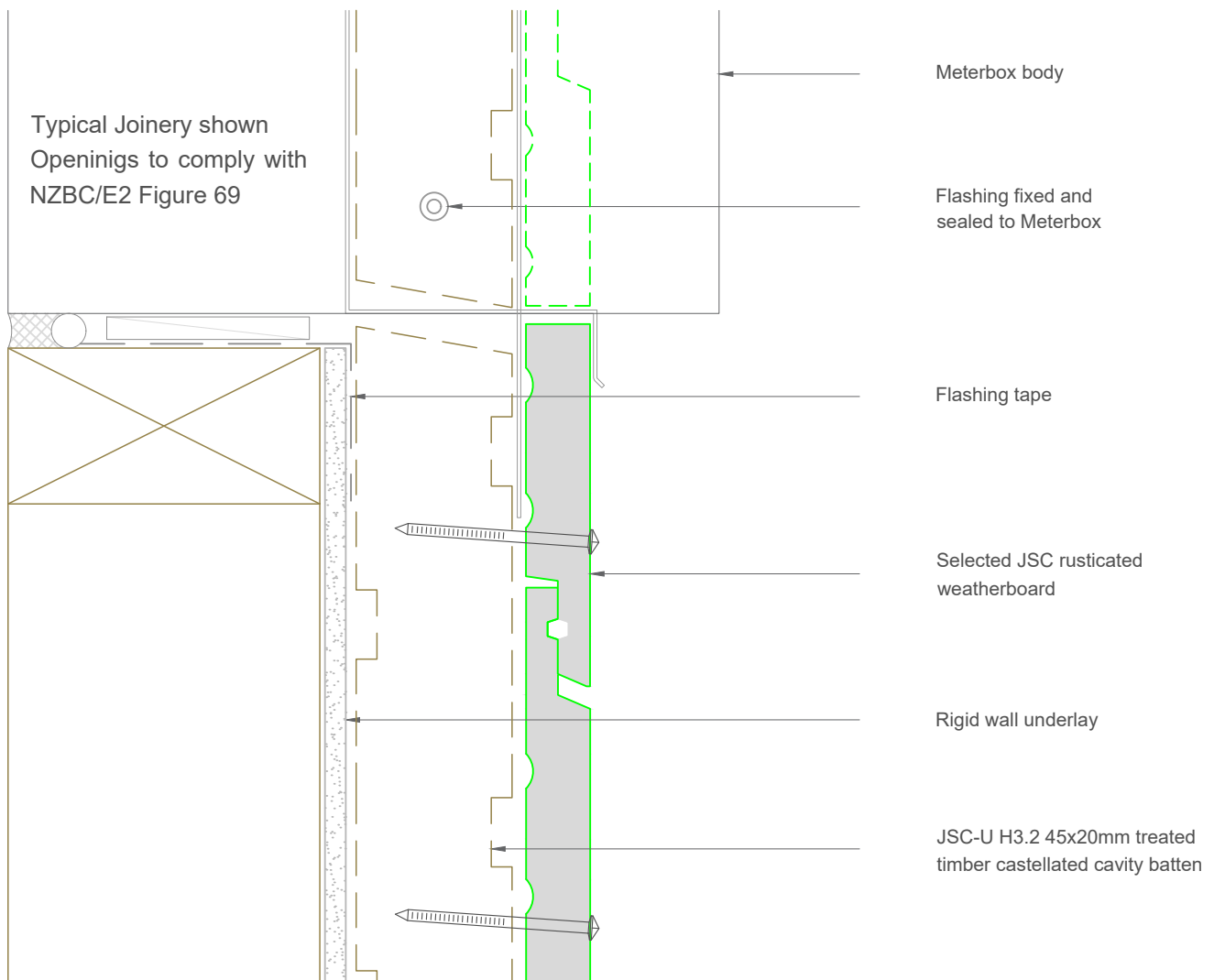
Email: TechHelp@jsttimber.co.nz

Web: www.jsttimber.co.nz

Auckland
20 Sawmill Road
Riverhead
☎ 09 412 2800

Christchurch
23 William Lewis Drive
Sockburn
☎ 03 348 9726

JSC PREMIUM ARCHITECTURAL
& BUILDING SOLUTIONS



Note: To be read in conjunction with complete JSC installation instructions • Details may be subject to change without notification

Meterbox Sill Detail - Rigid Underlay

JR-R45-27

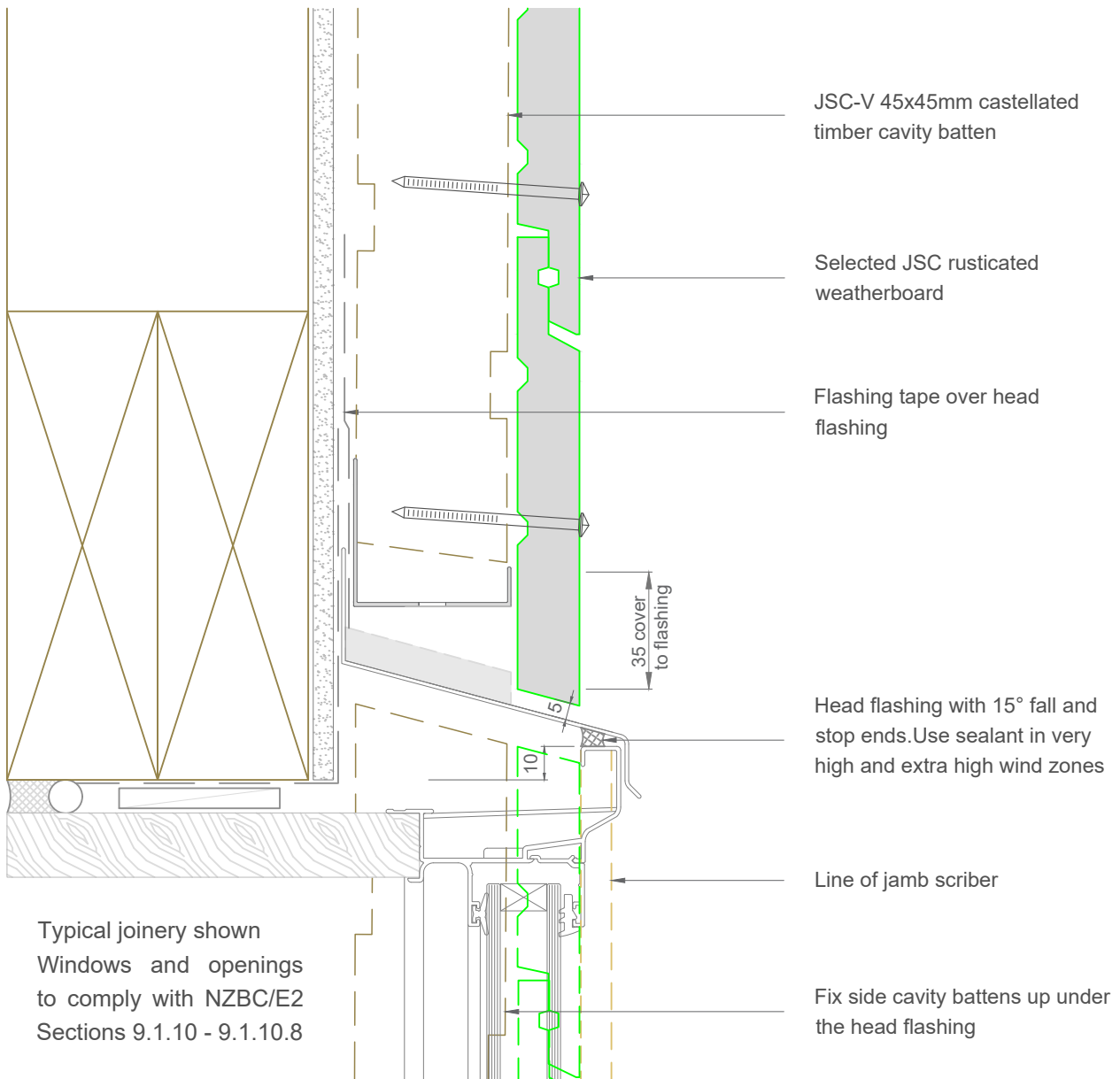
Scale: 1:2
Date: 24/02/2025

Email: TechHelp@jsttimber.co.nz

Web: www.jsttimber.co.nz

Auckland
20 Sawmill Road
Riverhead
☎ 09 412 2800

Christchurch
23 William Lewis Drive
Sockburn
☎ 03 348 9726



Note: To be read in conjunction with complete JSC installation instructions • Details may be subject to change without notification

Window Head Detail

JR-R45-30

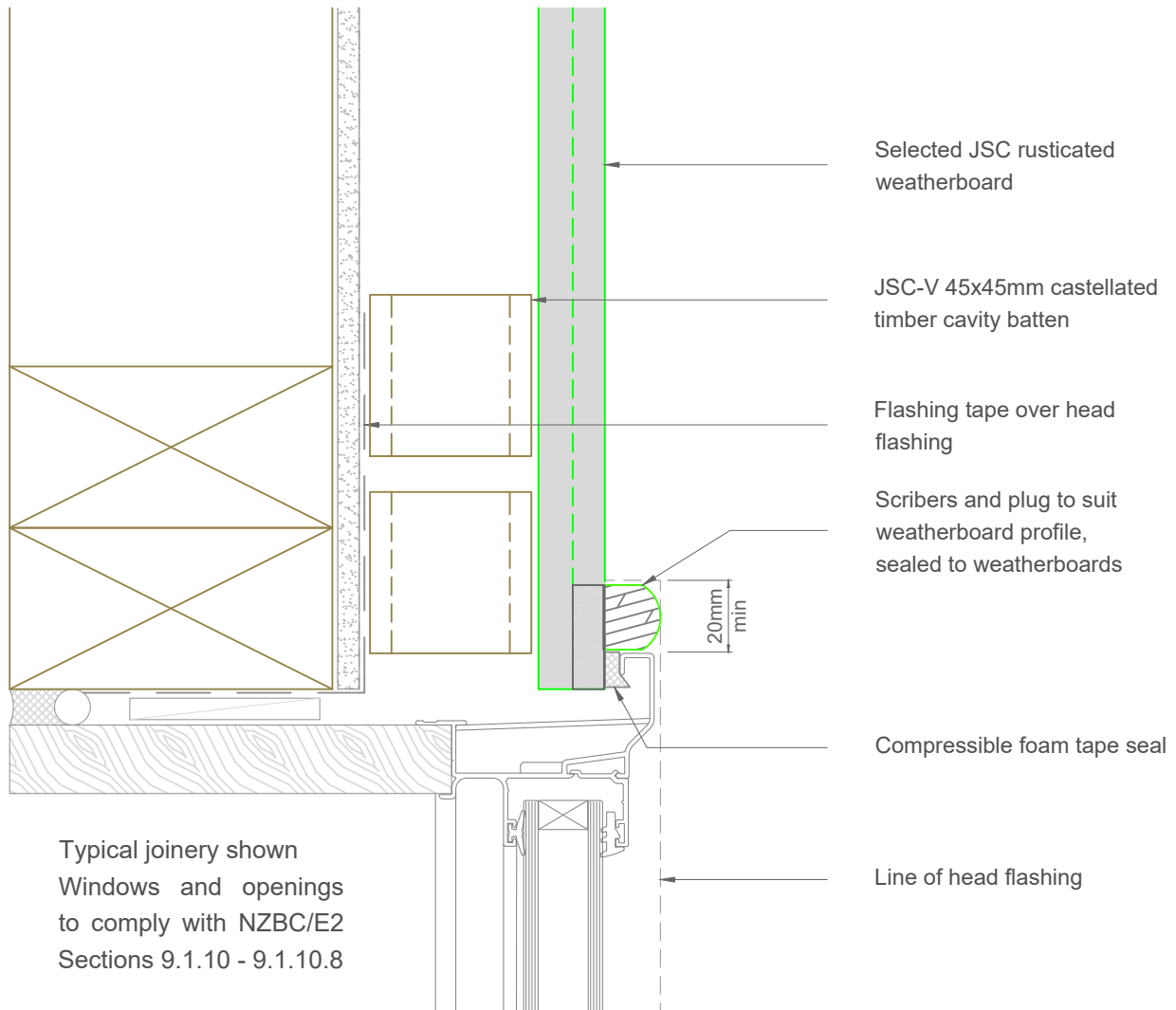
Scale: 1:2
Date: 24/02/2025

Email: TechHelp@jsctimber.co.nz

Web: www.jsctimber.co.nz

Auckland
20 Sawmill Road
Riverhead
☎ 09 412 2800

Christchurch
23 William Lewis Drive
Sockburn
☎ 03 348 9726



Note:- Rustic plug might not be available for some weatherboard profiles
In such cases use compatible sealant against suitable backer

Note: To be read in conjunction with complete JSC installation instructions • Details may be subject to change without notification

Window Jamb Detail - Rigid Underlay

JR-R45-31

Scale: 1:2
Date: 24/02/2025

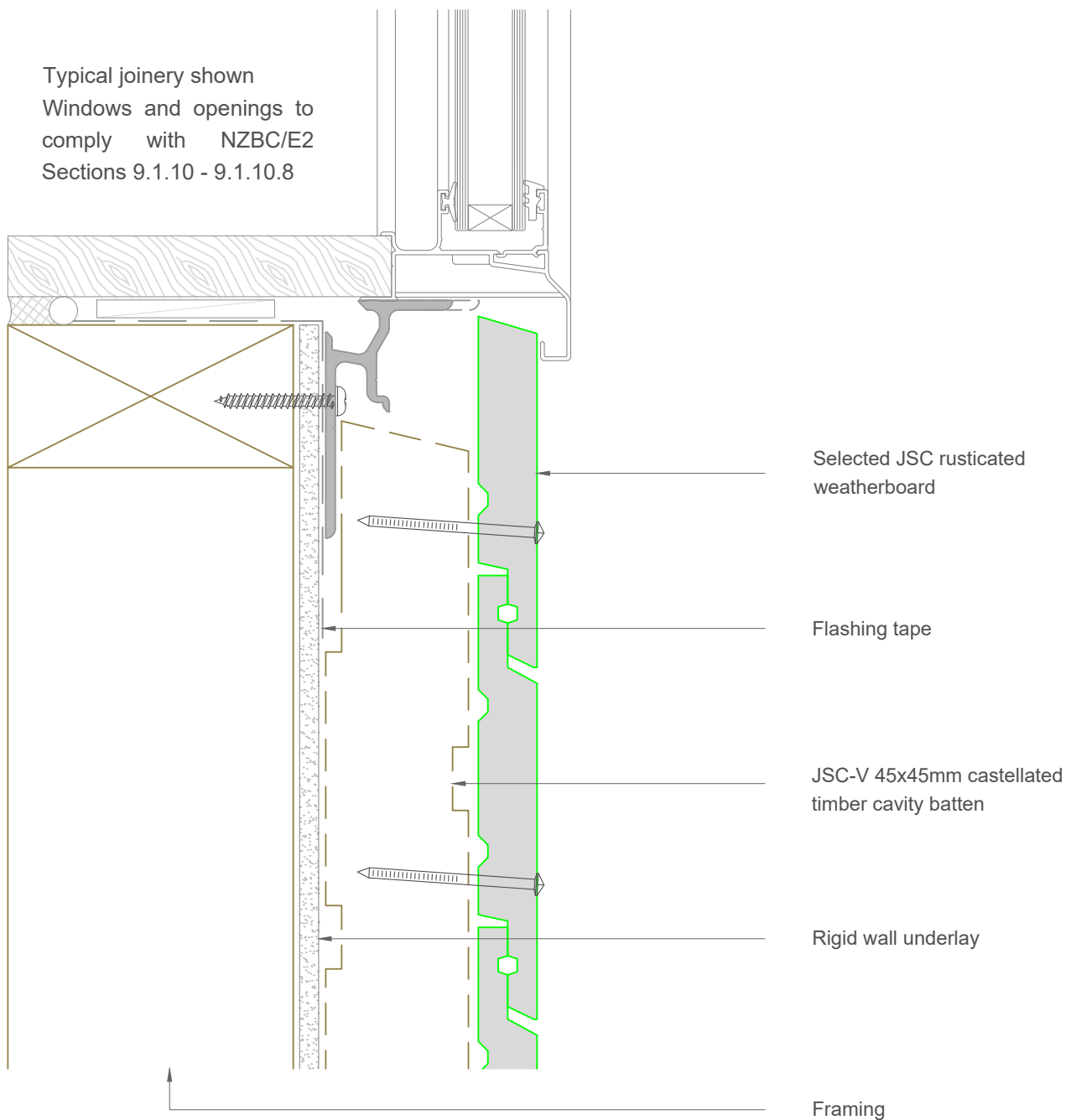
Email: TechHelp@jsctimber.co.nz

Web: www.jsctimber.co.nz

Auckland
20 Sawmill Road
Riverhead
☎ 09 412 2800

Christchurch
23 William Lewis Drive
Sockburn
☎ 03 348 9726

Typical joinery shown
Windows and openings to
comply with NZBC/E2
Sections 9.1.10 - 9.1.10.8



Note: To be read in conjunction with complete JSC installation instructions • Details may be subject to change without notification

Window Sill Detail - Rigid Underlay

JR-R45-33

Scale: 1:2

Date: 24/02/2025

Email: TechHelp@jsctimber.co.nz

Web: www.jsctimber.co.nz

Auckland
20 Sawmill Road
Riverhead
☎ 09 412 2800

Christchurch
23 William Lewis Drive
Sockburn
☎ 03 348 9726