

SCREW FIXING JSC CLADDING

INSTALLATION

- JSC weatherboards must be pre-drilled with a slight ($2^{\circ}+$) upward slope, smaller than the screw shank to reduce the risk of moisture entry.
- Test the torque of your drill/driver before installation. Do not overdrill the screws, as this may cause the timber to split.
- As per [E2/AS1 Table 24](#), single fix each weatherboard at 30 - 35 mm from the overlapping edge. Refer to JSC Cladding System [Specification and Installation Guides](#) for detailed weatherboard fixing instructions.
- Follow all installation processes as specified in the JSC Cladding System [Specification and Installation Guides](#).

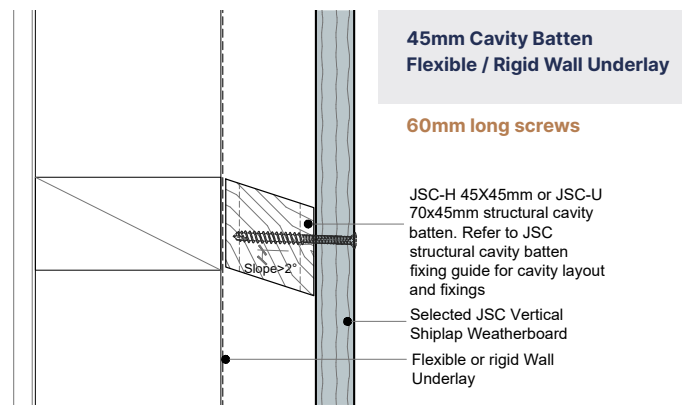
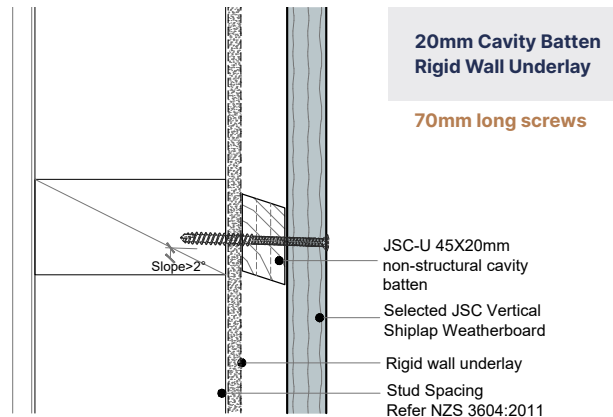
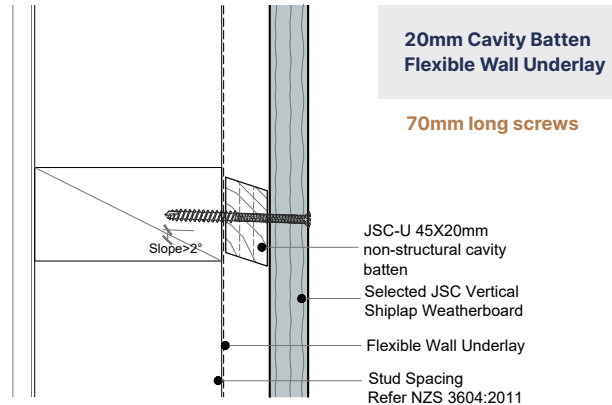
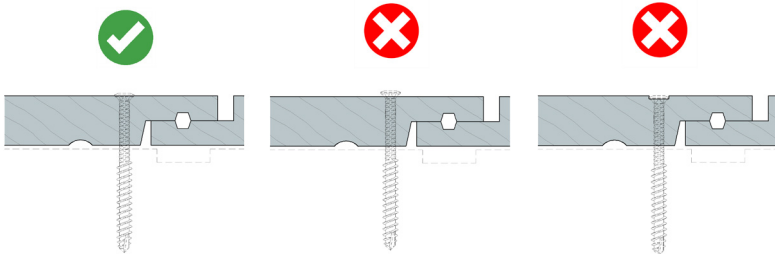
SUGGESTED SCREW

- WURTH ASSY plus 4 A2 SRCS terrace 316 Stainless Steel**

More information: www.wurth.co.nz

For pre-drilling hole size, please refer to Table A.1.1 of Wurth's [Technical Assessment](#).

We strongly recommend the use of our suggested screw, alternative screws will not be permitted.



Cross Section

NOTES

- Screw fixing is not within the scope of JSC CodeMark certification.
- Ensure the wall underlay is compatible with screw fixing. Verify with the manufacturer for confirmation.
- Details may be subject to change without notice.
- To be read in conjunction with complete JSC Cladding System literature. Visit www.jsc.co.nz