

CodeMark
CERTIFIED

TECHNICAL DRAWINGS

JSC VertiClad

Vertical Shiplap Weatherboard Cladding

20mm Cavity on Rigid Underlay

Version 1.2 | 12/02/2024



PREMIUM ARCHITECTURAL
& BUILDING SOLUTIONS

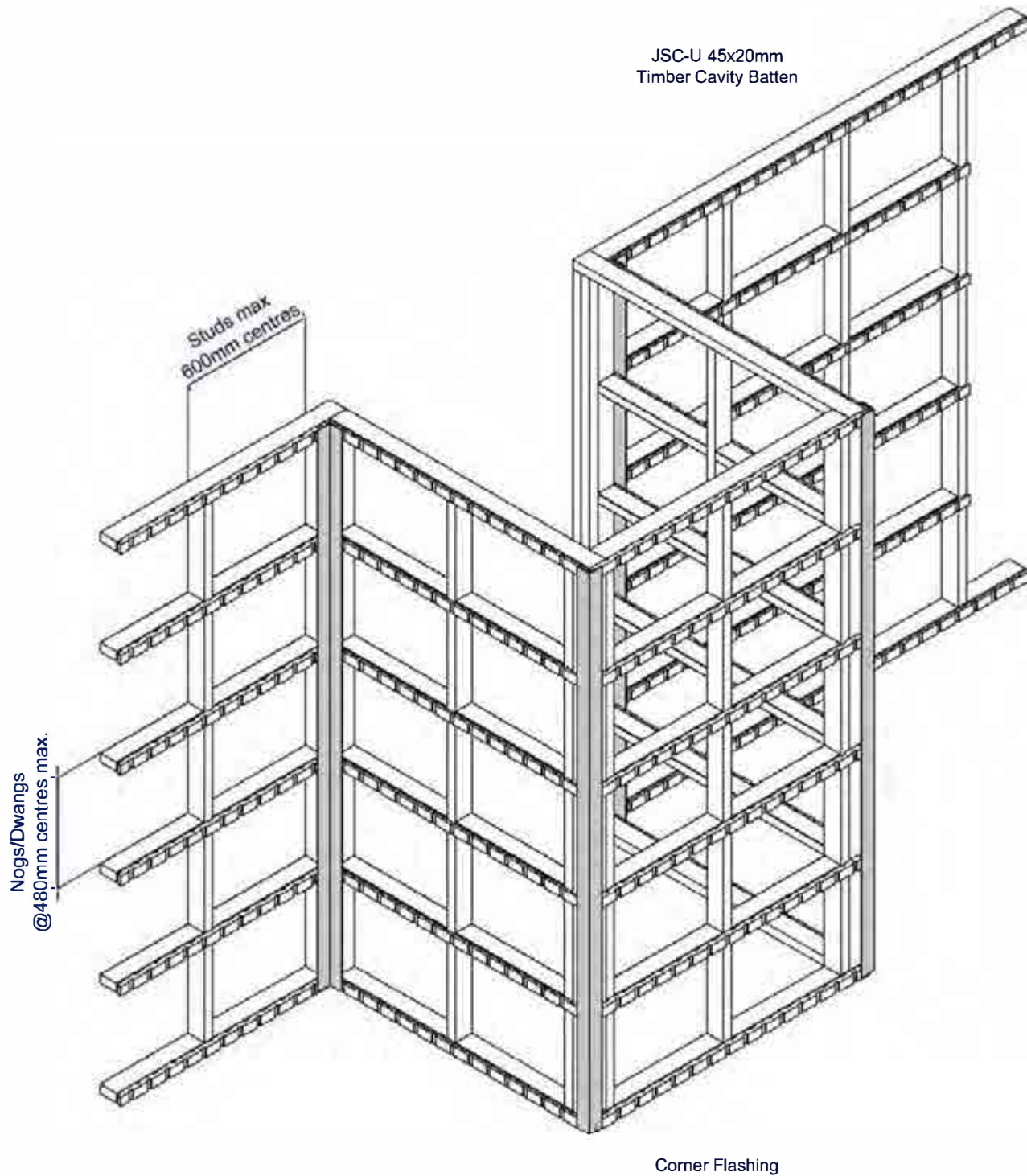
Index

20mm Cavity Setout Guide Fixed Horizontally

JV-R20-SEC01	Sectional Detail – Plan View
JV-R20-SEC02	Sectional Detail – Cross Section View
JV-R20-01	Bottom Plate Detail
JV-R20-01A	Bottom Plate on Timber Detail
JV-R20-02	Top Plate Soffit Detail
JV-R20-03	Raking Soffit Detail
JV-R20-04	Bottom Plate Soffit Detail
JV-R20-05	Inter Storey Junction Detail
JV-R20-06	Parapet Detail
JV-R20-07	Balustrade to Wall Junction Detail
JV-R20-10	Internal Corner Detail
JV-R20-11	Internal Corner Detail
JV-R20-12	External Corner Box Detail – J40W
JV-R20-13	External Corner Box Detail – J42
JV-R20-14	External Corner Box Detail – APJC5
JV-R20-21	Pipe Penetration Detail
JV-R20-25	Meterbox Head Detail
JV-R20-26	Meterbox Jamb Detail
JV-R20-27	Meterbox Sill Detail
JV-R20-30	Window Head Detail
JV-R20-31	Window Jamb Detail
JV-R20-32	Window Sill Detail

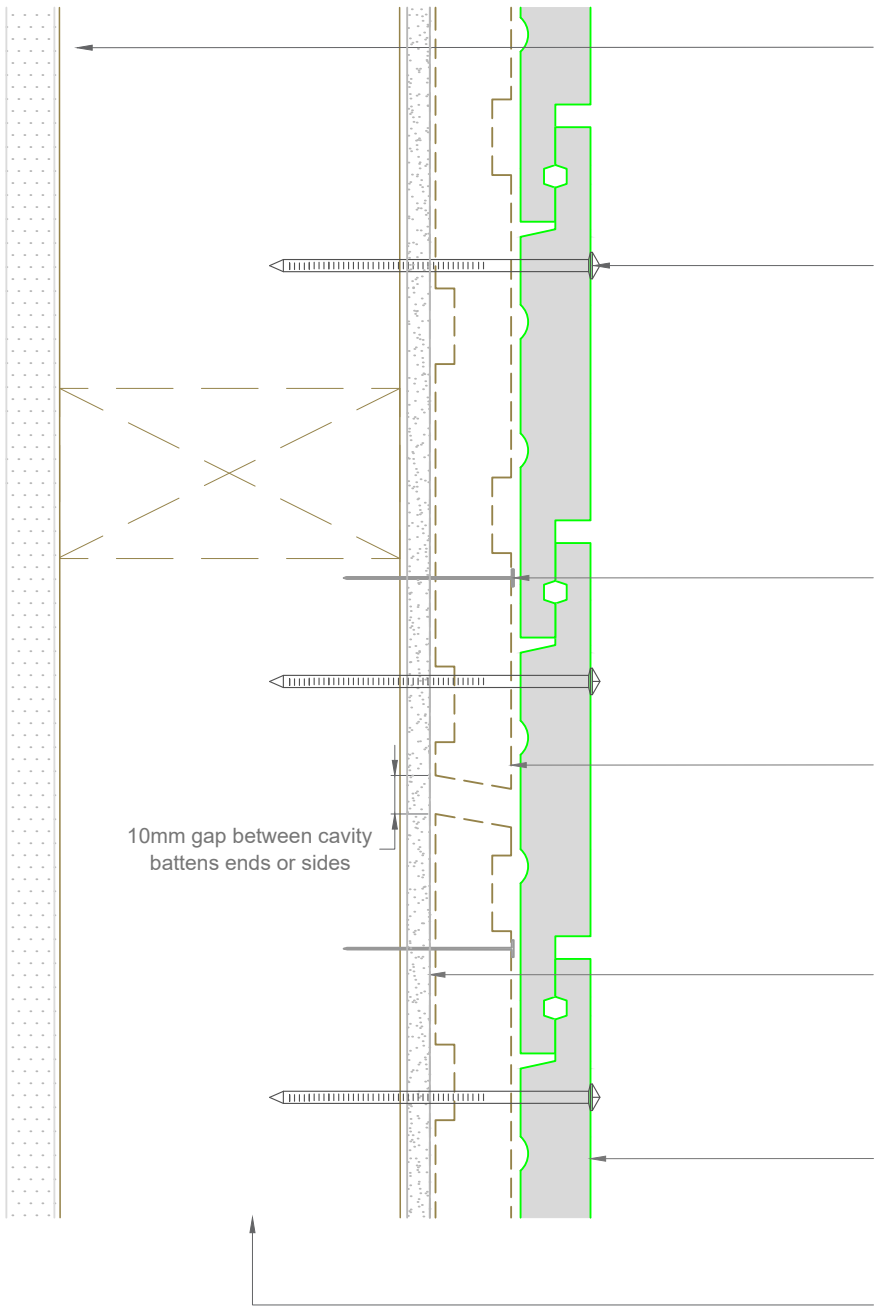


20mm Cavity Batten Setout fixed Horizontally



Note: This setout guide is for fixing JSC-U 45x20 mm Cavity Battens for Vertical weatherboard cladding

Plan View



Interior lining or use rigid air barrier for unlined walls such as gable ends. See NZBC/E2 paragraph 9.1.4

Single fix at each nog with annular grooved stainless steel or silicon bronze nails as per NZBC/E2 Table 24

- Pre-drilled 1mm diameter smaller than nail gauge
- Nailed with a 2° upward slope
- 30mm min penetration into framing
- Nailed 10mm away from the edge of the lower board (35-40 mm from the edge of the board)
- Minimum 50mm from ends of boards

40-50mm Stainless steel clout

JSC-U H3.2 45x20mm treated timber castellated cavity batten

- Tacked on with SS Clout or similar
- Cut ends to slope away from wall (10-15°)

Rigid wall underlay to comply with NZBC/E2 Table 23 installed to manufacturers specifications

Selected JSC vertical shiplap weatherboard

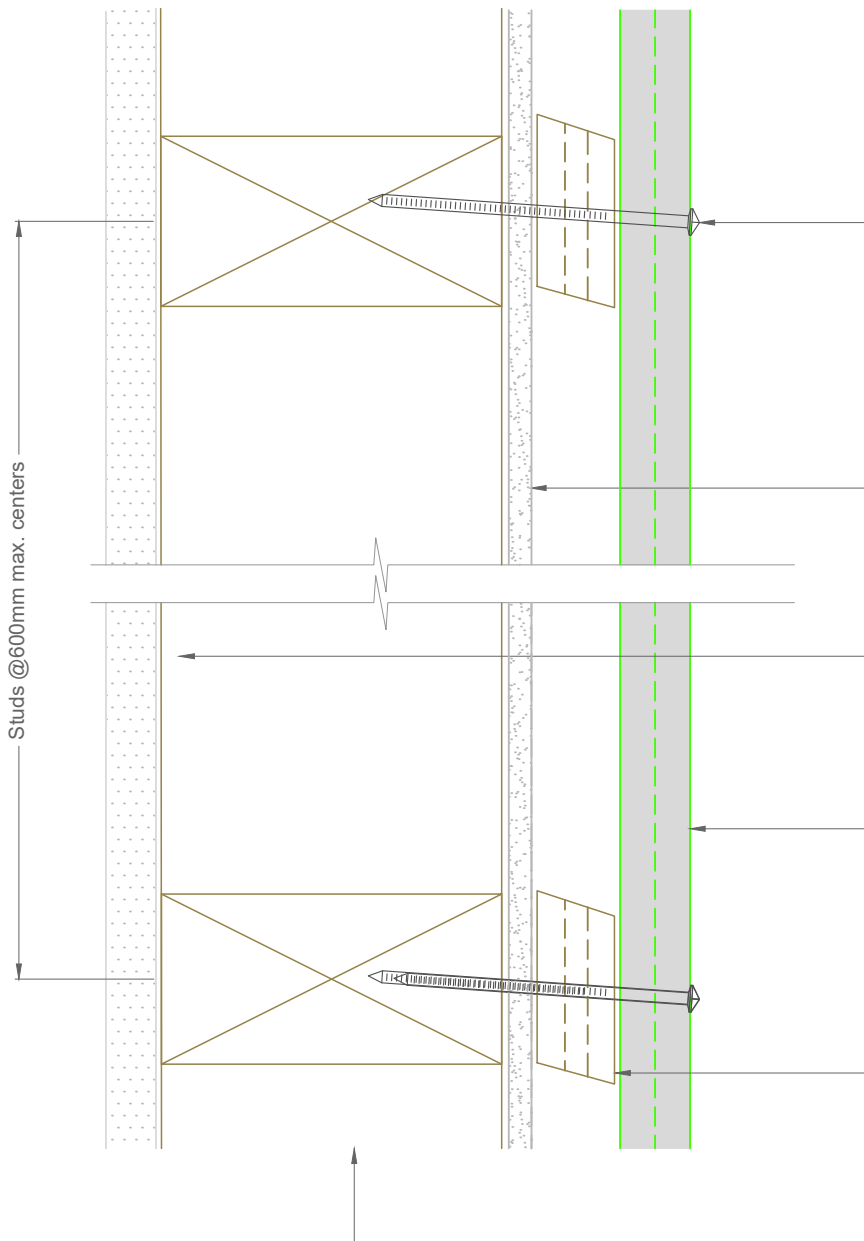
- Coated with approved suitable coating to all 4 sides and ends
- 2mm expansion gap at the under lap

Framing to NZS 3604 or "fit for purpose"

Note: To be read in conjunction with complete JSC installation instructions • Details may be subject to change without notification

Sectional Detail - Rigid Underlay		JV-R20-SEC01	Scale: 1:2 Date: 12/02/2024
Email: TechHelp@jsctimber.co.nz	Auckland 20 Sawmill Road Riverhead ☎ 09 412 2800	Christchurch 72 Hammersmith Drive Wigram ☎ 03 348 9726	 PREMIUM ARCHITECTURAL & BUILDING SOLUTIONS

Cross Section View



Single fix at each stud with annular grooved stainless steel or silicon bronze nails as per NZBC/E2 Table 24

- Pre-drilled 1mm diameter smaller than nail gauge
- Nailed with a 2° upward slope
- 30mm min penetration into framing
- Nailed 10mm above the top of the lower board
- Minimum 50mm from ends of boards

Rigid wall underlay to comply with NZBC/E2 Table 23 and Section 9.1.7.2 installed to manufacturers specifications

Interior lining or use rigid wall underlay for unlined walls such as gable ends.
See NZBC/E2 Paragraph 9.1.4

Selected JSC vertical shiplap weatherboard coated with approved coating to all 4 sides and ends

JSC-U H3.2 45x20mm treated timber castellated cavity batten

- Tacked on with SS Clout or similar
- Keep 10mm gap to the cavity battens except at bottom plate
- Cut ends to slope away from wall (10-15°)

Framing to NZS 3604 or "fit for purpose"

Note: To be read in conjunction with complete JSC installation instructions • Details may be subject to change without notification

Sectional Detail - Rigid Underlay

JV-R20-SEC02

Scale: 1:2
Date: 12/02/2024

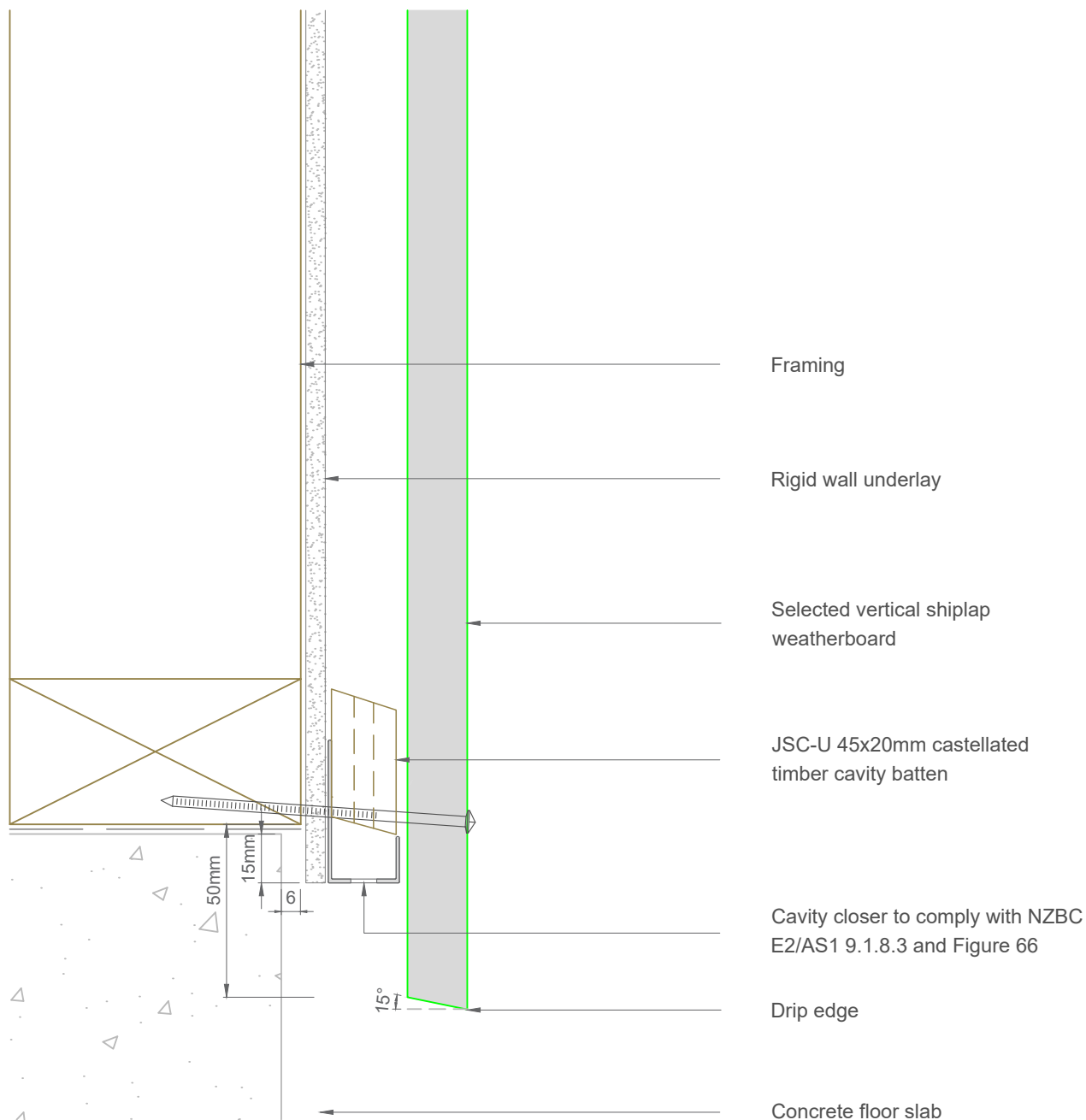
Email: TechHelp@jsttimber.co.nz

Web: www.jsttimber.co.nz

Auckland
20 Sawmill Road
Riverhead
☎ 09 412 2800

Christchurch
72 Hammersmith Drive
Wigram
☎ 03 348 9726





Note:- Maintain ground clearance as per NZBC/E2 paragraph 9.1.3.3 and Table 18

Note: To be read in conjunction with complete JSC installation instructions • Details may be subject to change without notification

Bottom Plate Detail - Rigid Underlay

JV-R20-01

Scale: 1:2

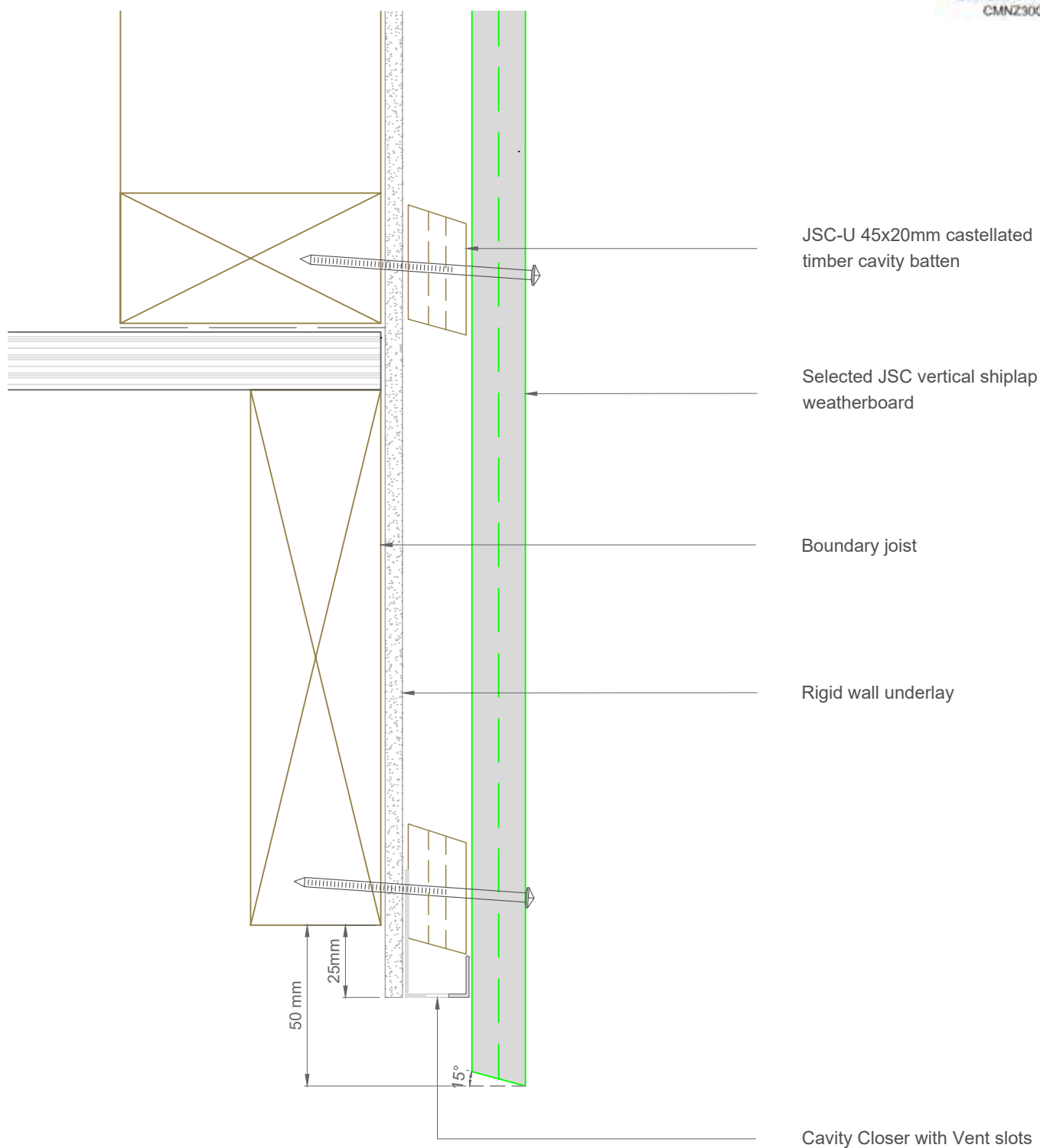
Date: 12/02/2024

Email: TechHelp@jsctimber.co.nz

Web: www.jsctimber.co.nz

Auckland
20 Sawmill Road
Riverhead
☎ 09 412 2800

Christchurch
72 Hammersmith Drive
Wigram
☎ 03 348 9726



Note:- Maintain ground clearance as per NZBC/E2 paragraph 9.1.3.3 and Table 18

Note: To be read in conjunction with complete JSC installation instructions • Details may be subject to change without notification

Bottom Plate on Timber Detail - Rigid Underlay

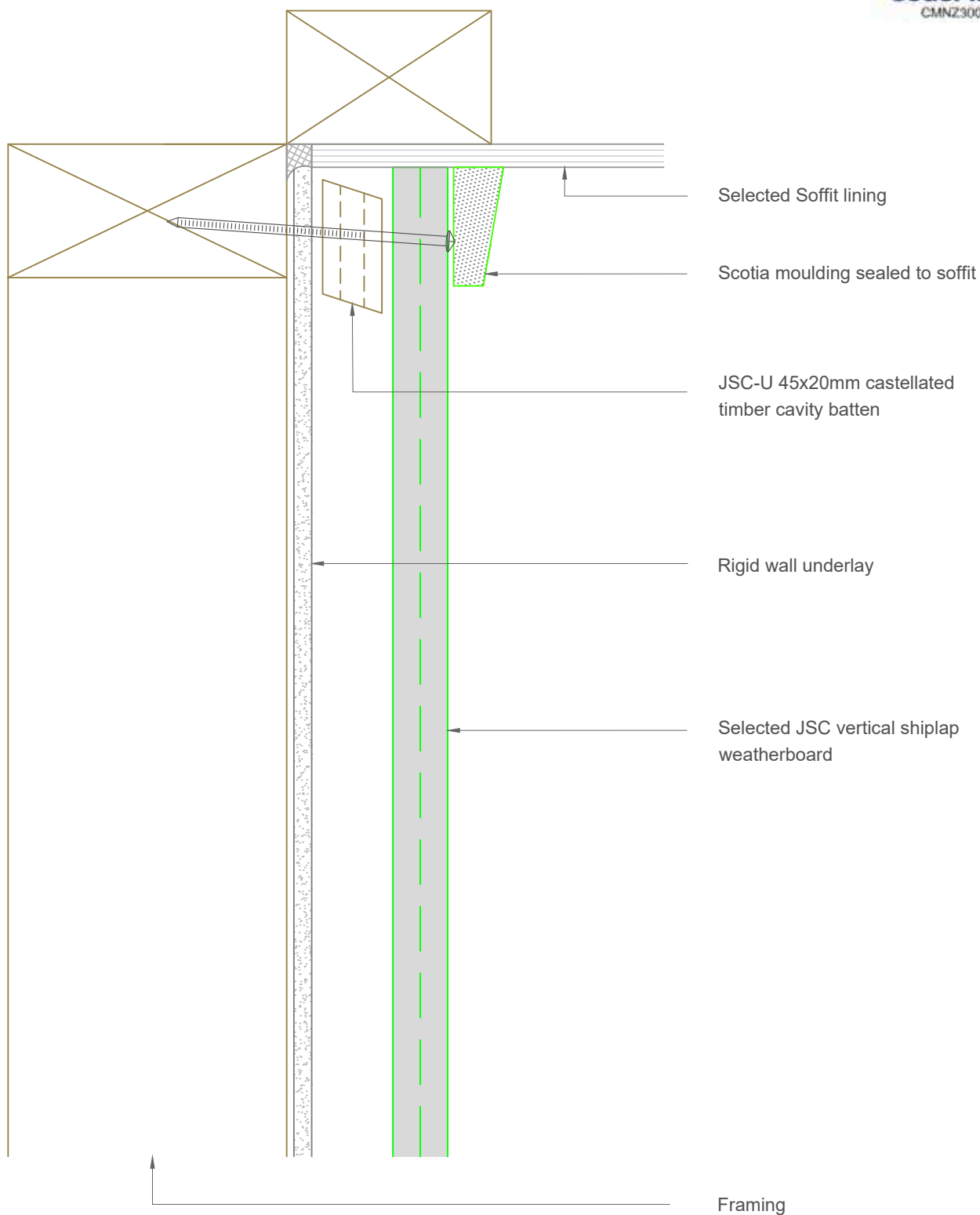
JV-R20-01A

Email: TechHelp@jsctimber.co.nz

Web: www.jsctimber.co.nz

Auckland
20 Sawmill Road
Riverhead
☎ 09 412 2800

Christchurch
72 Hammersmith Drive
Wigram
☎ 03 348 9726



Note: To be read in conjunction with complete JSC installation instructions • Details may be subject to change without notification

Top Plate Soffit Detail - Rigid Underlay

JV-R20-02

Scale: 1:2

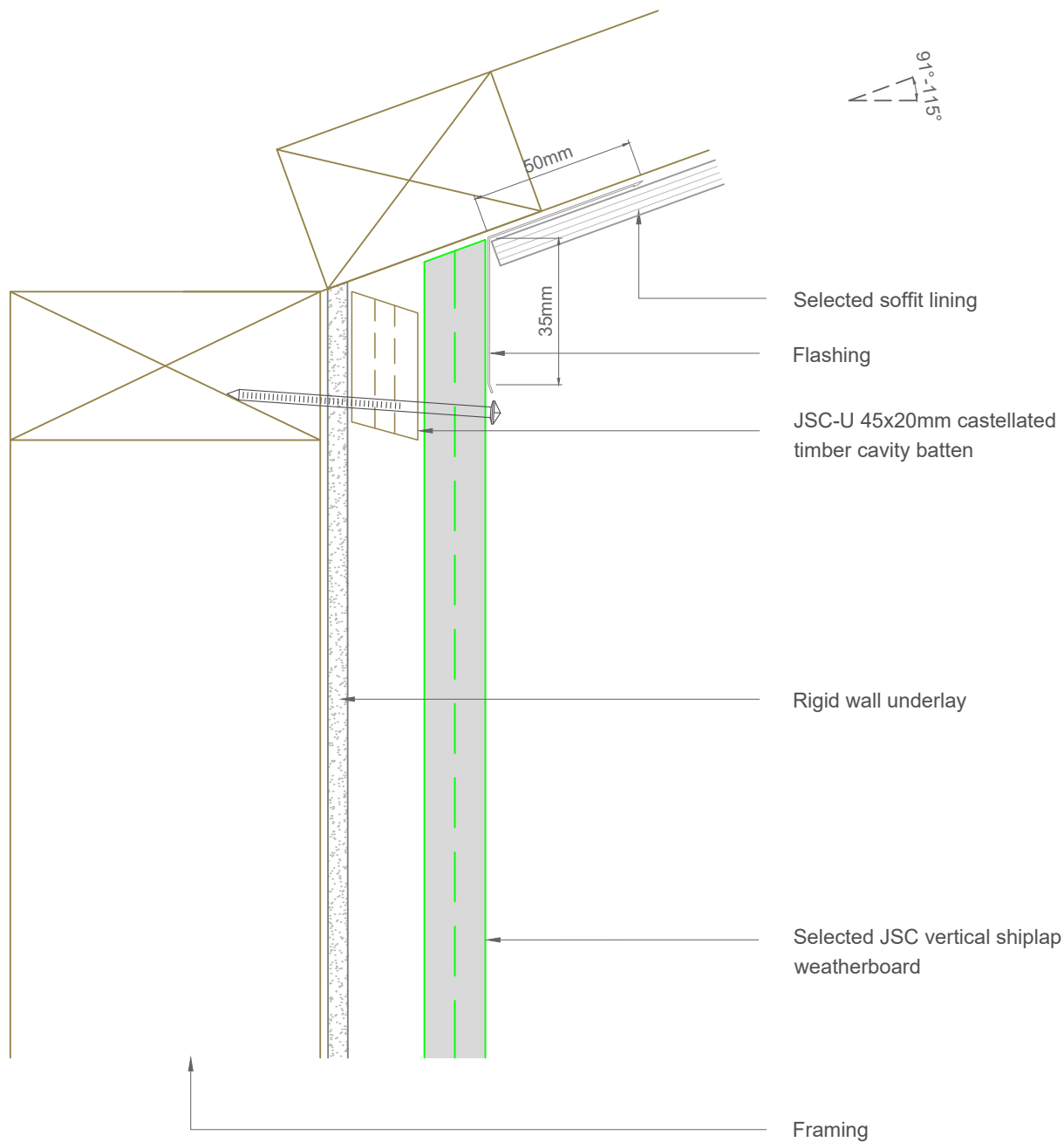
Date: 12/02/2024

Email: TechHelp@jsttimber.co.nz

Web: www.jsttimber.co.nz

Auckland
20 Sawmill Road
Riverhead
☎ 09 412 2800

Christchurch
72 Hammersmith Drive
Wigram
☎ 03 348 9726



Note: To be read in conjunction with complete JSC installation instructions • Details may be subject to change without notification

Raking Soffit Detail - Rigid Underlay

JV-R20-03

Scale: 1:2

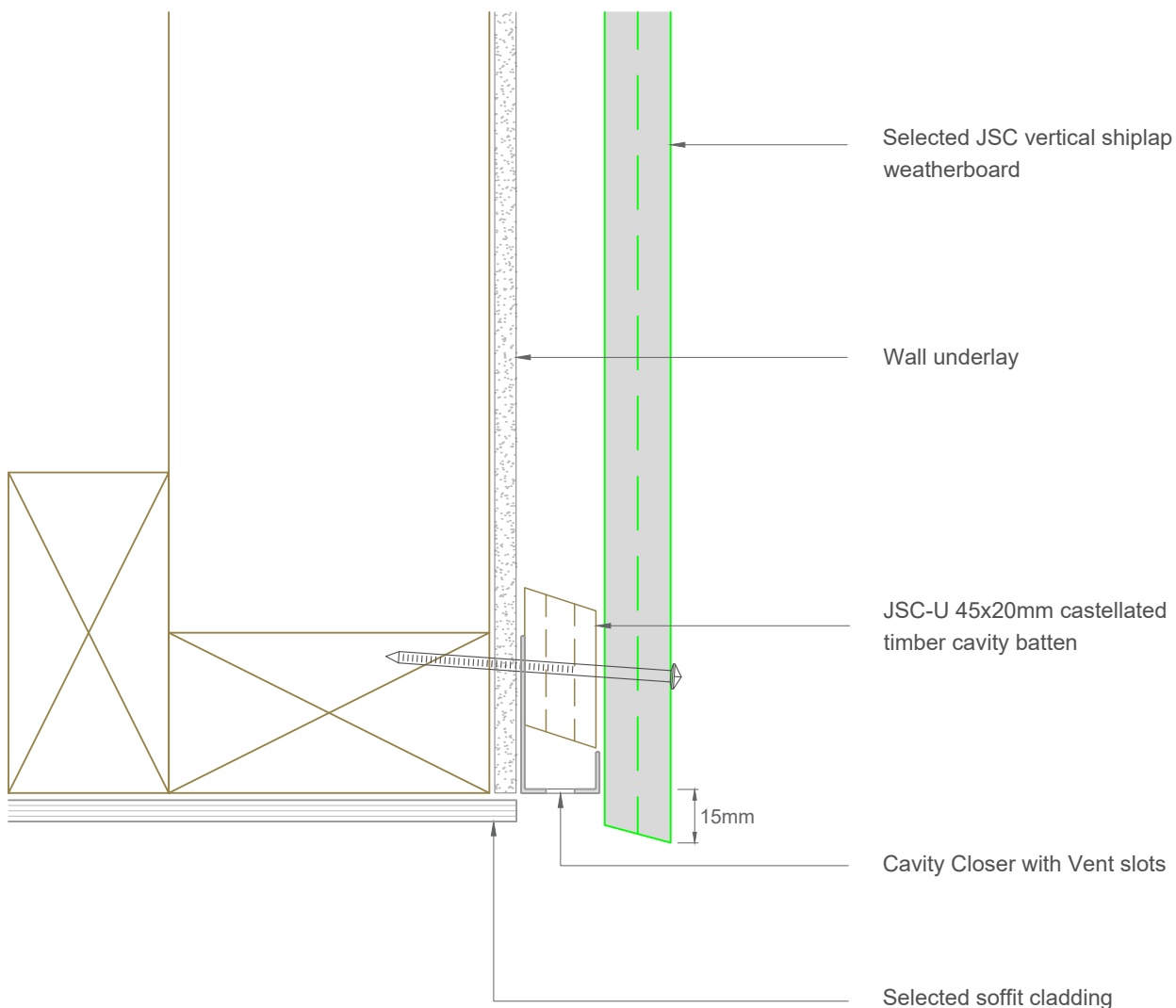
Date: 12/02/2024

Email: TechHelp@jsctimber.co.nz

Web: www.jsctimber.co.nz

Auckland
20 Sawmill Road
Riverhead
☎ 09 412 2800

Christchurch
72 Hammersmith Drive
Wigram
☎ 03 348 9726



Note: To be read in conjunction with complete JSC installation instructions • Details may be subject to change without notification

Bottom Plate Soffit Detail - Rigid Underlay

JV-R20-04

Scale: 1:2

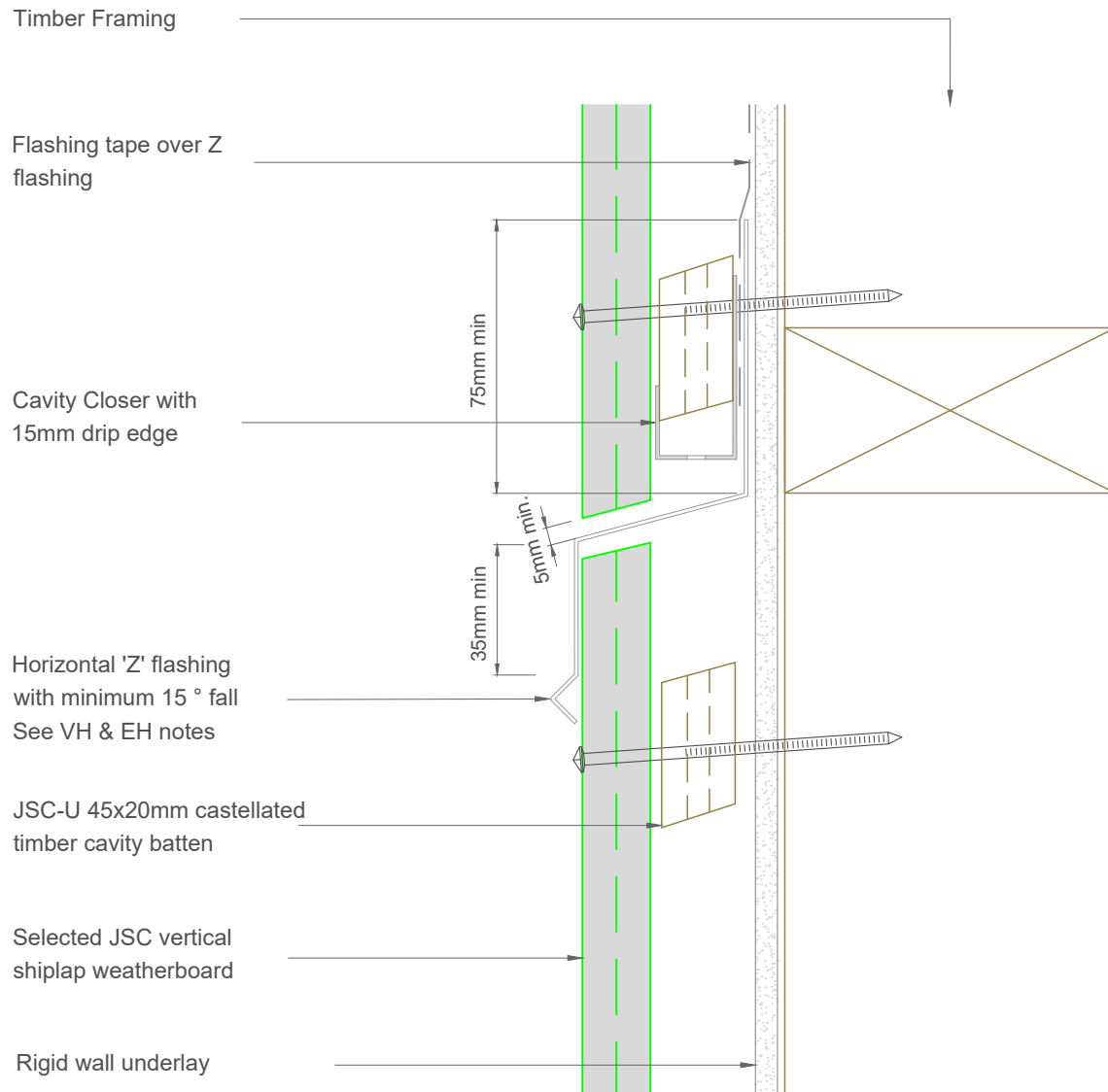
Date: 12/02/2024

Email: TechHelp@jsctimber.co.nz

Web: www.jsctimber.co.nz

Auckland
20 Sawmill Road
Riverhead
☎ 09 412 2800

Christchurch
72 Hammersmith Drive
Wigram
☎ 03 348 9726



Note: To be read in conjunction with complete JSC installation instructions • Details may be subject to change without notification

Inter Storey Junction Detail

JV-R20-05

Scale: 1:2
Date: 12/02/2024

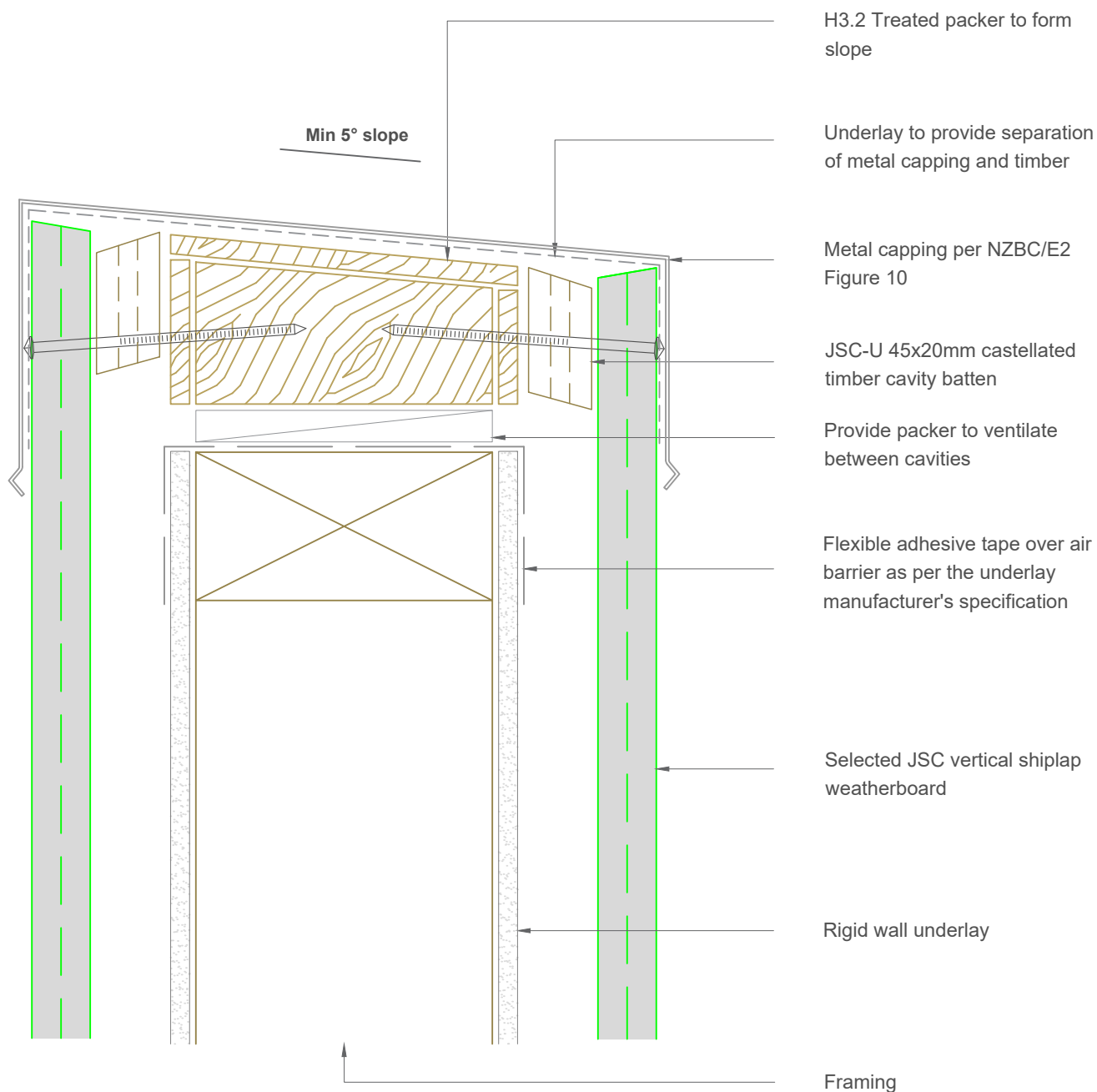
Email: TechHelp@jsctimber.co.nz

Web: www.jsctimber.co.nz

Auckland
20 Sawmill Road
Riverhead
☎ 09 412 2800

Christchurch
72 Hammersmith Drive
Wigram
☎ 03 348 9726





Note:- Parapet Design & installation should comply to NZBC/E2 Section 6

Note: To be read in conjunction with complete JSC installation instructions • Details may be subject to change without notification

Parapet Detail - Rigid Underlay

JV-R20-06

Scale: 1:2

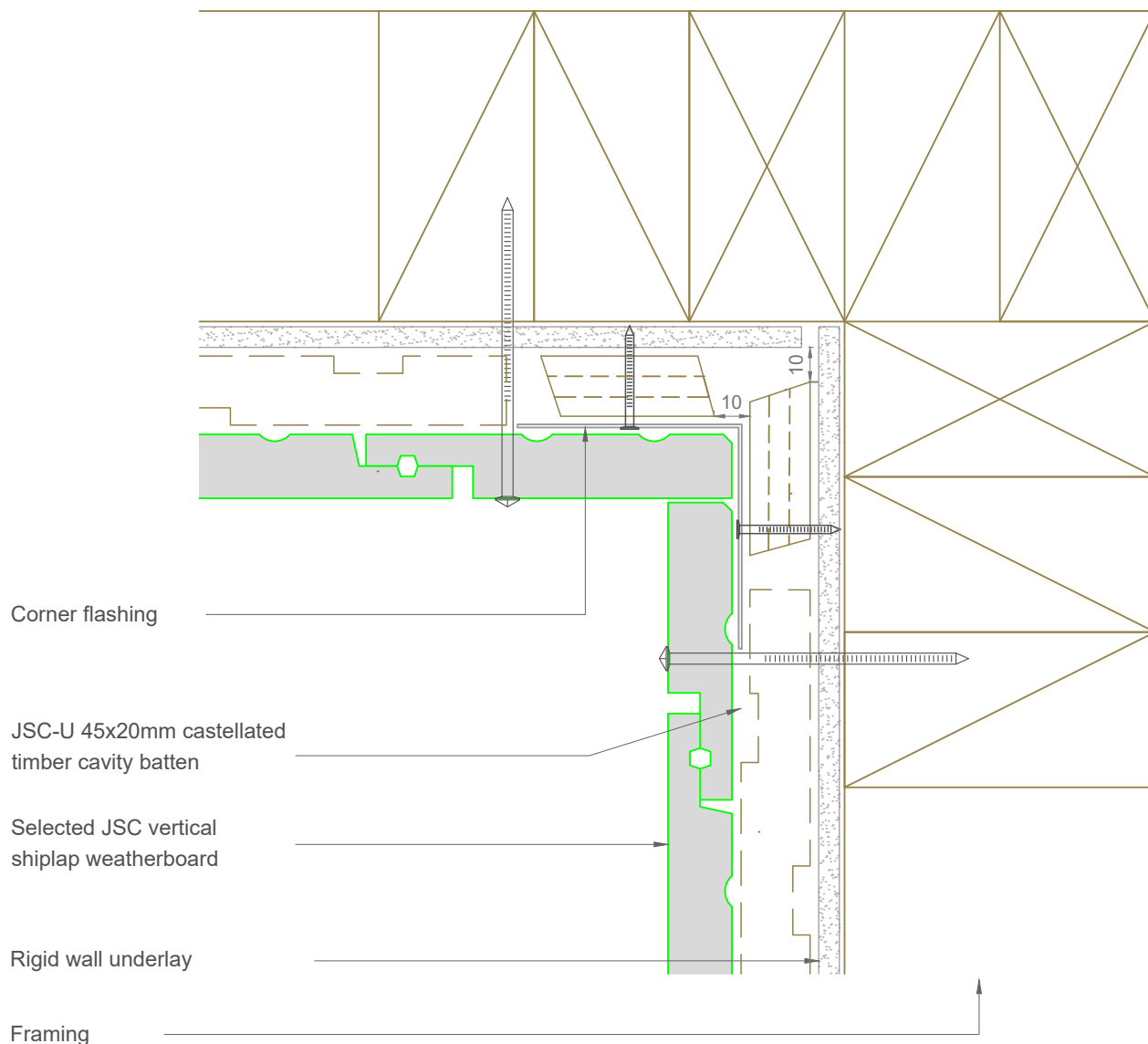
Date: 12/02/2024

Email: TechHelp@jsttimber.co.nz

Web: www.jsttimber.co.nz

Auckland
20 Sawmill Road
Riverhead
☎ 09 412 2800

Christchurch
72 Hammersmith Drive
Wigram
☎ 03 348 9726



Note: To be read in conjunction with complete JSC installation instructions • Details may be subject to change without notification

Internal Corner Detail - Rigid Underlay

JV-R20-10

Scale: 1:2

Date: 12/02/2024

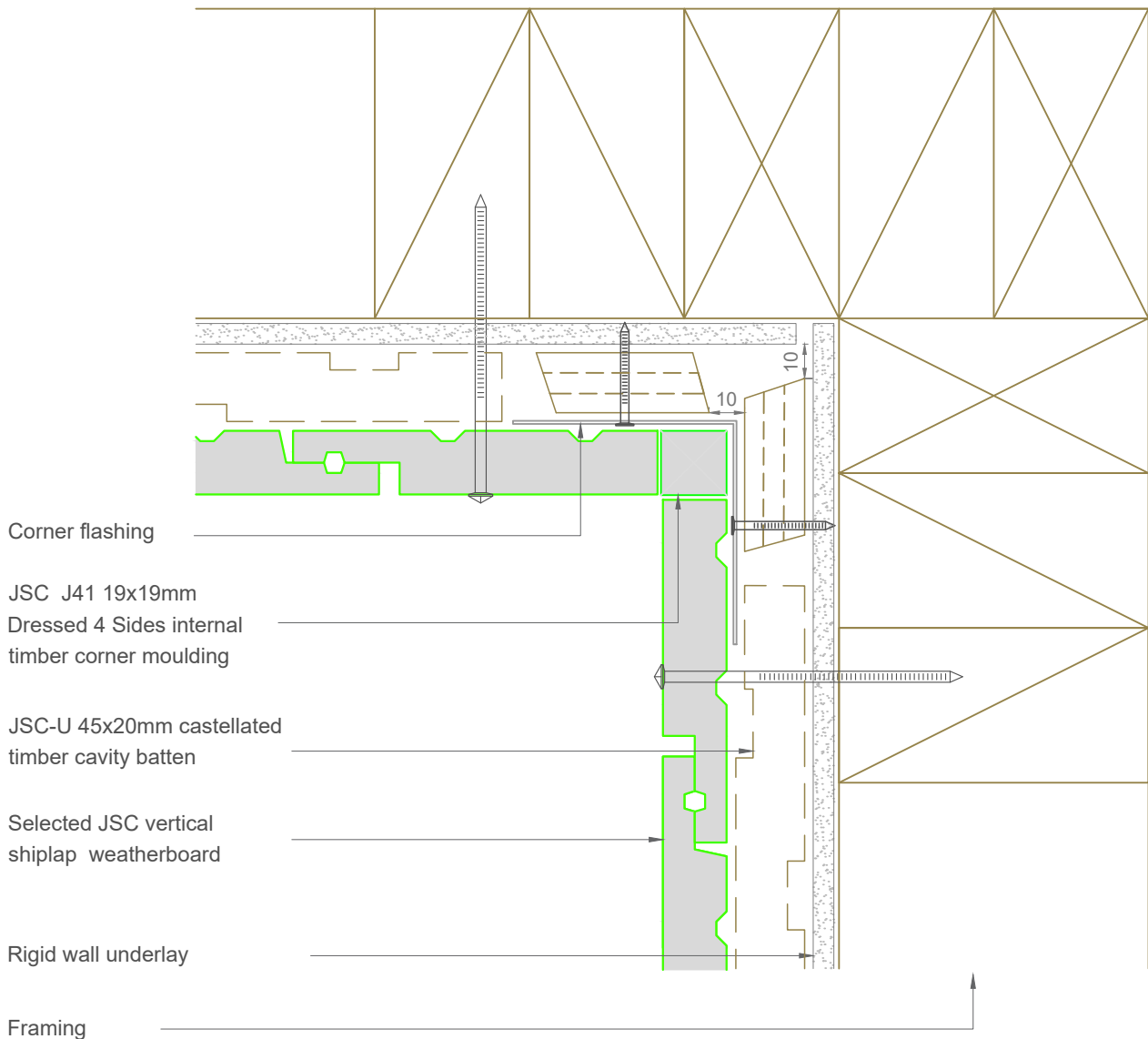
Email: TechHelp@jsctimber.co.nz

Web: www.jsctimber.co.nz

Auckland
20 Sawmill Road
Riverhead
☎ 09 412 2800

Christchurch
72 Hammersmith Drive
Wigram
☎ 03 348 9726





Note: To be read in conjunction with complete JSC installation instructions • Details may be subject to change without notification

Internal Corner Detail - Rigid Underlay

JV-R20-11

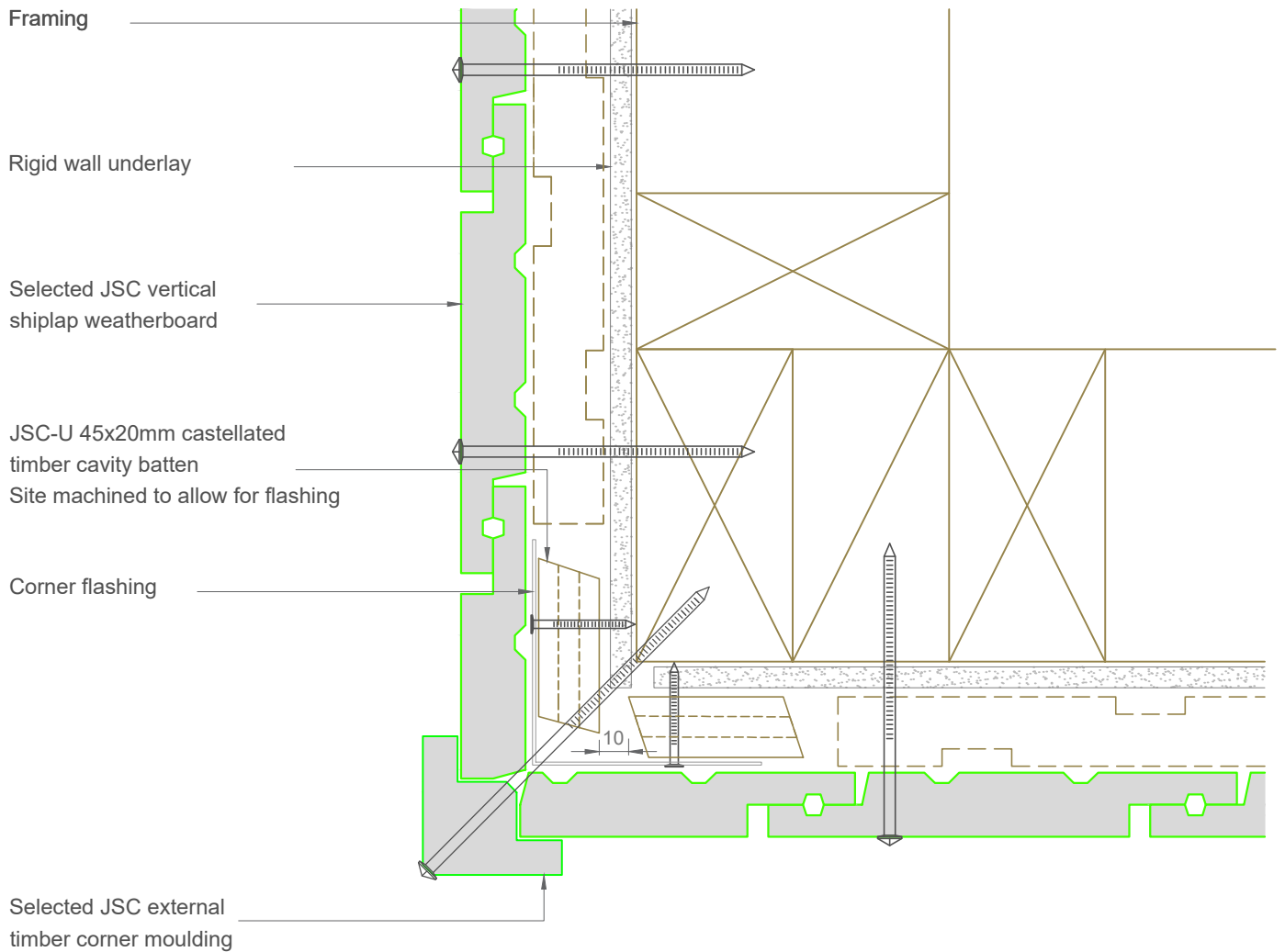
Scale: 1:2
Date: 12/02/2024

Email: TechHelp@jsttimber.co.nz

Web: www.jsttimber.co.nz

Auckland
20 Sawmill Road
Riverhead
☎ 09 412 2800

Christchurch
72 Hammersmith Drive
Wigram
☎ 03 348 9726



Note: To be read in conjunction with complete JSC installation instructions • Details may be subject to change without notification

External Corner Detail- Rigid Underlay

JV-R20-13

Scale: 1:2
Date: 12/02/2024

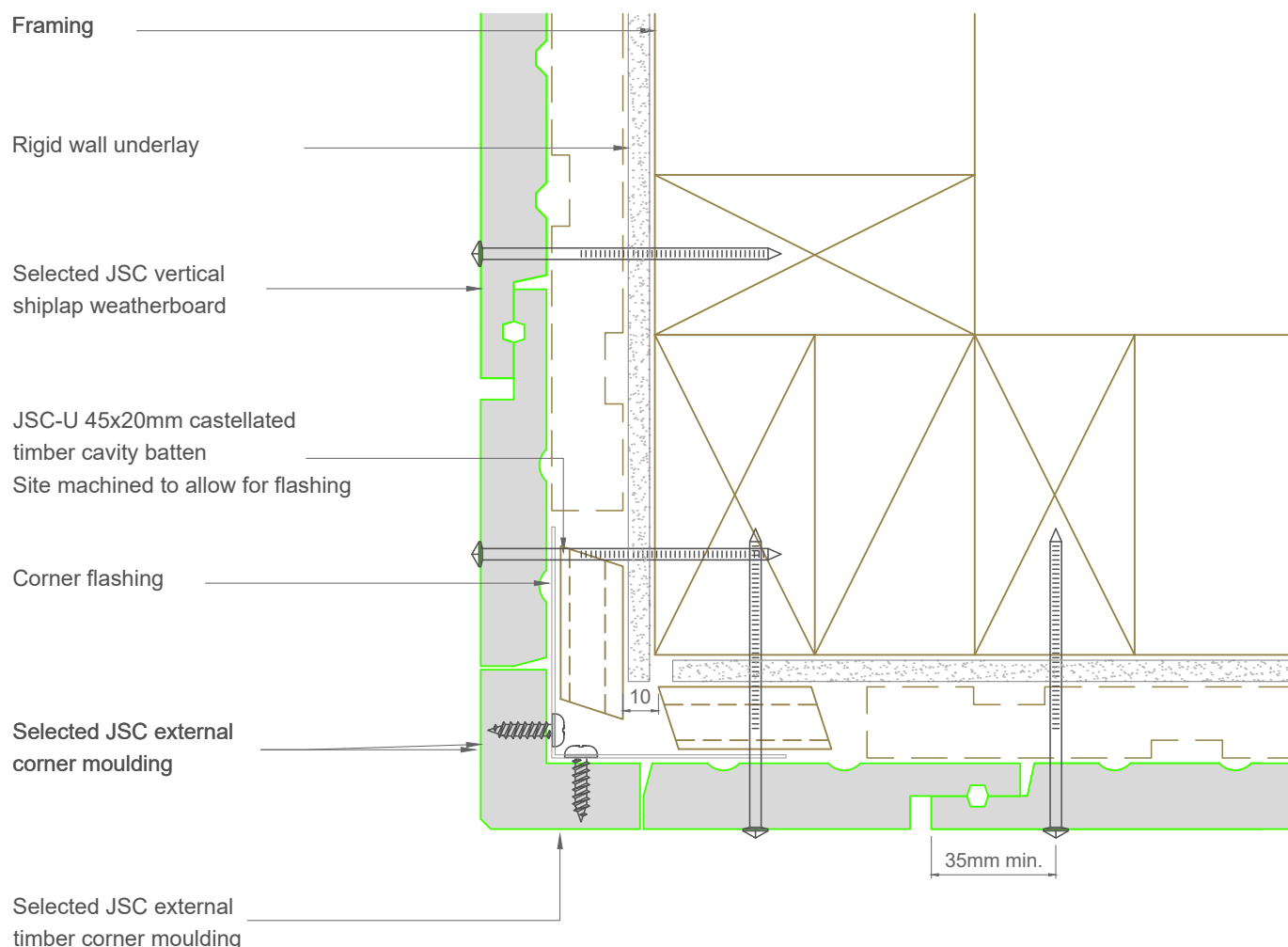
Email: TechHelp@jsttimber.co.nz

Web: www.jsttimber.co.nz

Auckland
20 Sawmill Road
Riverhead
☎ 09 412 2800

Christchurch
72 Hammersmith Drive
Wigram
☎ 03 348 9726





Note: To be read in conjunction with complete JSC installation instructions • Details may be subject to change without notification

External Corner Detail - Rigid Underlay

JV-R20-14

Scale: 1:2

Date: 12/02/2024

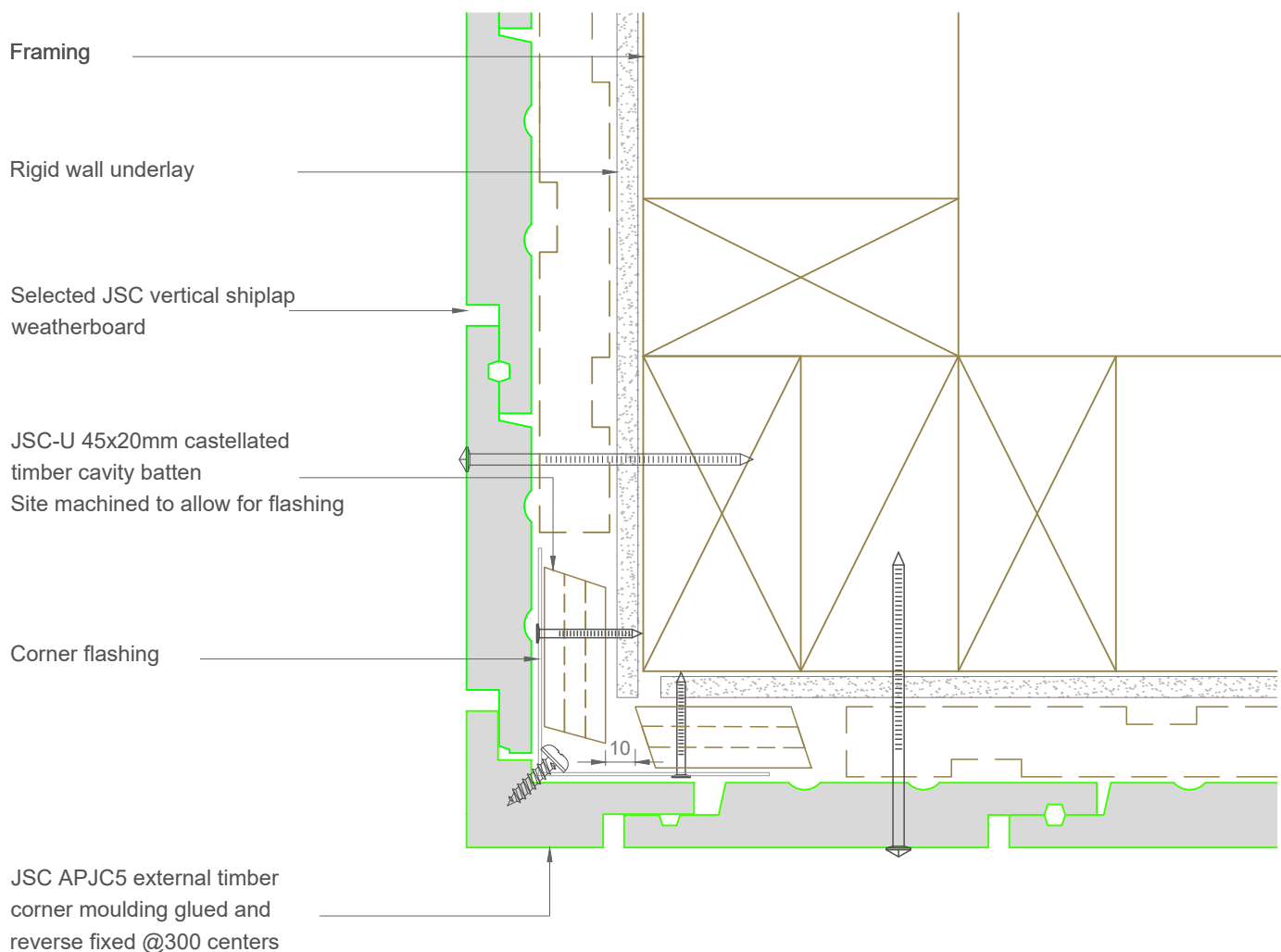
Email: TechHelp@jsctimber.co.nz

Web: www.jsctimber.co.nz

Auckland
20 Sawmill Road
Riverhead
☎ 09 412 2800

Christchurch
72 Hammersmith Drive
Wigram
☎ 03 348 9726





Note: To be read in conjunction with complete JSC installation instructions • Details may be subject to change without notification

External Corner Detail - Rigid Underlay

JV-R20-16

Scale: 1:2

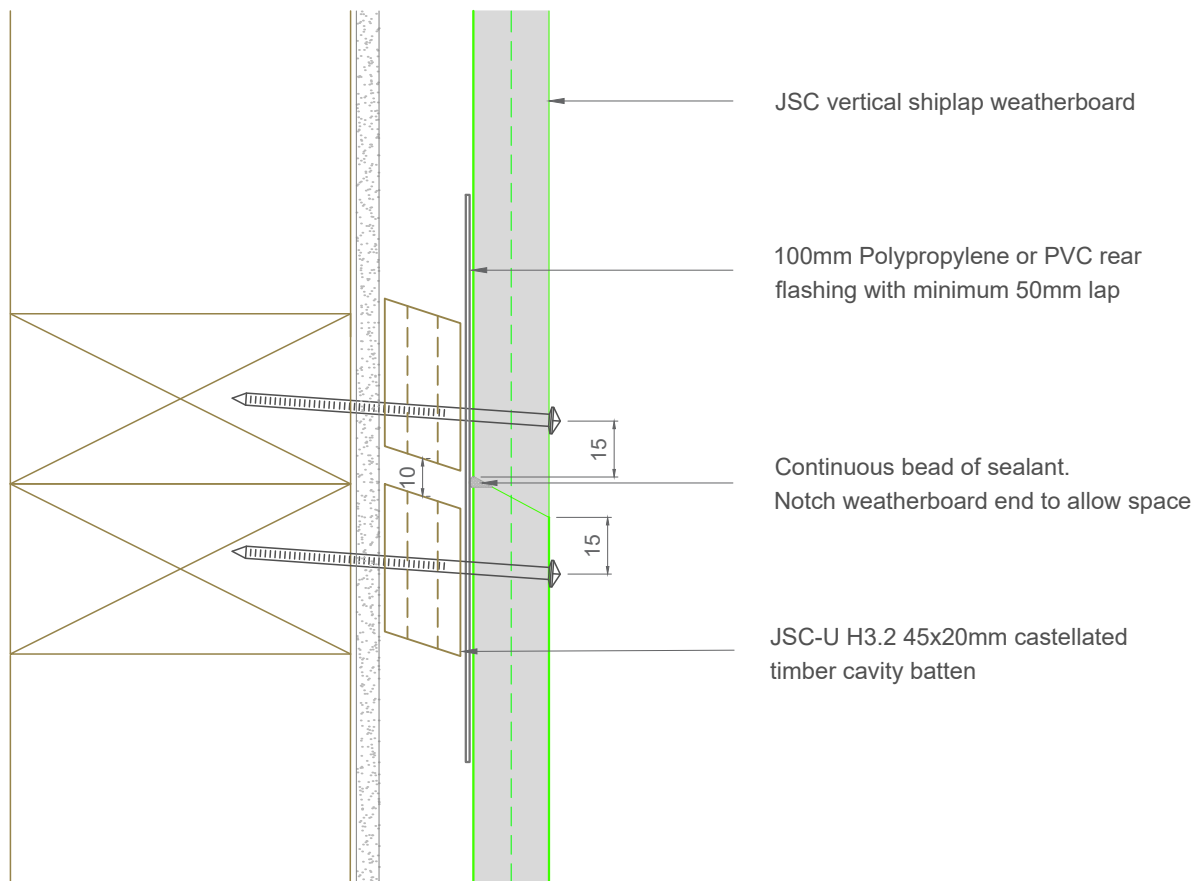
Date: 12/02/2024

Email: TechHelp@jsctimber.co.nz

Web: www.jsctimber.co.nz

Auckland
20 Sawmill Road
Riverhead
☎ 09 412 2800

Christchurch
72 Hammersmith Drive
Wigram
☎ 03 348 9726



Note: To be read in conjunction with complete JSC installation instructions • Details may be subject to change without notification

Scarf Joint Detail

- Rigid Underlay

JV-R20-20

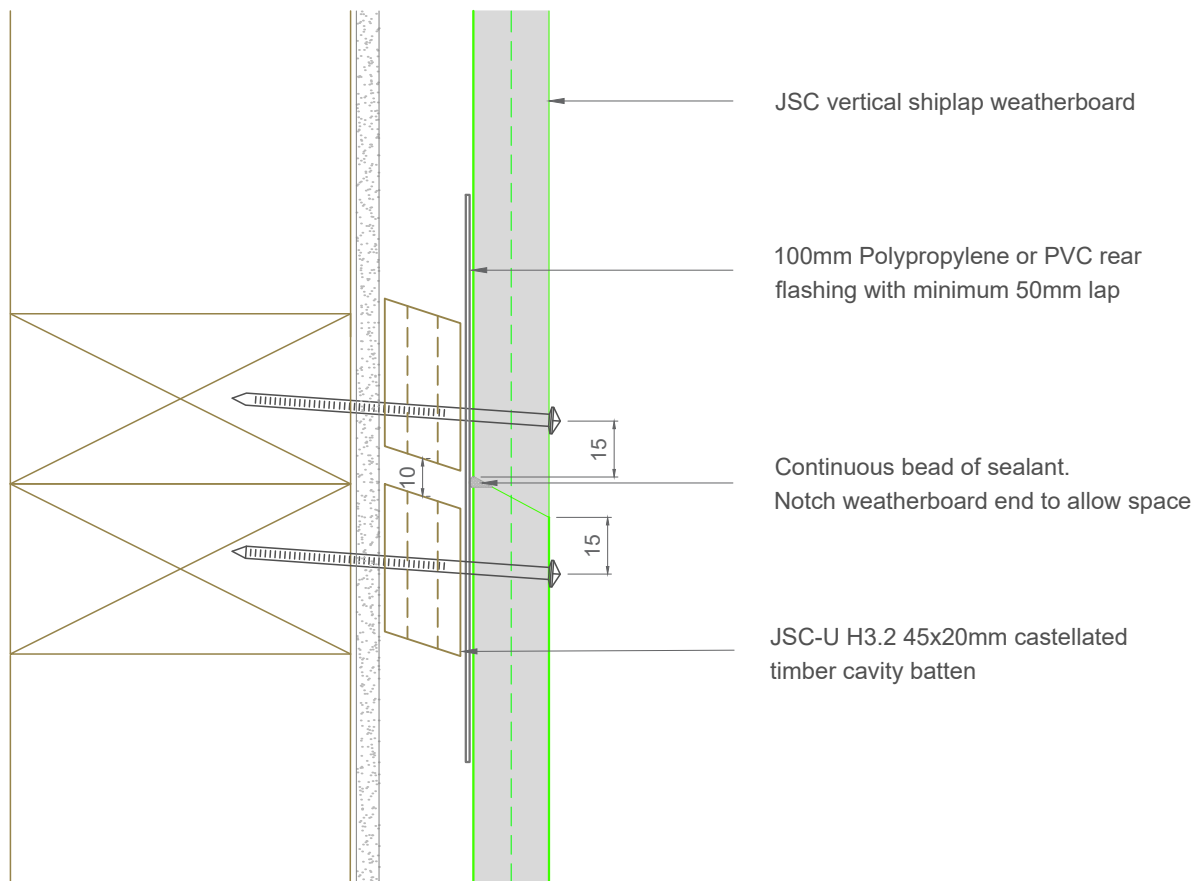
Scale: 1:2
Date: 12/02/2024

Email: TechHelp@jsctimber.co.nz

Web: www.jsctimber.co.nz

Auckland
20 Sawmill Road
Riverhead
☎ 09 412 2800

Christchurch
72 Hammersmith Drive
Wigram
☎ 03 348 9726



Note: To be read in conjunction with complete JSC installation instructions • Details may be subject to change without notification

Scarf Joint Detail

- Rigid Underlay

JV-R20-20

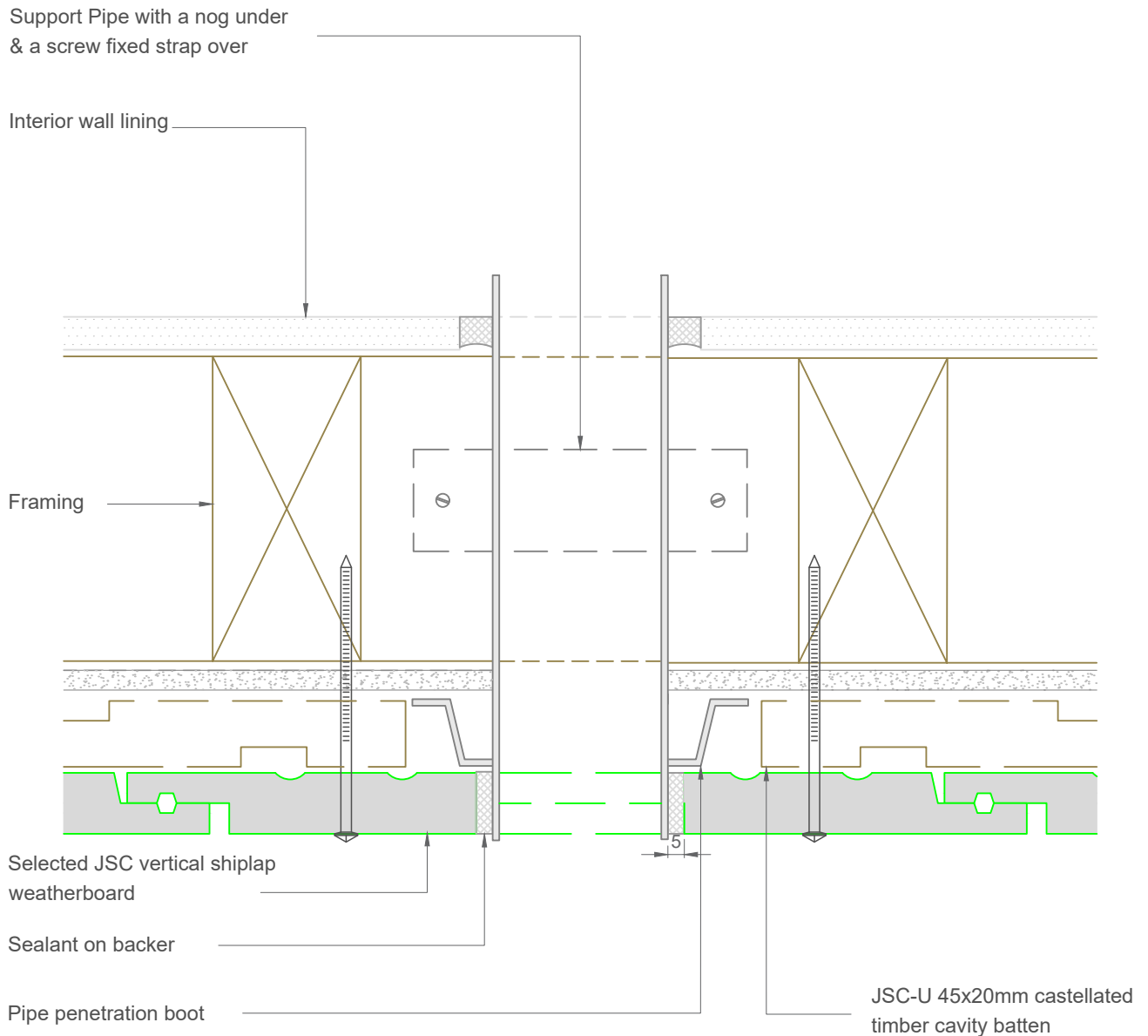
Scale: 1:2
Date: 12/02/2024

Email: TechHelp@jsctimber.co.nz

Web: www.jsctimber.co.nz

Auckland
20 Sawmill Road
Riverhead
☎ 09 412 2800

Christchurch
72 Hammersmith Drive
Wigram
☎ 03 348 9726



Note: To be read in conjunction with complete JSC installation instructions • Details may be subject to change without notification

Pipe Penetration Detail - Rigid Underlay

JV-R20-21

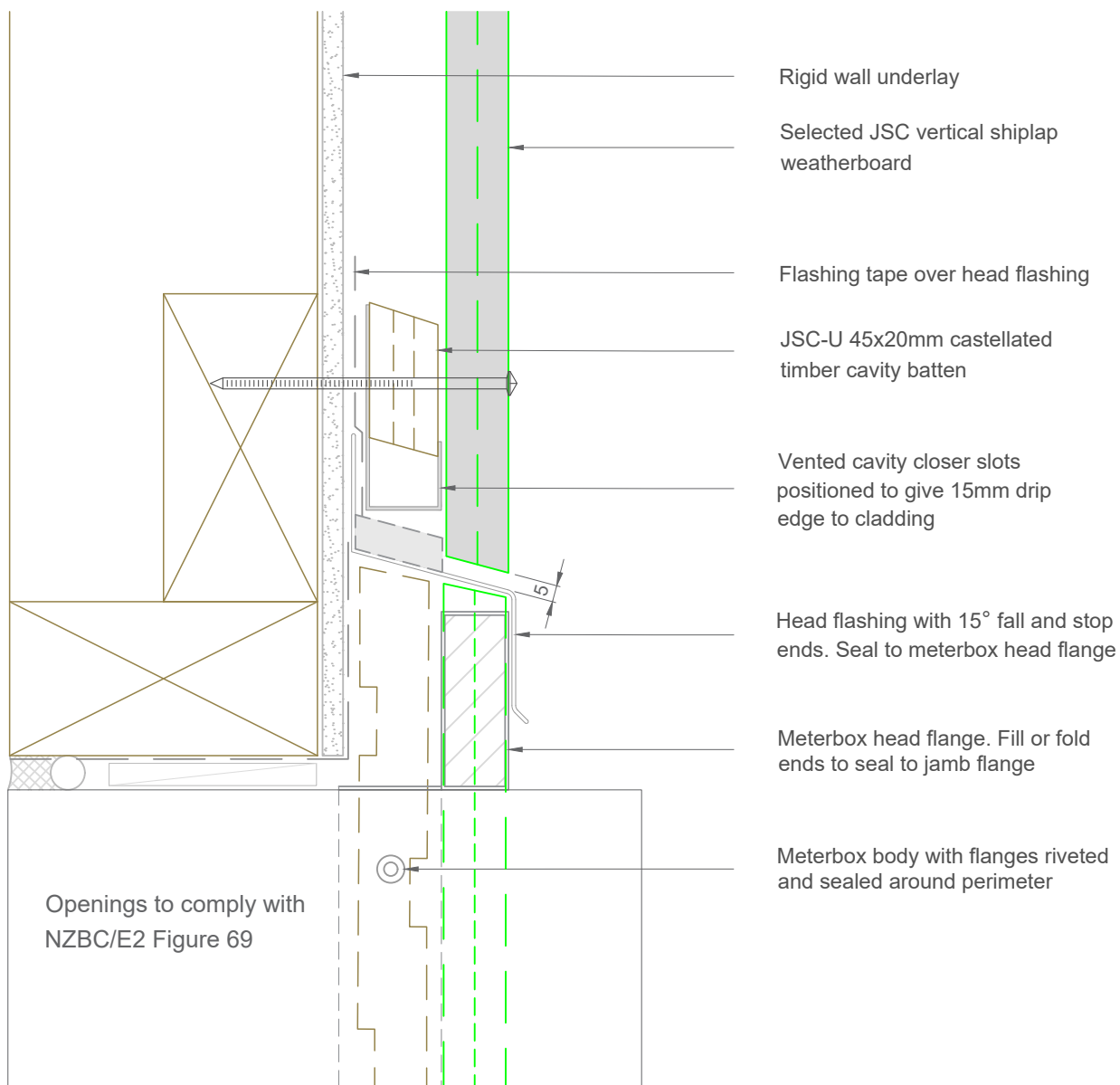
Scale: 1:2
Date: 12/02/2024

Email: TechHelp@jsctimber.co.nz

Web: www.jsctimber.co.nz

Auckland
20 Sawmill Road
Riverhead
☎ 09 412 2800

Christchurch
72 Hammersmith Drive
Wigram
☎ 03 348 9726



Note: To be read in conjunction with complete JSC installation instructions • Details may be subject to change without notification

MeterBox Head Detail - Rigid Underlay

JV-R20-25

Scale: 1:2

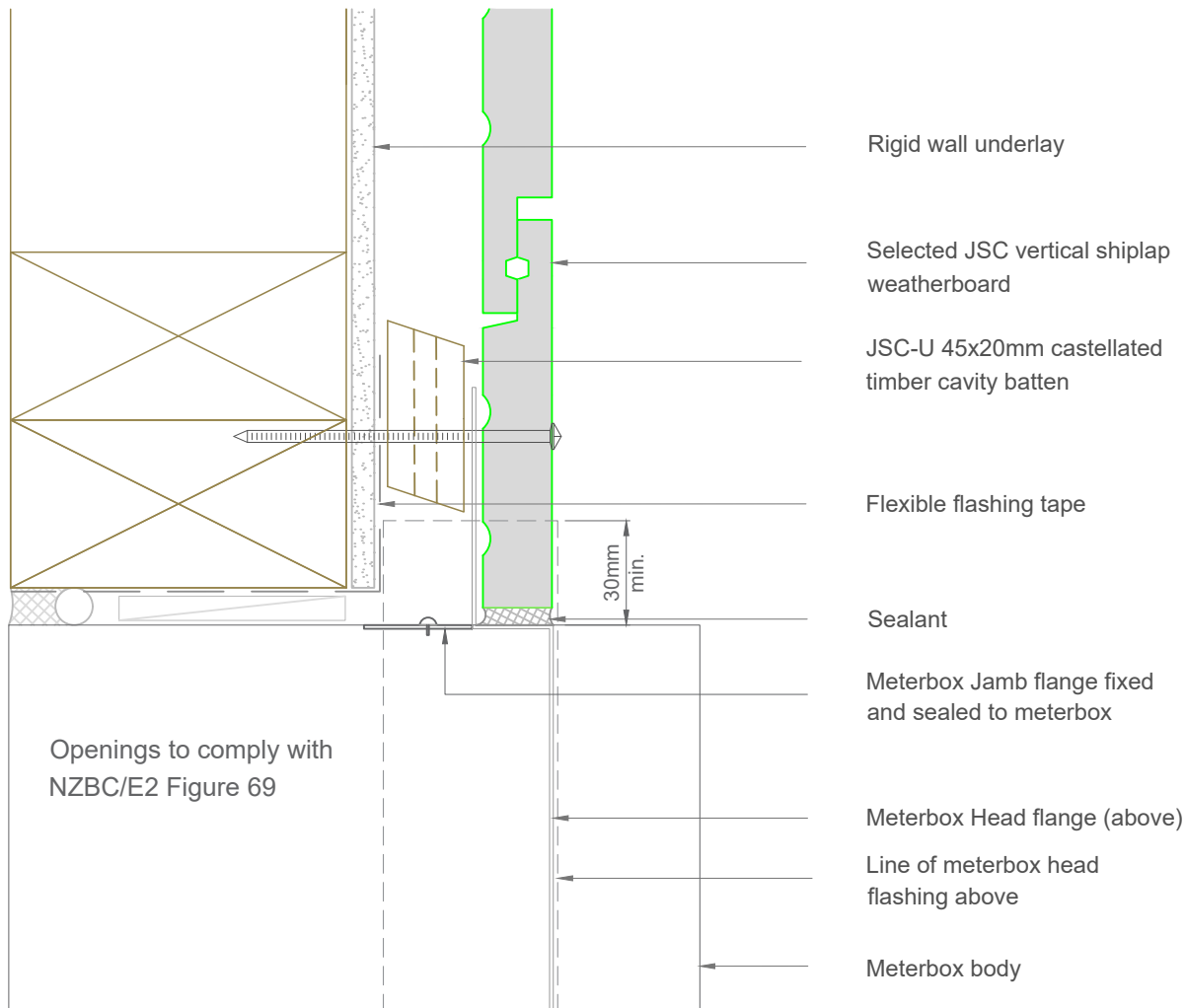
Date: 12/02/2024

Email: TechHelp@jsttimber.co.nz

Web: www.jsttimber.co.nz

Auckland
20 Sawmill Road
Riverhead
☎ 09 412 2800

Christchurch
72 Hammersmith Drive
Wigram
☎ 03 348 9726



Note: To be read in conjunction with complete JSC installation instructions • Details may be subject to change without notification

MeterBox Jamb Detail - Rigid Underlay

JV-R20-26

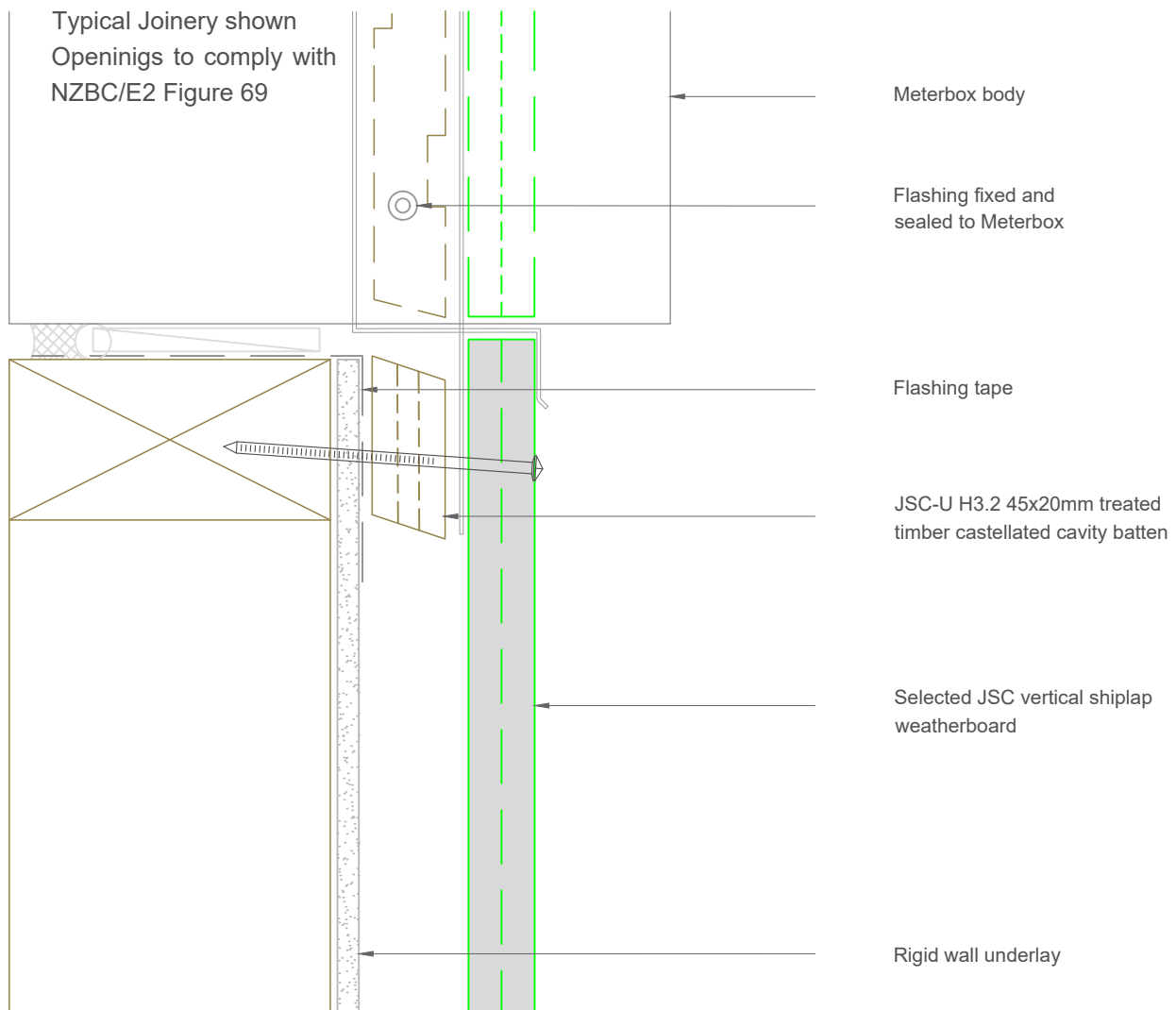
Scale: 1:2
Date: 12/02/2024

Email: TechHelp@jsctimber.co.nz

Web: www.jsctimber.co.nz

Auckland
20 Sawmill Road
Riverhead
☎ 09 412 2800

Christchurch
72 Hammersmith Drive
Wigram
☎ 03 348 9726



Note: To be read in conjunction with complete JSC installation instructions • Details may be subject to change without notification

MeterBox Sill Detail - Rigid Underlay

JV-R20-27

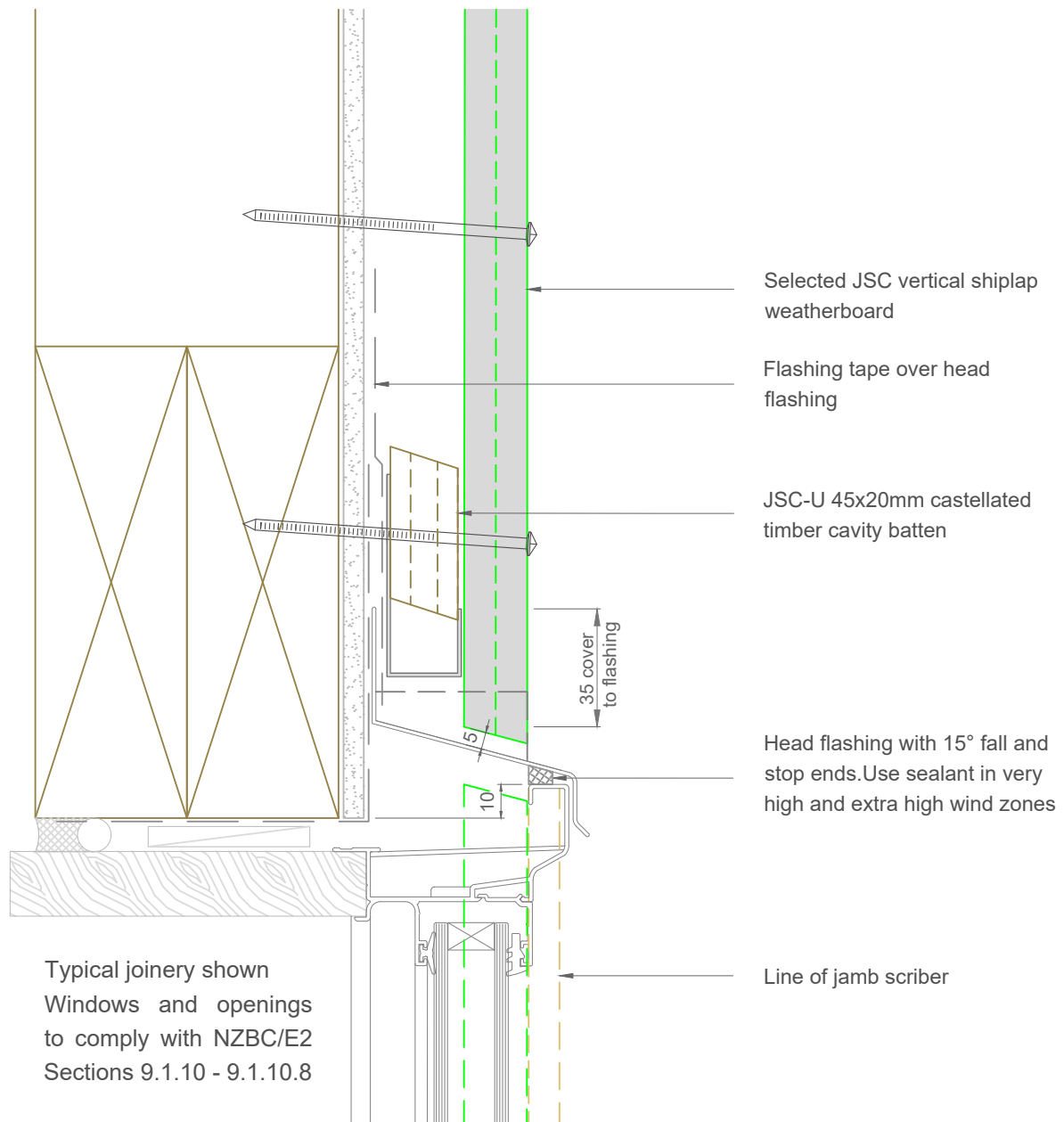
Scale: 1:2
Date: 12/02/2024

Email: TechHelp@jsttimber.co.nz

Auckland
20 Sawmill Road
Riverhead
☎ 09 412 2800

Christchurch
72 Hammersmith Drive
Wigram
☎ 03 348 9726

Web: www.jsttimber.co.nz



Note: To be read in conjunction with complete JSC installation instructions • Details may be subject to change without notification

Window Head Detail - Rigid Underlay

JV-R20-30

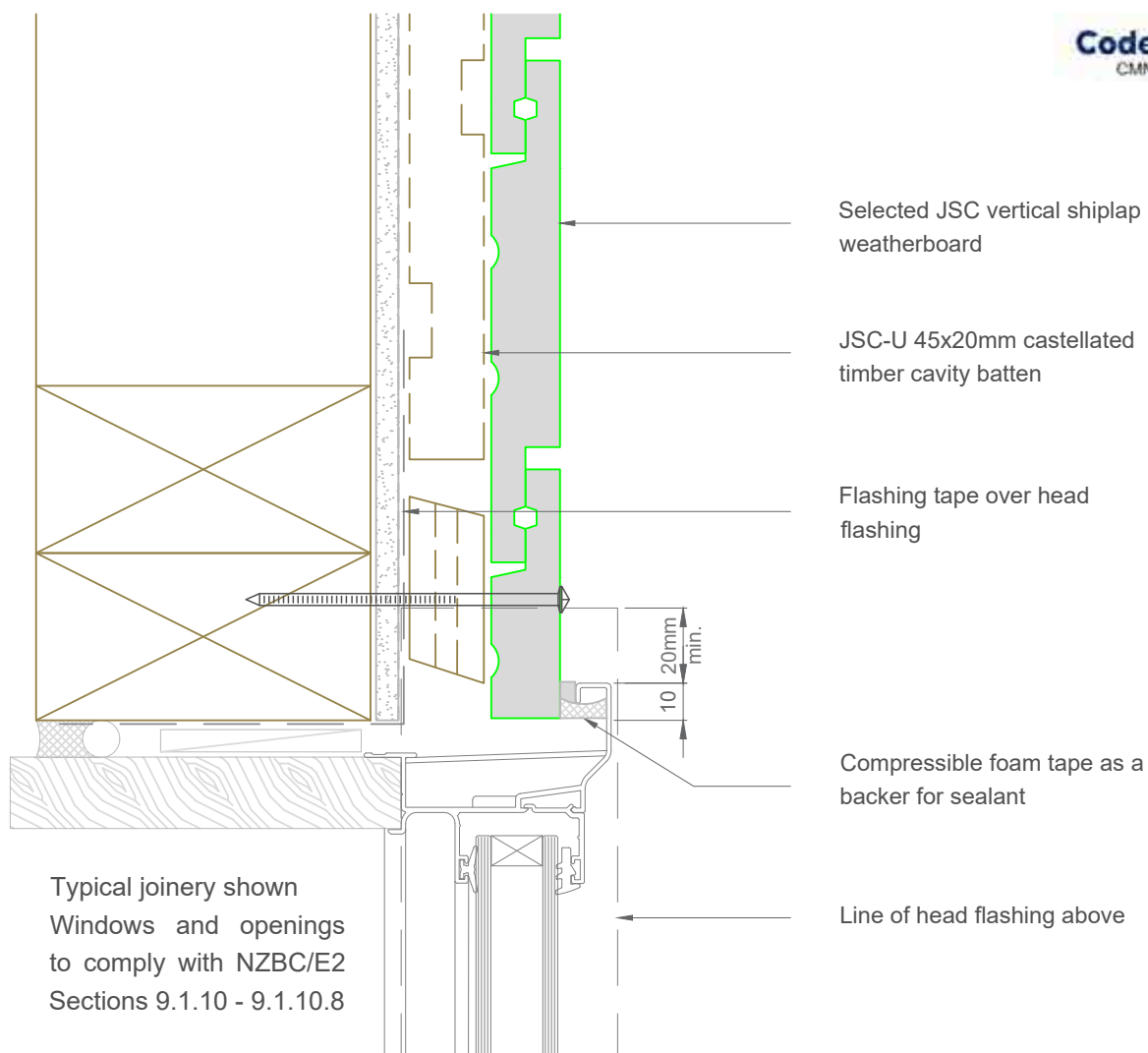
Scale: 1:2
Date: 12/02/2024

Email: TechHelp@jsctimber.co.nz

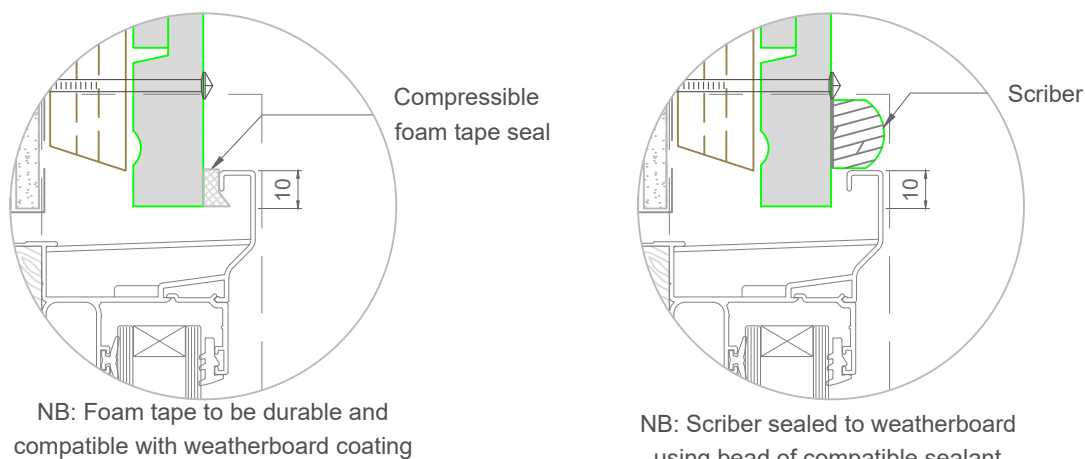
Web: www.jsctimber.co.nz

Auckland
20 Sawmill Road
Riverhead
☎ 09 412 2800

Christchurch
72 Hammersmith Drive
Wigram
☎ 03 348 9726



Optional



Note: To be read in conjunction with complete JSC installation instructions • Details may be subject to change without notification

Window Jamb Detail - Rigid Underlay

JV-R20-31

Scale: 1:2

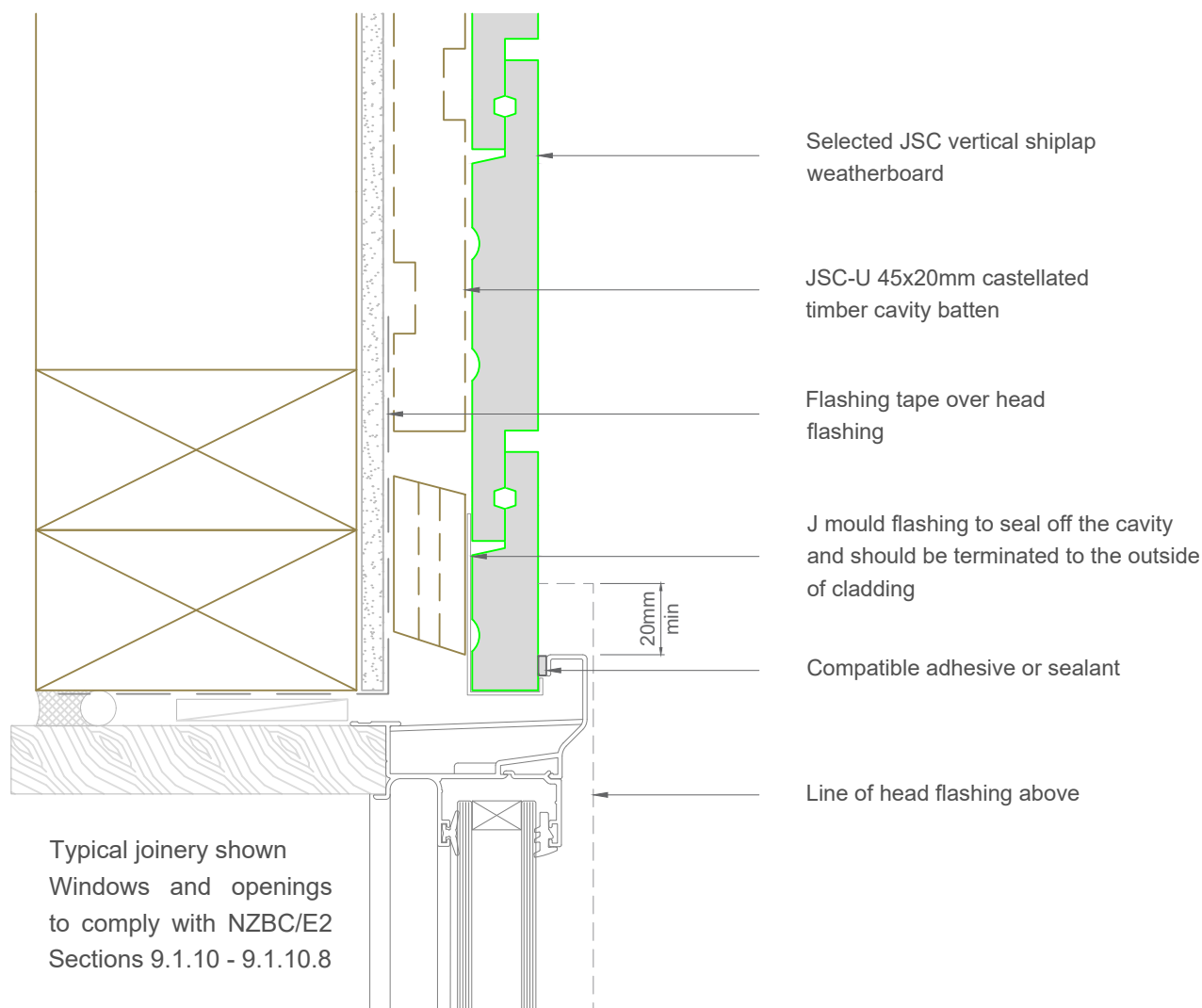
Date: 12/02/2024

Email: TechHelp@jsttimber.co.nz

Web: www.jsttimber.co.nz

Auckland
20 Sawmill Road
Riverhead
☎ 09 412 2800

Christchurch
72 Hammersmith Drive
Wigram
☎ 03 348 9726



Note: To be read in conjunction with complete JSC installation instructions • Details may be subject to change without notification

Window Jamb Detail - Rigid Underlay

JV-R20-32

Scale: 1:2

Date: 12/02/2024

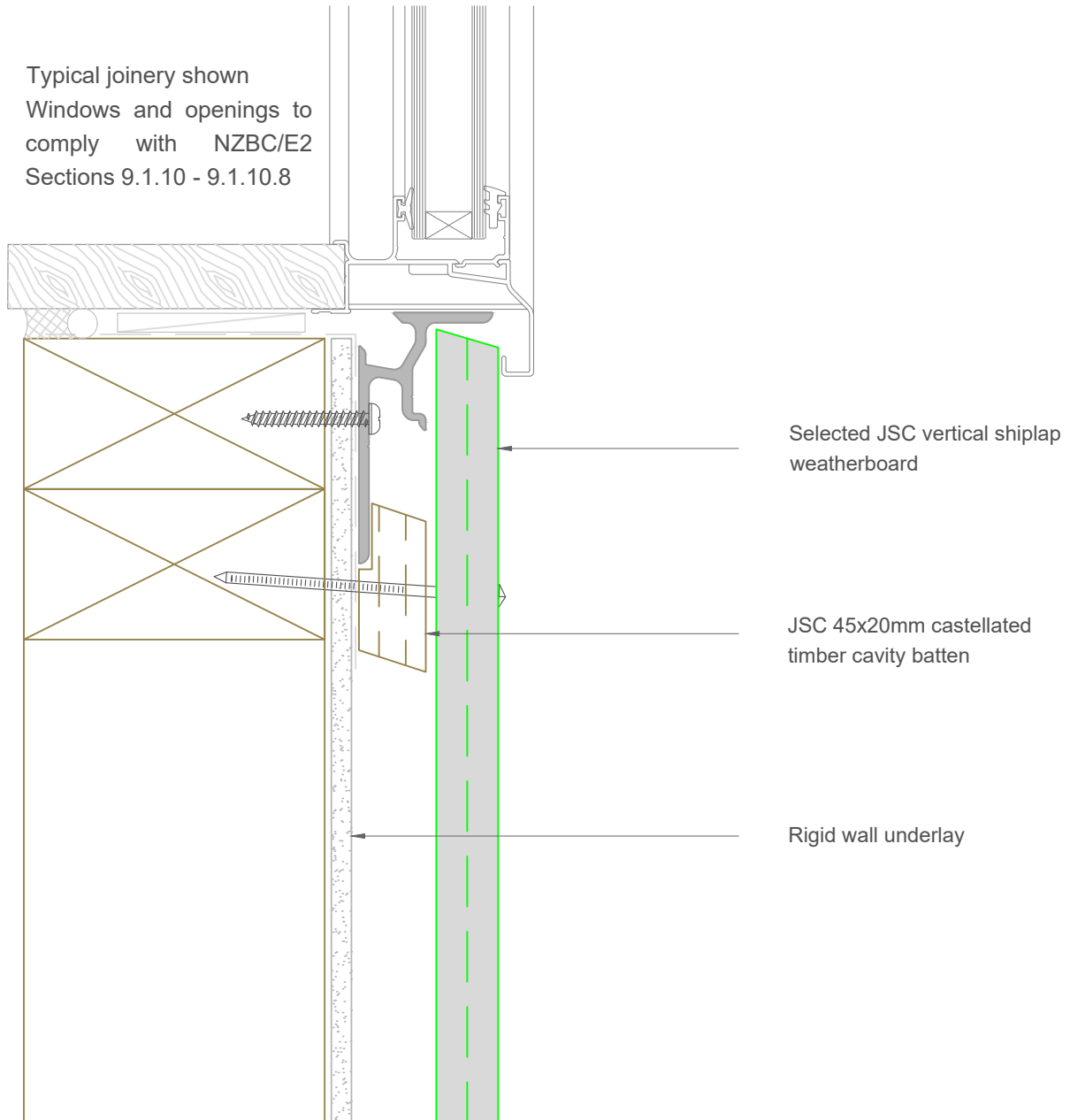
Email: TechHelp@jsctimber.co.nz

Web: www.jsctimber.co.nz

Auckland
20 Sawmill Road
Riverhead
☎ 09 412 2800

Christchurch
72 Hammersmith Drive
Wigram
☎ 03 348 9726

Typical joinery shown
Windows and openings to
comply with NZBC/E2
Sections 9.1.10 - 9.1.10.8



Note: To be read in conjunction with complete JSC installation instructions • Details may be subject to change without notification

Window Sill Detail - Rigid Underlay

JV-R20-33

Scale: 1:2
Date: 12/02/2024

Email: TechHelp@jsctimber.co.nz

Web: www.jsctimber.co.nz

Auckland
20 Sawmill Road
Riverhead
☎ 09 412 2800

Christchurch
72 Hammersmith Drive
Wigram
☎ 03 348 9726