



JSC VertiClad
Vertical Shiplap Weatherboard Cladding
45mm Cavity on Flexible Underlay

Version 1.1 | 25/08/2023



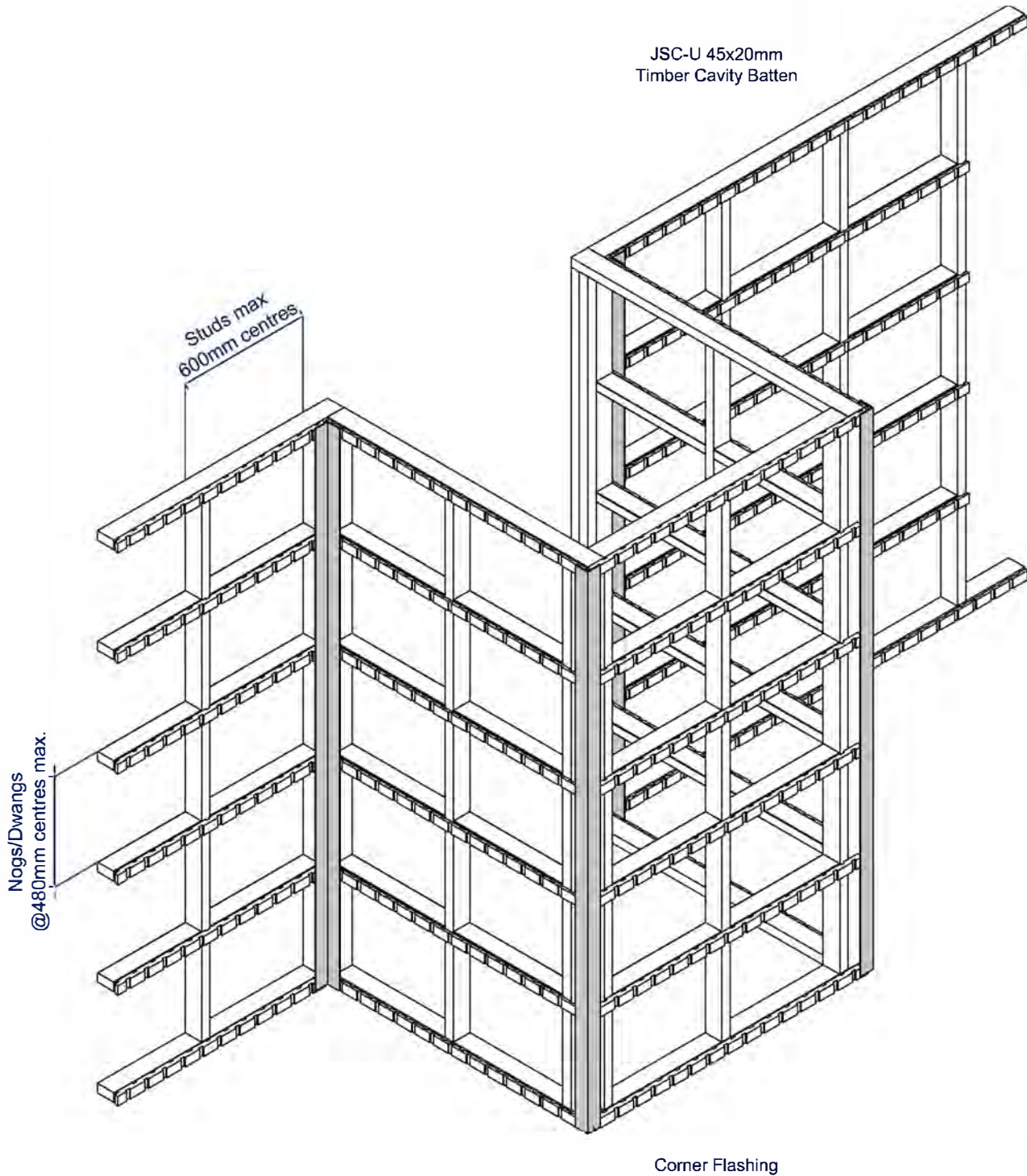
PREMIUM ARCHITECTURAL
& BUILDING SOLUTIONS

Index

20mm Cavity Setout Guide Fixed Horizontally

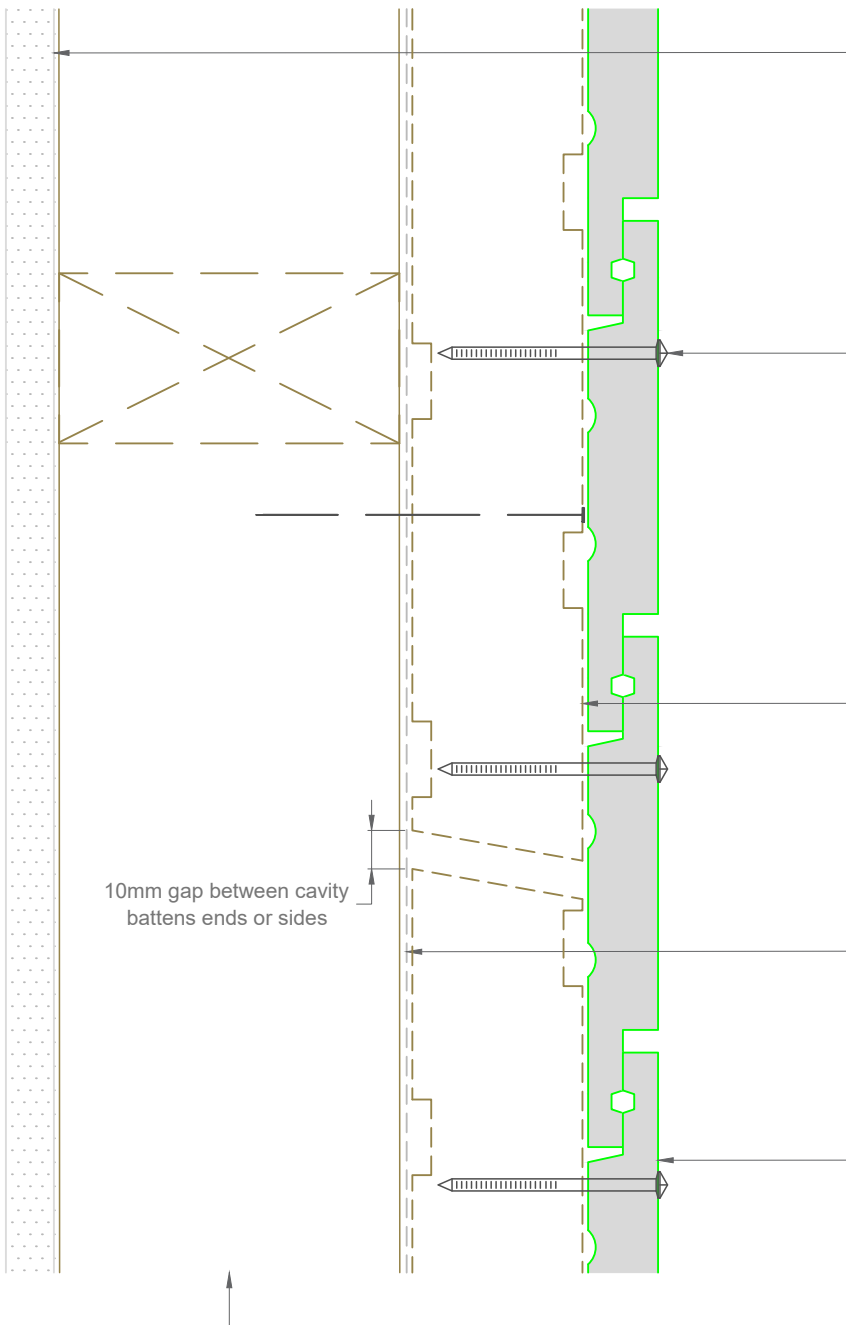
JV-F45-SEC01	Sectional Detail – Plan View
JV-F45-SEC02	Sectional Detail – Cross Section View
JV-F45-01	Bottom Plate Detail
JV-F45-01A	Bottom Plate on Timber Detail
JV-F45-02	Top Plate Soffit Detail
JV-F45-03	Raking Soffit Detail
JV-F45-04	Bottom Plate Soffit Detail
JV-F45-05	Inter Storey Junction Detail
JV-F45-06	Parapet Detail
JV-F45-10	Internal Corner Detail
JV-F45-11	Internal Corner Detail
JV-F45-13	External Corner Box Detail – J40W
JV-F45-14	External Corner Box Detail – J42
JV-F45-16	External Corner Box Detail – APJC5
JV-F45-21	Pipe Penetration Detail
JV-F45-25	Meterbox Head Detail
JV-F45-26	Meterbox Jamb Detail
JV-F45-27	Meterbox Sill Detail
JV-F45-30	Window Head Detail
JV-F45-31	Window Jamb Detail
JV-F45-33	Window Sill Detail

20mm Cavity Batten Setout fixed Horizontally



Note: This setout guide is for fixing JSC-U 45x20 mm Cavity Battens for Vertical weatherboard cladding

Plan View



Interior lining or use rigid wall underlay for unlined walls such as gable ends. See NZBC/E2 paragraph 9.1.4

Single fix at each nog with annular grooved stainless steel or silicon bronze nails as per NZBC/E2 Table 24

- Pre-drilled 1mm diameter smaller than nail gauge
- Nailed with a 2° upward slope
- 35mm min penetration into battens
- Nailed 10mm away from the edge of the lower board (35-40 mm from the edge of the board)
- Minimum 50mm from ends of boards except where shown otherwise

JSC-H H3.2 45x45mm treated timber castellated cavity batten

- 10mm gap between battens
- Always slope away from wall
- See JSC structural cavity batten fixing guide

Flexible or rigid wall underlay to comply with NZBC/E2 Table 23 installed to manufacturers specifications

JSC vertical shiplap weatherboard

- coated with approved suitable coating to all 4 sides and ends prior to installation
- 2mm expansion gap at the under lap

Framing to NZS 3604 or "fit for purpose"

Note: To be read in conjunction with complete JSC installation instructions • Details may be subject to change without notification

Sectional Detail

JV-F45-SEC01

Scale: 1:2
Date: 25/08/2023

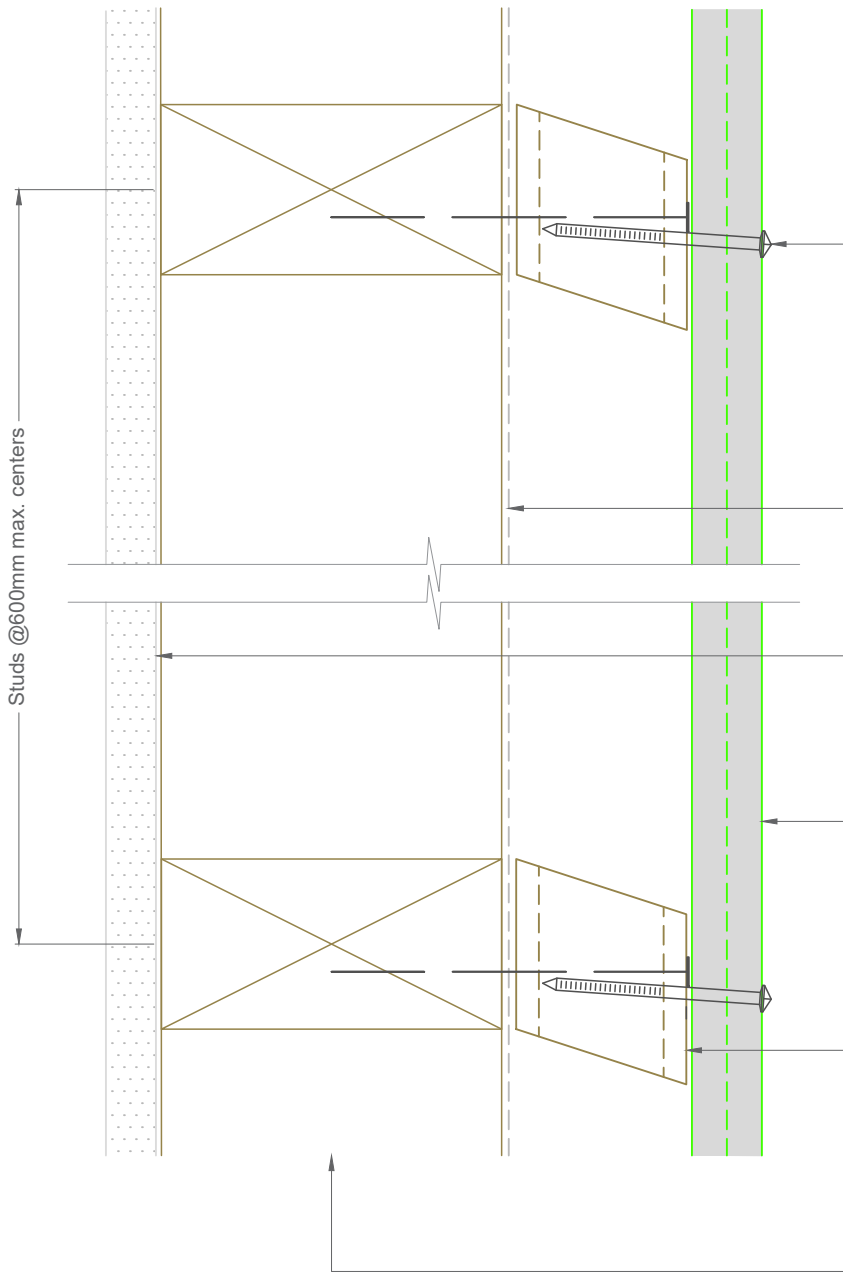
Email: TechHelp@jstimber.co.nz

Auckland
20 Sawmill Road
Riverhead
☎ 09 412 2800

Christchurch
72 Hammersmith Drive
Wigram
☎ 03 348 9726

Web: www.jstimber.co.nz

Cross Section View



Single fix at each stud with annular grooved stainless steel or silicon bronze nails as per NZBC/E2 Table 24

- Pre-drilled 1mm diameter smaller than nail gauge
- Nailed with a 2° upward slope
- 35mm min penetration into structural cavity batten
- Minimum 50mm from ends of boards except where shown otherwise

Flexible or Rigid wall underlay to comply with NZBC/E2 Table 23 installed to manufacturers specifications

Interior lining or use rigid wall underlay for unlined walls such as gable ends.
See NZBC/E2 Paragraph 9.1.4

Selected Vertical Shiplap Weatherboard coated with approved coating to all 4 sides and ends before and during installation

JSC-H H3.2 45x45mm treated timber castellated cavity batten

- Keep 10mm gap between the cavity battens except at bottom plate
- Cut ends of vertical battens to slope away from wall (10-15°)
- See JSC structural battens fixing guide

Framing to NZS 3604 or "fit for purpose"

Note: To be read in conjunction with complete JSC installation instructions • Details may be subject to change without notification

Sectional Detail

JV-F45-SEC02

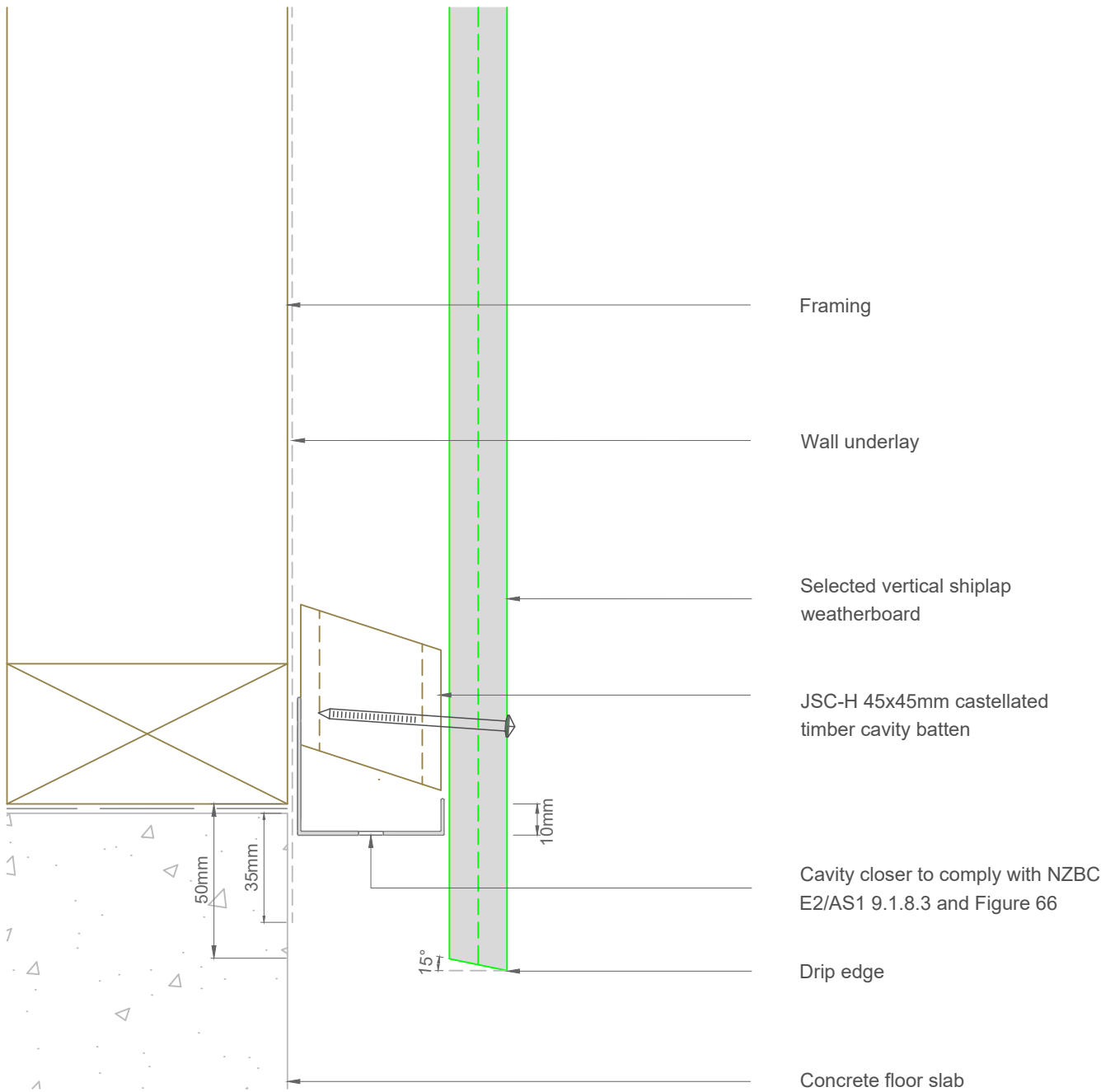
Scale: 1:2
Date: 25/08/2023

Email: TechHelp@jstimber.co.nz

Auckland
20 Sawmill Road
Riverhead
☎ 09 412 2800

Christchurch
72 Hammersmith Drive
Wigram
☎ 03 348 9726

Web: www.jstimber.co.nz



Note:- Maintain ground clearance as per NZBC/E2 paragraph 9.1.3.3 and Table 18

Note: To be read in conjunction with complete JSC installation instructions • Details may be subject to change without notification

Bottom Plate Detail

JV-F45-01

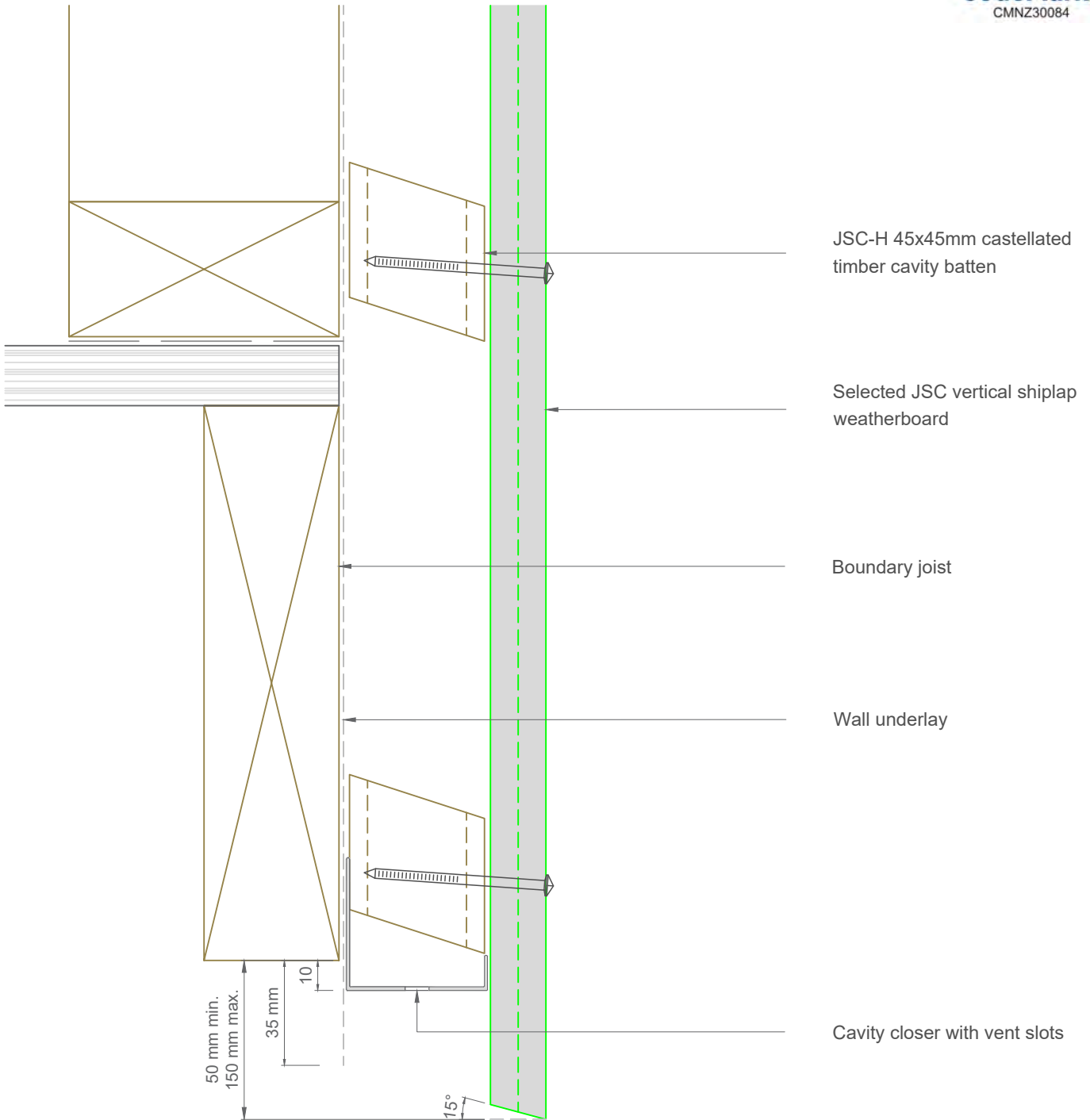
Scale: 1:2
Date: 25/08/2023

Email: TechHelp@jstimber.co.nz

Auckland
20 Sawmill Road
Riverhead
☎ 09 412 2800

Christchurch
72 Hammersmith Drive
Wigram
☎ 03 348 9726

Web: www.jstimber.co.nz



Note:- Maintain ground clearance as per NZBC/E2 paragraph 9.1.3.3 and Table 18

Note: To be read in conjunction with complete JSC installation instructions • Details may be subject to change without notification

Bottom Plate on Timber Detail

JV-F45-01A

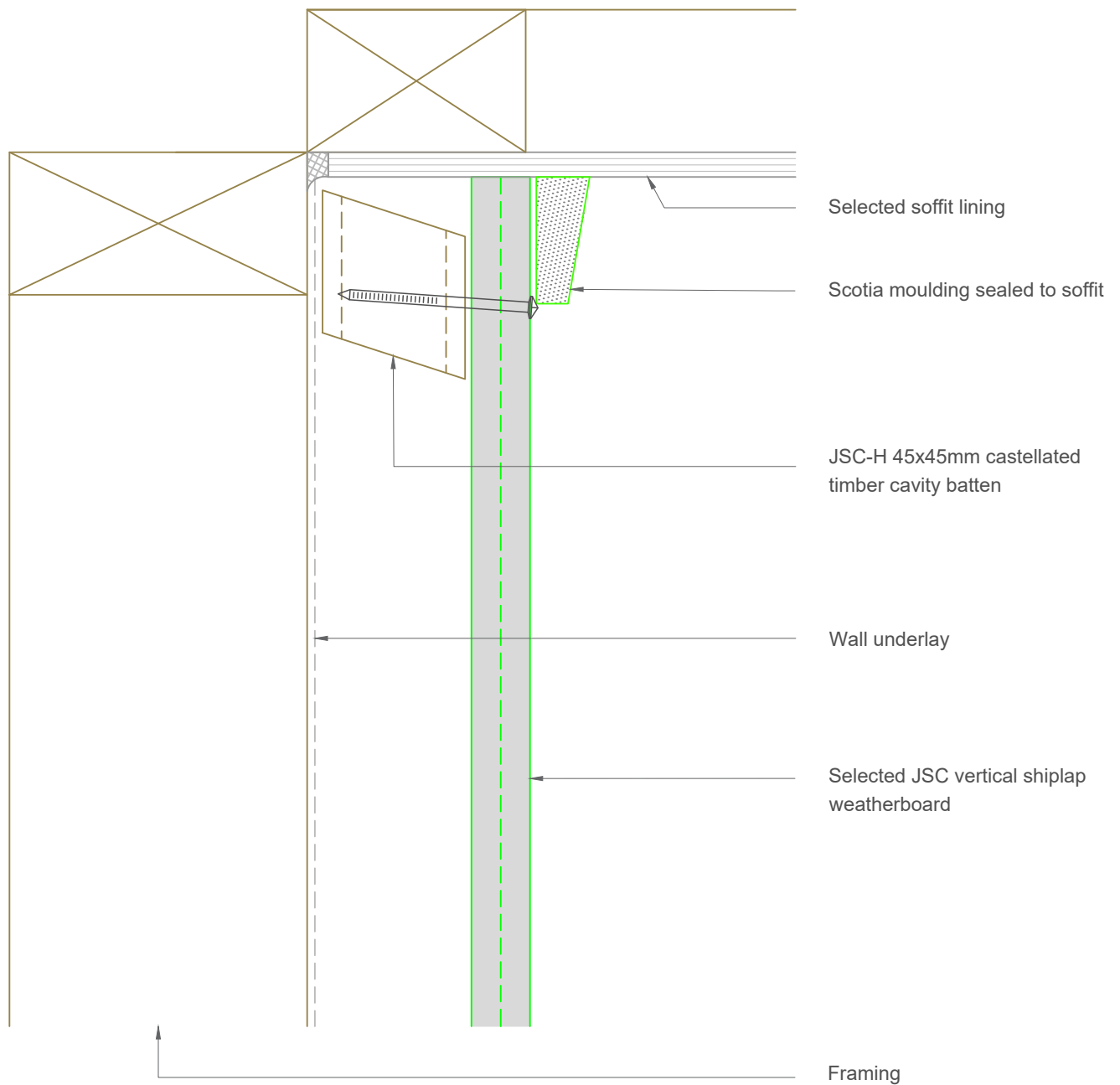
Scale: 1:2
Date: 25/08/2023

Email: TechHelp@jstimber.co.nz

Auckland
20 Sawmill Road
Riverhead
☎ 09 412 2800

Christchurch
72 Hammersmith Drive
Wigram
☎ 03 348 9726

Web: www.jstimber.co.nz



Note: To be read in conjunction with complete JSC installation instructions • Details may be subject to change without notification

Top Plate Soffit Detail

JV-F45-02

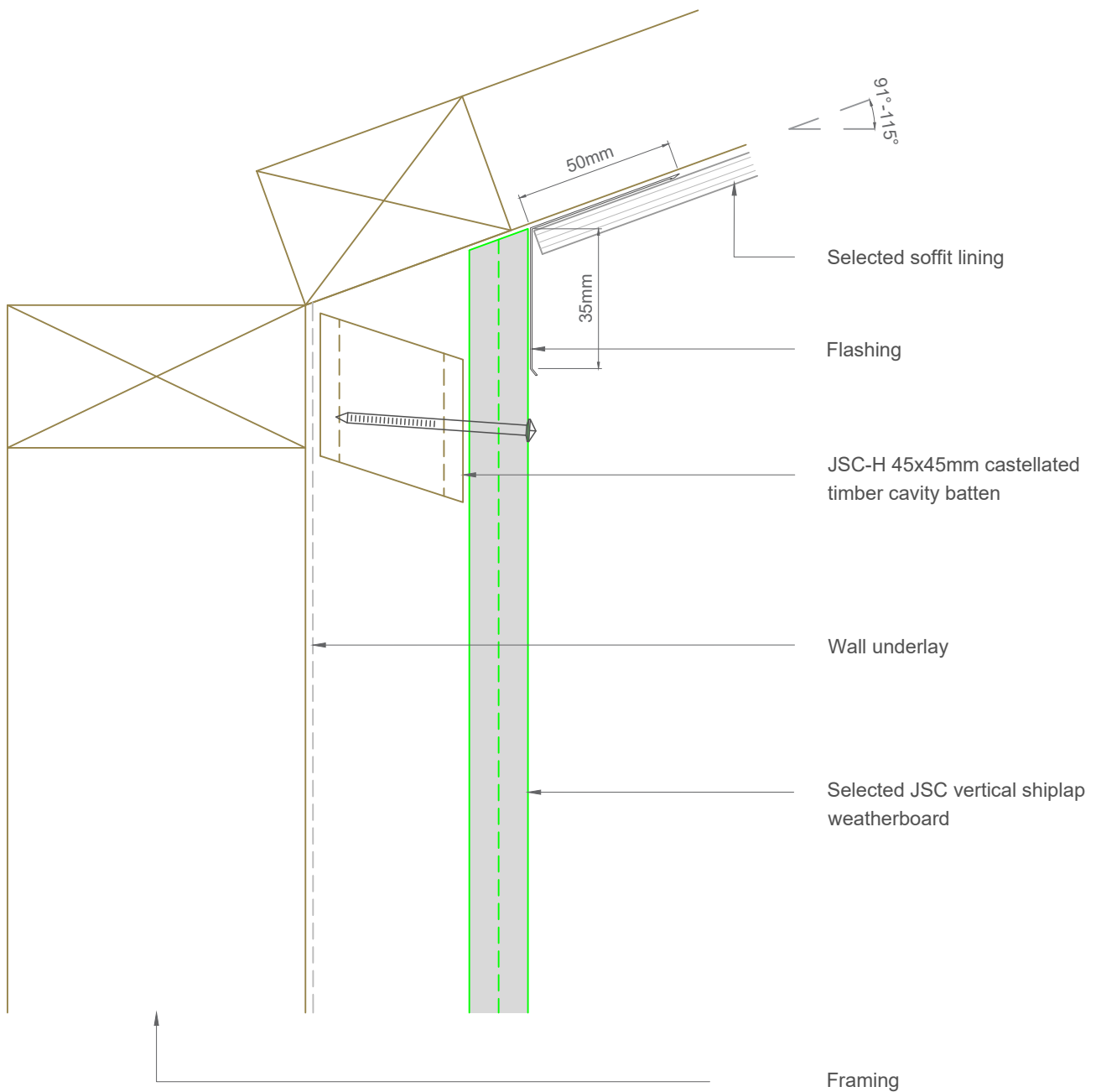
Scale: 1:2
Date: 25/08/2023

Email: TechHelp@jstimber.co.nz

Auckland
20 Sawmill Road
Riverhead
☎ 09 412 2800

Christchurch
72 Hammersmith Drive
Wigram
☎ 03 348 9726

Web: www.jstimber.co.nz



Note: To be read in conjunction with complete JSC installation instructions • Details may be subject to change without notification

Raking Soffit Detail

JV-F45-03

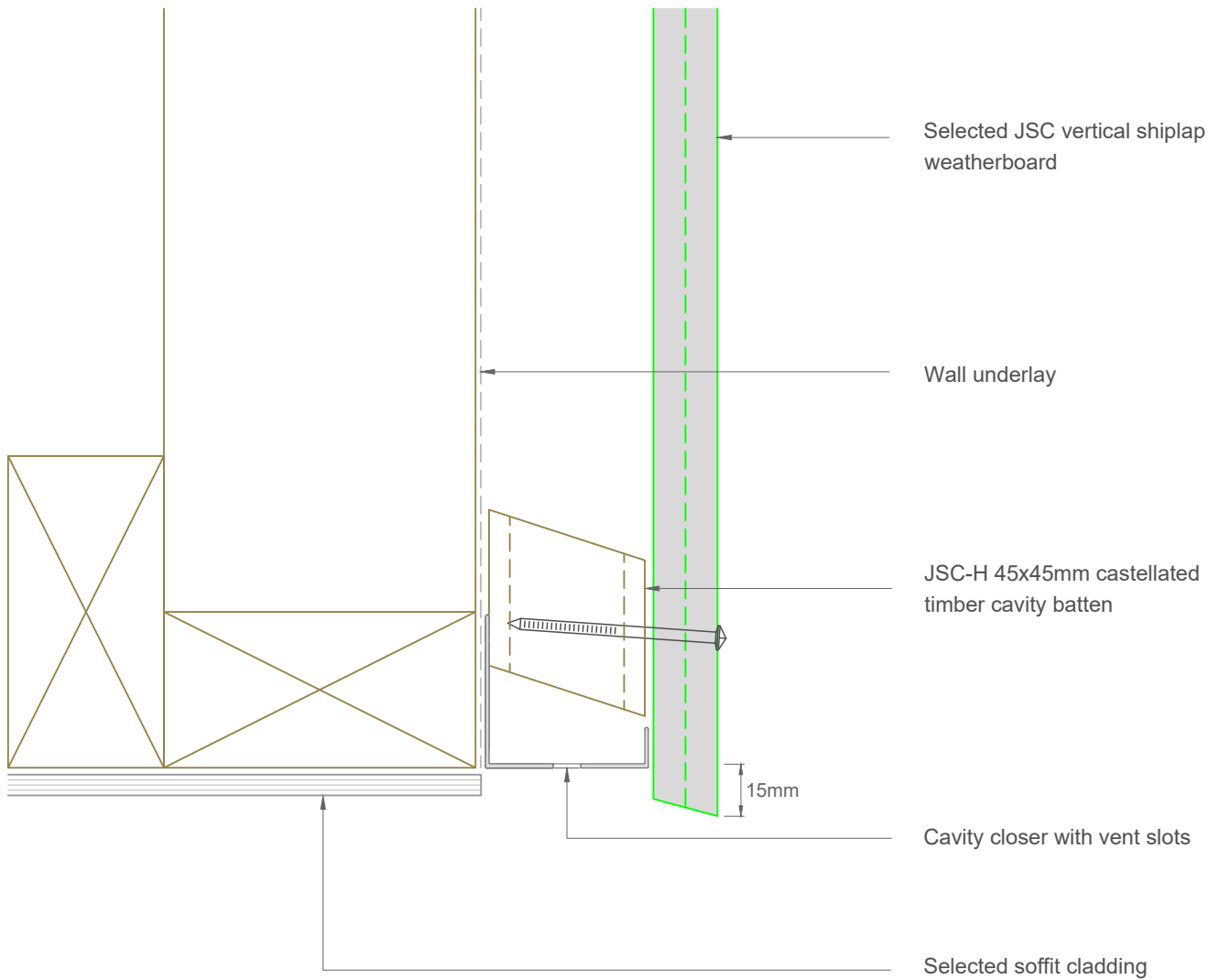
Scale: 1:2
Date: 25/08/2023

Email: TechHelp@jstimber.co.nz

Auckland
20 Sawmill Road
Riverhead
☎ 09 412 2800

Christchurch
72 Hammersmith Drive
Wigram
☎ 03 348 9726

Web: www.jstimber.co.nz



Note: To be read in conjunction with complete JSC installation instructions • Details may be subject to change without notification

Bottom Plate Soffit Detail

JV-F45-04

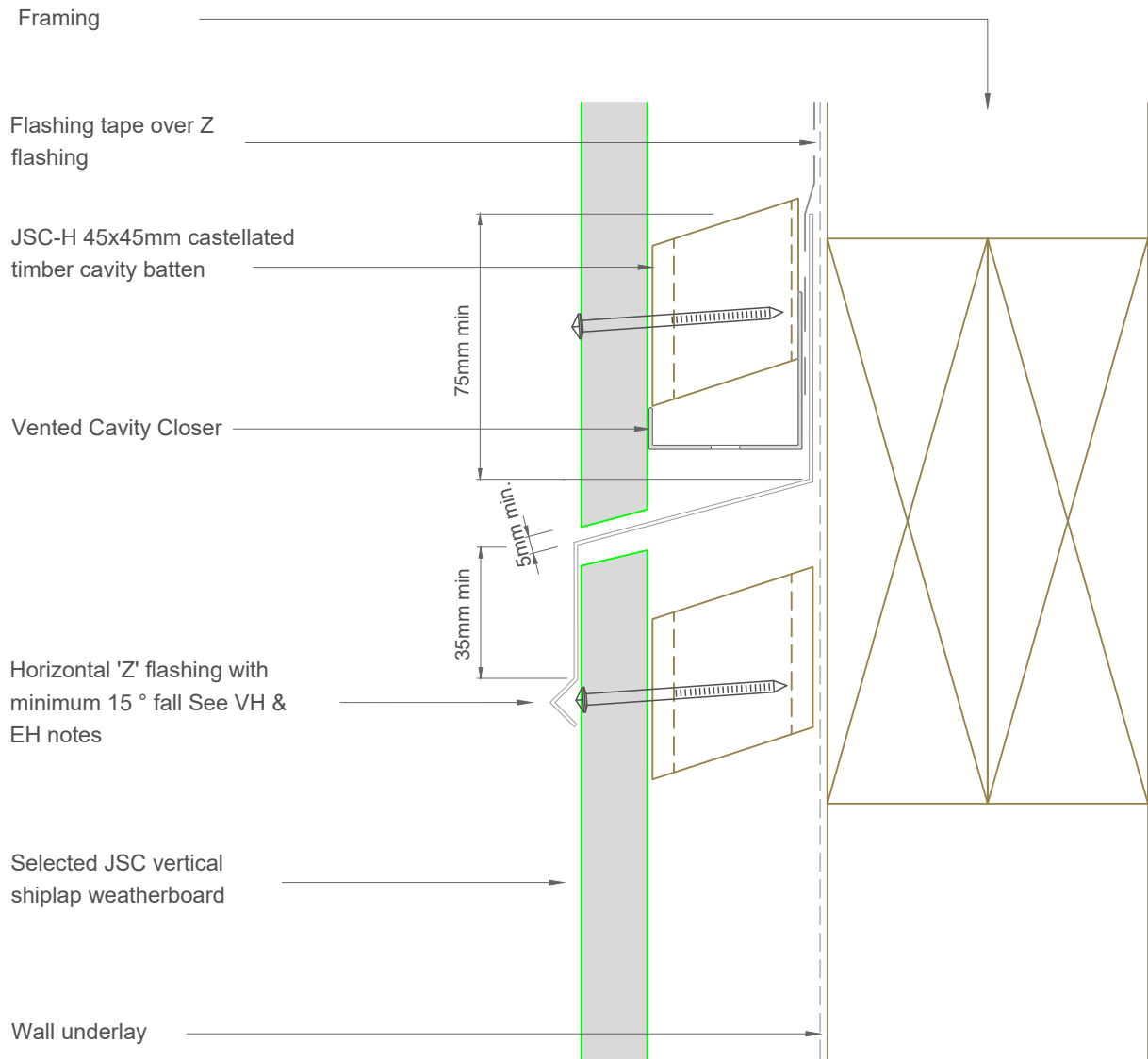
Scale: 1:2
Date: 25/08/2023

Email: TechHelp@jstimber.co.nz

Auckland
20 Sawmill Road
Riverhead
☎ 09 412 2800

Christchurch
72 Hammersmith Drive
Wigram
☎ 03 348 9726

Web: www.jstimber.co.nz



Note: To be read in conjunction with complete JSC installation instructions • Details may be subject to change without notification

Inter Storey Junction Detail

JV-F45-05

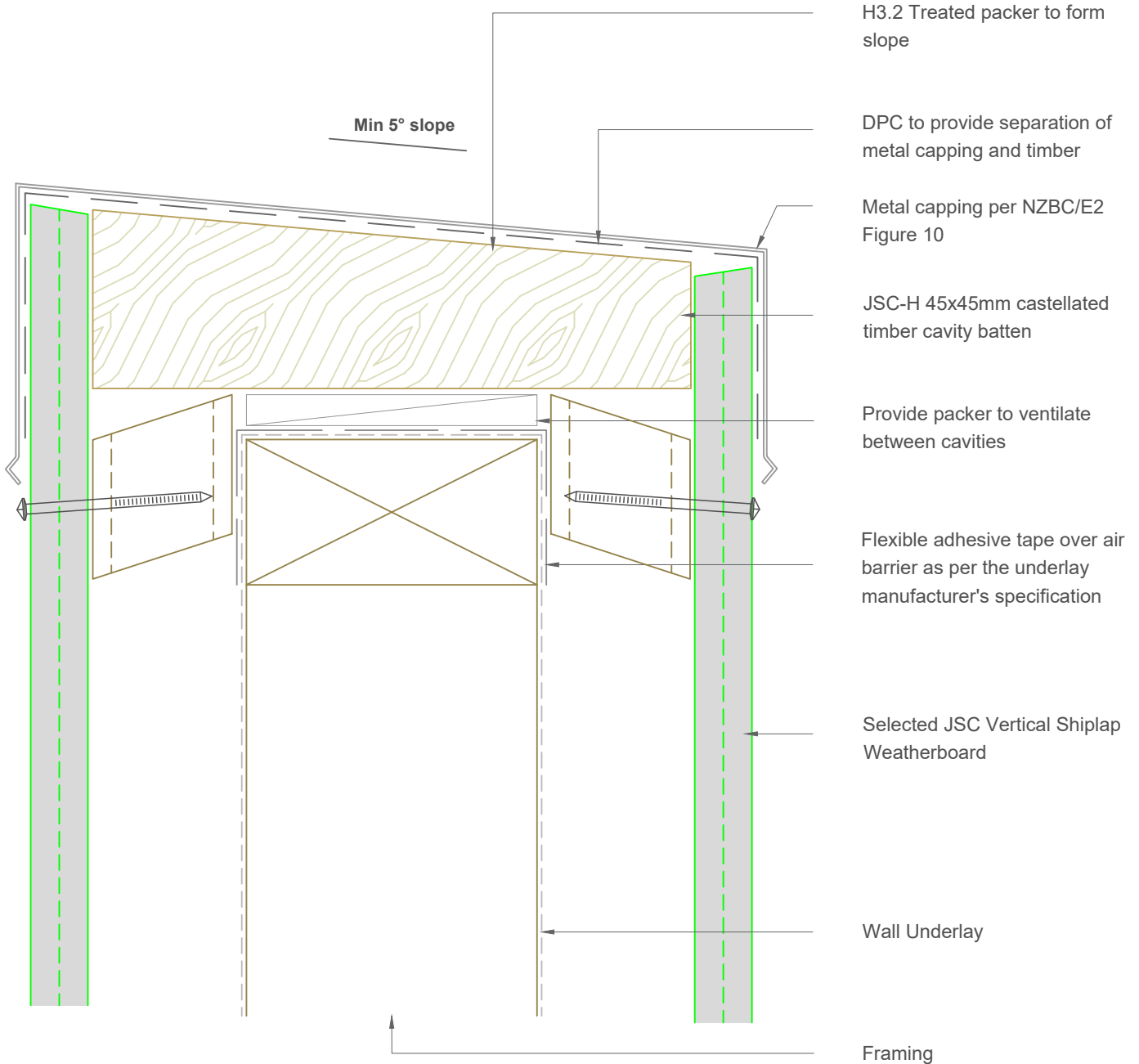
Scale: 1:2
Date: 25/08/2023

Email: TechHelp@jsttimber.co.nz

Auckland
20 Sawmill Road
Riverhead
☎ 09 412 2800

Christchurch
72 Hammersmith Drive
Wigram
☎ 03 348 9726

Web: www.jsttimber.co.nz



Note:- Parapet Design & installation should comply to NZBC/E2 Section 6

Note: To be read in conjunction with complete JSC installation instructions • Details may be subject to change without notification

Parapet Detail

JV-F45-06

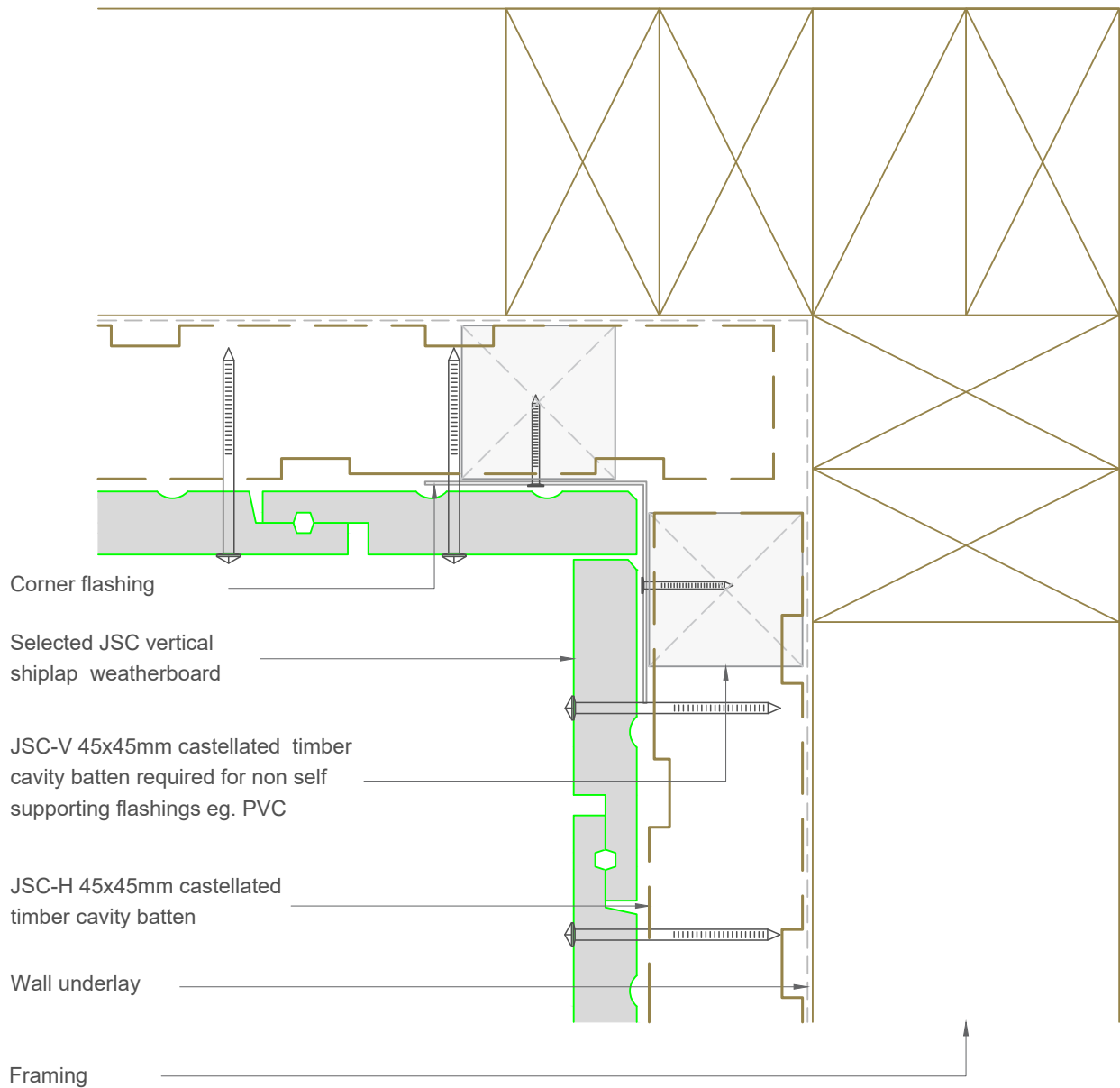
Scale: 1:2
Date: 25/08/2023

Email: TechHelp@jstimber.co.nz

Auckland
20 Sawmill Road
Riverhead
☎ 09 412 2800

Christchurch
72 Hammersmith Drive
Wigram
☎ 03 348 9726

Web: www.jstimber.co.nz



Note: To be read in conjunction with complete JSC installation instructions • Details may be subject to change without notification

Internal Corner Detail

JV-F45-10

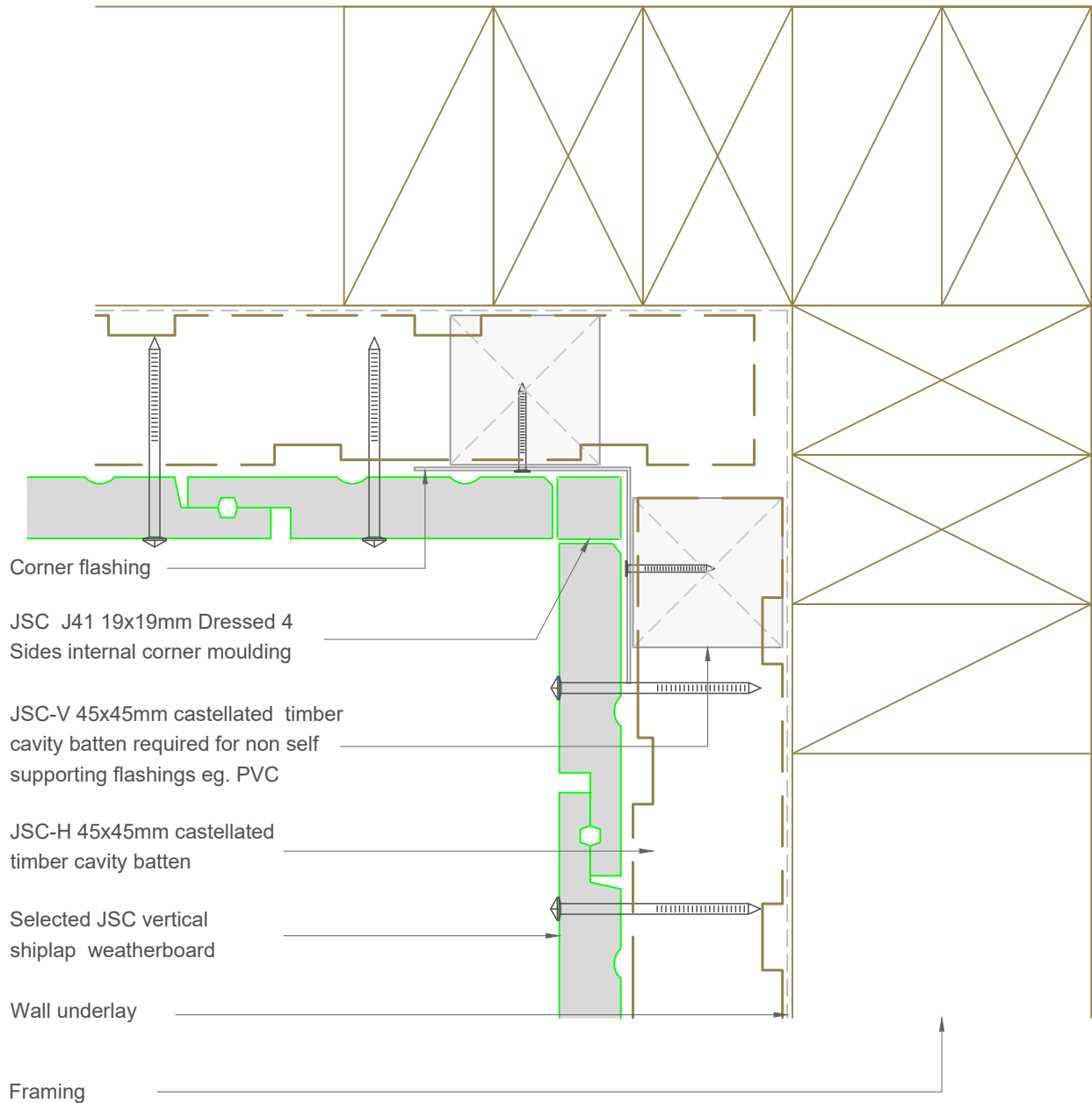
Scale: 1:2
Date: 25/08/2023

Email: TechHelp@jsttimber.co.nz

Auckland
20 Sawmill Road
Riverhead
☎ 09 412 2800

Christchurch
72 Hammersmith Drive
Wigram
☎ 03 348 9726

Web: www.jsttimber.co.nz



Note: To be read in conjunction with complete JSC installation instructions • Details may be subject to change without notification

Internal Corner Detail

JV-F45-11

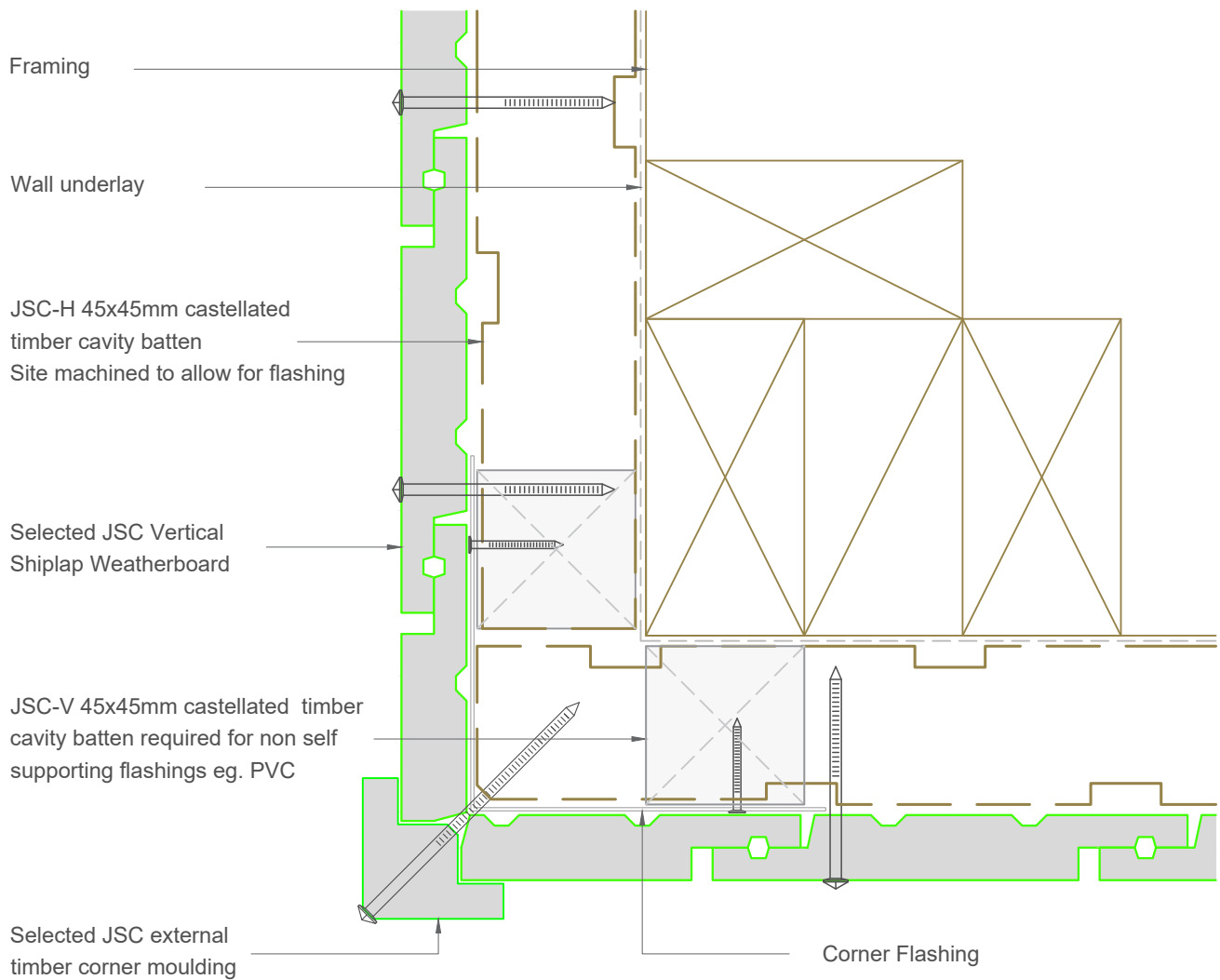
Scale: 1:2
Date: 25/08/2023

Email: TechHelp@jsctimber.co.nz

Auckland
20 Sawmill Road
Riverhead
☎ 09 412 2800

Christchurch
72 Hammersmith Drive
Wigram
☎ 03 348 9726

Web: www.jsctimber.co.nz



Note: To be read in conjunction with complete JSC installation instructions • Details may be subject to change without notification

External Corner Detail

JV-F45-13

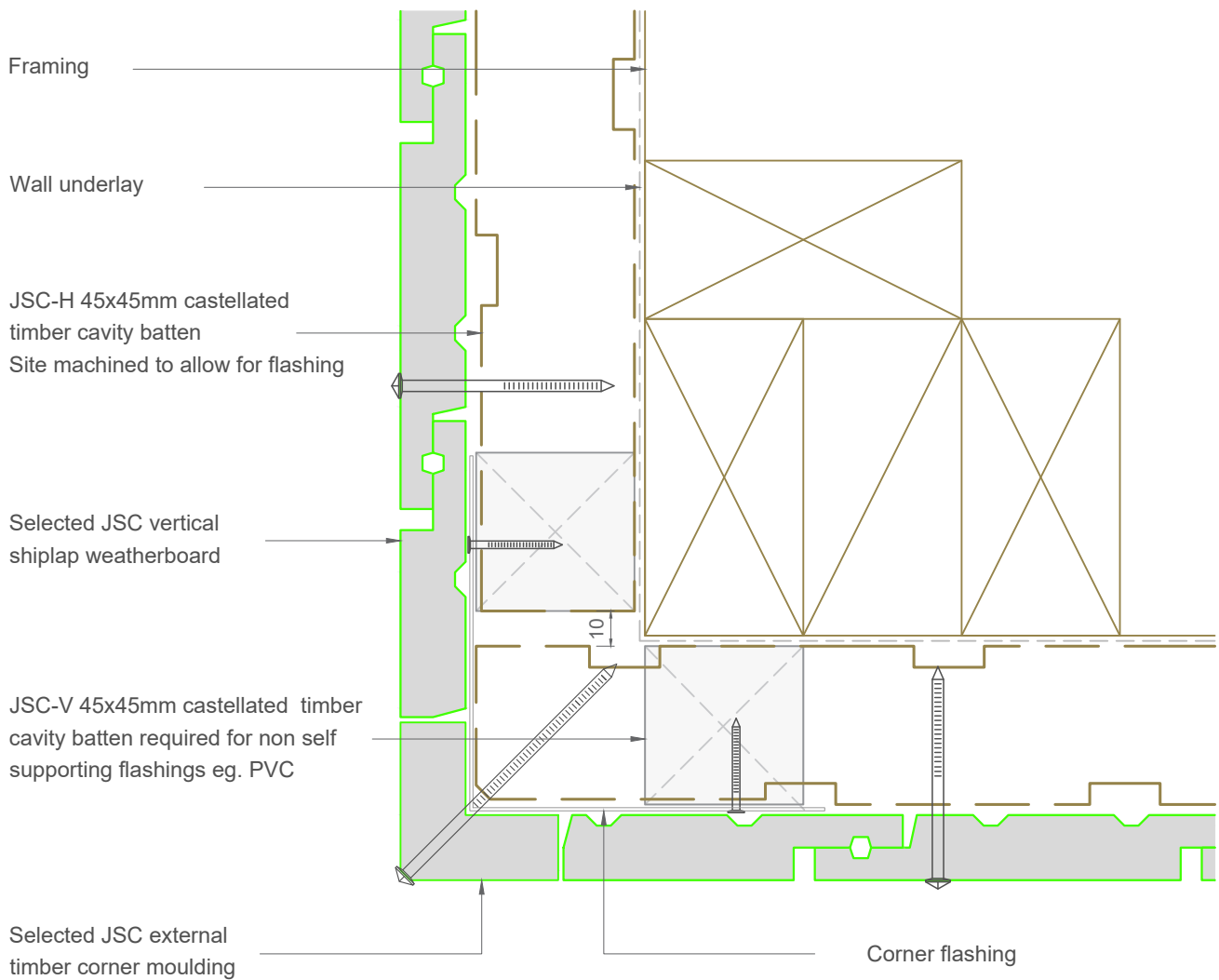
Scale: 1:2
Date: 25/08/2023

Email: TechHelp@jsttimber.co.nz

Auckland
20 Sawmill Road
Riverhead
☎ 09 412 2800

Christchurch
72 Hammersmith Drive
Wigram
☎ 03 348 9726

Web: www.jsttimber.co.nz



Note: To be read in conjunction with complete JSC installation instructions • Details may be subject to change without notification

External Corner Detail

JV-F45-14

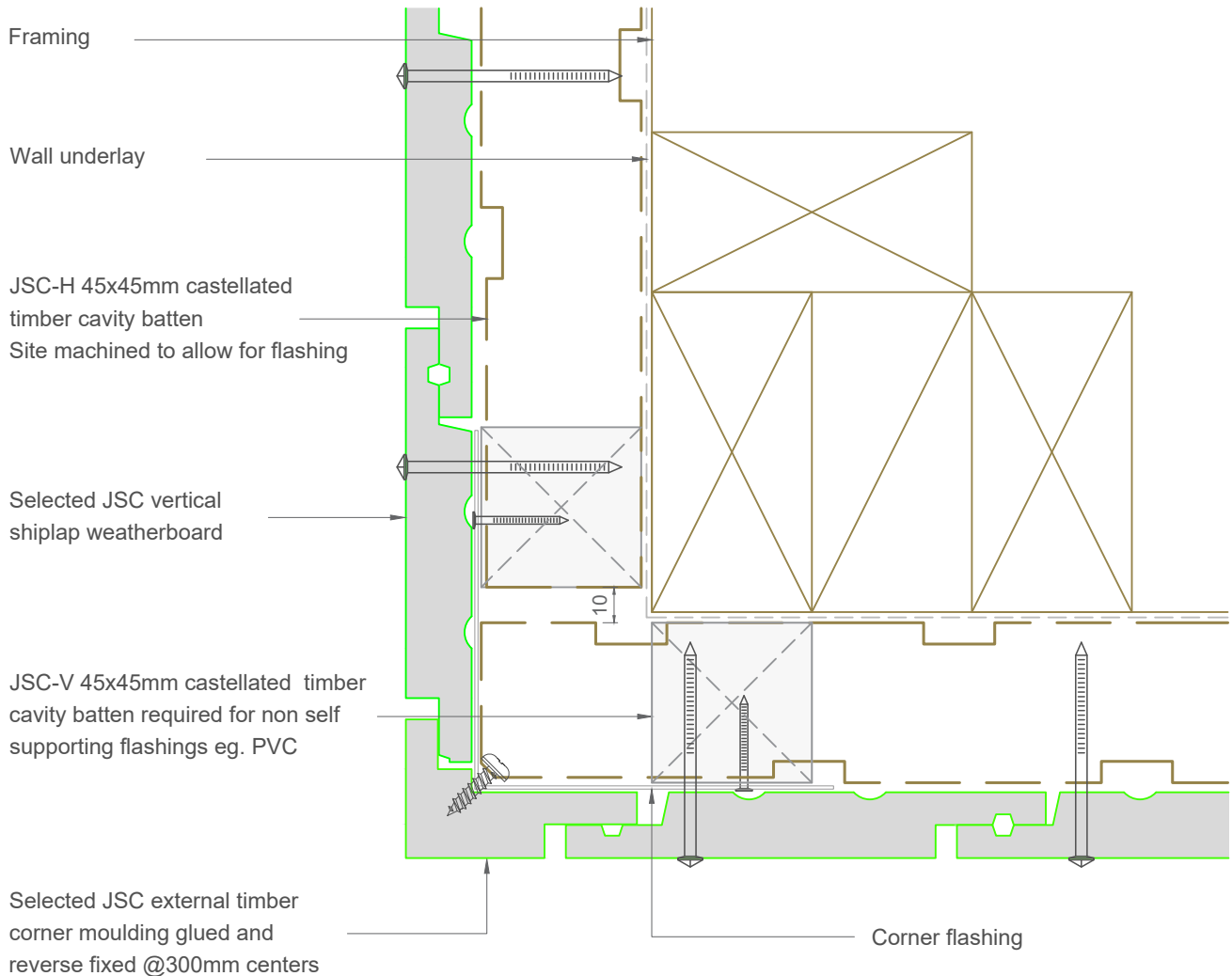
Scale: 1:2
Date: 25/08/2023

Email: TechHelp@jsctimber.co.nz

Auckland
20 Sawmill Road
Riverhead
☎ 09 412 2800

Christchurch
72 Hammersmith Drive
Wigram
☎ 03 348 9726

Web: www.jsctimber.co.nz



Note: To be read in conjunction with complete JSC installation instructions • Details may be subject to change without notification

External Corner Detail

JV-F45-16

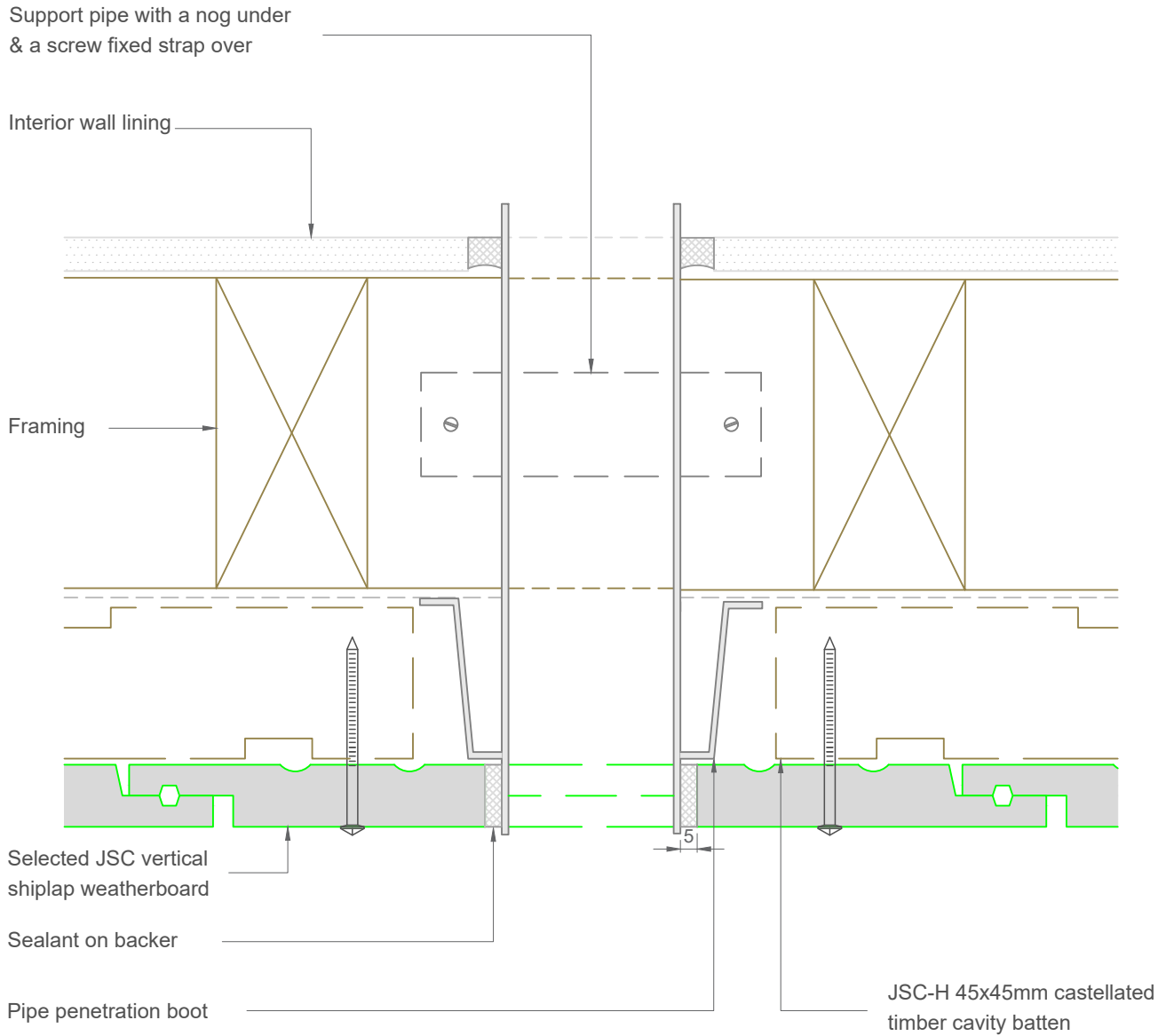
Scale: 1:2
Date: 25/08/2023

Email: TechHelp@jstimber.co.nz

Auckland
20 Sawmill Road
Riverhead
☎ 09 412 2800

Christchurch
72 Hammersmith Drive
Wigram
☎ 03 348 9726

Web: www.jstimber.co.nz



Note: To be read in conjunction with complete JSC installation instructions • Details may be subject to change without notification

Pipe Penetration Detail

JV-F45-21

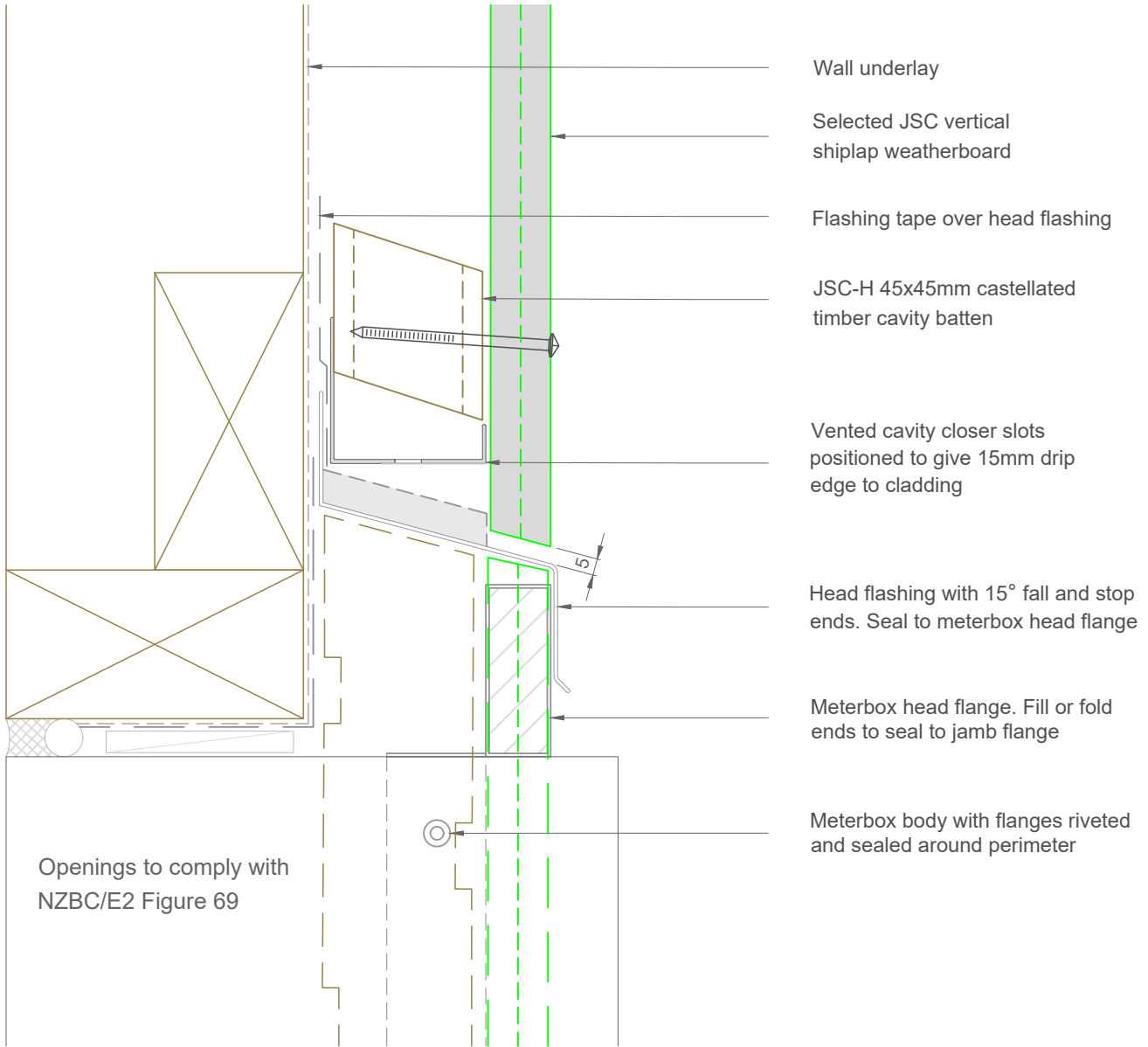
Scale: 1:2
Date: 25/08/2023

Email: TechHelp@jstimber.co.nz

Auckland
20 Sawmill Road
Riverhead
☎ 09 412 2800

Christchurch
72 Hammersmith Drive
Wigram
☎ 03 348 9726

Web: www.jstimber.co.nz



Note: To be read in conjunction with complete JSC installation instructions • Details may be subject to change without notification

Meterbox Head Detail

JV-F45-25

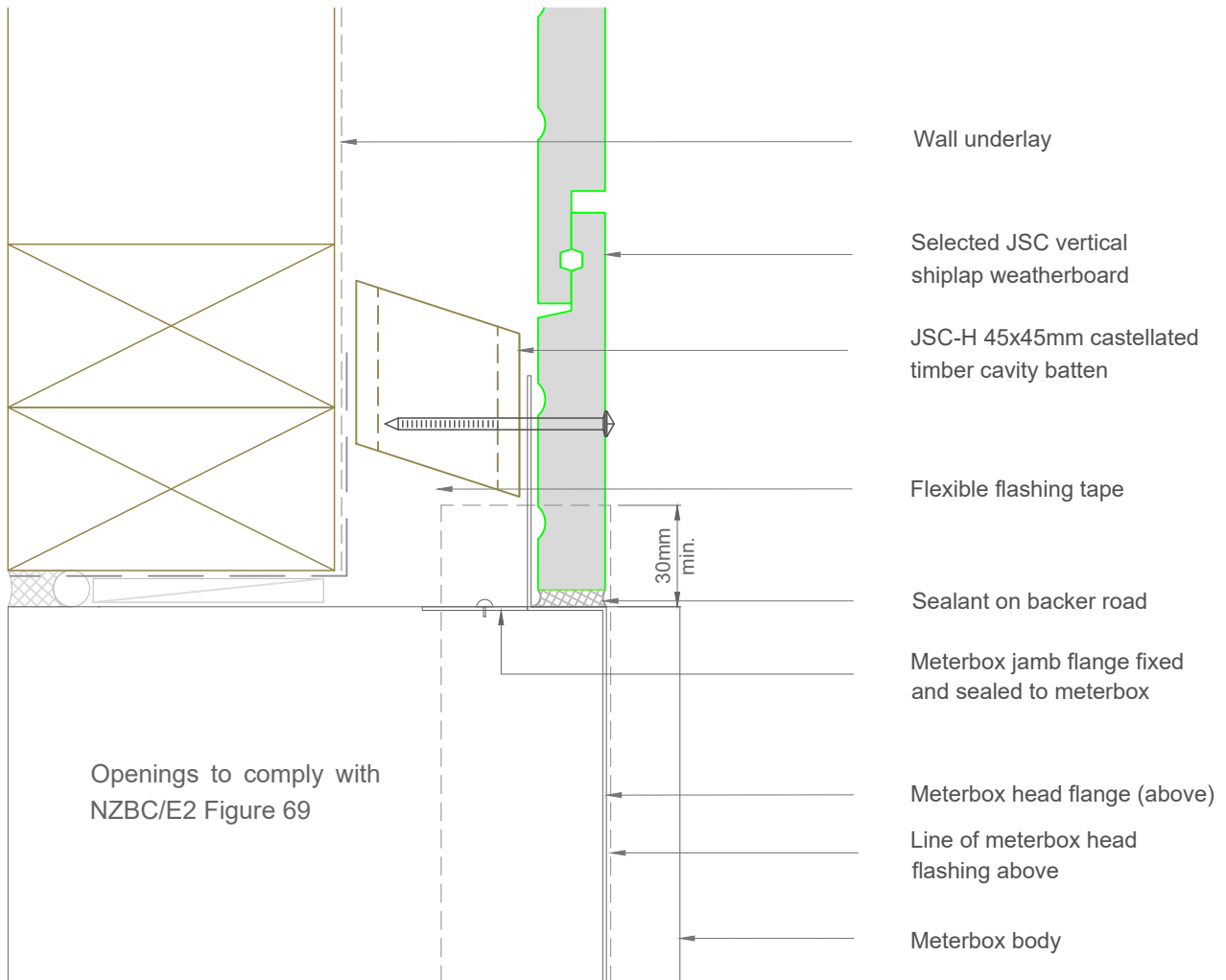
Scale: 1:2
Date: 25/08/2023

Email: TechHelp@jstimber.co.nz

Auckland
20 Sawmill Road
Riverhead
☎ 09 412 2800

Christchurch
72 Hammersmith Drive
Wigram
☎ 03 348 9726

Web: www.jstimber.co.nz



Note: To be read in conjunction with complete JSC installation instructions • Details may be subject to change without notification

Meterbox Jamb Detail

JV-F45-26

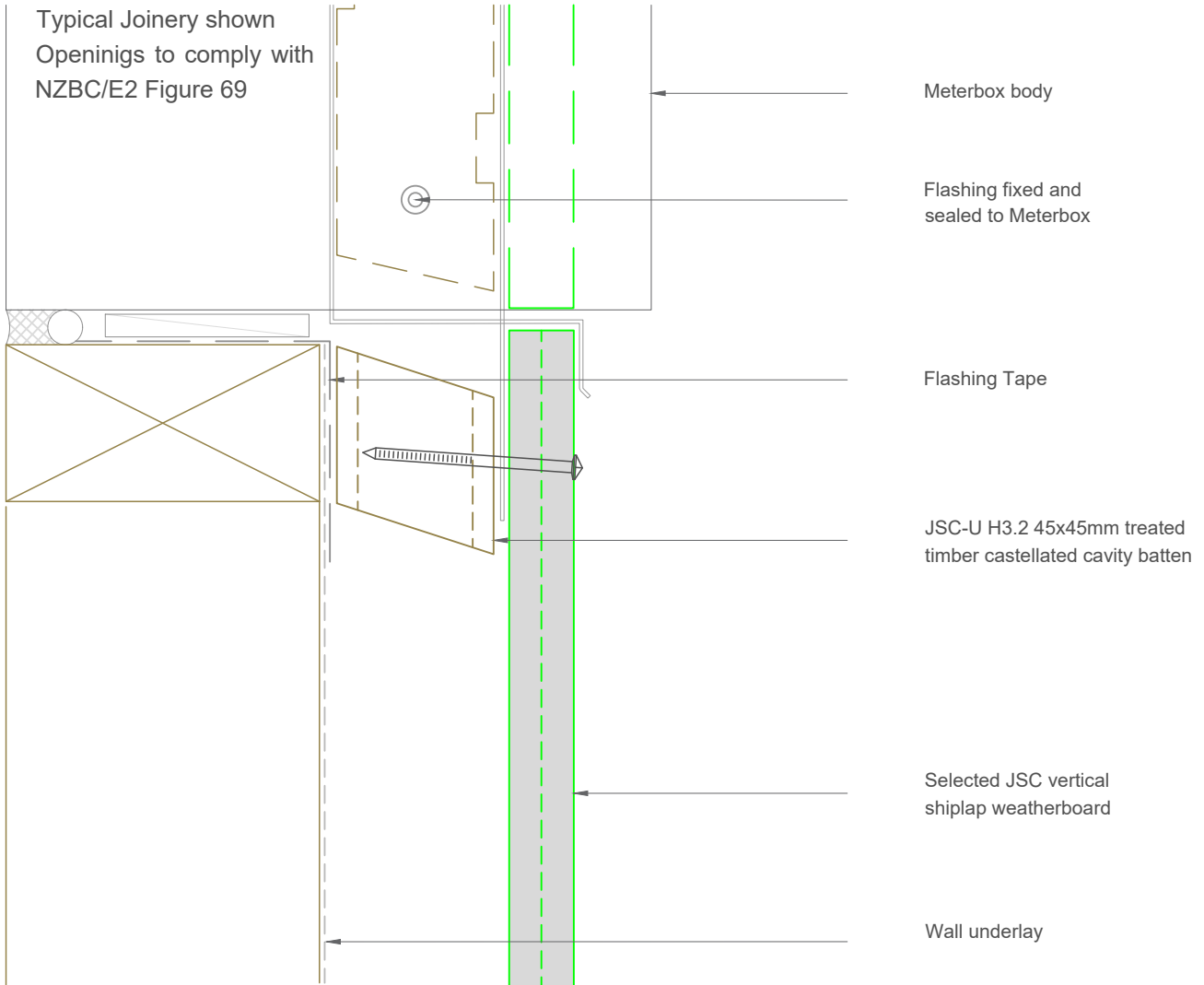
Scale: 1:2
Date: 25/08/2023

Email: TechHelp@jstimber.co.nz

Auckland
20 Sawmill Road
Riverhead
☎ 09 412 2800

Christchurch
72 Hammersmith Drive
Wigram
☎ 03 348 9726

Web: www.jstimber.co.nz



Note: To be read in conjunction with complete JSC installation instructions • Details may be subject to change without notification

Meterbox Sill Detail

JV-F45-27

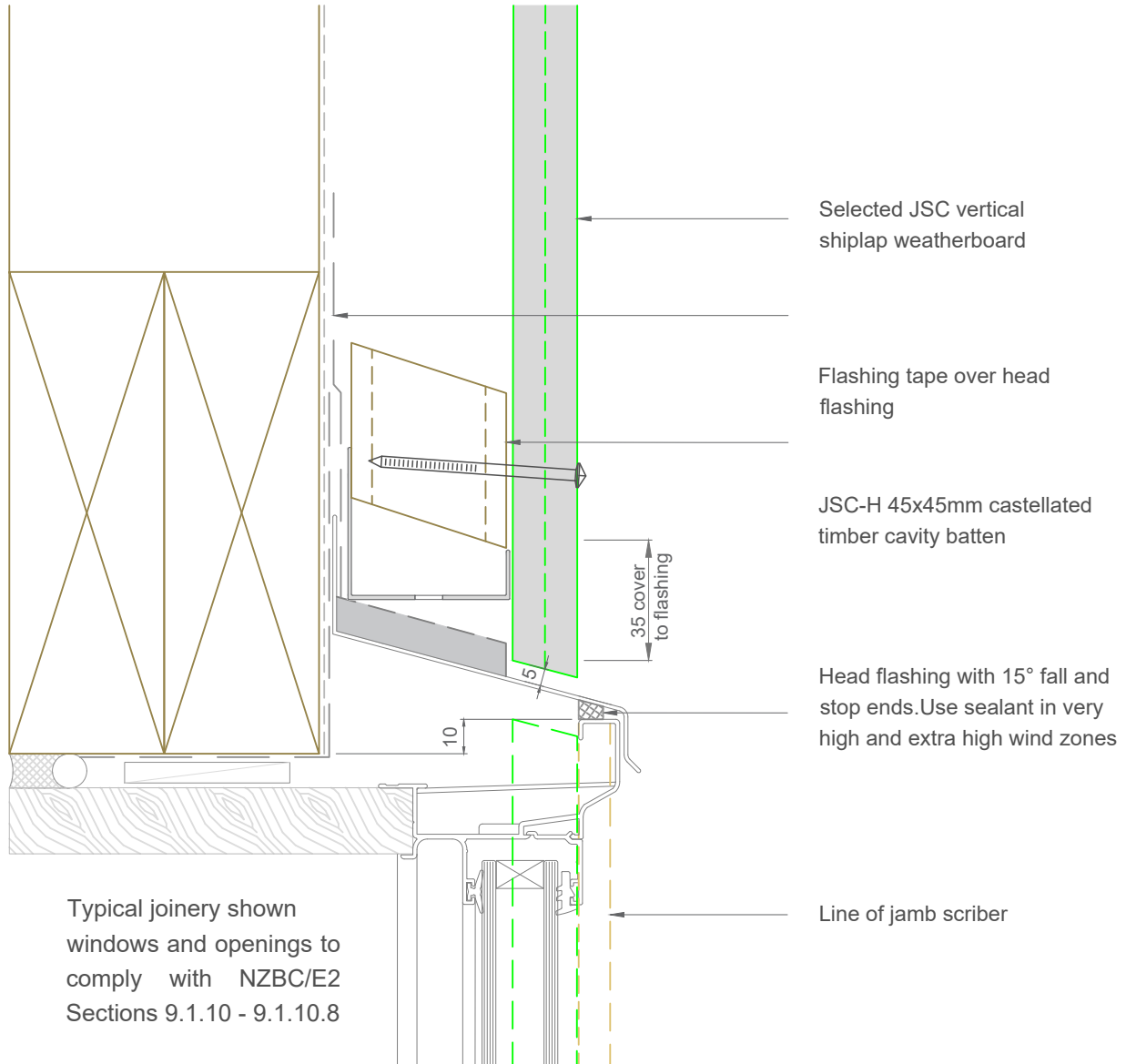
Scale: 1:2
Date: 25/08/2023

Email: TechHelp@jstimber.co.nz

Auckland
20 Sawmill Road
Riverhead
☎ 09 412 2800

Christchurch
72 Hammersmith Drive
Wigram
☎ 03 348 9726

Web: www.jstimber.co.nz



Note: To be read in conjunction with complete JSC installation instructions • Details may be subject to change without notification

Window Head Detail

JV-F45-30

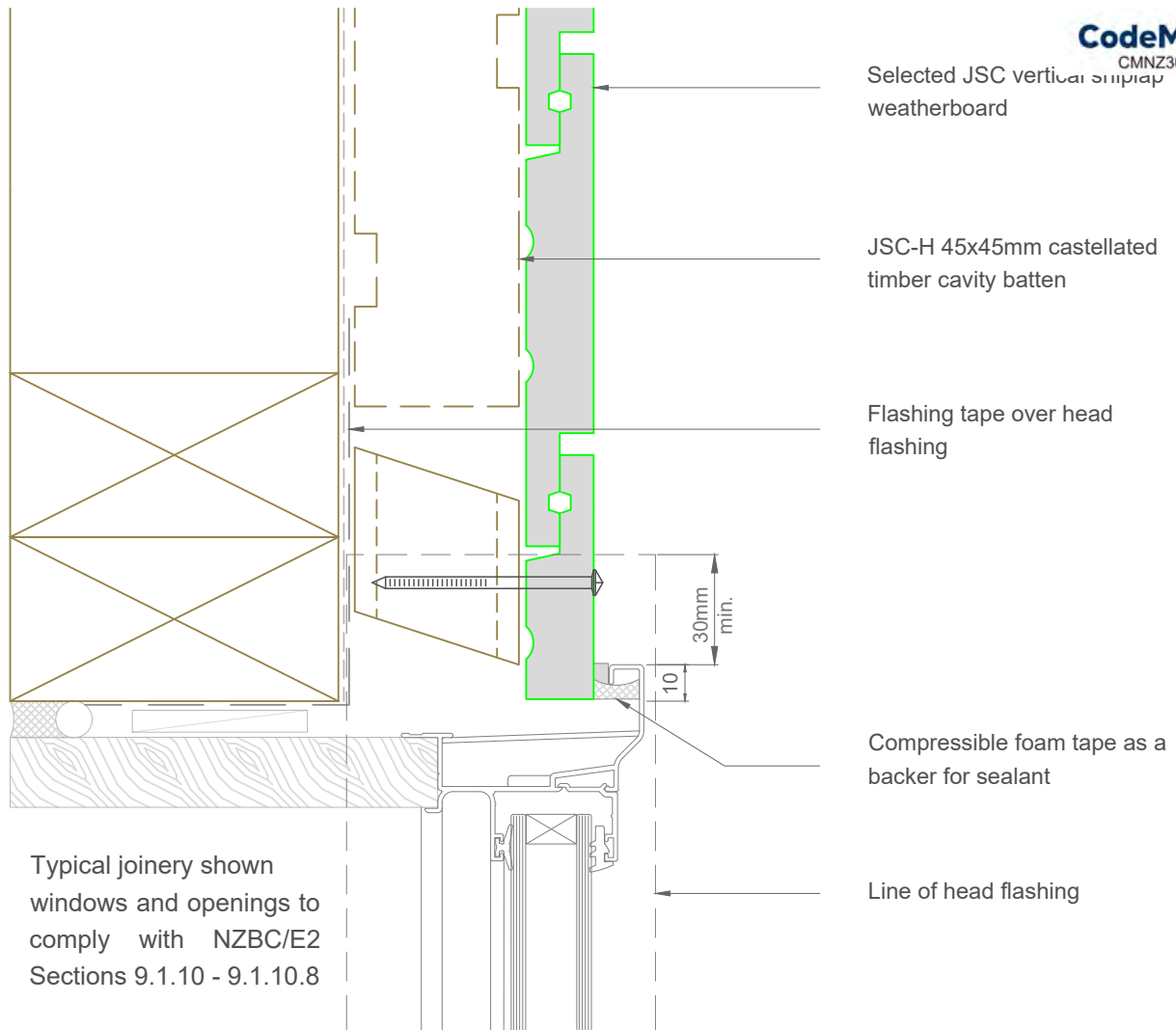
Scale: 1:2
Date: 25/08/2023

Email: TechHelp@jsttimber.co.nz

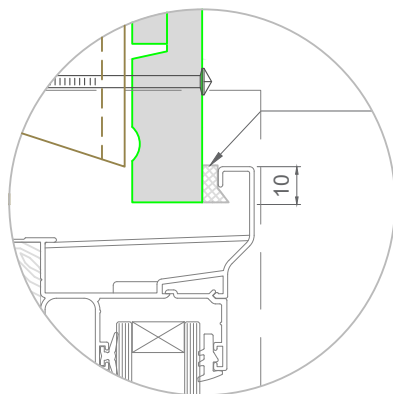
Auckland
20 Sawmill Road
Riverhead
☎ 09 412 2800

Christchurch
72 Hammersmith Drive
Wigram
☎ 03 348 9726

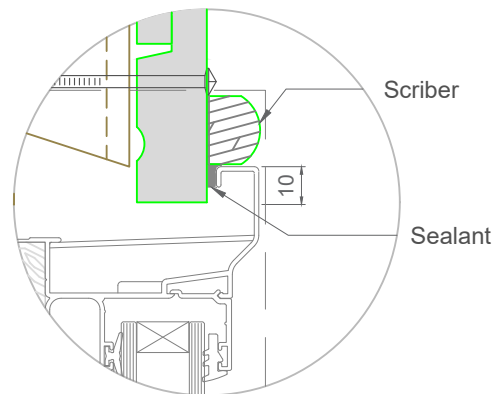
Web: www.jsttimber.co.nz



Optional



NB: Foam tape to be durable and compatible with weatherboard coating



NB: Scriber sealed to weatherboard using bead of compatible sealant

Note: To be read in conjunction with complete JSC installation instructions • Details may be subject to change without notification

Window Jamb Detail

JV-F45-31

Scale: 1:2
Date: 25/08/2023

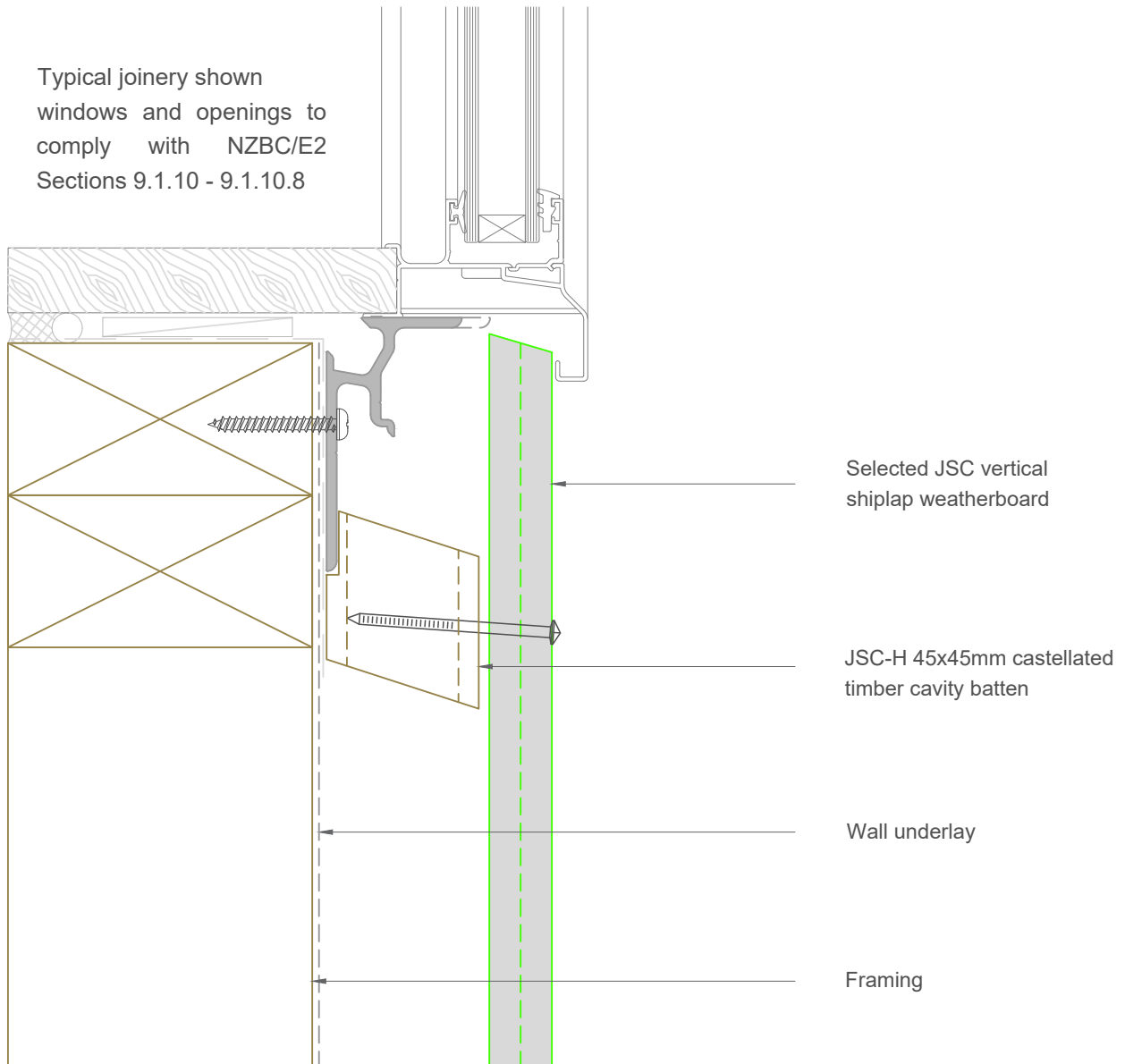
Email: TechHelp@jstimber.co.nz

Auckland
20 Sawmill Road
Riverhead
☎ 09 412 2800

Christchurch
72 Hammersmith Drive
Wigram
☎ 03 348 9726

Web: www.jstimber.co.nz

Typical joinery shown
windows and openings to
comply with NZBC/E2
Sections 9.1.10 - 9.1.10.8



Selected JSC vertical
shiplap weatherboard

JSC-H 45x45mm castellated
timber cavity batten

Wall underlay

Framing

Note: To be read in conjunction with complete JSC installation instructions • Details may be subject to change without notification

Window Sill Detail

JV-F45-33

Scale: 1:2
Date: 25/08/2023

Email: TechHelp@jstimber.co.nz

Auckland
20 Sawmill Road
Riverhead
☎ 09 412 2800

Christchurch
72 Hammersmith Drive
Wigram
☎ 03 348 9726

Web: www.jstimber.co.nz