

**JSC**Timber

# Project Timber.

MAY 2020

TAURANGA CROSSING



# The Project.

## TAURANGA CROSSING

Located at Tauriko in Tauranga city's western growth corridor, Tauranga Crossing is the newest regional shopping centre of over 35,000m<sup>2</sup> designed by Warren and Mahoney architects, featuring Western Hemlock battens in the interior of the shopping complex, and EverGreen in the exterior fencing.

Photography: Sam Hartnett

# Interior.



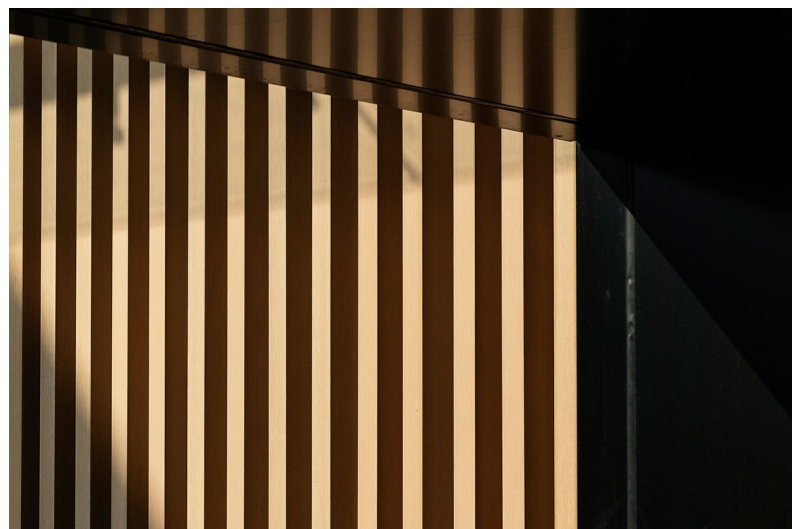
## JSC WESTERN HEMLOCK BATTENS

Western Hemlock was selected for the Tauranga Crossing interior for its availability in long lengths, near-uniform pale straw colour, and stability in service due to vertical grain structure. The cost saving over Western Red Cedar also offers advantages in large scale commercial projects. This product has a Zone penetrating fire retardant, giving it a 1s fire rating.











# Exterior.



## JSC EVERGREEN

A premium Radiata Pine Clears product, EverGreen is a local solution that is classified FSC Mix and not finger-jointed. It is also treated with MicroPro, an environmentally-friendly H3.2 product, which is compatible with other building materials. EverGreen is cost effective and available in many 20mm thick weatherboard profiles for added stability and visual depth.

# JSC Timber.

## Leading the market with world-class products & sustainable practices.

Since 1900, JSC Timber has been a leading manufacturer and supplier of quality hardwood and exotic softwood timber products.

Our modern factory and highly-skilled staff allow us to create products and custom profiles in-house for added benefit and flexibility.

We pride ourselves on our relationships with our suppliers, and take care of our supply chain to ensure we purchase from reputable companies with a similar outlook for the future.

[jsctimber.co.nz](http://jsctimber.co.nz)



@jsctimber

## AUCKLAND

09 412 2800  
22 Sawmill Road  
Riverhead

## CHRISTCHURCH

03 348 9726  
72 Hammersmith Drive  
Sockburn

## HAMILTON

027 480 6280  
3/39 McKee Street  
Te Rapa