

**JSC**Timber

# Project Timber

---

JANUARY 2020

GOODSIDE, SMALES FARM



# The Project.

## GOODSIDE, SMALES FARM

JSC Timber worked closely with Rucon Construction's MD, Dan Russek and his team, together with Izzard Design, to create the immensely popular Goodside and The Grange at Smales Farm, in Takapuna, Auckland.

Photography: Mark Scowen

# Goodside.



## CUMARU COLUMNS & BEAMS

JSC Timber Cumaru is 100% FSC-certified. Due to its weight and density, Cumaru is primarily used in heavy construction and public space developments.

Our offshore timber mill partner milled the Cumaru to the required dimensions. This kept wastage to a minimum, and meant the budget quoted on at the outset was easily met.

The timber was then shipped to NZ roughsawn and machined to profile at JSC Timber. This synergy creates a measurably more sustainable story.

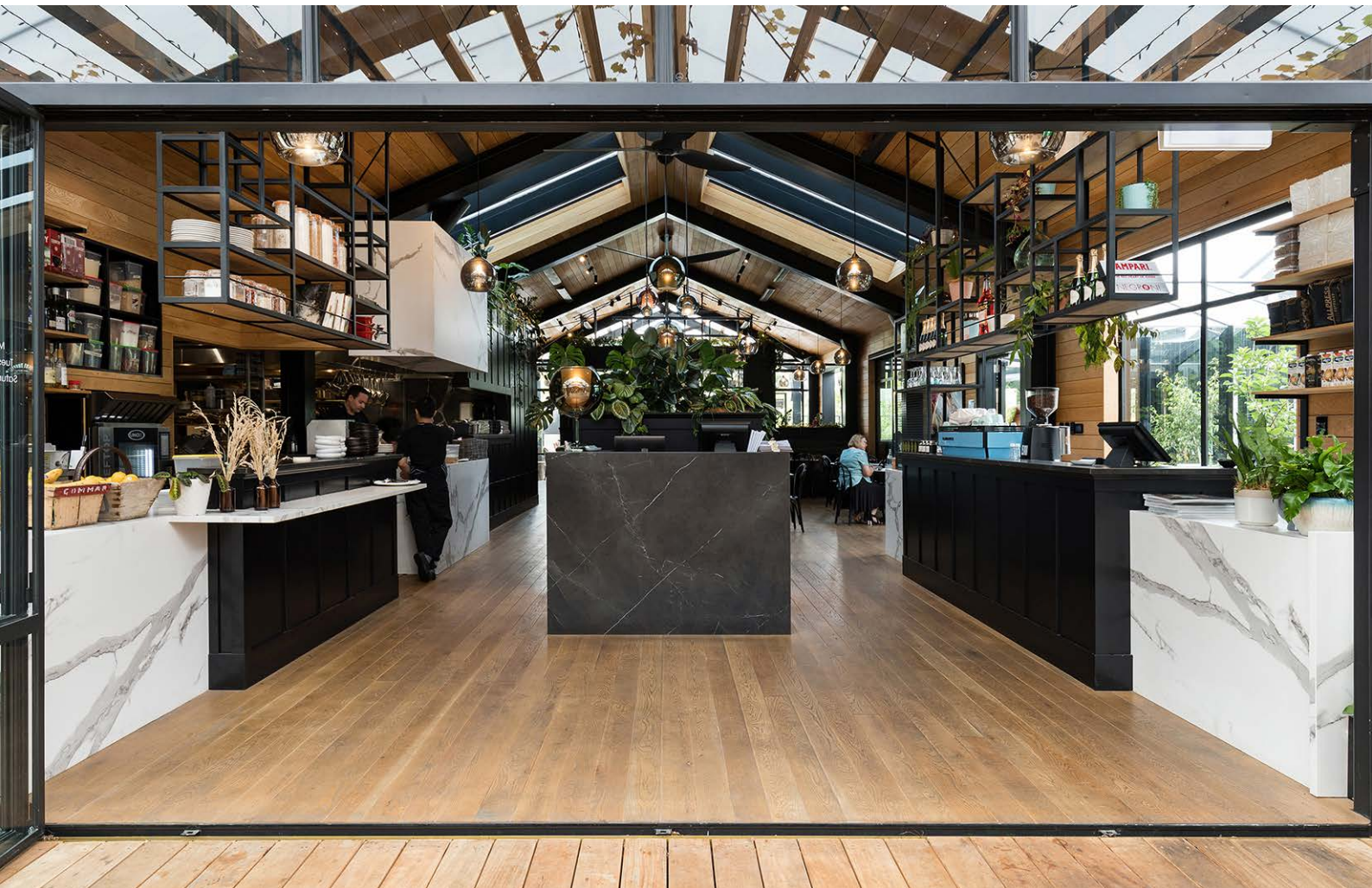


## VITEX DECKING

Vitex is strong, durable and user-friendly – this makes it ideal for Goodside, where hundreds of people walk across the decking daily.

Our Vitex supply is from small village sawmills in the Solomon Islands, operating in family/tribal concessions. For over 40 years we have sourced our product from these forest communities, and those mills that support legal village enterprise.

# The Grange.

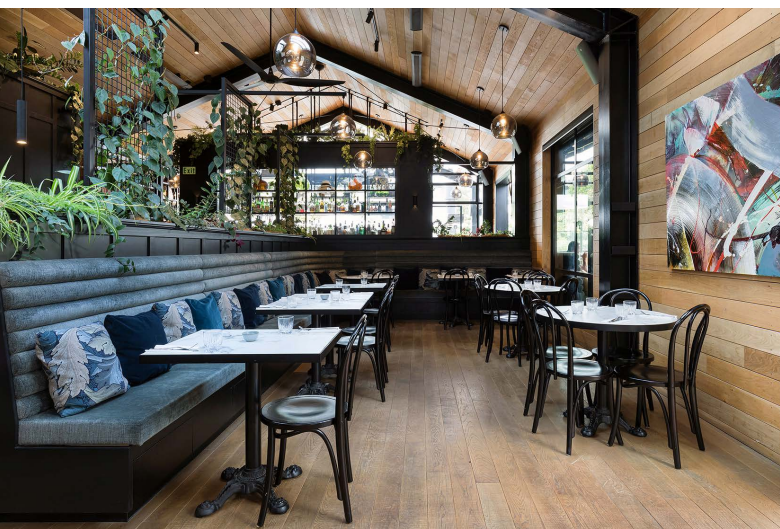


## AMERICAN WHITE OAK

JSC Timber American White Oak in FAS grade wall/ceiling panels were specified, installed with a bandsawn detail and coated with an intumescent fire-rated coating. These boards were profiled for jointing off batten, which improves buildability and prevents wastage.

The same American White Oak was used for the flooring; sanded and oiled for ease of maintenance in the future.





# JSC Timber.

## Leading the market with world-class products & sustainable practices.

Since 1900, JSC Timber has been a leading manufacturer and supplier of quality hardwood and exotic softwood timber products.

Our modern factory and highly-skilled staff allow us to create products and custom profiles in-house for added benefit and flexibility.

We pride ourselves on our relationships with our suppliers, and take care of our supply chain to ensure we purchase from reputable companies with a similar outlook for the future. JSC continues to lead environmental concerns in the industry, and FSC-certified timbers play a major part of our business ethics.

[jsctimber.co.nz](http://jsctimber.co.nz)



@jsctimber

### AUCKLAND

09 412 2800  
22 Sawmill Road  
Riverhead

### CHRISTCHURCH

03 348 9726  
72 Hammersmith Drive  
Sockburn

### HAMILTON

027 480 6280  
3/39 McKee Street  
Te Rapa